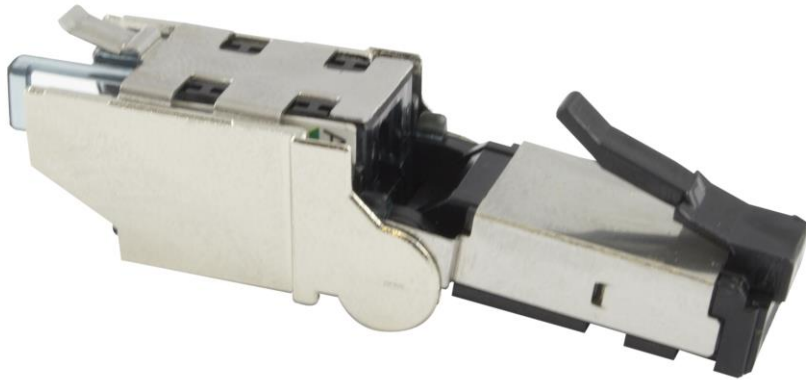


REF : PLAG6AFS

Toolless full shielded angled RJ45 "field installable" plug



45°



90°

Descriptions

The PLAG6AFS is a full shielded RJ45 plug with rotative head to allow a little bending radius in case of narrow space. This toolless plug is the best connectivity solution in case of direct attaché solution :

- Designed with a rotative head
- IDC blocks specially made for cable AWG 26 to 23 solid cores (maximum insulation : 1.27 OD)
- Technology improvements :
 - Integrated gold contact and stable contact height
 - IDC technology
 - Compensation circuit
- Low useful depth : 26mm
- 4 insertors for a quick connection and safety by a mechanical blocking
- Tool less connection
- Colour code visibility to ensure a visual monitoring during connection
- Suitable for all IP based applications on static situation (IP cams, IP access control, Wifi access point ...)

Performances

Performance

Amd1.0 ISO 11801 channel Classe Ea
EIA TIA 568-C.2 Channel Cat 6A
PoE / PoEP

REF : PLAG6AFS

Tooless full shielded angled RJ45 "field installable" plug

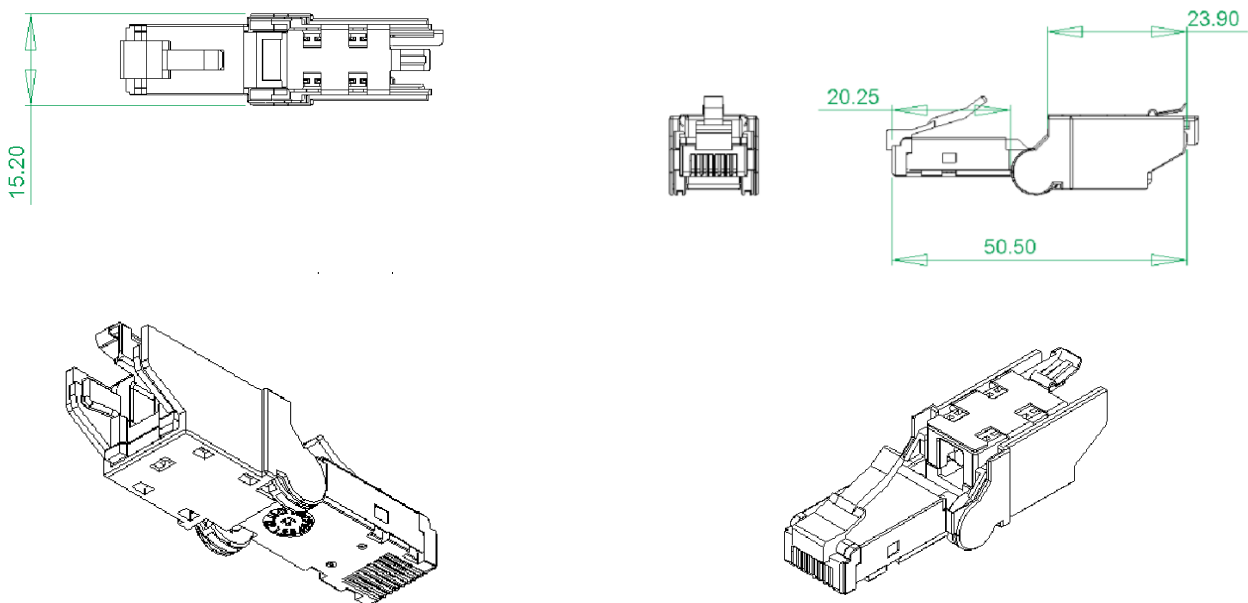
Technical properties

Connection without tool by IDC	Phosphor Bronze with nickel plating
Conductor gauge	AWG 26 to AWG 22 solid conductor with insulation max 1.27mm
Dimensions	Conforms to FCC part 68 subpart F requirements
Contacts	Gold plating in localized area over nickel undercoat
Housing	Fire retardant thermal plastic UL94-V0
Color code	568A and 568B

Technical properties

Contact resistance	≤ 20 mΩ
Input/output resistance	≤ 200 mΩ
Cycle of insertion	> 500
Cycle of head rotation	< 50
Operating voltage	≤ 72V dc

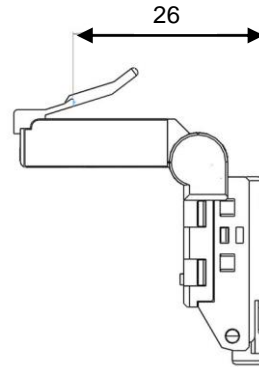
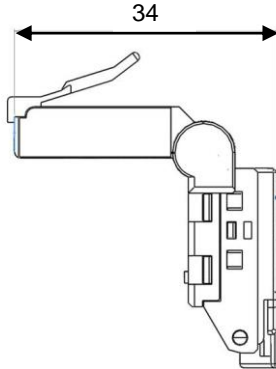
Exploded view and 3D picture



REF : PLAG6AFS

Toolless full shielded angled RJ45 "field installable" plug

Low useful depth



Ordering informations

Item No	Designation	Packaging
PLAG6AFS	Full shielded angled RJ45 plug	unit