

Data sheet

Commercial Art.No.: 96.042.4153.1

connector RST20I4S S1 ZR2 V SW

RST® CLASSIC connector, straight, number of poles 4, male, connection type screw connection, rated voltage 250 V / 400 V, rated current 20 A, cable diameter 10 - 14 mm, color of coding/ contact carrier black



Commercial Art.No.	96.042.4153.1
EAN	4015573863507
Order Unit	1

certificates / approvals



Technical data

general

rated current	20 A
rated voltage	250 V / 400 V
rated impulse voltage	4 kV
strain relief	yes
pollution degree	3
lockable	self-locking (unlocking by tool)
color of coding/ contact carrier	black
marking of poles	1, 2, 3, PE
color of housing inclusive strain relief	black
RAL-Nummer Codierung/Kontakteinsatz	9005

connection data

cable diameter max.	14 mm
cable diameter min.	10 mm
connection cross section solid mm² max.	4 mm²
connection cross section solid mm² min.	0.75 mm²
connection cross section fine stranded mm² max.	4 mm²
connection cross section fine stranded mm² min.	0.75 mm²
terminations per pole	1
connection cross section stranded mm² min.	0.75 mm²
connection cross section stranded mm² max.	4 mm²
sheath strip length	26.5 mm
wire strip length	8 mm

technical data UL

rated voltage UL	600 V
------------------	-------

rated current UL	20 A
connection cross section solid AWG min.	18 AWG
connection cross section solid AWG max.	14 AWG
connection cross section stranded AWG min.	18 AWG
connection cross section stranded AWG max.	14 AWG
degree of protection (NEMA)	4, 4X, 6, 6P

model

model	male
connection type	screw connection
degree of protection (IP)	IP66/68 (3m;2h) /IP69

material

housing material	polyamide
halogen free	yes
contact material	CuZn
fire load	0.287 kWh/St
insulation components continuous temperature	100 °C
surface finish	silver-plated

dimensions

length	78.4 mm
width	34.6 mm
height	34.6 mm

note

note	RST® terminals with screw clamping allow the connection of conductors without special preparation (without ferrules) according to EN 60999-1.
------	---

classification

ECLASS 11	
ECLASS 8.1	27440605
ETIM 9.0	EC002560
ETIM 8.0	EC002560
ETIM 7.0	EC002560
ETIM 6.0	EC002560
ETIM 5.0	EC002560
ETIM 4.0	EC002560

product compliance

ROHS conformity status	compliant/exempted
ROHS exceptions	III-6(c)
REACH-SVHC conformity status	Duty-To-Declare
REACH-SVHC substances	Lead
REACH-SVHC CAS numbers	7439-92-1

Accessories

Commercial Art.No.:	Article-type description:	Description:
------------------------	---------------------------	--------------

05.565.9953.1	cover for male connector SW	RST20i5/4 cover piece, for covering unused male connectors, color black
99.532.0000.7	cover for male connector SW	RST20i5/4 cover piece, for covering unused male connectors, with fastening belt, color black

Fits with

Commercial Art.No.:	Article-type description:	Description:
96.041.4153.1	connector RST20I4S B1 ZR2 SW	RST® CLASSIC connector, straight, number of poles 4, female, connection type screw connection, rated voltage 250 V / 400 V, rated current 20 A, cable diameter 10 - 14 mm, color of coding/ contact carrier black
96.043.4153.1	connector RST20I4S B1 YR2 SW	RST® CLASSIC connector, angled 90°, number of poles 4, female, connection type screw connection, rated voltage 250 V / 400 V, rated current 20 A, cable diameter 10 - 14 mm, color of coding/ contact carrier black
96.041.5053.1	device connector RST20I4S B1 M01 SW	RST® CLASSIC device connector, standard, straight, M25, number of poles 4, model female, connection type screw connection, rated voltage 250 V / 400 V, rated current 20 A, color of coding/ contact carrier black
96.041.6153.1	device connector RST20I4S B1 M03 SW	RST® CLASSIC device connector, modular, straight, M16, number of poles 4, model female, connection type screw connection, rated voltage 250 V / 400 V, rated current 20 A, color of coding/ contact carrier black
96.041.6053.1	device connector RST20I4S B1 M00 SW	RST® CLASSIC device connector, modular, straight, M20, number of poles 4, model female, connection type screw connection, rated voltage 250 V / 400 V, rated current 20 A, color of coding/ contact carrier black
96.043.6053.1	device connector RST20I4S B1 M90 SW	RST® CLASSIC device connector, modular, angled 90°, M20, number of poles 4, model female, connection type screw connection, rated voltage 250 V / 400 V, rated current 20 A, color of coding/ contact carrier black
96.043.6253.1	device connector RST20I4S B1 M91 SW	RST® CLASSIC device connector, modular, angled 90°, M25, number of poles 4, model female, connection type screw connection, rated voltage 250 V / 400 V, rated current 20 A, color of coding/ contact carrier black
96.045.6153.1	device connector RST20I4S B1 M13 SW	RST® CLASSIC device connector, modular, angled 7°, M16, number of poles 4, model female, connection type screw connection, rated voltage 250 V / 400 V, rated current 20 A, color of coding/ contact carrier black

These dimensions will be especially checked at delivery
Only inspection dimensions
With /E marked dimensions are only valid for internal use

Diese Maße werden bei Abnahme besonders geprüft
Ausschließlich Prüfmaße
Mit /E gekennzeichnete Maße sind nur für interne Zwecke gültig

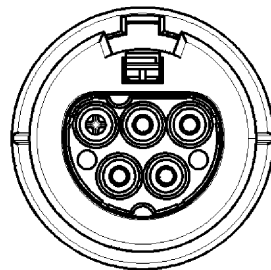
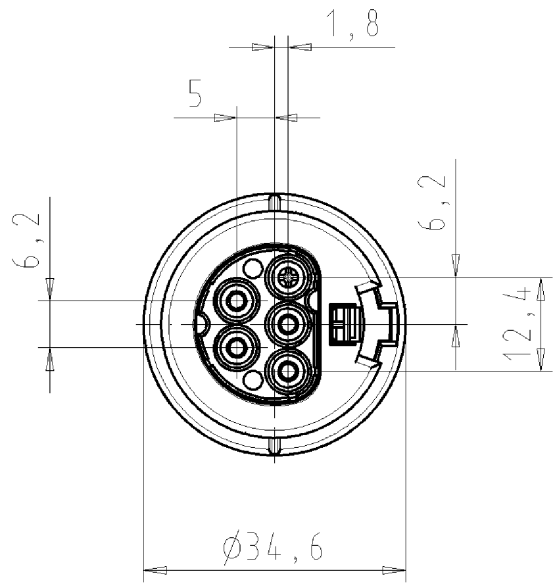
F

Teile-Nr./ part-nr.	Farbe:/ color:	Type
96.042.4153.1	schwarz, ähnl. RAL 9005/ black, similar to RAL 9005	RST2014S S1 ZR2 V SW
96.042.4153.0	lichtgrau, ähnl. RAL 7035/ lightgrey, similar to RAL 7035	RST2014S S1 ZR2 V GL

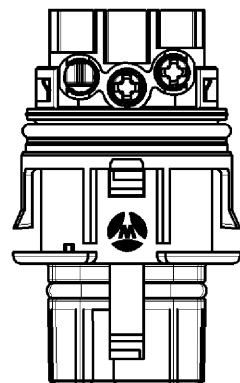
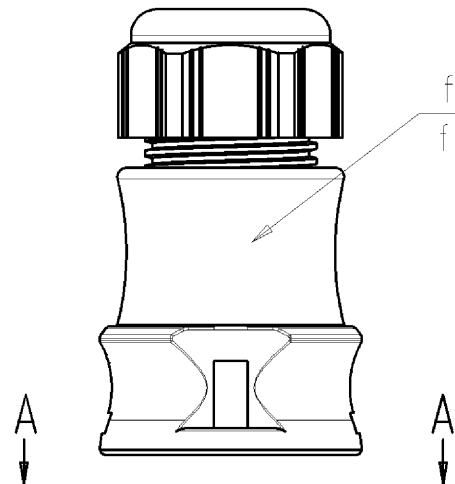
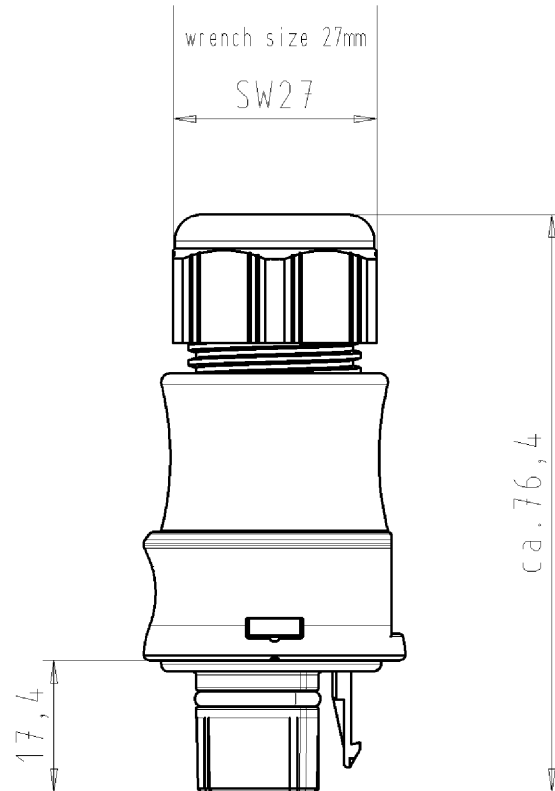
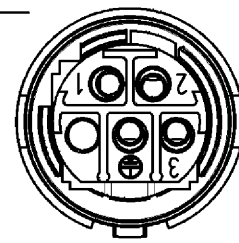
Verpackungseinheit: je 100 Stück
packaging unit: per 100

a

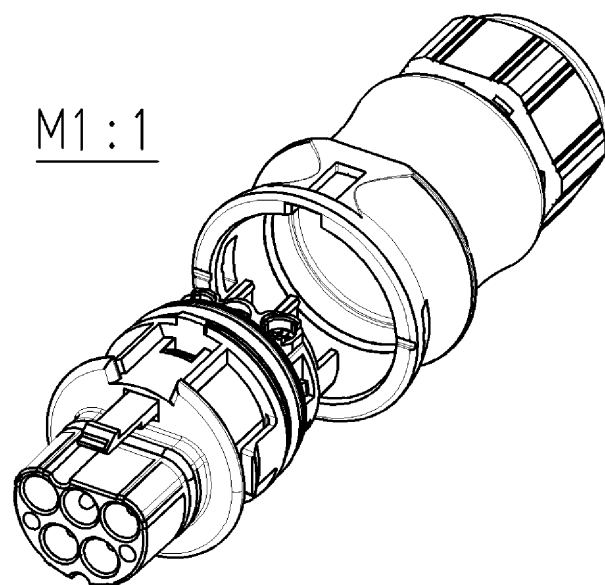
Tolerierung nach DIN 7167/Tolerance system acc. to DIN 7167. [This DIN-standard describes the envelope principle. According to the envelope principle the deviations of form and parallelism are limited by the size tolerances].						nein/no <input checked="" type="checkbox"/> Stoffverbots- und Deklarationsliste nach UU-TQM-05/03 ist einzuhalten. Conformity with Wieland document UU-TQM-05/03 (list of prohibited / declaimable hazardous substances) to be declared!							
Freitoleranz nach General tolerance				CAD - Zeichnung, keine manuellen Änderungen CAD - drawing, no manual modifications allowed				1.Verwendung: - First Use:				Blatt: 1 von 1 Sheet: 1 of 1	
	/		Werkstoff/Material	2005	Tag/Date	Name	T	Zeichnung Nr./Drawing No.				Index	
	/			gezeichnet drawn	13.09.	Kneitz		96.042.4153.0 01K a					
	/			geprüft checked	-	-							
	/			Normgepr. Stand. check	-	-		Maße in mm/Dimensions are in mm					
	/	Vol.	mm³	Off./Surf.	mm²	Ersatz für/Replacement for: -							
	/		wieland	Type	Benennung/Title								
a	08.12.2005/				STECKERTEIL MIT ZUGENTLASTUNG								
Index	Datum / Blatt Date / Sheet				male connector with cord grip								
Änderung/Revision					Schraubanschluß ohne Drahtschutz/screw-connection without wire protection								
		Elektrische Verbindungen		siehe Tabelle		Standardkodierung 0/standard-keying 0 (250V/400V/20A)							



A-A



M1:1



Weitergabe sowie Vervielfältigung dieses Dokuments, Verwertung und Mitteilung seines Inhalts sind verboten, soweit nicht ausdrücklich gestattet.
The reproduction, distribution and utilization of this document as well as the communication of its contents to others without express authorization is prohibited.