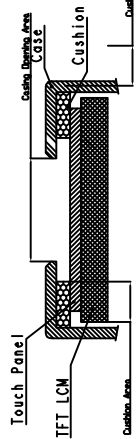
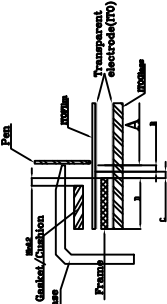


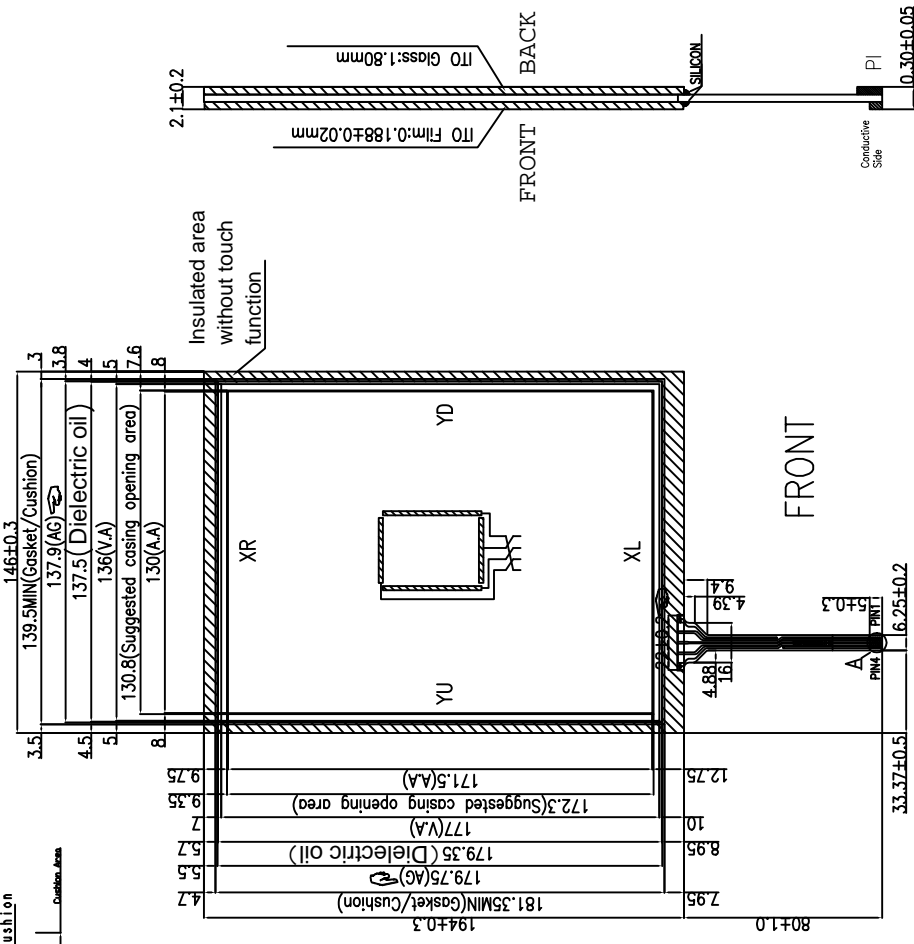
REV	ECN NO.	DESCRIPTION	SIGN	DATE
A				



Structure and Area definition

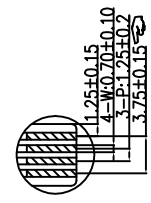


Active area which guarantees a touch panel operation with the following characteristics when passed:
 (1) Operation force, (2) Electric characteristics, (3) Tapping durability, (4) Open sliding durability, (5) Repetition non-guaranteed area.
 The area which does not guarantee a touch panel operation is called a non-guaranteed area. The performance and durability such as a remaining durability becomes about one-tenth compared with the active area (area-Q) as guaranteed area) and its operation force requires about double. About 10mm from the boundary of the active corresponds to this area.
Pressing prohibition area.
 The area which forbids pressing, because an excessive load is applied a transparent electrode and a serious damage is given to touch panel function by pressing. This area is marked with a diagonal line.
 The area which does not activate even if passed.



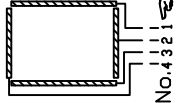
Please double check the points marked in finger.

- Notes:**
- Type: Film to Glass
 - Operating Voltage: ≤5V
 - operation Temperature: -20°C~70°C
Storage Temperature: -30°C~80°C
 - Life Time: ≥1,000,000 times;
 - Connect Material: FPC
 - Response Time: ≤10ms
 - Linearity: ≤1.5%
 - Transmittance: ≥78%
 - Surface Hardness: ≥3H (Pencil)
 - operation force: ≤120g
 - Resistance:
(Anti-glare Hard & Mate anti-newton ring coating ITO Film): 1000~5500
(Stand ard ITO Glass): 2500~8500
 - Unspecified Tolerance: ±0.30
 - All materials in the drawing coincide with the RoHS&halogen free requirement



Touch Panel Pin Assignment

Pin No.	Description	XL	YU	XR	YD
1					
2					
3					
4					



PIN No. 4 3 2 1

CUSTOMER APPROVED:		VISION		RACE MODEL:	
DISPLAY SOLUTIONS		CUSTOMER MODEL: RTP-084			
SCALE	UNIT	3rd Angle	DESIGNED	FJU	20250605
1:1	mm	☑	CHECKED	LCB	20250605
REV	Ver.1	SIZE	APPROVED	PGJ	20250605
		A3			
		1 OF 1			