

EMC Components

ACH Series ACH3218, 4518 Types

3-Terminal Filters for DC Power Line SMD

FEATURES

- These T-type EMC filters comprise ferrite beads and chip capacitors and are engineered to handle high current levels.
- They provide highly effective EMC suppression.
- Because their structures are almost entirely ferrite, they exhibit excellent attenuation characteristics.
- Available for reflow soldering.
- It is a product conforming to RoHS directive.

PRODUCT IDENTIFICATION

ACH 3218 - 223
(1) (2) (3)

- (1) Series name
- (2) Dimensions
- (3) Capacitance

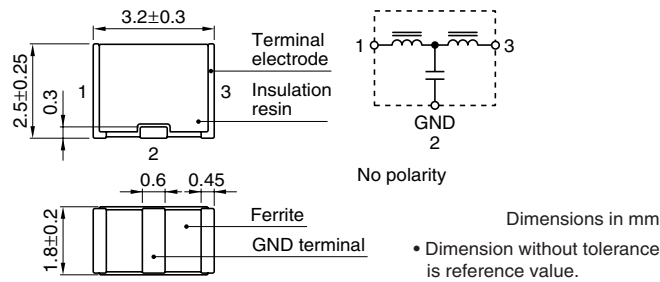
TEMPERATURE RANGES

Operating/Storage -25 to +85°C

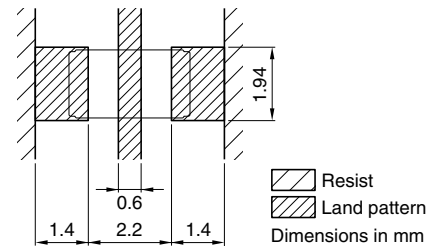
PACKAGING STYLE AND QUANTITIES

Packaging style Quantity
Taping 1000 pieces/reel

ACH3218 TYPE SHAPES AND DIMENSIONS/CIRCUIT DIAGRAM



RECOMMENDED PC BOARD PATTERN REFLOW SOLDERING



ELECTRICAL CHARACTERISTICS

Part No.	Maximum attenuation frequency (MHz)	25dB attenuation frequency range (MHz)	Rated voltage Edc (V)max.	Rated current (A)max.	DC resistance (Ω)max. [Terminal No.1 to 3]	Insulation resistance (MΩ)min. [Terminal No.1 to 2/No.2 to 3]
ACH3218-223	17	11 to 55	20	1.5	0.06	1000
ACH3218-103	27	17 to 60	20	1.5	0.06	1000
ACH3218-682	37	22 to 75	20	1.5	0.06	1000
ACH3218-472	45	30 to 85	20	1.5	0.06	1000
ACH3218-332	55	37 to 90	20	1.5	0.06	1000
ACH3218-222	65	45 to 105	20	1.5	0.06	1000
ACH3218-152	80	60 to 115	20	1.5	0.06	1000
ACH3218-102	100	80 to 140	20	1.5	0.06	1000
ACH3218-681	120	95 to 150	20	1.5	0.06	1000
ACH3218-471	145	120 to 180	20	1.5	0.06	1000
ACH3218-331	165	130 to 210	20	1.5	0.06	1000
ACH3218-221	200	170 to 250	20	1.5	0.06	1000
ACH3218-151	240	205 to 280	20	1.5	0.06	1000
ACH3218-101	300	265 to 340	20	1.5	0.06	1000
ACH3218-680	370	340 to 420	20	1.5	0.06	1000
ACH3218-470	450	420 to 500	20	1.5	0.06	1000
ACH3218-330	530	500 to 600	20	1.5	0.06	1000
ACH3218-220	650	600 to 700	20	1.5	0.06	1000

• Conformity to RoHS Directive: This means that, in conformity with EU Directive 2002/95/EC, lead, cadmium, mercury, hexavalent chromium, and specific bromine-based flame retardants, PBB and PBDE, have not been used, except for exempted applications.

• Please contact our Sales office when your application are considered the following:
The device's failure or malfunction may directly endanger human life (e.g. application for automobile/aircraft/medical/nuclear power devices, etc.)

• All specifications are subject to change without notice.

EMC Components

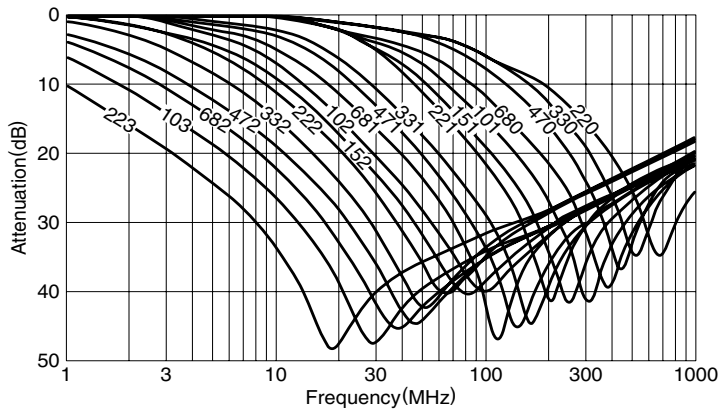
ACH Series ACH3218, 4518 Types

3-Terminal Filters for DC Power Line SMD

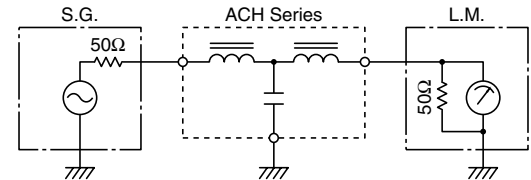
ACH3218 TYPE

TYPICAL ELECTRICAL CHARACTERISTICS

ATTENUATION vs. FREQUENCY CHARACTERISTICS

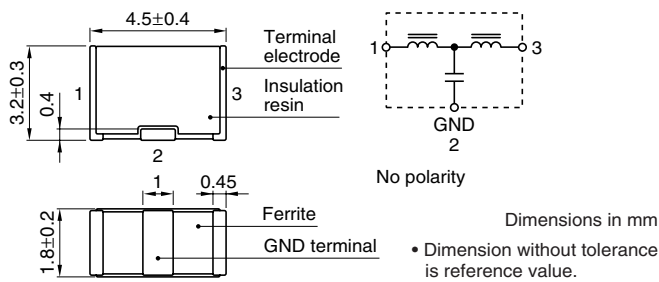


MEASURING CIRCUIT

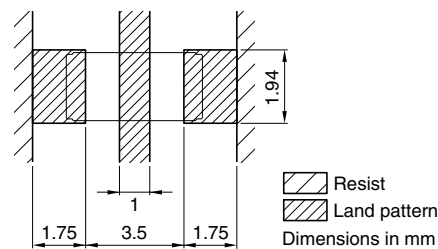


ACH4518 TYPE

SHAPES AND DIMENSIONS/CIRCUIT DIAGRAM



RECOMMENDED PC BOARD PATTERN REFLOW SOLDERING



ELECTRICAL CHARACTERISTICS

Part No.	Maximum attenuation frequency (MHz)	25dB attenuation frequency range (MHz)	Rated voltage Edc (V)max.	Rated current (A)max.	DC resistance (Ω)max. [Terminal No.1 to 3]	Insulation resistance (MΩ)min. [Terminal No.1 to 2/No.2 to 3]
ACH4518-333	12	6 to 60	50	2	0.04	1000
ACH4518-223	15	9 to 65	50	2	0.04	1000
ACH4518-153	18	11 to 70	50	2	0.04	1000
ACH4518-103	23	15 to 75	50	2	0.04	1000
ACH4518-682	35	20 to 85	50	2	0.04	1000
ACH4518-472	40	25 to 90	50	2	0.04	1000
ACH4518-332	50	35 to 100	50	2	0.04	1000
ACH4518-222	60	40 to 110	50	2	0.04	1000
ACH4518-152	75	50 to 130	50	2	0.04	1000
ACH4518-102	90	65 to 150	50	2	0.04	1000
ACH4518-681	105	75 to 160	50	2	0.04	1000
ACH4518-471	125	95 to 180	50	2	0.04	1000
ACH4518-331	150	115 to 205	50	2	0.04	1000
ACH4518-221	190	150 to 250	50	2	0.04	1000
ACH4518-151	230	190 to 290	50	2	0.04	1000
ACH4518-101	280	235 to 335	50	2	0.04	1000
ACH4518-680	340	290 to 395	50	2	0.04	1000
ACH4518-470	410	360 to 460	50	2	0.04	1000
ACH4518-330	500	450 to 550	50	2	0.04	1000
ACH4518-220	600	530 to 650	50	2	0.04	1000

EMC Components

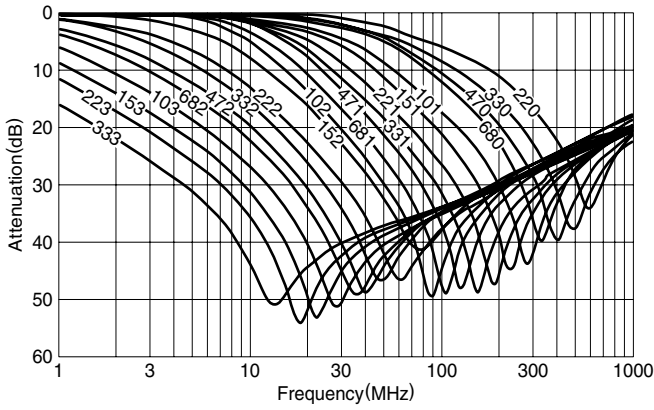
ACH Series ACH3218, 4518 Types

3-Terminal Filters for DC Power Line
SMD

ACH4518 TYPE

TYPICAL ELECTRICAL CHARACTERISTICS

ATTENUATION vs. FREQUENCY CHARACTERISTICS



MEASURING CIRCUIT

