

WHEEL B 160X45/60 RB SWIVEL FORK M22

Wheel series B

Wheels with black rubber ring on welded steel discs fitted with ball bearings, roller bearings or nylon friction bearings.
Wheel fitted with standard roller bearing.

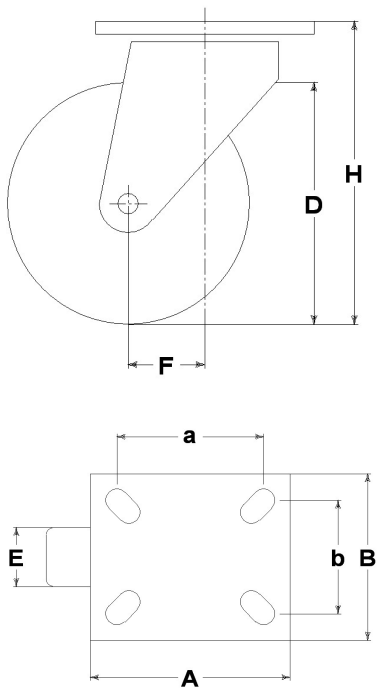
Castor series M22

M22 series, Medium-light pressed steel fork assemblies; swivel version has double ball raceways. Zincplated.



Technical data

Wheel diameter	D	160 mm
Tyre width	E	45,0 mm
Bore diameter	d	20 mm
Weight article		2,540 kg
Hub width	L	60 mm
Overall height	H	196 mm
Top plate outer dimensions	AxB	135x110 mm
Bolt hole spacing	axb	105x75 mm
Bolt hole spacing	axb	105x80 mm
Fixing bolt diameter	g	M10
Offset	F	56 mm
Fork width	U	60 mm
Load Capacity		180 kg



Related Articles

- Spare part wheel: [12078](#)
Version with thread-guards: [12278PF](#)
Version with footguard: [12278PP](#)
Version with trailing brake: [12278FR](#)
Version with trailing brake and thread-guards: [12278FRPF](#)
Version with trailing brake and footguard: [12278FRPP](#)

GENERAL INFORMATION / RECOMMENDATIONS AND WARNINGS

The cited text and the complete catalogue in their most up-dated versions are available in the OEM's website page www.lagspa.it/downloads. The dimensions, descriptions, specifications and illustrations herein are indicative and subject to variations without notice. The fact that products are illustrated herein does not necessarily imply they are available from stock nor does it place us under any obligation to supply them. Tests carried out refer to the original products with original accessories: the replacement of one of the components with others of different manufacture might prevent the same results from being achieved and will automatically invalidate any guarantee. Please contact our technical service concerning any special application.