

GC9802/GC8802 PLC DEMO & EVALUATION NODE USER GUIDE



GC8802, GC9802, GC-Net and the gridComm logo are trademarks of gridComm Pte Ltd registered in Singapore and other countries.

GRIDCOMM MAKES NO REPRESENTATION, WARRANTY, OR CONDITION OF ANY KIND, EXPRESS, IMPLIED, STATUTORY, OR OTHERWISE OR IN ANY COMMUNICATION WITH YOU, INCLUDING, BUT NOT LIMITED TO, ANY IMPLIED WARRANTIES OF MERCHANTABILITY, SATISFACTORY QUALITY, FITNESS FOR ANY PARTICULAR PURPOSE, NONINFRINGEMENT, AND THEIR EQUIVALENTS.

No part of this publication may be reproduced, stored in a retrieval system, or transmitted, in any form or by any means, electronic, mechanical, photocopying, recording, or otherwise, without the prior written permission of gridComm Pte Ltd

Copyright ©2014 by gridComm Pte. Ltd.



Contents

1. Introduction- GC9802 PLC Demo & Evaluation Kit	4
2. Basic Setup to Connect GC9802 Demo Eval Kit to Host PC via PLCM Utilities GUI	5
3. Operation Modes.....	22
4. gridComm GC-Net Simple Broadcast Communications	22
5. gridComm GC-Net Point-to-Point Communications	24
6. gridComm GC-Net Auto-Routing Network Communications	25
7. gridComm GC-Net Auto-Routing Software.....	27
8. GC-Net Broadcast Routing Communications	37
9. Network Management Commands	39
10. GC-Net PLC Quick Reference	42
11. Dimensions and Pins Descriptons	44
12. FAQ.....	46
13. Contact Information	49
14. Revision (051-03)	49

1. Introduction- GC9802 PLC Demo & Evaluation Kit



Figure 1 - The GC9802

The GC9802 PLC Demo & Evaluation kit hooks up with the gridComm PLCM_Uilities tool via a serial cable (UART, RS232 or RS485 cable) and communicates over a transparent protocol. Comprising a GridComm GC8802 Power Line Communication (PLC) Module, a 12V@300mA DC Power Supply and a Serial interface (RS232 port available), the GridComm GC9802 Power Line Communication (PLC) Module Demo & Evaluation Node serves as the most convenient way to evaluate GC8802 when connected to AC mains via a power cable as shown in Figure 2. The GC8802 PLC Module utilizes GridComm GC2200, an OFDMA Power Line Communication Transceiver which has 18 independent channels capable of communicating over 54 carrier frequencies in a wide frequency range from 5 KHz to 500 KHz. This allows it to adapt to varying noise conditions in power lines. Channel independence also allows nodes to communicate on different frequencies, which may help prevent data collisions.

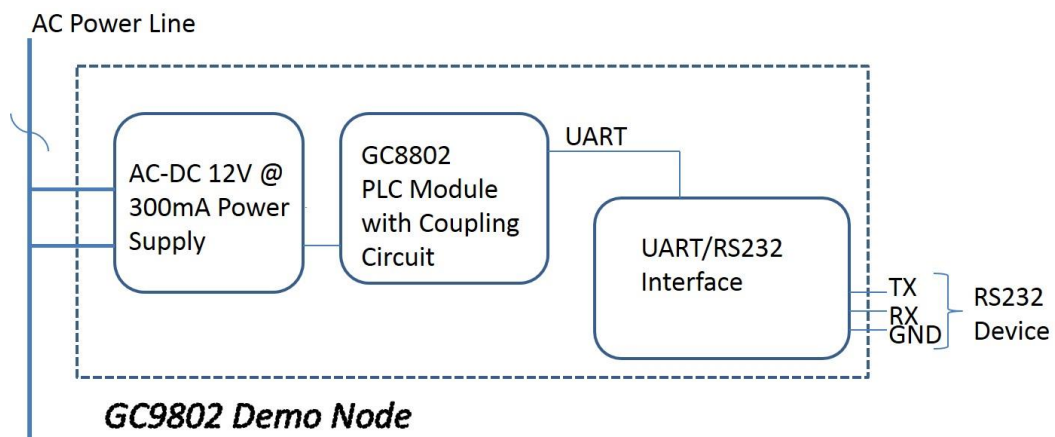


Figure 2 - The block diagram of GC9802

The GC8802 module is designed to be used as a Slave node and is ideal for use in noisy environments where it is superbly effective in tackling signal variations that are commonly present in real-life power line applications due to changes in line impedance, signal attenuation and other impulsive noise issues. Its low cost, good performance and multiple features make it very attractive in applications such as Advanced Metering Infrastructure (AMI), Automated Meter Reading (AMR), Smart Lighting Control, Industrial/Home Automation, Alternative Energy, M2M and others.

2. Basic Setup to Connect GC9802 Demo Eval Kit to Host PC via PLCM Utilities GUI

The GC9802 supports a direct RS232 interface.

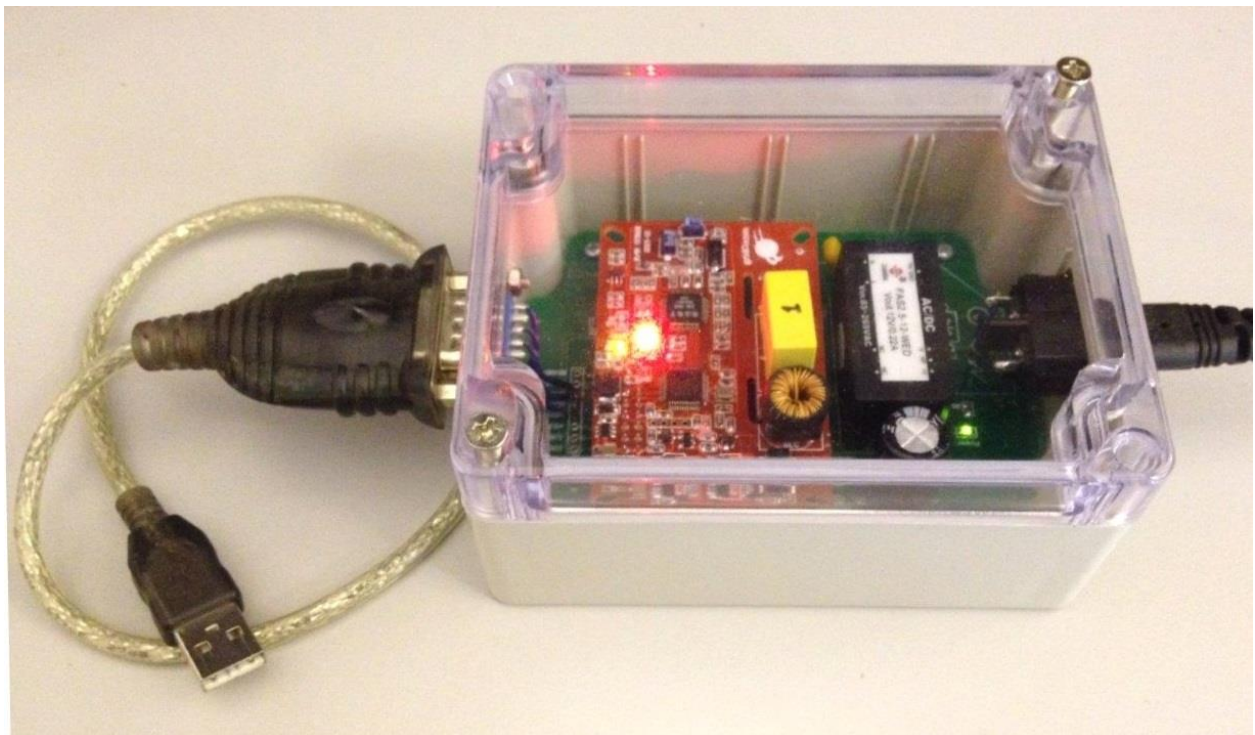


Figure 3 – GC9802 Connection with a USB-RS232 Cable

Figure 3 shows a typical RS232-USB cable (not provided) connection with a GC9802. The default settings for the PLC modem serial communications are pre-configured ex-factory at 115200 Baud, No Parity Bit, 8 Data Bits and 1 Stop Bit. When the GC9802 is powered up under “Auto Routing” or “Broadcast Routing” mode, the Power LED will light up and will flash every 10 seconds showing that it is working properly. When in “Point-to-Point” or “Simple Broadcast” mode, it will flash every 0.2 seconds.

To use the PLCM Utilities GUI, connect the GC9802 to the RS232-USB cable and connect the USB connector of the cable to a USB port of a Windows PC.

Before using the GC9802 to communicate, it is necessary to configure the module. Start the PLCM Utilities GUI on the PC which is connected to the GC9802 and use the GUI to configure the GC9802. The following is a description of how to use the GUI.

2.1 “Communication” Tab

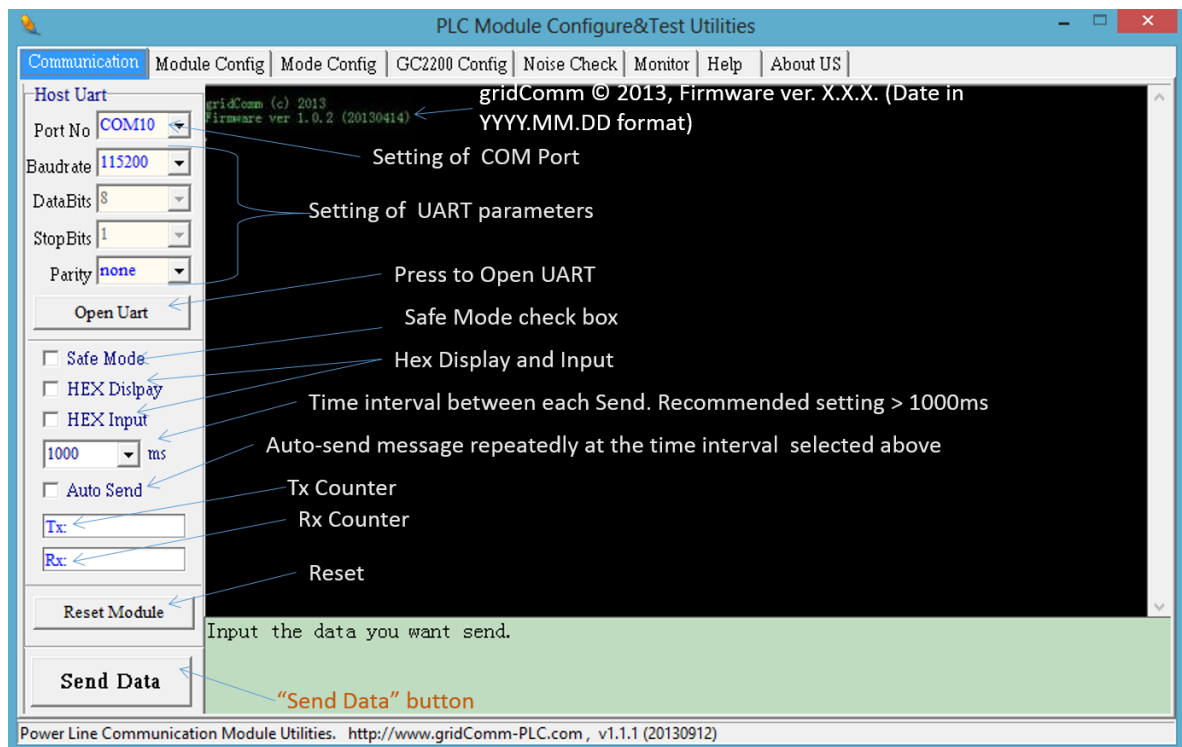


Figure 4 – “Communication” Settings

- a) **Host UART:** Click on the “Communication” tab to set the virtual COM port that is connected to the USB-UART board. To begin with, leave the rest of the serial communication parameters as default: 115200 Baud rate, No Parity Bit, 8 Data Bits and 1 Stop Bit. These are the PC UART communication settings with the device. The Host PC simulates a concentrator or terminal device connected to the device. Start the UART communications by toggling “Open UART” until it is depressed. If the Host UART is set properly, a message, “gridComm © 2013, Firmware ver. X.X.X (Date in YYYY.MM.DD)” message, will show up in the message window upon powering up or resetting of the device.

b) **Safe Mode:** The Safe Mode serves two functions:

- It can be used to restore the device to default settings (115200 Baud rate, No Parity Bit, 8 Data Bits and 1 Stop Bit) so as to regain access to the device should the user forget the current UART configuration.
- ***It allows the user to amend the device configurations*** regardless of whether the firmware is in locked or unlocked mode. The firmware can be locked or unlocked under the “Mode Config” tab. Locking the firmware prevents accidental changes to the settings. Unlocking the firmware from Locked mode allows the user to make changes to all settings under Module Config, Mode Config and GC2200 Config tabs.

To activate Safe Mode, check the “Safe Mode” checkbox and reset the device. Upon reset, the system will enter into Safe Mode within 2 seconds. The “Safe Mode” checkbox automatically unchecks.

c) **HEX Display/HEX Input:** If HEX data is to be used, check the HEX Display and HEX Input boxes.

d) **“Time”ms/Auto Send:** Setting the time in “ms” sets the time interval between each Send when “AutoSend” is checked. It is highly recommended to start with more than 1000ms for Point-to-Point mode and larger values for Auto-routing or Broadcast Routing mode depending on the number of tiers in the network. The 1000ms is to allow sufficient time for the packet to be sent over the PLC. If the time is too short, the transmissions may collide and data will be lost. Try setting longer time intervals if packets are lost.

e) **Tx/Rx:** Under the “Auto Send”, the figure next to the “Tx” and “Rx” shows the number of characters sent or received.

f) **Reset Module:** All “Write” functions such as “Write Into Module” and “Write Parameter” must be followed by resetting the device via the “Reset Module” button. This will then register the changes into the device. **Send Data:** Hitting “Send Data” will send the data contained in the green message window over the power lines to destination PLC node(s).

2.2 “Module Config” Tab

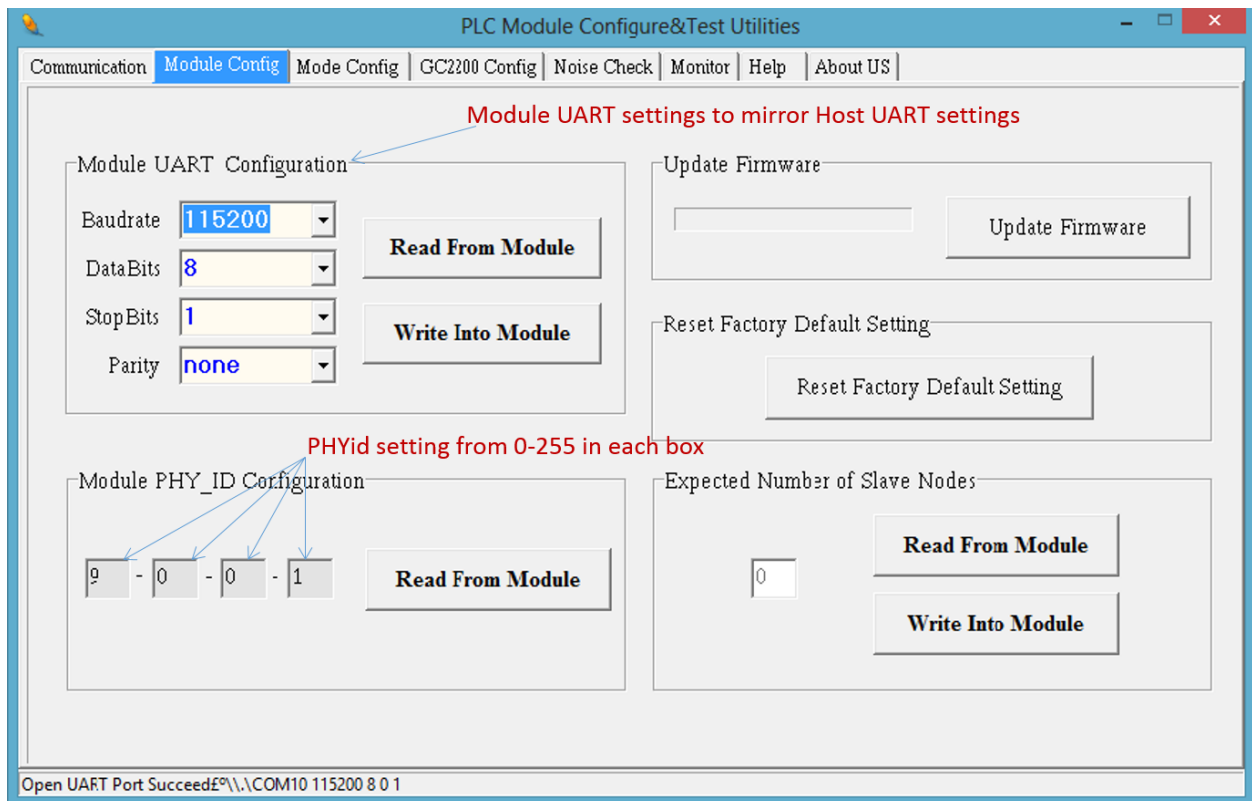


Figure 5 – “Module Config” Settings

- a) **Module UART Configuration:** Click “Read From Module” to read the UART settings. To make changes to the settings to connect with the Host UART(or your concentrator or terminal device UART), enter the values accordingly and click “Write Into Module”. The default settings of the device are 115200 Baud rate, No Parity Bit, 8 Data Bits and 1 Stop Bit. ***After changes are made to the settings, reset the device to effect the changes to the device. It is important to note that settings for the device UART must be exactly the same as the Host UART (or the concentrator or terminal device UART) before the communication link can be established.*** If the UART settings on the device are not known, Safe Mode may be entered as described in “Safe Mode” section in page 7 which would allow the user to gain access to the device to re-configure the UART settings.
- b) **Module PHY_ID Configuration:** Click “Read From Module” to show the pre-programmed PHY_ID. The value in each of the four boxes under “Module PHY_ID Configuration” is an 8

bit number. The valid PHY_IDs for the GC8802 device range from 002.000.000.000 to 002.255.255.255. All PHY_IDs are unique and no two devices share the same PHY_ID.

- c) **Update Firmware:** Allows the user to update device firmware (contained in a bin file) via the UART. This works only in Safe Mode or if Locked mode is unchecked. When the button is clicked, the GUI will prompt for the bin file to be used as the update. After choosing the correct bin file in your folder on your PC, the update process starts. When the firmware is updated, the device will reset automatically.
- d) **Reset Factory Default Setting:** This resets the settings to factory default:
Module UART Configuration to 115200 baud rate, 8 Data Bits, 1 Stop Bit and none Parity
Expected Nuber of Slave Nodes to 1,
Operation Mode Configuration to "Simple Broadcast",
Assign Master Node PHY_ID of Network to "0.0.0.1", "0.0.0.2" and "0.0.0.3",
Connection ID to "1",
Output Power to "350", and
GC2200 Parameters Configuration frequencies to 180.6KHz, 214.8KHz, 161.1KHz, 141.6KHz, 195.3KHz, 346.6KHz, 92.77KHz and 395.5 KHz
- e) **Expected Number of Slave Nodes:** The expected number of slave nodes is the total number of slave nodes (not including the master node) that is expected to be deployed in a network. The master node will determine if the total number of slave nodes registered during network discovery phase matches this Expected Number of Slave Nodes. As soon as this number matches, the RUN LED on the master node will start flashing every 0.4 sec rather than every 10 sec seen earlier. Hence, without knowing the Routing Table, the user is able to tell if the given number of slave nodes have been registered in the network by just observing the rate of flashing of the LED on the master node. If the RUN LED reverts to flashing every 10 sec, it means that one or more slave nodes have been disconnected from the network. However, should there be more slave nodes detected (more than the "Expected Number of Slave Nodes"), the master node will still flash every 0.4 sec. For details on the number of nodes discovered, one may look at the Routing Table information, see "Routing Table" section in page 18. Click "Read From Module" to display the existing settings for this field. To make changes to the existing settings, enter the values accordingly and click "Write Into Module". Remember to reset the device after performing "Write Into Module".

2.3 “Mode Config” Tab

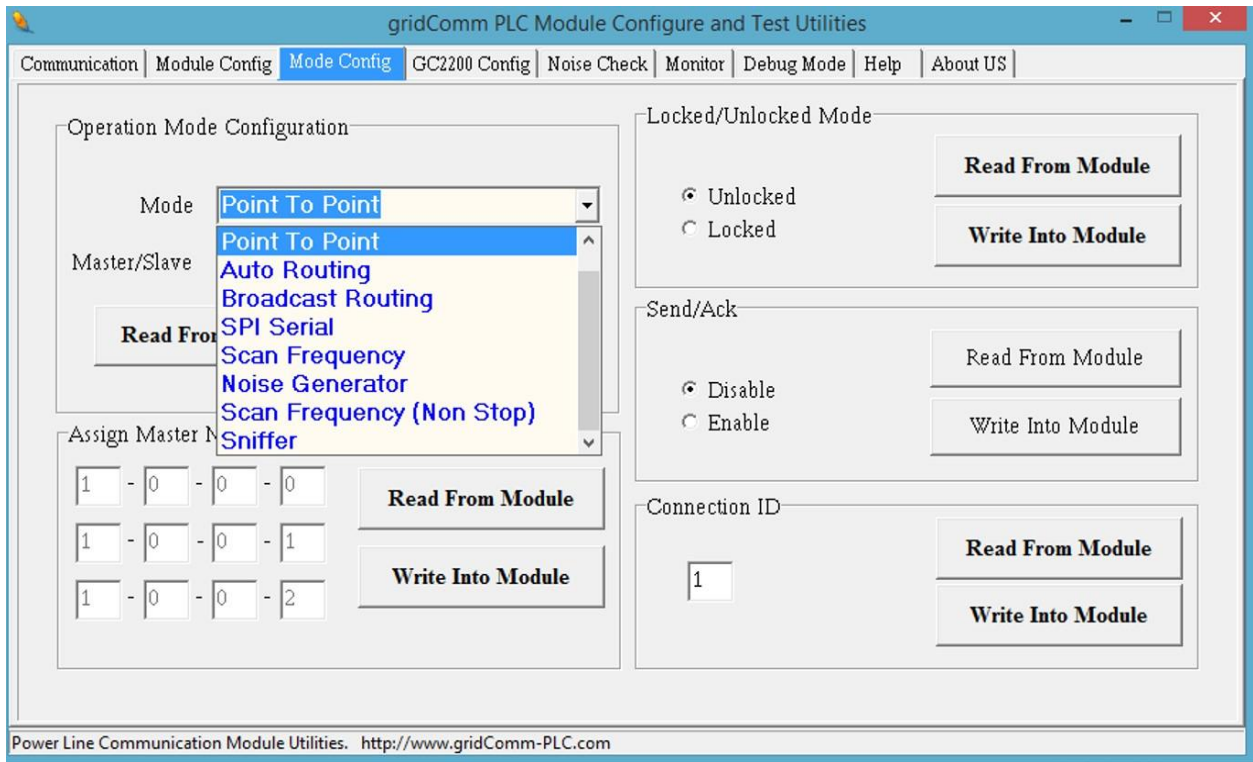


Figure 6 – “Mode Config” Settings

- a) **Operation Mode Configuration:** There are four selectable operation modes to choose from, namely the “Point-to-Point”, “Simple Broadcast”, “Auto-Routing” and “Broadcast Routing”. In addition, there is also an evaluation mode called “SPI Serial”.
- “Point-to-Point” is between two nodes with no routing/repeater
 - “Simple Broadcast” is between any node to a group of nodes in a Star-configuration without routing/repeater.
 - “Auto-Routing” is using network routing via PHYid addressing.
 - “Broadcast Routing” is a combination of Broadcast and Auto-Routing without PHYid addressing.
 - “SPI Serial” is actually an evaluation option to interface with gridComm PLC_Demo GUI and Link Adaptation demo software. The PLC_Demo GUI and Link Adaptation demos enable user detailed evaluations at the chip level of GC2200. When resetting Operation Mode from “SPI Serial” to other modes, a hard power reset is required. For more details, please contact your sales agent.
 - “Scan Frequency” will scan for the best channel frequencies based on a combination of success rate and RSSI (Received Signal Strength Indicator) values. For *firmware version GC8802_v2_0_1.bin* and below, Scan Frequency will scan

between two nodes. This operation will complete in about 10 minutes. For *GC8802_v2_0_2.bin* and onwards, Scan Frequency is able to scan up to 8 nodes non-stop. See “Monitor Tab” section in 14 for more details.

- “Noise Generator” allows the node to become a noise generator sending out signals based on Output Power setting one frequency at a time across the entire 500KHz spectrum.
- “Scan Frequency Non Stop” performs Scan Frequency indefinitely for *firmware version GC8802_v2_0_1.bin* and below. For *GC8802_v2_0_2.bin* and onwards, it behaves the same as “Scan Frequency”.
- “Sniffer” turns the node to only listen to the power lines picking up valid GC2200 signals and in turn transmit these signals to the serial communication link (UART, RS232, RS485).

More details regarding the operation modes are illustrated in the following sections.

- b) **Master/Slave:** Setting “Master” or “Slave” will assign the particular PLC node as master node (not applicable for GC8802) or slave node respectively, which is only available under “Auto-Routing” and “Broadcast Routing” mode. ***Note that there can only be one master node in a network. The maximum number of slave nodes controlled by one master node is 240. For networks exceeding 240 PLC nodes, multiple master nodes would need to be installed. Each master node would then be controlled by a commanding node at the concentrator. For more details, please see “Network Size” in page 37.***

“Read From Module” will show the status of the operation mode as well as the assigned role (master or slave) of the device. “Write into Module” needs to be performed as long as new configurations are entered. Remember to reset the device after performing “Write Into Module”.

- c) **Assign Master Node PHYid of Network:** Assigns a particular PLC node with the given PHYid as the master node of the network that this slave node is in. This will make this device recognize a particular node in the network as the master node. There are three slots to assign for Master Node PHYid. This is to enable a slave node, connected in a 3-Phase network, to freely connect with any of the master nodes. This is useful when one does not know which phase a slave node is connected to. When the three master nodes are interconnected to a concentrator via UART or RS485 (round-robin way), it effectively bridges all the slave nodes in each phase into a single network system.

Perform this operation only under “Auto-Routing” and “Broadcast Routing” mode and only if the device is set as “Slave” under “Operation Mode Configuration”. Click “Read From Module” to display the existing settings. To make changes to the existing settings, enter the values accordingly, and then click “Write Into Module”. Remember to reset the device after performing “Write Into Module”.

- d) **Locked/Unlocked Mode:** If “Locked” is checked, performing a reset will lock the parameters of the device from being altered during operation. To make changes to the

parameters, user must enter Safe Mode (see “Safe Mode” section in page 7) to make changes or to uncheck Locked mode to return to Unlocked mode. Any operation to check or uncheck the Locked/Unlocked Mode must be followed by “Write Into Module” and a reset. Click “Read From Module” to display the existing settings.

- e) **Send/Ack:** This feature is only available for firmware version 2.00 and above. With “Send/Ack” enabled, the network layer will continue to retry sending the same data packet multiple times over different pre-configured frequencies should a **Send** from the Master to the Slave is not **Acknowledged**. It is important to note that the same “Send/Ack” setting must be applied across all nodes within the same network. Any operation to check or uncheck must be followed by “Write Into Module” and a reset. Click “Read From Module” to display the existing settings.
- f) **Connection ID:** In Point-to-Point mode, a pair of communicating PLC nodes must share the same Connection ID. A Data Received acknowledgement scheme that checks against the Connection ID is implemented to ensure that only data packets from the intended recipients are accepted and not data from other PLC nodes in the vicinity. Click “Read From Module” to display the existing settings. To make changes to the existing settings, enter the values accordingly and click “Write Into Module”. Remember to reset the device after performing “Write Into Module”.

2.4 “GC2200 Config” Tab

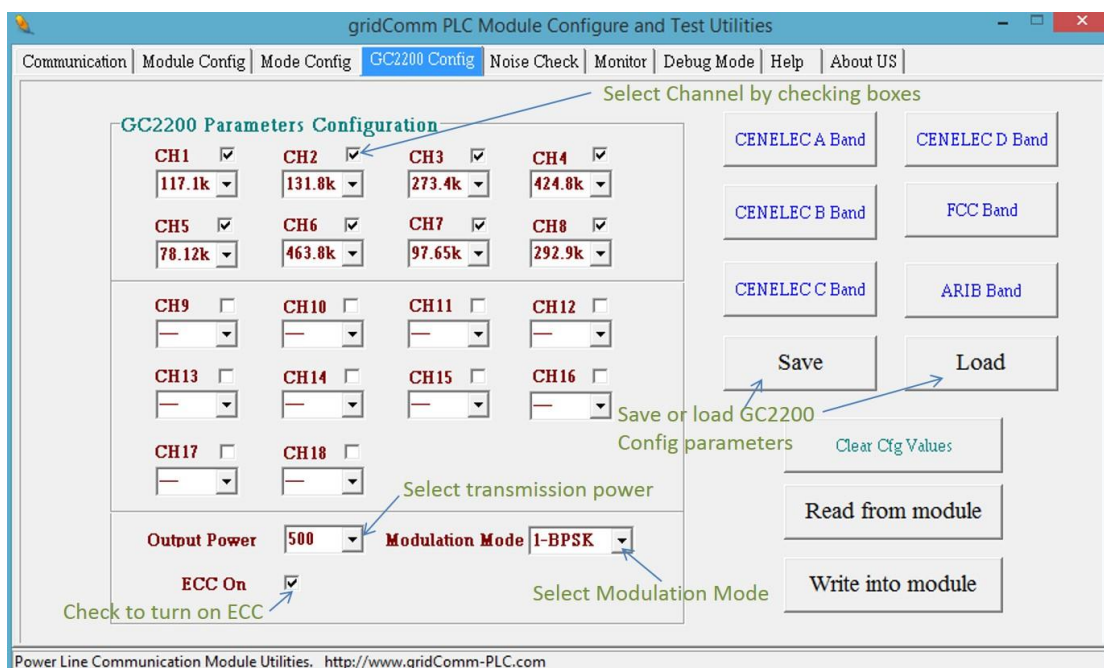


Figure 7 – “GC2200 Config” Settings

- a) **GC2200 Parameters Configuration:** Configures the transmission channels and the preferred carrier frequencies. Check the channel boxes (you may check any number of boxes) and select the frequencies from the pull-down menu. *Note that communications between any two PLC nodes can only happen if they have at least one frequency in common. It is suggested that all nodes in the same network have the same set of frequencies.*
- b) **Output Power:** Select the “Output Power” from 10 to 500. As the power is not regulated, it is a good practice to set at 250 when the nodes are closely positioned. Setting at 500 in close proximity may distort the signals resulting in packet losses. Ensure that any change in settings be followed by clicking “Write Parameter” and power cycling the device.
- c) **ECC On:** This turns on Error Correction Code. It increases packet transmission and reception timings by about 30%. It is important to note that the same “ECC” setting must be applied across all nodes within the same network. Any operation to check or uncheck must be followed by “Write Into Module” and a reset. Click “Read From Module” to display the existing settings.
- d) **Modulation Mode:** Configures the modulation scheme from a selection of 1BPSK, 3BPSK and 3QPSK. At the PHY layer, the data rate is 1.22Kbps for 1BPSK, 3.66Kbps for 3BPSK and 7.22Kbps for 3QPSK respectively. As a general rule of thumb, 1BPSK is most preferred for maximum robustness. While nodes configured with different modulation schemes could work together, when configuring 3BPSK or 3QPSK, care should be exercised to set the central frequency for each channel to be at least 3 frequencies apart. Any operation to check or uncheck must be followed by “Write Into Module” and a reset. Click “Read From Module” to display the existing settings.
- e) **Preset CENELEC, FCC, ARIB Frequencies:** Automatic selection frequencies under CENELEC A Band, CENELEC B Band, CENELEC C Band, CENELEC D Band, FCC Band or ARIB Band can be done using the appropriately named buttons. Clicking any of these will automatically assign up to six of the eighteen channels within the specified band. Click “Read Parameter” to read the existing settings. To make changes to the existing settings, enter the values accordingly and click “Write Parameter”. Remember to reset the device after performing “Write Parameter”.
- f) **“Save” and “Load”:** The “Save” button saves all the “GC2200 Config” parameter settings, including frequencies, ECC, Output Power and Modulation Mode, into a “.dat” file. The parameter settings can then be loaded into another node by clicking the “Load” button and loading the “.dat” file. This avoids the time-consuming and error-prone exercise of manually configuring many nodes with the same settings.

2.5 “Noise Check” Tab

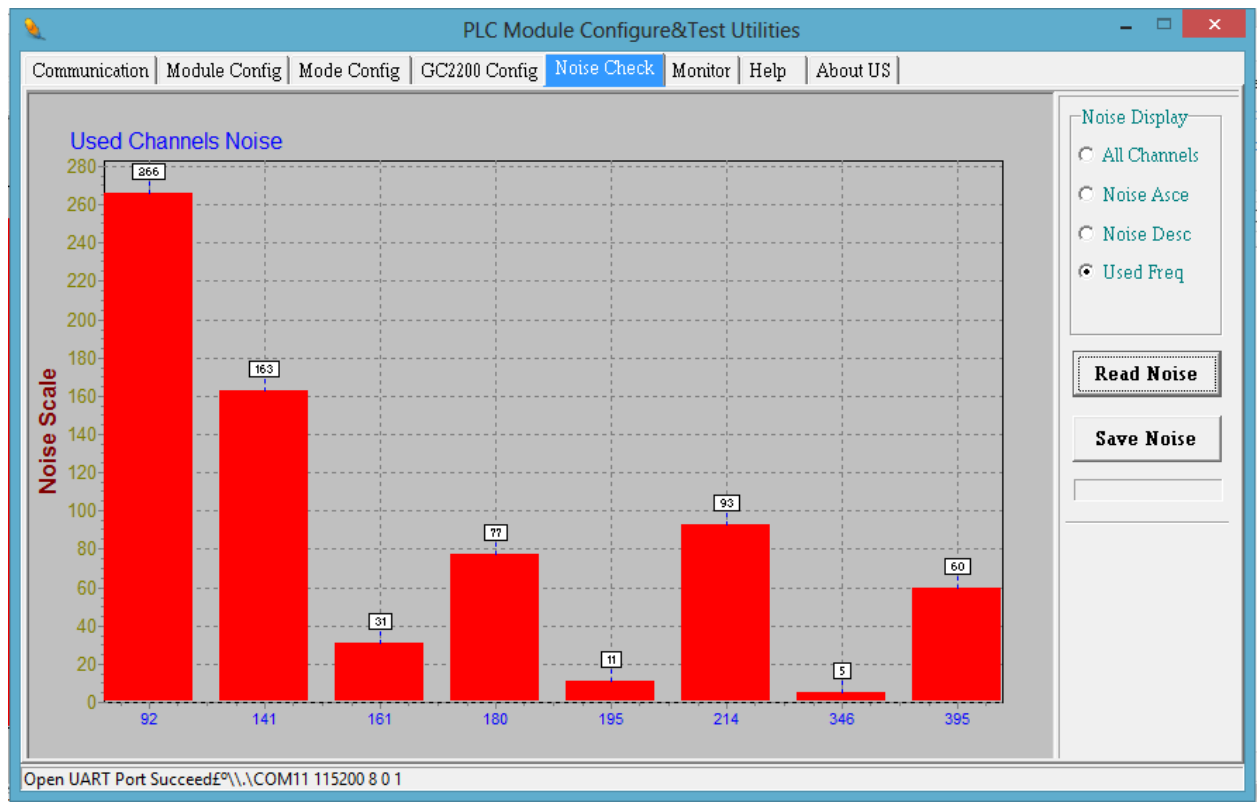


Figure 8 – Noise Check

- a) Go to “Noise Check” tab and click on “Read Noise” to read the noise level on each of the channels. The noise reading is a relative noise figure and does not have a unit. These readings may be used to configure the frequencies for the transmission channels as in “GC2200 Parameters Configuration” section in page 13. It is recommended to use frequencies with noise levels less than 500. ***Note that low noise does not guarantee reliable communications. Attenuation and low impedance loads may also impact communications adversely.***

2.6 “Monitor” Tab

The Monitor tab displays essential information regarding: (1) Frequency vs Received Success Rate and RSSI (2) Routing Table.

- a) **Frequency vs Received Success Rate vs RSSI:**
 - For *firmware version GC8802_v2_0_1.bin* and below, when “Scan Frequency” is selected under “Operation Mode Configuration” which is an option on the “Mode Config” tab, for a pair of nodes), note that one unit must be configured as the

Master and the other as a Slave. The GUI software will initiate a scan across the entire frequency range between the two nodes and display the Received Success Rate and the corresponding RSSI (Received Signal Strength Indicator) values (divided by a factor of 256 with figures between 0 to 256, 256 being the best signal strength).

Under “Monitor” tab, “Freq” shows the carrier frequency in KHz, “Rcv%” shows the percentage of packets received over packets transmitted and “RSSI” which indicates the signal strength of the respective frequency. The RSSI and Rcv% may be used to determine the best frequencies for communications. In general, the higher the RSSI value, the higher the chance of successful communications. However, as shown in Figure 9, there are instances where low RSSI values correspond with higher success rates. This is possible if there are less noise or interference over these frequencies.

At the bottom of the table, the “Output voltage” shows the value of “Outpower” of GC2200 Config, the “Total transmit” shows the total packets transmitted, the “Total receive” shows the total packets received and the “Success rate” shows the percentage of received packets. Note that “Total transmit” and “Success rate” only appear on the Master node table. The GUI for the Slave node is not required to be used in order to perform this function. The table will also present the best 18 sets of carrier frequencies based on success rate. These 18 sets of frequencies will automatically be configured at both the master and slave nodes.

- Set up procedure:
 - i. Go to “Mode Config” tab, configure “Scan Frequency” for both nodes under Operation Mode Configuration.
 - ii. Set one node as Master.
 - iii. Set the other node as Slave.
 - iv. Power up Slave node first.
 - v. When Master node is powered up, Scan Frequency will automatically start.
 - vi. Observe the black window under the “Communication” tab on the Master node. A string of running “|” and “A” will show up. “|” indicates that the Master node is transmitting on a particular frequency while any “A” means it has received acknowledgement from the Slave node on that frequency, example: “|||||AA|||A|||A|AA|”. It is possible that only “|” are shown without “A” which means that there is no communications between the two nodes, which could be due to very strong noise interference or high attenuation on the power lines.
 - vii. Wait for about 10 minutes for Scan Frequency to stop.
 - viii. Observe results under “Monitor” tab as in Figure 9.

- ix. To exit, "Scan Frequency" mode and change to a different operation mode during the scanning process, it is always a good practice to ensure the nodes are in a safe mode before making changes.

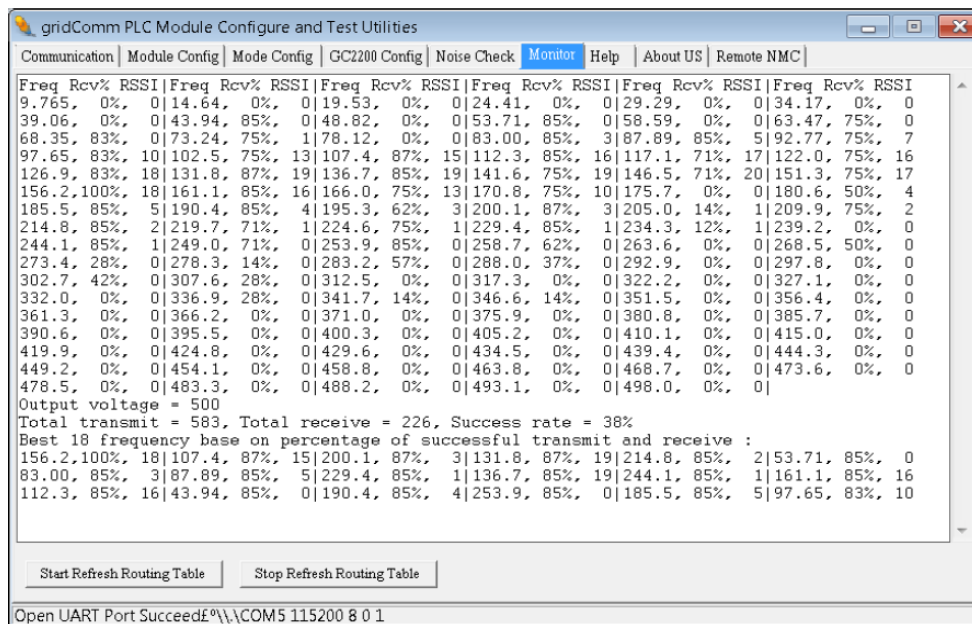


Figure 9 – Frequencies versus Received Success Rate and RSSI Values

- For *firmware version GC8802_v2_0_2.bin* and above, when "Scan Frequency" is selected under the "Operation Mode Configuration" under the "Mode Config" tab, it can scan up to 8 nodes including the master node on the same power lines (i.e. same phase). This advanced Scan Frequency will scan across the entire frequency range and display the result under the "Monitor" tab with the best 18 frequencies ("Freq" in KHz) based on Received Success Rate ("Rcv%") and RSSI values (values from 0 to 256, 256 being the best signal strength). In general, the higher the RSSI value, the higher the chance of successful communications. Also displayed is the success rate of the matrix of nodes in cross-reference.
- Set up procedure:
 - i. Go to the "Mode Config" tab, configure the "Scan Frequency" for all the nodes under "Operation Mode Configuration".
 - ii. Set one node as Master.
 - iii. Set all other nodes as Slave.
 - iv. Set each node with a unique Connection ID under the "Mode config" tab. The Master node MUST always be set as "1" by default, then Set the remaining Slave nodes with a Connection ID from "2,3,4 etc" in sequence order.

- v. Configure the “Expected Number of Slave Nodes” under “Module Config” in all nodes including Master. For example, the “Expected Number of Slave Nodes” is 3 for a network of one master and three nodes.
- vi. Power up the Master node first followed by Slave nodes in any order. This is to speed up synchronization amongst the nodes. Reversing the order might delay synchronization and hence, more time could be needed. If during the course of Scan Frequency, the Master node is reset, it is also highly recommended to reset all other slave nodes to speed up synchronization.
- vii. Once (vi) is done, Scan Frequency will automatically start.
- viii. Observe the black window under the “Communication” tab on the Master node. A string of running “???...” will first be observed indicating that the Master is transmitting and listening over some frequencies but has not received replies from any node yet. A string of running digits from 2 to 8 indicates that the Master has managed to find the corresponding Slave nodes over certain frequencies. For example, “TTTTTT22222333333355555666666888888” indicates that the Master is able to find Slave nodes from 2, 3, 5, 6 and 8. ***It is possible that some nodes might not be found during Scan Frequency due to noise and attenuation. In this case, a repeater might have to be installed somewhere between the uncontactable node and the nearest available node.***
- ix. A minimum time of 10 mins or a minimum Total Transmit Count of 540 should be allowed to scan between 2 nodes before obtaining the results which will be tabulated under the “Monitor” tab. For every additional slave node, an additional 10 mins should be allowed to lapse before obtaining the result. Hence, for a maximum of 7 slave nodes, the total recommended wait time is about 70 minutes equivalent to a Total Transmit Count of 540.
- x. Note that this advanced Scan Frequency will run continuously without stopping. To exit the Scan Frequency mode, and change to a different operation mode during the scanning process, it is always a good practice to enter into Safe mode before making changes.
- xi. Go to the “Monitor” tab of the Master node and look at the scanned result as in Figure 10.
- xii. When the Total Transmit Count hits 540, the best 18 frequencies will be automatically saved under the “GC2200 Config” tab with the first 8 channels checked (“enabled”).
- xiii. The settings under “GC2200 Config” tab may then be saved into a “.dat” file by clicking the “Save” button. To load the same settings to other Slave nodes, simply load the particular “.dat” file by clicking “Load” button.
- xiv. *Under the “Monitor” tab, there is also a cross reference of success rates amongst the nodes arranged in the matrix. Assuming Simple Broadcast mode in a Star network is to be implemented for short latency response, we*

can deduce that the best location to install a master can be either N5 or N6 as both nodes are able to establish communications with the rest of the nodes. However, N5 is clearly the best location, because the minimum success rate is 25% versus 6% from N6. Hence, N5 should be chosen as the Master node location. However, if Auto-Routing or Broadcast Routing mode is used, then the node location may not be of concerns since a multi-tier network with repeaters can be formed to establish connections.

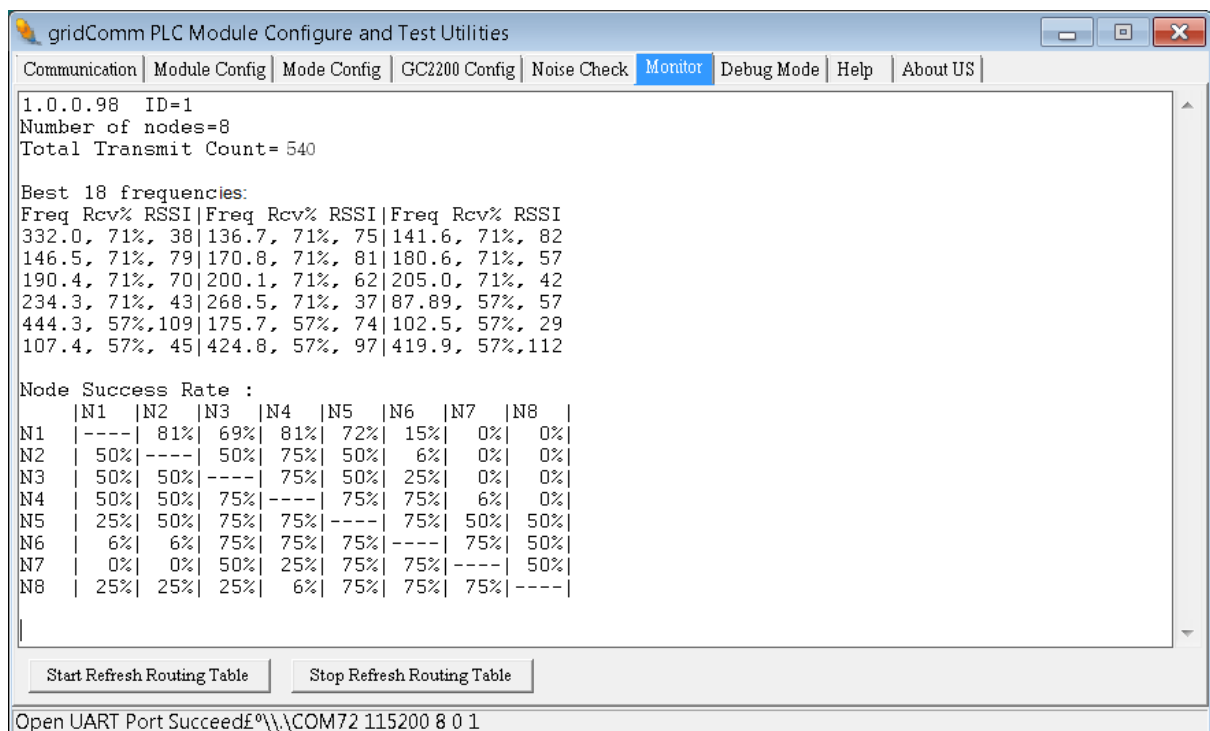


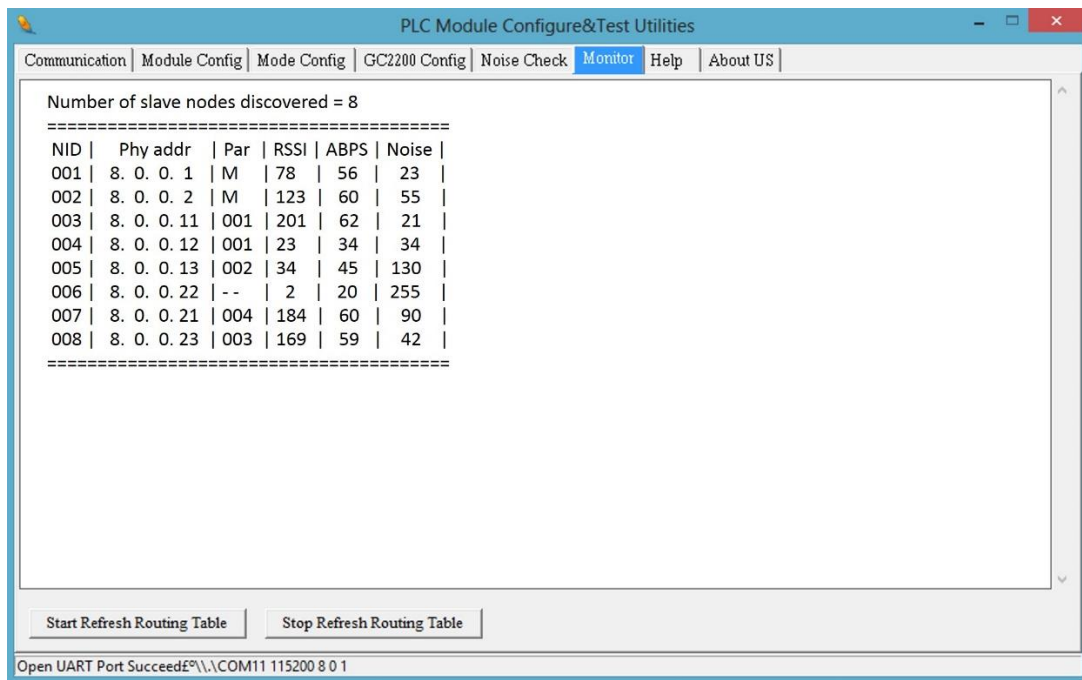
Figure 10– Advanced Scan Frequency with Node Matrix Success Rate Cross-Reference

- g) **Routing Table:** When in “Auto Routing” or “Broadcast Routing” mode, click the “Start Refresh Routing Table” to display the routing information of the PLC network system. “Stop Refresh Routing Table” stops the display. Double click on the screen to clear the screen.. **Note that the routing table display function should only be used by the Master node (eg. GC9200 or GC8101) and not the Slave nodes (eg. GC8802) in Auto-Routing or Broadcast Routing mode. “Routing Table” will have no effect on the GUI connected to a Slave node.**

In the routing table, the number of slave nodes discovered will constantly be updated. The following denotations are also used in the routing table:

- “NID” denotes the Net ID of the nodes of the network.
- “Phy addr” denotes the PhyID or physical ID of the nodes.

- “Par” denotes the Parent node Net ID of the particular node.
- “RSSI” denotes “Received Signal Strenght Indicator” indicating the signal strength of the message received.
- “ABPS” denotes “Average Beakons Per Slot” in percentage (%). This is used to as a measure of quality of the downward communication link based on the success rate of receiving a discovery packet.
- “Noise” is a value from 0 to 255 indicating the noise level present in the power lines in absolute form.



PLC Module Configure&Test Utilities

Communication | Module Config | Mode Config | GC2200 Config | Noise Check | **Monitor** | Help | About US

Number of slave nodes discovered = 8

NID	Phy addr	Par	RSSI	ABPS	Noise
001	8. 0. 0. 1	M	78	56	23
002	8. 0. 0. 2	M	123	60	55
003	8. 0. 0. 11	001	201	62	21
004	8. 0. 0. 12	001	23	34	34
005	8. 0. 0. 13	002	34	45	130
006	8. 0. 0. 22	--	2	20	255
007	8. 0. 0. 21	004	184	60	90
008	8. 0. 0. 23	003	169	59	42

Start Refresh Routing Table | Stop Refresh Routing Table

Open UART Port SucceedE:\COM11 115200 8 0 1

Figure 11 – Routing Table Display

2.7 “Debug Mode” Tab

This feature is available only with firmware version plcm_v1_7_3.bin and above using PLCM_Uilities version plcm_utilities_v205.exe and above. The Debug Mode is a useful feature to help the user to check the communication success rate of any node in the network. Only Auto-Routing and Broadcast Routing modes are supported. The “Debug Mode” tab allows the user to be able to configure the Master node (only the Master node needs to be configured) to remotely poll its Slave nodes registered in the network by sending a data packet of 10 bytes and expecting a return packet of 30 bytes, 60 bytes or 120 bytes depending on the setting in the “Connection ID” under “Mode Config” tab. A “0” set in the “Connection ID” configures for a 30-byte reply, a “1” configures 60 bytes while a “1” configures 120 bytes. To enable Debug Mode, go to Figure 12 – “Debug Mode” Tab and

write 1 into the window followed by clicking “Write Into Module” button and “Reset Module” button under the “Communication” tab. Upon resetting the module, a message “Debug Mode = 1” will be shown in the window under the “Communication” tab and the polling process will begin.

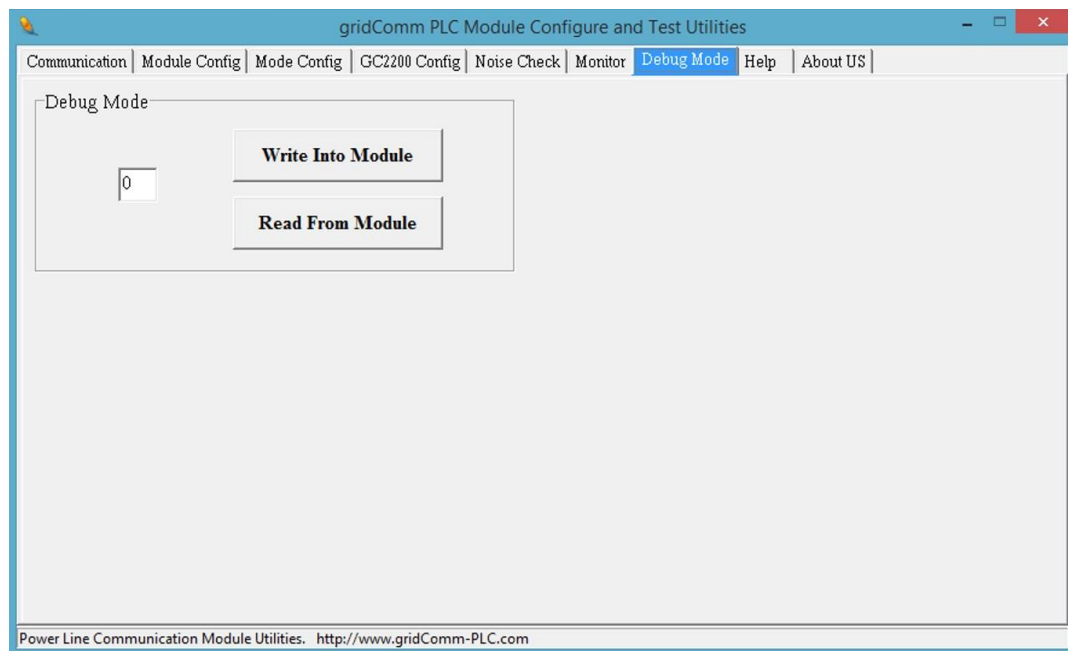


Figure 12 – “Debug Mode” Tab

As the polling progresses, the window under the “Communication” tab will tabulate the results. In Figure 13, the follow messages appear:

```
<count=1, miss=0, fail=0%, node=11>
[from=11, time=6623, maxtime=6623]
<count=2, miss=0, fail=0%, node=8>
[miss msg]
<count=3, miss=1, fail=33%, node=16>
[from=16, time=9377, maxtime=9377]
```

Where

- “count” is the number of attempts the Master node polls the Slave nodes.
- “miss” is the cumulative number Master not getting return packets from Slave nodes
- “fail” is the amount of misses registered at the Master in percentage
- “node” is the last byte of the PHYid of the slave node being polled.

- “from=11, time=6623, maxtime=6623” denotes the time taken to & fro from Master to Node 11 is 6623 msec. while “maxtime” is the maximum time captured thus far.

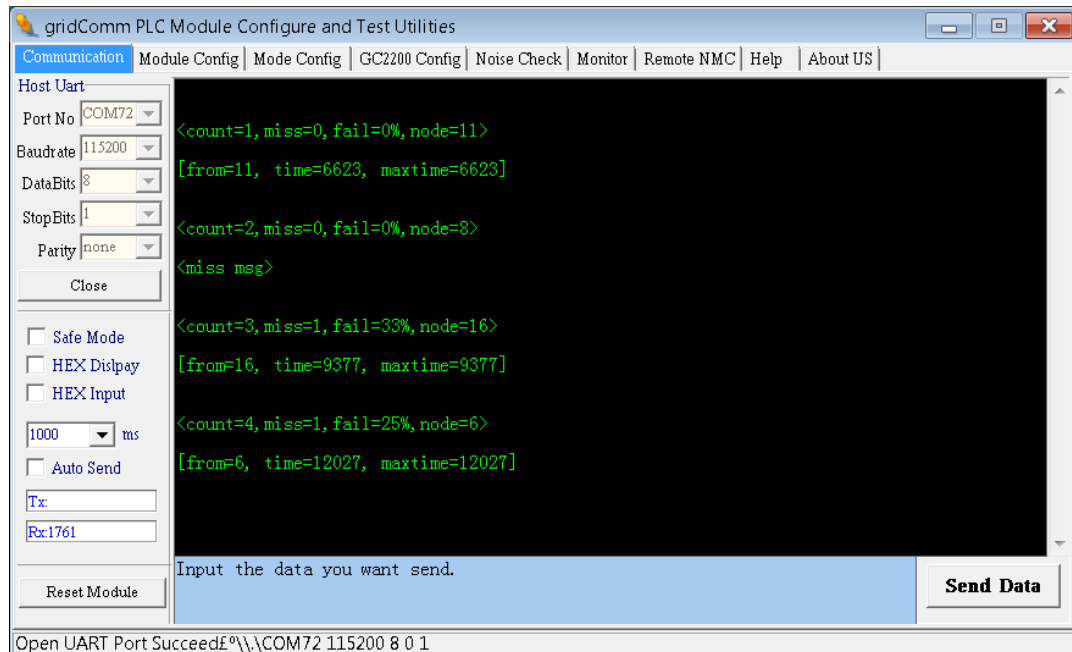


Figure 13 – Real-Time Polling Results

Figure 14 shows the polling results success rate in percentage under “Monitor” tab.

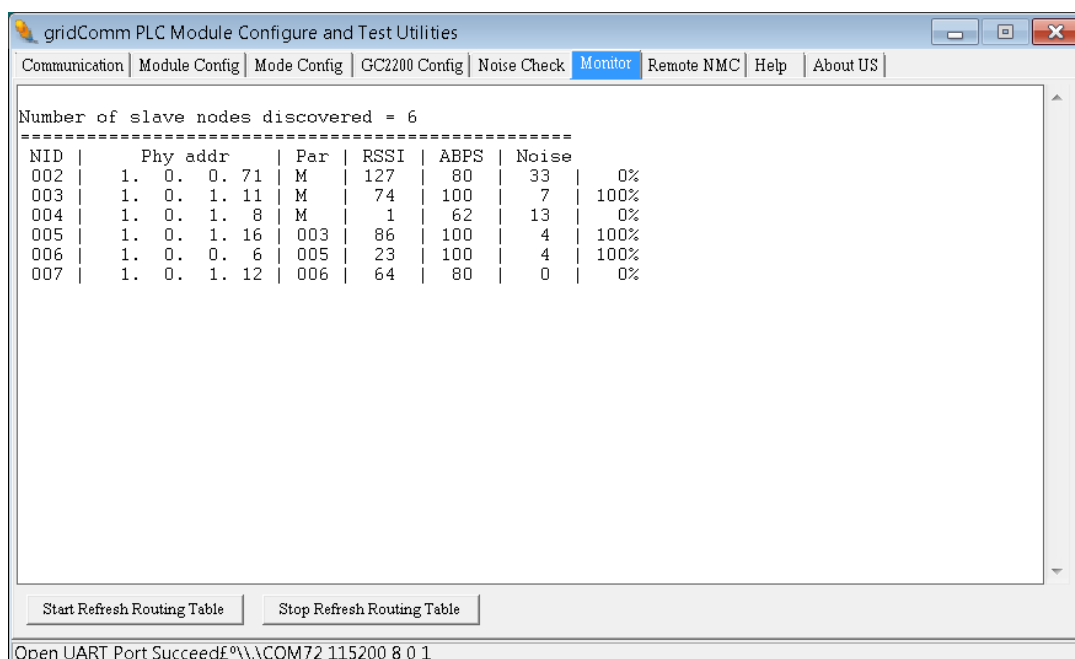


Figure 14 – Routing Table Display With Polling Success Percentage

3. Operation Modes

The GC8802 has four operation modes, namely Simple Broadcast, Point-to-Point, Auto-Routing, and Broadcast Routing. The different operation modes are enabled by configuring the settings via the “Mode Config” tab. GC8802 is also pre-programmed with a unique PHYid starting from 002.000.000.000 to 002.255.255.255. It can support a total of 16,777,216 unique PHYid addresses.

In Simple Broadcast, Point-to-Point and Broadcast routing modes, they are protocol transparent in the sense that serial data is sent verbatim between transmitter and receiver without a need for adding addressing. In Auto-Routing mode, the transmitting device needs to know the address of the receiver and needs to append this address to the data being sent.

4. gridComm GC-Net Simple Broadcast Communications

This is the simplest form of PLC communications whereby any PLC node will transmit data packets on the power line in a single hop. The transmitting PLC node will not supply a destination node address: the data packet is broadcast from the transmitting node, and any PLC node within receiving range will receive the packet from the power lines and send this data out its UART.

As there is no addressing at the networking layer, a data acknowledgement scheme is not implemented, and the transmitting PLC node will not know if the data packet has been successfully received by the intended PLC node. It will be the responsibility of the receiving device connected to the UART to authenticate this data: for example, to check if the packet is addressed to it. Also, a time-out mechanism may need to be implemented at the transmitting device to re-transmit data if required. For example, if the concentrator, which is connected to the Host PLC node, does not receive a reply from the intended terminal device after a certain time has elapsed, it should resend the data.

Figure 15 shows a typical broadcast network in a Star configuration.

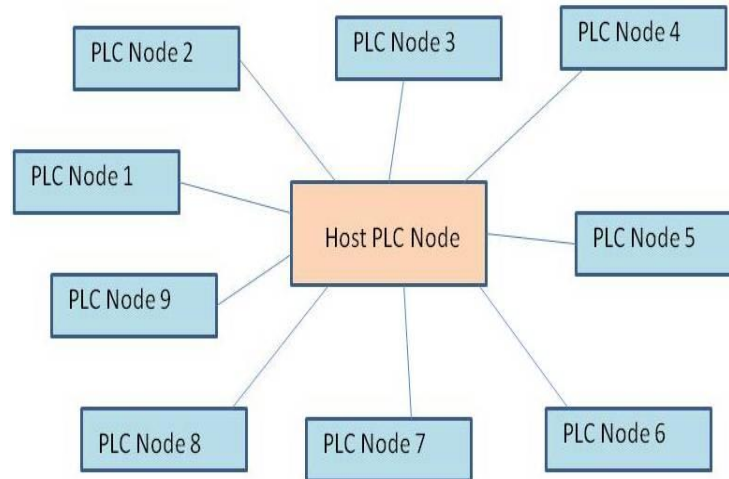


Figure 15 – Star-shaped Simple Broadcast Communication System

4.1 Demo & Evaluation of Simple Broadcast Communications

To evaluate Simple Broadcast mode, the user may use multiple GC8802s, each connected to a PC via gridComm PLCM_Uilities GUI. Follow the steps below:

- Configure the appropriate UART settings on both the Host UART and the Module UART as in “Host UART” and “Module UART Configuration” section in page 6 and page 8.
- Configure the channel frequencies under “GC2200 Config” in page 13 ensuring that all the PLC nodes (GC8802) share the same group of frequencies. ***Note that communications between any two PLC nodes may only happen over the same set of channel frequencies.***
- Set the appropriate “Output Power” as recommended.
- Go to “Mode Config” and set to “Broadcast Mode” under Operaton Mode Configuration as in “Operation Mode Configuration” section in page 10.
- Once the configurations are done, you may input any data in the bottom green window under the “Communication” tab. The data can be in character (default) or HEX form (check HEX Display and HEX Input). Enter a message in the green box and click “Send Data”. The message will be received by all the other devices within range and sent through their UARTs to be displayed on the gridComm PLCM_Uilities GUIs.
- The maximum standard data byte length per data packet is 72 bytes. However, it is highly recommended to use smaller data packets if possible, because longer data packets may have a higher chance of “packet loss” during transmission. When sending long data packets exceeding 72 bytes (up to 512 bytes), such as in ModBus, the device firmware will automatically break the long packet into multiple packets of up to 72

bytes without user intervention. These packets will then be reassembled to form the original data packet at the receiving PLC node.

5. gridComm GC-Net Point-to-Point Communications

This mode provides a more reliable data communications path between two points over power-line as in Figure 16. In this set up, there is no need to configure master or slave unlike in the Routing modes. Communications are transparent, and can be initiated by either end of the terminal devices to which the PLC nodes are connected once the serial communication settings are configured. However, the pairing PLC nodes in communications must share the same Connection ID address, because a Data Received acknowledgement scheme checks against the Connection ID address, and is implemented to ensure that the intended data packet received does not come from other irrelevant PLC nodes in the vicinity. ***Care should also be taken to avoid data collisions that are caused by other PLC nodes in the vicinity communicating on the same power lines network over the same set of frequencies. Data collisions may be prevented by assigning the paired PLC nodes with a unique set of carrier frequencies different from other PLC nodes in the vicinity.***

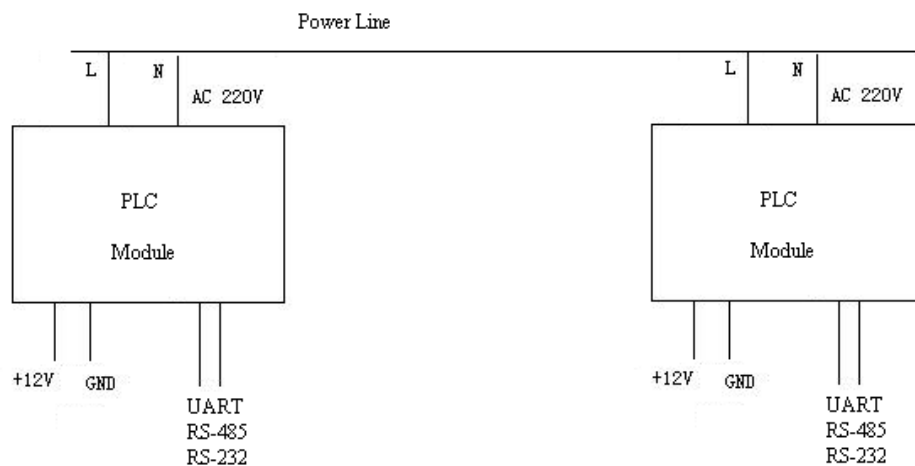


Figure 16 – Point-to-Point Communication System

5.1 Demo & Evaluation of Point-to-Point Communications

- To demo and evaluate the GC8802 with Point-to-Point communications, two instances of the gridComm PLCM_Uilities GUI are required in order to observe the two PLC nodes in communication.

- b) Ensure the pairing PLC devices under test are configured with the same Connection ID for Point-to-Point mode as per “Connection ID” section in page 12.
- c) Go to “Mode Config” and set to “Point-to-Point” under Operaton Mode
- d) In Figure 17, once the basic configurations are set as in “Demo & Evaluation of Simple Broadcast Communications” section in page 23 from 4.1.a to 4.1.c, you may input any data in the bottom green window under the “Communication” tab. The data can be in character (default) or HEX form (check HEX Display and HEX Input). Enter a message in the green box. The message will be sent to the other device as shown in the other GUI after clicking “Send Data”. The maximum standard data byte length per data packet is 72 bytes. However, it is highly recommended to use smaller data packets if possible, because longer data packets may have a higher chance of “packet loss” during transmission. When sending long data packets exceeding 72 bytes (up to 512 bytes), such as in ModBus, the device firmware will automatically break the long packet into multiple packets of up to 72 bytes without user intervention. These packets will then be reassembled to form the original data packet at the receiving PLC node.

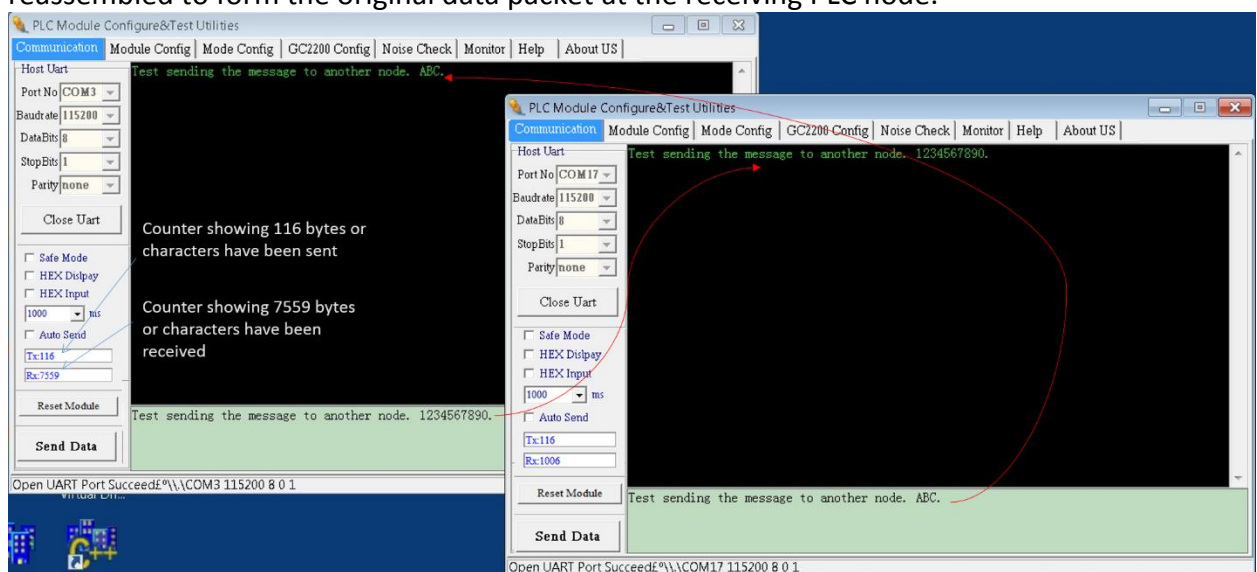


Figure 17 – PLC Device Point-to-Point Communications Demo

6. gridComm GC-Net Auto-Routing Network Communications

While Point-to-Point communications is easy to implement, most PLC systems are installed and deployed in more complex network configurations today. This is especially true when deployments require tens or hundreds of PLC nodes. Due to varying power line conditions (eg. variations in attenuations, noise, distance and load impedance etc.), a smart Auto-Routing Network system, which constantly searches for optimal routes and automatically reconfigures itself to enable the master node to maintain communications with all its slave nodes is needed.

gridComm's GC-NET Auto-Routing and Adaptive Routing Software enables users to effectively and dynamically set up this network system.

Figure 18, is an example of a Star-shaped PLC network system with five devices on the same power line. When the power line conditions are ideal for communications, the Host PLC Module (or master node) may communicate with all other slave devices (nodes) directly. However, if power line conditions deteriorate between the Host PLC Module and PLC Module 3 and they cannot communicate directly, the Host PLC Module may still maintain communication with PLC Module 3 if data packets are routed through PLC Module 1, which acts as a repeater (also known as a router, or a relay). gridComm's GC-Net Auto-Routing software enables the setup of such PLC networks.

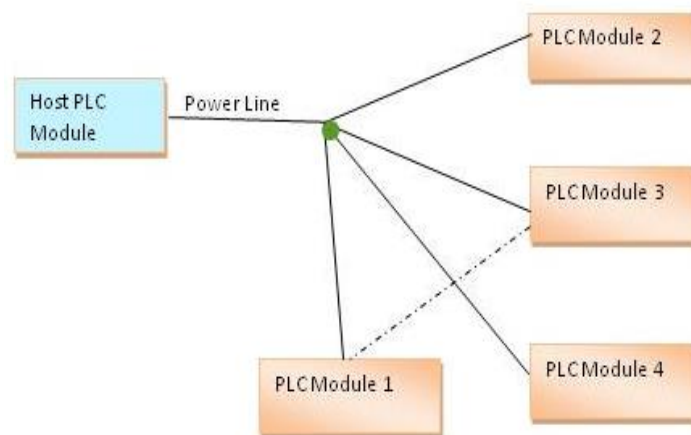


Figure 18 – Star-shaped Communication System with a back-up route

A more general example of such a network systems, is in the form of a “Tree” structure configuration, as in Figure 19. Apart from providing back-up routing over varying power line conditions, the “Tree” structure extends the potential distance covered between the Host PLC Module (or Master node) and PLC Modules (Slave nodes). The routers or repeaters are arranged in different tiers or layers with several communication hops between Master and its most distant Slave in the network. This is especially true for large complicated network systems. gridComm GC-Net Auto-Routing software can dynamically reconfigure itself, and perform re-routing of data paths should there be changes in the network due to an increase or decrease in PLC devices.

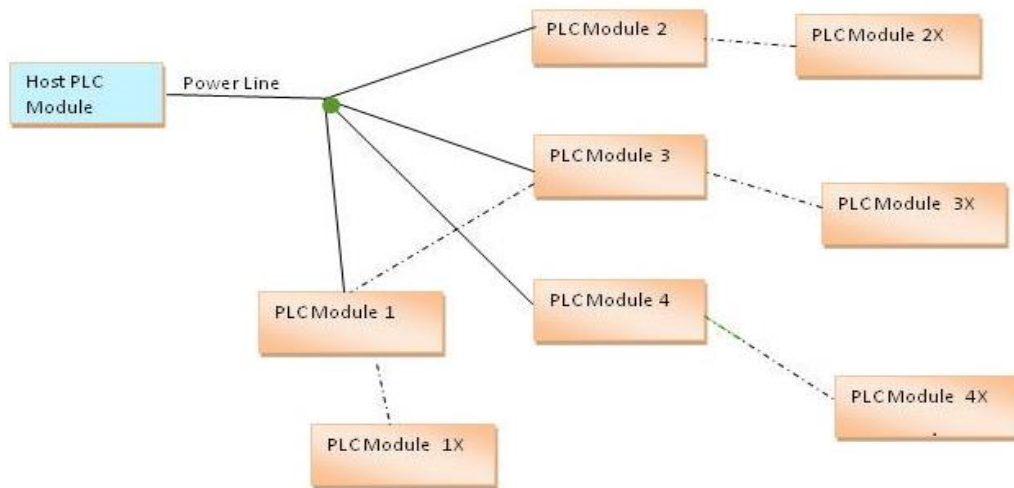


Figure 19 – "Tree" Structure Network

7. gridComm GC-Net Auto-Routing Software

7.1 Master Node Driven Communication Model

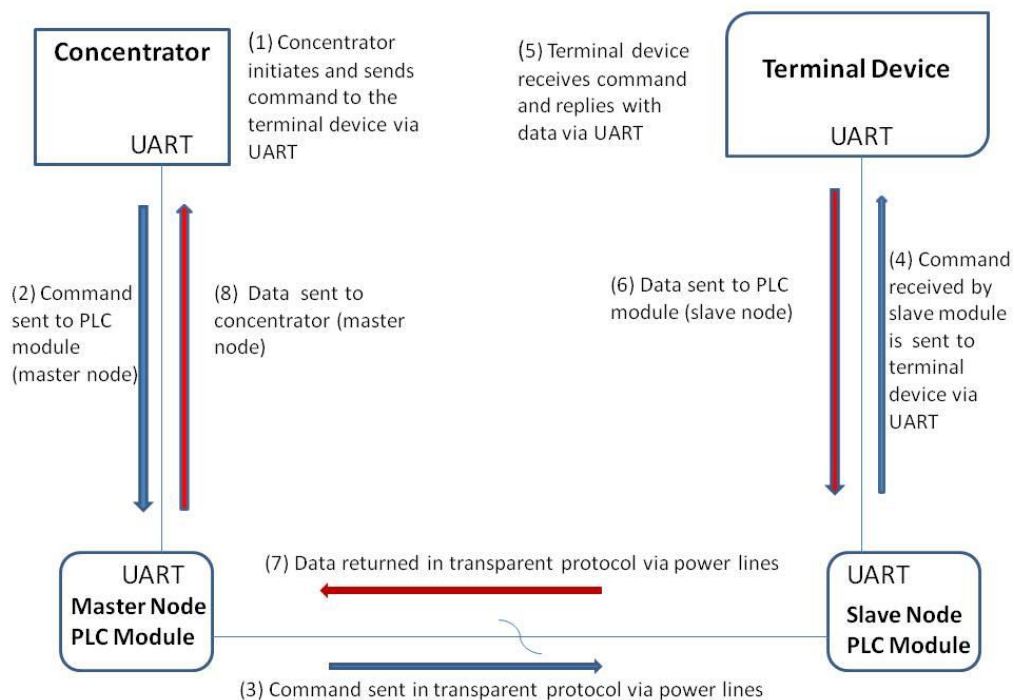


Figure 20 – Operations of a Master Driven Communication Model

[[AG1]

For most applications such as Street Lighting Control and AML, communications are initiated by the Master node. The Master node controls most of the communications in the network. ***This is how gridComm GC-Net software works, which is a Master-driven communication model based on a known destination address (PHYid) in auto-routing network mode.*** Slave nodes may, but should rarely initiate communications with the Master. Also, a Slave node cannot communicate with another Slave node directly.

When the concentrator sends a command with a destination address of the terminal device, the Master node which is attached to the concentrator will look up the route to the Slave PLC node that is attached to the terminal device and send the command over that route. After the destination Slave node receives the command, it will send the command via the UART to the terminal device. The terminal device responds by replying through the UART to the Slave node it is attached to^[S2]. The Slave node will then send it via PLC back to the Master node, which is then sent through the UART to the concentrator. Figure 20 depicts the operations of Master-driven communication model.

7.2 Operations- Auto-Discovery Phase

When a network of PLC nodes with Auto-routing is installed and powered up, the first thing the Master node will do is to search for all the Slave nodes within the network based on the gridComm GC-Net algorithm. It does so by searching the best routes to the Slave nodes based on the computation of a set of parameters such as noise, signal strength, and others. The Master node then assigns the Slave nodes into different tiers so that a routing path to each Slave node is created. The Master node will register those Slave nodes directly contactable with the master node as tier-1 Slave nodes. Slave nodes that are directly contactable through the tier-1 Slave nodes, will be assigned as tier-2 slave nodes, and so on.

The Master node will record and constantly update the routing paths for all the Slave nodes discovered. The Slave nodes will only record the routing path leading back to the Master node. The process of setting up the routing table during the discovery phase might take several minutes^[S3] depending on network complexity: power line conditions, size of network, and the number of hops in the network. When the Master node wants to communicate with a particular Slave node, it does so based on the routing path developed in the routing table for that node.

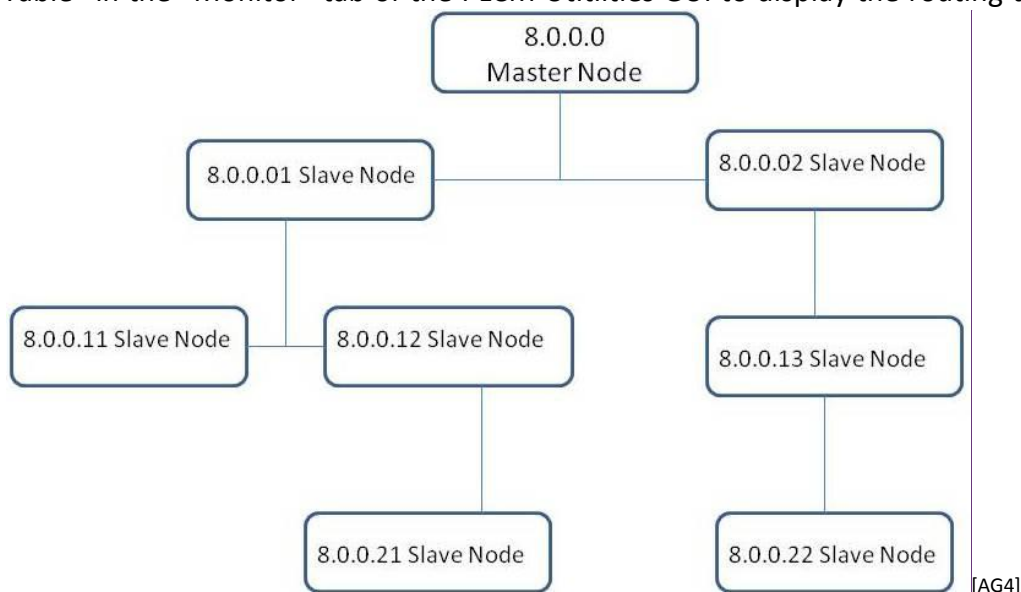
7.3 Demo and Evaluation of Auto-Discovery Phase

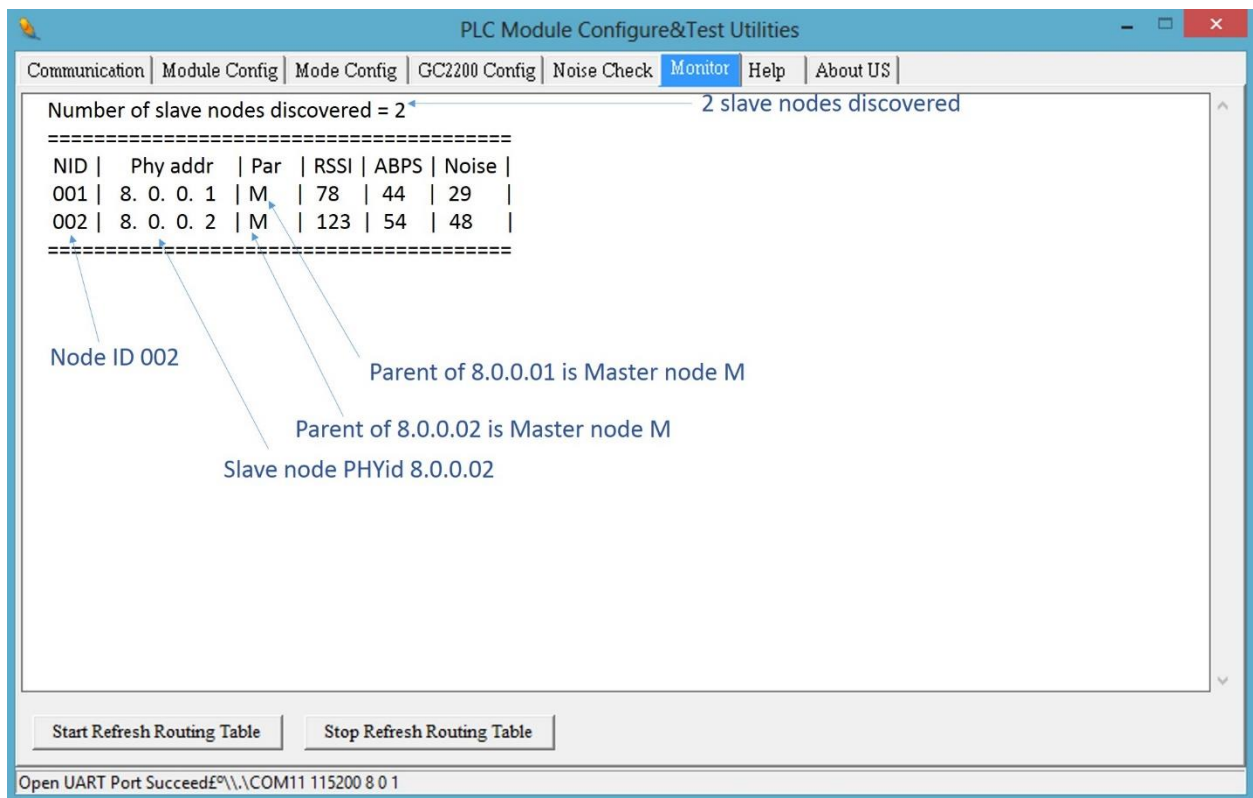
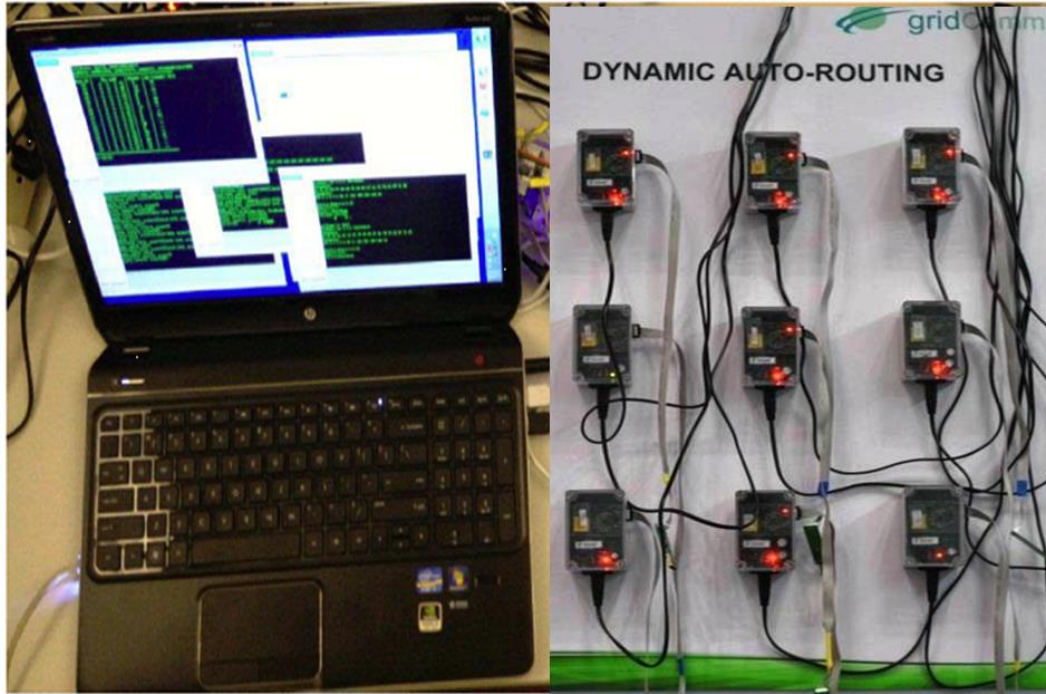
To view the building of the routing path network in Auto-Routing mode, a network of PLC devices (eg. GC8802) will need to be set up. Follow the steps below to set up the network.

- a) Perform the basic configurations as described in “Demo & Evaluation of Simple Broadcast Communications” section in page 23 from 4.1.a to 4.1.c.

- b) Identify which PLC node (eg. GC8802) is to be the Master node. Go to “Mode Config” tab and set “Master”. **Note that there can only be one Master node in a network. The maximum number of Slave nodes controlled by one Master node is 240. For larger size of network exceeding 240 PLC nodes, multiple Master nodes would need to be installed with each Master node controlled by a commanding node. For more details, please see “Network Size” section in page 37.**
- c) Set the rest of the PLC nodes in the network as Slave nodes. Point the Slave nodes to recognize the Master node by entering the PHYid of the Master node under “Assign Master Node PHYid in Network”. Perform “Write Into Module” and remember to reset the device after that.
- d) Set the Operation Mode to “Auto-Routing”
- e) Go to the “Monitor” tab of the PLCM_Utility GUI and click on the box, “Start Refresh Routing Table”. Once clicked, the routing table information will be displayed and will be updated dynamically as changes to the network are detected, e.g. upon addition of new nodes or removal of existing nodes. To disable printing of the routing table, click on the “Stop Refresh Routing Table” box or reboot the device. **Note that routing table display function is only for the Master node (eg. GC9200 or GC8101) and not the Slave nodes (eg. GC8802). Connecting the GUI to the Slave node and enabling “Routing Table” will have no effect.**
- f) The number of Slave nodes discovered in the network will be constantly updated and displayed above the table.

Figure 21 shows a series of diagrams with an example of how the routing table is developed for a tree structure of one Master node and seven Slave nodes. Click the “Start Refresh Routing Table” in the “Monitor” tab of the PLCM Utilities GUI to display the routing table information.





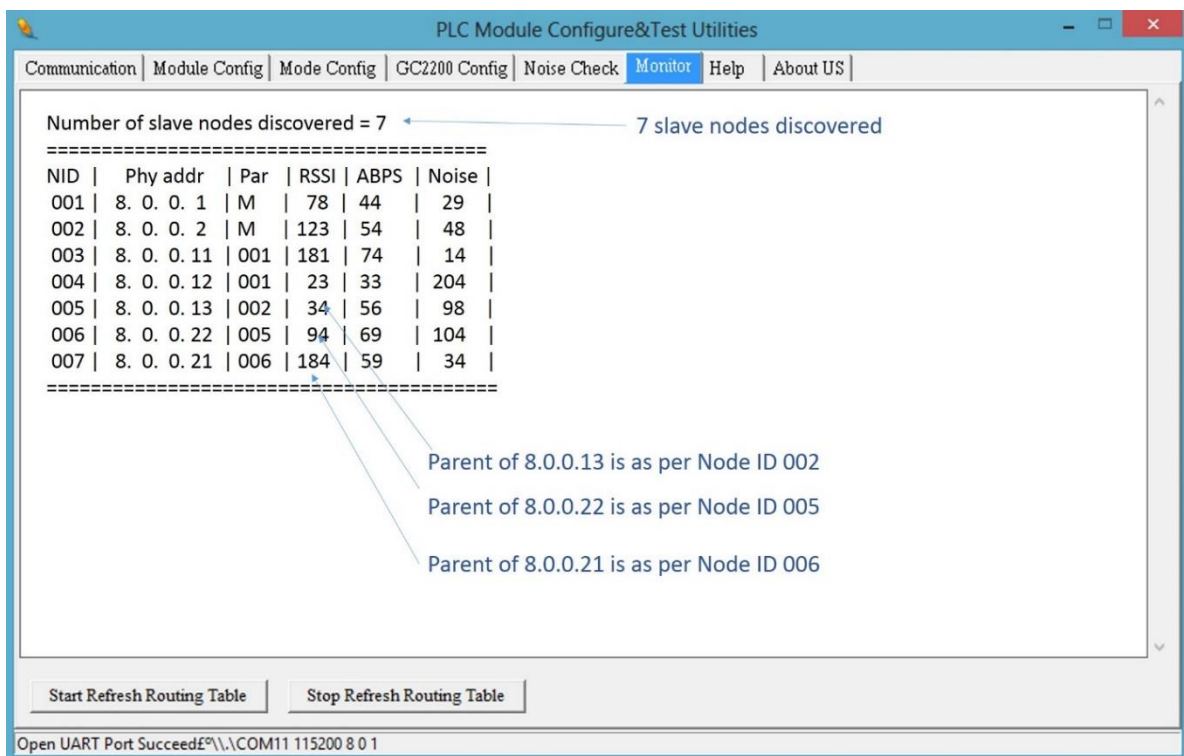
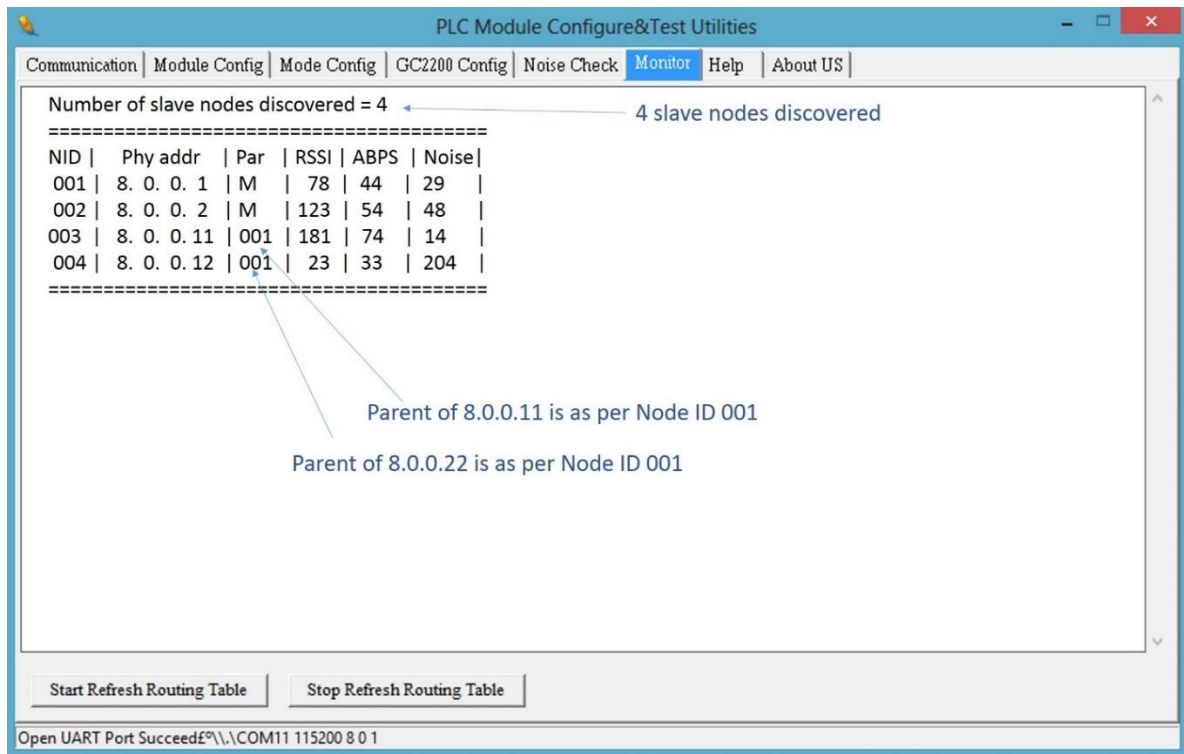
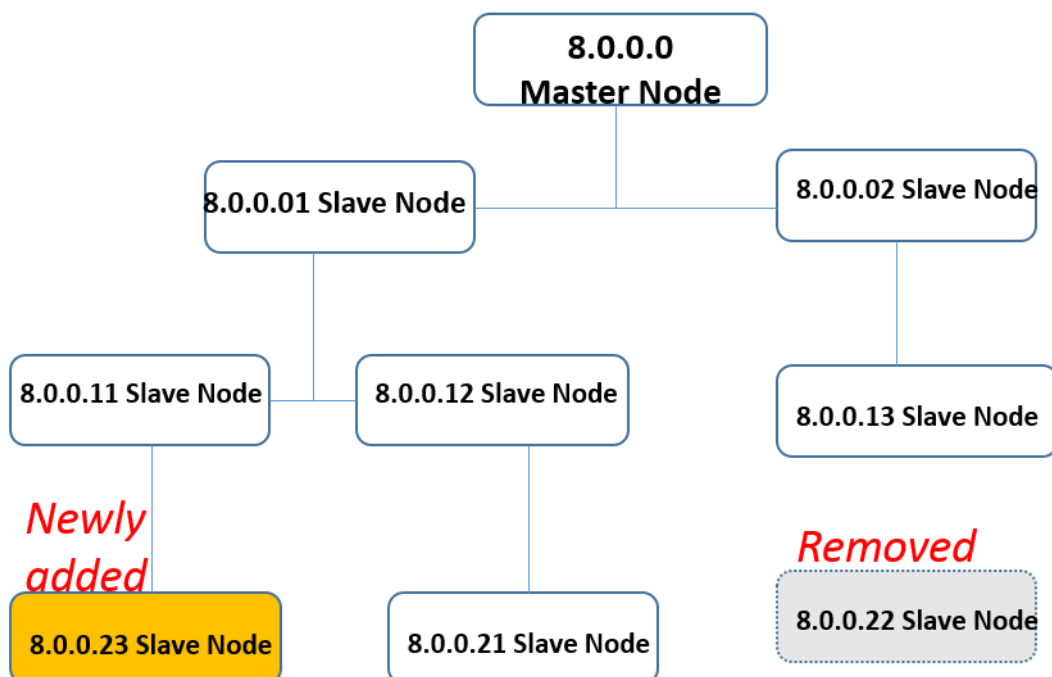


Figure 21 – Routing Table Developed for a Network of PLC Nodes

From the diagrams above, a tree structure with assignments of parent and child nodes is set up after the Master node has managed to register all the Slave nodes. For example, 8.0.0.21 registers 8.0.0.22 as parent, while 8.0.0.22 registers 8.0.0.13 as parent, 8.0.0.13 registers 8.0.0.02 as parent and finally 8.0.0.02 registers 8.0.0.0 (master node) as parent. When Master node 8.0.0.0 wants to send a command to 8.0.0.21, it will know the route via 8.0.0.02, 8.0.0.13 and 8.0.0.22 (routing path: 8.0.0.21 - 8.0.0.22 - 8.0.0.13 - 8.0.0.02 - 8.0.0.0).

7.4 Operations- Auto-Recovery Phase

When a Slave node is removed from or added into the network during operations, the Master node must discover the changes dynamically and rebuild its routing table automatically. Figure 22 shows a new Slave node PHYid 8.0.0.23 (slave node address) being added while Slave node with PHYid 8.0.0.22 is being removed from the network resulting in the rebuilding of the routing table.



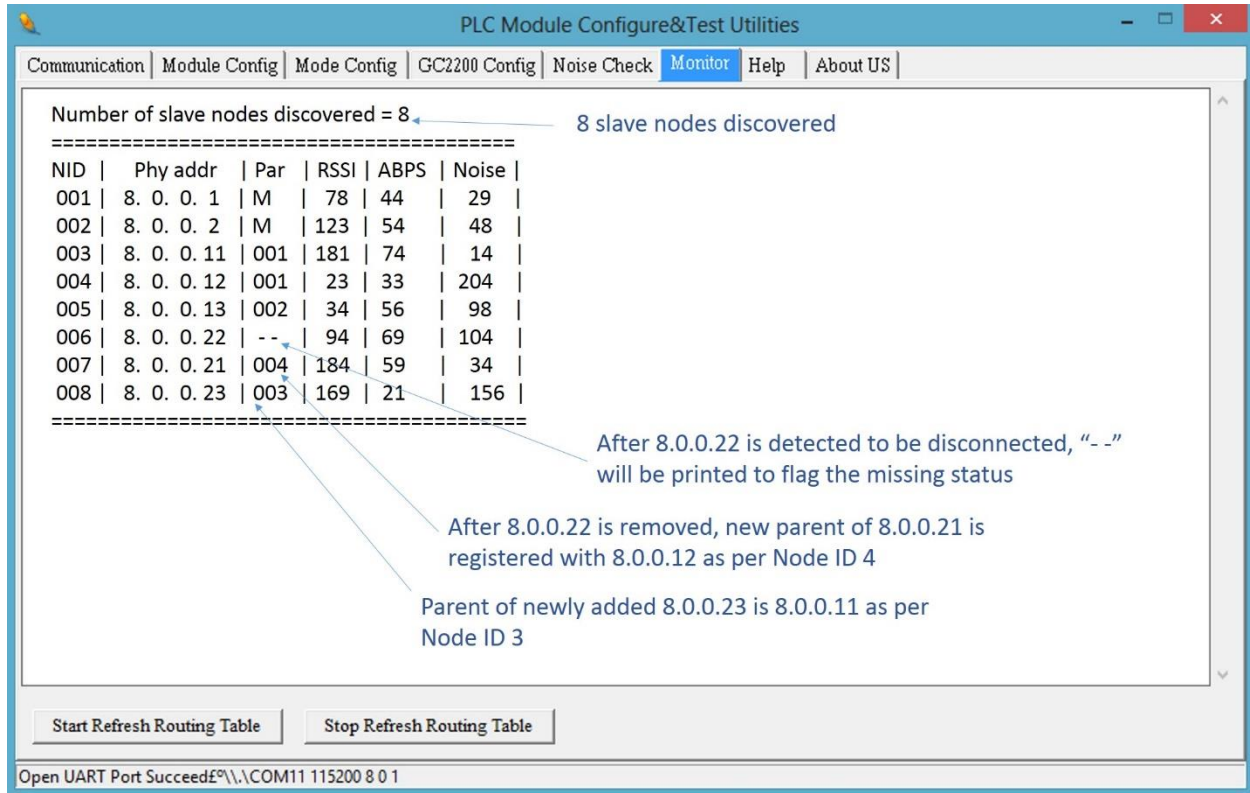


Figure 22 – Rebuilding of Routing Path Due to Newly Added and Removed Slave Nodes

When 8.0.0.23 is added into the network, it finds 8.0.0.11 as parent and forms a routing path to 8.0.0.0 (Master) via 8.0.0.01 and 8.0.0.11 (routing path 8.0.0.23 - 8.0.0.11 - 8.0.0.01 - 8.0.0.0). When 8.0.0.22 is removed, 8.0.0.21 no longer uses the previous routing path through 8.0.0.21. Insteads 8.0.0.21 forms a route through 8.0.0.12 as its parent to form a new routing path 8.0.0.21 - 8.0.0.12 - 8.0.0.01 - 8.0.0.0. As soon as 8.0.0.22 is being detected as removed from the network, its parent node will be labeled with double dashes "--" to denote the missing status. Again, it might take a few minutes to update the routing table in the Auto-Recovery phase when nodes are being added or removed from the network.

7.5 What if Some PLC Nodes are not discoverable?

It is possible that some PLC nodes in the network are undiscoverable for various reasons such as bad power line conditions, being on a different phase, being too distant etc. When setting up a network, it is a good idea to know in advance the total number and the identity (PHYid) of nodes being deployed. This potential list of nodes may be compared with the actual Slave node PHYids displayed on the routing table of the gridComm PLCM Utilities GUI to know exactly which ones are undiscovered.

If running the PLCM Utilities GUI on the Master node in operation is inconvenient, there is another way to detect if the network is fully set up. Enter the correct number of “Expected Number of Slave Nodes” in the “Module Config” tab of the PLCM Utilities GUI and perform a “Write Into Module”. This figure will then be stored in the flash memory and stay there even after the power down. When a network is initially powered up, all GC8802 devices including the Master node will flash once every 10 seconds during the discovery phase. When any Slave node is registered with the Master node, it will start to blink once every 0.2 second incessantly. As soon as the total number of Slave nodes discovered by the Master corresponds with the number of “Expected Number of Slave Nodes”, the RUN LED on the Master will blink in quick succession at 0.4 seconds interval.

If the number of Slave nodes contactable by the Master drops below the expected number, the Master will revert to blinking once every 10 seconds. (The contactable Slave nodes will continue to blink every 0.2 second). Checking the routing table for double dashes “_ _” in the Parent column will reveal which Slave node which has been disconnected from the network.

If new Slave nodes are added to the network with the total number exceeding the “Expected Number of Slave Nodes”, the RUN LED will continue to blink at 0.4 sec. Note again that network changes could take several minutes to be detected by the Master especially in a more complex network.

7.6 Semi-Transparent Protocol and Mapping of Terminal Device Address

In Auto-Routing mode, a PHYid needs to be added to every packet sent from the Master node. A mapping table may be required at the host controller (or concentrator) connected to the Master PLC node to translate the destination terminal device address to the PHYid of the Slave node attached to it. The 4-byte PHYid is transmitted just before the data packet itself.

When the designated Slave node receives the data packet, it will send the data packet without the PHYid over the UART to the terminal device.

Unlike the host controller, when the terminal device responds, ***it must not add a PHYid to the response data packet.*** The terminal device sends the data verbatim to the Slave node via the UART. The Slave node will route the packet to the Master node and hence to the host controller or concentrator.

Thus, for the Slave node, the protocol is transparent, unlike the Master node.

The auto-routing software is implemented in the network layer and is independent of the output power, redundancy and modulation settings. The network layer also performs segmentation and re-assembly of packets. This network layer may be customized to application

needs (may incur NRE, so please contact gridComm). The addressing scheme implemented for gridComm GC-Net software is based on 32-bit addressing.

The maximum length of a data packet of the gridComm PLC transparent protocol is **72 bytes regardless of operation mode**. In cases where the transparent protocol sends data packets larger than 72 bytes (such as transporting Modbus protocol which could stretch up to 512 bytes in ASCII form), the gridComm GC-Net software application layer will automatically break them down into smaller chunks and then reassemble them into a single data packet when they are received at the destination node.

7.7 Demo and Evaluation of Command Send and Data Read Back in Auto-Routing Mode

To demonstrate “command send” and “data read back” between the Master node (depicting a concentrator) and a Slave node (depicting a terminal device eg. Smart Meter), two instances of the PLCM Utilities GUI (one for master node and the other for slave node) are needed. ***Note that the inputs (both the PHYid and data) needs to be in HEX format in Auto-Routing mode as per Figure 23.*** Perform the following steps:

- a) Go to the green window under “Communication” tab of the Master node and enter a pseudo command in HEX in the green window with the PHYid of the destination Slave node with PHYid as 8.0.0.23 in front of the data, eg. “08 00 00 23 54 65 73 74 20 6D 65 73 73 61 67 65...”.
- b) Click “Send Data” to send a command to 8.0.0.23 Slave node.
- c) “Text message” depicting the command appears on the PLCM_Utilities GUI of 8.0.0.23 Slave node.
- d) Place “Reply message” depicting data to read back in green window of the PLCM_Utilities GUI of 8.0.0.23 Slave node and click “Send Data”.
- e) “Reply message” is read at Master node PLCM_Utilities GUI.

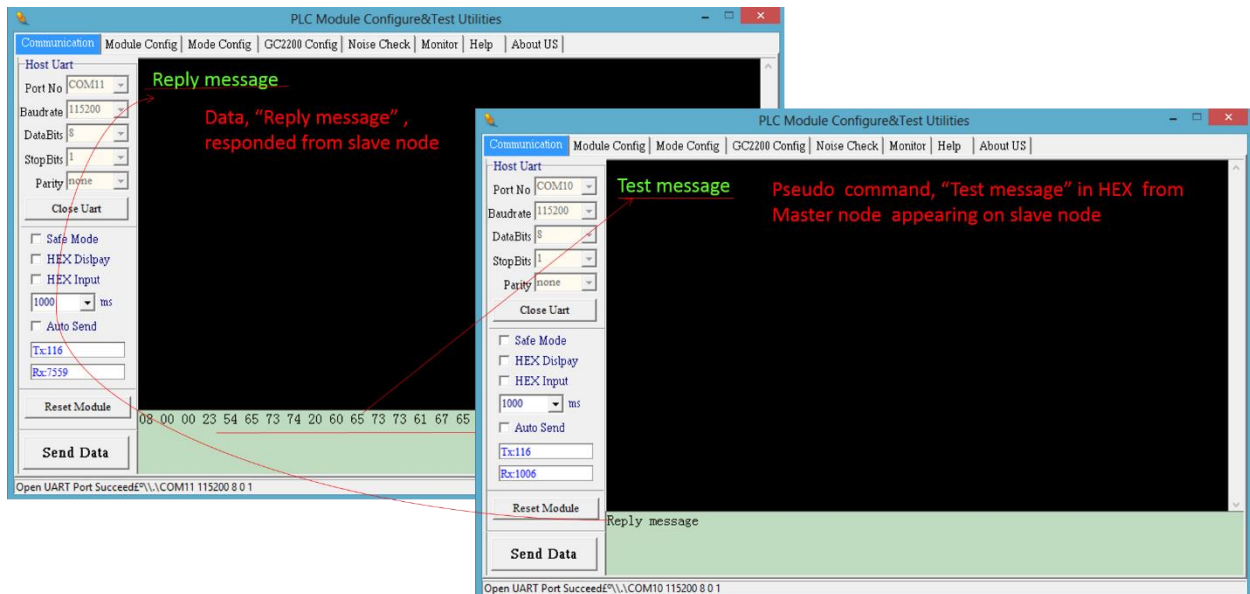


Figure 23 – A GUI Showing Data Transmission Between Master Node and Slave Node

7.8 Implementing a Send-Acknowledge (Send-Ack) Mechanism

To ensure the successful reception of the data packet by the terminal device, a Send-Ack mechanism may be implemented in the application layer of the host controller (or concentrator).

For example, when the host controller sends a data packet and it is received successfully by the terminal device, the terminal device may generate a “Received” signal back to the host controller as an acknowledgement. If the host controller did not receive the acknowledgment from the terminal device after a specified time-out, it may then assume that the data packet has not been received by the terminal device. The host controller may then retry sending the same data packet again to the terminal device. In GC-Net, when Send-Ack is enabled, a total of 5 retries is implemented.

As a general guideline, when Send-Ack is enabled, it is recommended to allow 3.5 seconds for the parent node to transmit a data packet one way to the immediate child node at the next tier. For example, if a network has three tiers of slave nodes under the master node, for the Master node to send a data packet to the third (bottom) tier of Slave nodes with Send-Ack enabled, it is best to cater $3.5 \times 3 = 10.5$ seconds of time-out.

7.9 Network Size

To avoid the network from becoming sluggish, gridComm Auto-Routing scheme limits a network to 240 Slave nodes to 1 Master node. When an application requires more than 240 Slave nodes, multiple Master nodes would be needed. For example, a network of 900 Slave nodes would require at least 4 Master nodes to support it. These Master nodes will then connect with a Commanding node (at the concentrator) to exchange data.

It is highly recommended that a smaller number of Slave nodes per Master node be used if possible, because the number of hops in the worst case may increase with a larger number of Slave nodes and this, in turn, will result in longer latency or even communications failure. Care should be taken to avoid data collisions that are caused by other PLC nodes of a different network in the vicinity communicating on the same power lines. Data collisions may be prevented by setting the network of PLC nodes to use a unique set of carrier frequencies that are different from other networks of PLC nodes in the vicinity. GC2200 possesses the flexibility to freely configure the number of channels with different carrier frequencies, which is a very useful feature to prevent undesired interference from other networks of PLC nodes.

8. GC-Net Broadcast Routing Communications

Broadcast Routing is developed to cater to the needs for users who want to run a transparent protocol with network routing – in other words, enabling communications over power line without knowing destination PLC node addresses (or slave node PHYids).

This is convenient since the PHYid is not sent and the protocol is transparent. All that is required is to set up the UART on the PLC node. The network software will deliver data packets sent from the Master node to all Slave nodes in the network tree, and data packets sent from any Slave node back to the Master node.

During initial start-up of Broadcast Routing mode, the PLC system will first develop routing paths for the network tree as in the Auto-Routing mode. Broadcast Routing will fully function only after the routing paths have been developed and this could take several minutes depending on network complexity. Again, a blinking RUN LED every 0.4 seconds on the Master device will indicate the readiness of the network: that is, the number of slave nodes detected equals or exceeds the total Expected Number of Slave Nodes entered into the Master node.

When the network is ready, the concentrator will send data packets to a terminal device as if it were sending it through a simple data communications line without a need for PLC addressing or protocol handling.

Again, it is the user's responsibility to define and set the time-out to implement a Send-Ack scheme. As a general guideline for time-out, allow 3.5 seconds for a send from a parent node to its immediate child node on the next tier. For example, if a network has three tiers of Slave nodes, for the Master node to send a data packet to the third (bottom) tier of Slave nodes, it would require $3.5 \times 3 = 10.5$ seconds of time-out.

In Broadcast Routing, there is an increase in network utilisation. Hence, Broadcast Routing is effective for use in smaller and less complex networks (e.g. 30 nodes with up to 4 tiers, or 100 nodes with up to 3 tiers with most of the nodes in the 2nd tier etc.). As in any form of power line communications, Broadcast Routing should not be used in time-critical situations due to latencies in scheduling.

8.3 Demo and Evaluation of Broadcast Routing Communications

To demo and evaluate Broadcast Routing Communications, a network of PLC devices (eg. GC8802) would need to be set up. Follow the steps below to set up the network.

- a) Perform the basic configurations as described in “Demo & Evaluation of Simple Broadcast Communications” section in page 23 from 4.1.a to 4.1.c.
- b) Identify which PLC node (eg. GC8802) is to be the Master node. Go to “Mode Config” tab and set “Master”. Note that there can only be one Master node in a network. The maximum number of Slave nodes controlled by one Master node is 240. For larger sizes of network exceeding 240 PLC nodes, multiple Master nodes would need to be installed. Each Master node would then be controlled by a commanding node. For more details, please see “Network Size” section in page 37.
- c) Set the rest of the PLC nodes in the network as Slave nodes. Point the Slave nodes to recognize the Master node by entering the PHYid of the master node under “Assign Master Node PHYid in Network”. Perform “Write Into Module” and remember to reset the device after that.
- d) Set the Operation Mode to “Broadcast-Routing”
- e) Go to the “Communication” tab of the PLCM_Uilities GUI and click “Start Refresh Routing Table”. Once clicked, the routing table information will be displayed and will be updated dynamically as changes to the network are detected, e.g. upon addition of new nodes or removal of existing nodes. To disable printing of routing table, click the “Stop Refresh Routing Table” box or reboot the device. ***Note that routing table display function is only for the Master node (eg. GC9200 or GC8101) and not the Slave nodes (eg. GC8802). Connecting the GUI to the Slave node and enabling “Routing Table” will have no effect.***
- f) Go to the green window under “Communication” tab of the master node and enter HEX data in the green window, eg. “54 65 73 74 20 6D 65 73 73 61 67 65...”.
- g) Hit “Send Data” to broadcast the data packet.
- h) The “Text message” depicting the command will appear on the PLCM_Uilities GUI of any slave node. ***In applications, it is likely that all the terminal devices will interpret the command data packet and only the terminal device which the packet is addressed to will respond to the command.***
- i) Place “Reply message” depicting a response to be sent in the green window of the PLCM_Uilities GUI of any Slave node and hit “Send Data”.
- j) The response finds its way to the Master node and “Reply message” is received and displayed at the Master node PLCM_Uilities GUI.

9. Network Management Commands

In order to differentiate a PLC data transmission from a Network Management command, a certain escape sequence needs to be sent.

The format for a Network Management command is:

0x1b 0x67 0x72 0x1d 0xc0 0x6d 0x6d 0x3a FC1 FC2 Len Seq Cmd Obj Sub Values . . .

The format for a response is:

0x1b 0x67 0x72 0x1d 0xc0 0x6d 0x6d 0x3a FC1 FC2 Len Seq Status Values . . .

Seq is a sequence number that is used for matching responses to commands. This is required for robustness especially on a UART which is asynchronous, full-duplex. Seq will be a wrap-around unsigned 8-bit counter (that is, 0 - 255). The Fletcher's checksum FC1 and FC2 are calculated for all bytes following the checksum bytes. Len is the length of all bytes following the checksum bytes (thus including the length byte itself).

Fletcher's checksum is calculated as shown in the 'C' code below:

```
uint8_t fc1=0, fc2=0;
for (i=0; i<size; i++)
{
    fc1 = (fc1 + buf[i]) % 255;
    fc2 = (fc2 + fc1) % 255;
}
```

Where `buf[]` contains `size` number of bytes of data to be checksummed.

All multi-byte values are big-endian, that is, Most significant byte stored first.

Command codes:

Command code	Operation
0	Get
1	Set

Object-SubObject table

Object	Sub-object	Name	Size (bytes)	Remarks
0 (System)	0	PHY ID	4	Get-only

	1	Product ID	2	Get-only
	2	FW version	2	Get-only
	3	Reset System	0	Set-only, causes a reboot
	4	Reboot counter	1	
	5	Write to Config Flash	2	Get returns a 16-bit sequence number Set, with sequence number. If sequence number has not changed, flash is written (this ensures atomicity of changes)
1 (Run modes)	0	Operation Mode*	1	
	1	Lock Mode*	1	
	2	Test Mode*	1	
2 (Local Comms)	0	UART Baud rate*	4	
	1	UART Baud frame specs*	4	
5 (PLC Channels)	0	Channel Frequency*	18	
	1	Channel modulation*	1	
	2	Channel Enable*	3	
	3	Transmit power*	2	
8 (Point-to-point)	0	Connection ID*	1	
9 (AutoRouting Master)	0	Expected Number of Slaves*	1	Master Only

	1	Current Number of Registered Slaves	1	Master Only, Get-only
	2	Total Number of Unique Registrations since boot	1	Master Only, Get-only
	3	Slave details for given NetID: PHY ID, Parent ID, Node level, Alive, RSSI, Tx Channel	8	Master Only, Get-only
	4	NetID, and PHY ID of last Reply	5	Master Only, Get-only
	5	NetID, PHY ID, and RSSI of next Slave that is not Alive	6	Master Only, Get-only
10 (AutoRouting Slave)	0 – 7	Master ID List*	4	Slave Only
16 (Measurement)	0	Configured Channels Noise	54 (Get) 0 (Set)	Set to reset noise
	1	Temporarily write channel frequencies	18	Set-only, for use in measurement of noise. Should only be used in safe mode.
18 (Defaults)	0	Set default configuration 1	0	Set-only

* Objects that are written to config flash when using Write to Config Flash

Possible status codes returned:

0: OK

1: Bad Checksum

2: No Such Object

3: Cannot perform operation

4: Bad length

5: Operation Error

6: Write Error

Examples of Network Management commands sent through the UART:

To read the FW version of the Node, send:

```
0x1b 0x67 0x72 0x1d 0xc0 0x6d 0x6d 0x3a 0x08 0x1f 0x05 0x01 0x00 0x00 0x02
```

- where the Seq is 0x01, FC1 = 0x08, FC2 = 0x1f

A valid reply with OK status would be:

```
0x1b 0x67 0x72 0x1d 0xc0 0x6d 0x6d 0x3a 0x3e 0x56 0x05 0x01 0x00 0x01 0x37
```

- where the Seq is 0x01, FC1 = 0x3e, FC2 = 0x56, and the result is 0x0137 as the firmware version (version 1.55)

To reset the Node, send:

```
0x1b 0x67 0x72 0x1d 0xc0 0x6d 0x6d 0x3a 0x0e 0x33 0x05 0x05 0x01 0x00 0x03
```

- where the Seq is 0x05, FC1 = 0x0e, FC2 = 0x33

A valid reply with OK status would be:

```
0x1b 0x67 0x72 0x1d 0xc0 0x6d 0x6d 0x3a 0x08 0x13 0x03 0x05 0x00
```

where the Seq is 0x05, FC1 = 0x08, FC2 = 0x13

10. GC-Net PLC Quick Reference

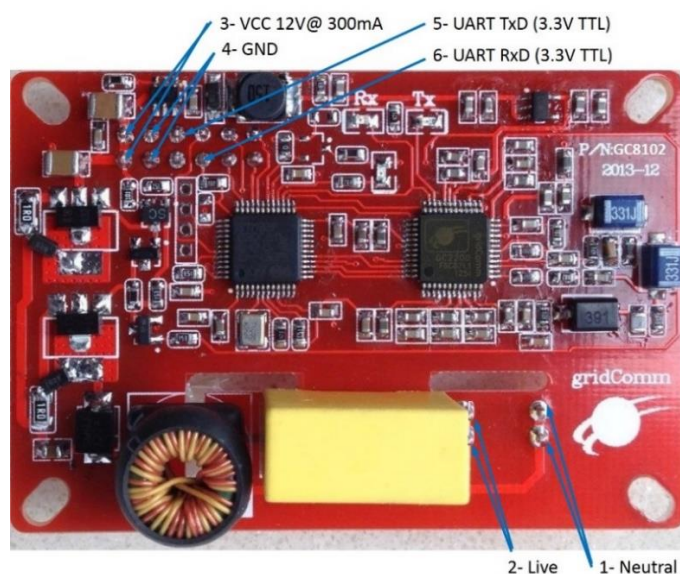
	Point to Point	Simple Broadcast	Auto-Routing	Broadcast Routing
Maximum Number of Tier Support	1 (two layer of nodes)		7 (8 layers of nodes)	
Maximum number of PLC nodes	2	Unlimited	240	
Communications mode	Connection ID	Peer-to-Peer	Master Driven, 1 Master to multiple Slaves	
Send/Ack Mechanism (Network Layer)	Built-in	NA	Built--In	Only On Return Path
Auto discovery and recovery of nodes	NA		Yes	
Auto Repeater	NA		Yes	
PhyID Agnostic	Yes	Yes	No	Yes

Module "Link" LED Blinks		Quick Blinks at 200ms/blink signal Ready for Operations		Master Blinks at 400ms indicates network is set up. Slave blinks at 200ms means registered with Parent
Maximum payload per data packet per transmission		42 bytes		
Maximum user data packet size with auto-scaling		512 bytes		
Latency per direction for upto 42 byte data packet with ECC ON and W/O ACK/SEND (Broadcast Routing only applies for return path, forward path is 0.7 sec per tier)	1 tier or 2 layers	NA	0.7 sec	0.7~1sec
	2 tiers or 3 layers	NA		1.4~ 2sec
	3 tiers or 4 layers	NA		2.1~ 3 sec
30% more Latency per direction for upto 42 byte data packet WITH ECC ON and ACK/SEND (Broadcast Routing only applies for return path, forward path is 0.7 sec per tier)	1 tier or 2 layers	0.7 sec per channel set	NA	0.7 ~ 5 sec
	2 tiers or 3 layers	NA		1.4~ 10sec
	3 tiers or 4 layers	NA		2.1~ 15 sec
Date rate at 1BPSK at PHY layer		1.22 Kbps		
Date rate at 3BPSK at PHY layer		3.66Kbps		
Date rate at 3QPSK at PHY layer		7.22Kbps		

Max. Attenuation Possible btwn 2 Nodes at 1BPSK (60dB= 1000 times signal reduction)		60 to 75dB	
Max. Attenuation Possible btwn 2 Nodes at 3BPSK (40dB= 100 times signal reduction)		40dB	
Max. Attenuation Possible btwn 2 Nodes at 3QPSK (20dB= 10 times signal reduction)		20dB	
Anti- Noise Capability		Effective against impulsive noise by switching frequencies	Effective against impulsive noise by switching frequencies and white-band noise by setting close range repeaters or alternate routing paths

11. Dimensions and Pins Descriptitons

The overall dimensions of the PLC module are 66mm L x 45mm W (see Figure 20). There is over-current, over-voltage and electrostatic protection on the PLC module.



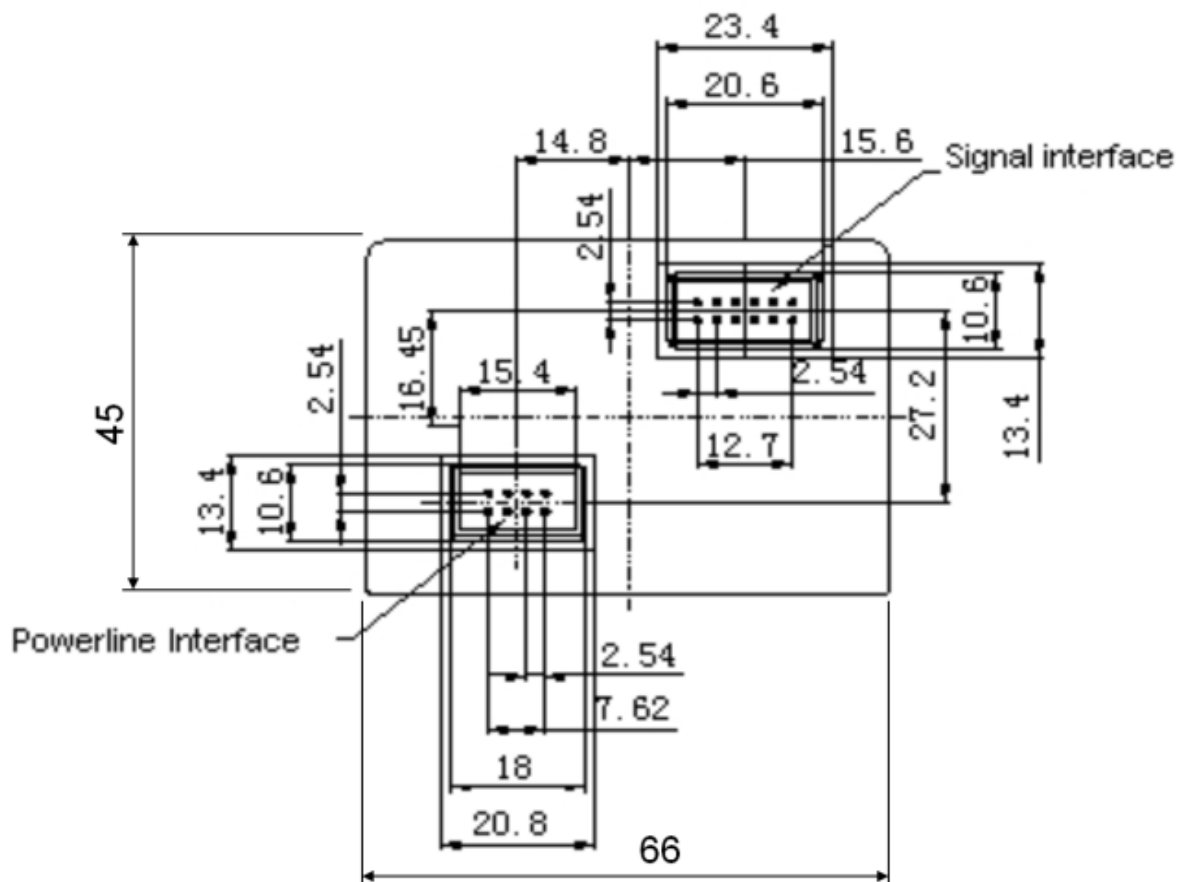
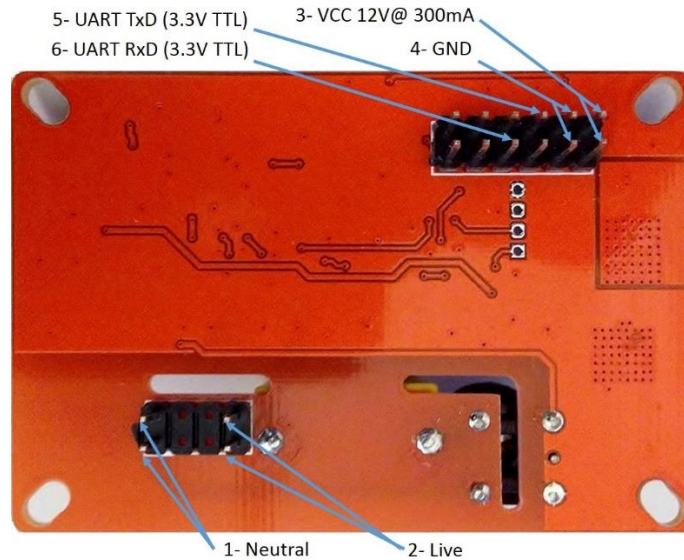


Figure 20 - PLC Module Dimensions and Pin Locations (Bottom View)

Pin No.	Name	Functionality
1	N	Power Line
2	L	Power Line
3	VCC	12V@300mA Power
4	GND	Ground
5	TxD	UART1 (3.3V TTL)
6	RxD	UART1 (3.3V TTL)

12. FAQ

Q1. How do I know if the PLC device is working properly?

Ans: During power up, the red Power LED on the GC8802 device will light up. The yellow Link will also light up showing that it is working properly. Turning off and on the power supply or resetting the device will display the message: “gridComm © 2013, Firmware ver. XXXXX (date)”, via PLCM_Utility.

Q2. If two PLC devices are not communicating with each other in Point-to-Point mode, what can be done?

Ans: These actions may be performed:

- Check that the PLC devices are working as in Q1.
- Check that the two PLC devices have the same Connection ID and frequency settings.
- Check that the PLC UART settings matches the device UART settings.
- Ensure that there are no other PLC devices in the vicinity transmitting simultaneously.
- Ensure that the PLC devices are on the same power line phase.

Q3. Why may two working PLC devices, even on the same phase, not communicate with each other?

Ans: Even if the two power points are on the same phase, communication may still fail due to the unpredictable nature of power line communications. These include: variable load impedances, variable attenuations, high noise levels, and phase distortions. For example,

attenuation varies from 2x to 500x (3-30db) in outlets of the same building and even in close proximity to each other.

Q4. How do you overcome the problem mentioned in Question (3)?

Ans: These steps may be performed:

1. Run the Noise test using the PLCM_Uilities GUI to detect the noise level across the default setting of the frequency spectrum of the PLC device. If the noise level is extremely high (say > 500) on certain channels, reconfigure those channels affected by high noise to other frequencies with lower noise. In general, higher frequencies (>300KHz) experience a lower noise level.
2. Use auto-routing to extend the potential reach of the network. By routing packets through intermediate, nearer nodes, communication may be made between nodes that are otherwise out of reach. Refer to “Auto-Routing Network Commumnications” in page 25 of the user guide.

Q5. When Auto Send is checked under the Communication tab of PLCM_Uilities GUI, why does the other PLC device not receive the continuous data strings input?

Ans: When using the Auto Send feature under the Communication tab of the PLCM_Uilities software, it is important to set the time interval to be sufficiently long. This is to allow sufficient time delay for the PC to respond to the signals coming from the PLC device via the UART-USB cable which is the bottleneck. If the time interval is too short for Auto Send, there is a high chance the PC will not capture the incoming data from the UART-USB cable before the next data string is transmitted. Since there is no display of the data strings on the PC GUI, the PLC device would look like as if it is unable to receive the data from the other PLC device. Setting the time to be > 2000ms should fix the problem.

Q6. Can some or all 18 channels be set to the same frequency?

Ans: Yes, there is no impact in setting the channels to the same frequency except that the PLC device is not taking advantage of using other frequencies, for example, for redundancy to increase robustness.

Q7. Can I turn on/off certain channels, or configure the Tx output power of the GC8802 PLC device?

Ans: Yes, these options are available in GC8802 under Point-to-Point mode.

Q8. How do I make use of the GC8802 PLC devices to communicate without the GUI software in an embedded system?

Ans: The GC8802 works in transparent protocol. For Point-to-Point mode, simply send the data over UART to the PLC device and the data will be sent verbatim to the receiving node. For auto-routing mode, the concentrator (or host) would need to send the PHYid (address of the Slave PLC node) immediately before the data proper over UART to the Master node. The Slave PLC node in auto-routing, however, takes the data without a PHYid.

Q9. Does the GC8802 device send the data packet to its attached terminal device automatically when it receives a data packet?

Ans: Yes, the data packet will be automatically sent from the GC8802 device to its attached terminal device via the UART port.

Q10. Can GC8802 PLC device be used in a 3-Phase system and be able to withstand 1000 VDC continuous isolation test?

Ans: Yes, the GC8802 PLC device can be used in a 3-Phase system. However, the default coupling capacitor rated at 0.47uF/275VAC would have to be replaced to withstand the higher voltage of 380 to 420V AC. GridComm provides customization service for use in a 3-Phase system. Please contact your GridComm sales representative.

Q11. Can there be more than one Master node on the same power line?

Ans: Yes it is possible but there will be a greater chance of data collision between nodes if the networks are in the same vicinity. This can be avoided by choosing a different set of frequencies for the different networks of nodes.

Q12. Can two Slave nodes under the control of a Master node be able to communicate between themselves without involving the Master node?

Ans: All communications need to be handled and initiated by the Master node. Slave nodes are not able to communicate between themselves.

Q13. What is the maximum number of Slave nodes in a network?

Ans: A network can only have one Master and up to 240 Slave nodes. Take note that a network system with a larger number of nodes might have more tiers and thus more latency in communications.

Q14. When the Host MCU receives the data from the GC8802 Master node, does the data need to be further processed? Does the Host MCU need to respond to the GC8802 Master node it is attached to?

Ans: The data received by the Host MCU is the actual data as it is a transparent protocol. The Host MCU does not need to respond to the GC8802 Master node.

Q15. What is the maximum number of tiers or repeaters in network routing?

Ans: Theoretically, the maximum number of tiers is 7. However, more tiers/repeaters will mean more delay in getting a response from Slave nodes. It is recommended not to have more than 5 tiers or repeaters in a network.

Q16. When two or more Slave nodes send data packets back to the Master node at the same time, will there be data collision and if so, how could data collision be prevented?

Ans: It is possible that when two or more slave nodes send data packets at the same time, data collision happens. When this happens, the terminal device devices should repeat sending of data packets at different timing intervals.

Q17. When performing Noise Check on Master node, why do noise values generated are incorrect sometimes?

Ans: This is a known bug and will be fixed in future firmware release. The short-term fix is to go into Safe mode to perform Noise check.

Q.18 Can PLC nodes with different firmware versions interoperate amongst them?

Ans: No, all PLC nodes must operate with the same firmware version.

13.Contact Information

For more information regarding the GC8802 *Demo and Evaluation* node including reference design, pricing and ordering please contact:

sales@gridComm-plc.com

GridComm Pte Ltd www.gridComm-plc.com

14.Revision (051-03)

Version	Description	Date
1.0	Initial release	28/05/2012

1.1	Device change Updates	29/11/2012
2.1	Major features update	16/06/2013
2.2	Review and rewrite	4/07/2013
2.3	Added Reset Default Factory Setting	9/09/2013
2.4	Edited Monitor Tab and API Commands for Settings Configurations	5/12/2013
2.5	Expanded on Network Management commands and added examples	27/1/2014
2.6	Added Send/Ack, ECC On, Modulation Scheme, Noise, ABPS	4/3/2014
2.7	Added Debug Mode, Sniffer, Noise Generator, Frequency Scan Non Stop. Added GC-NET PLC Quick Reference	15/4/2014
2.8	Added Advanced Scan Frequency	31/7/2014