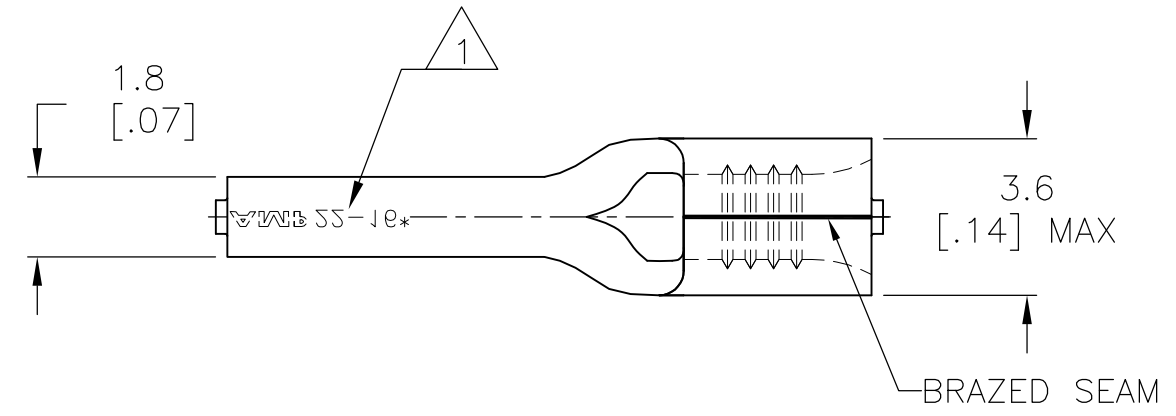


THIS DRAWING IS UNPUBLISHED. RELEASED FOR PUBLICATION
 © COPYRIGHT - By - ALL RIGHTS RESERVED.

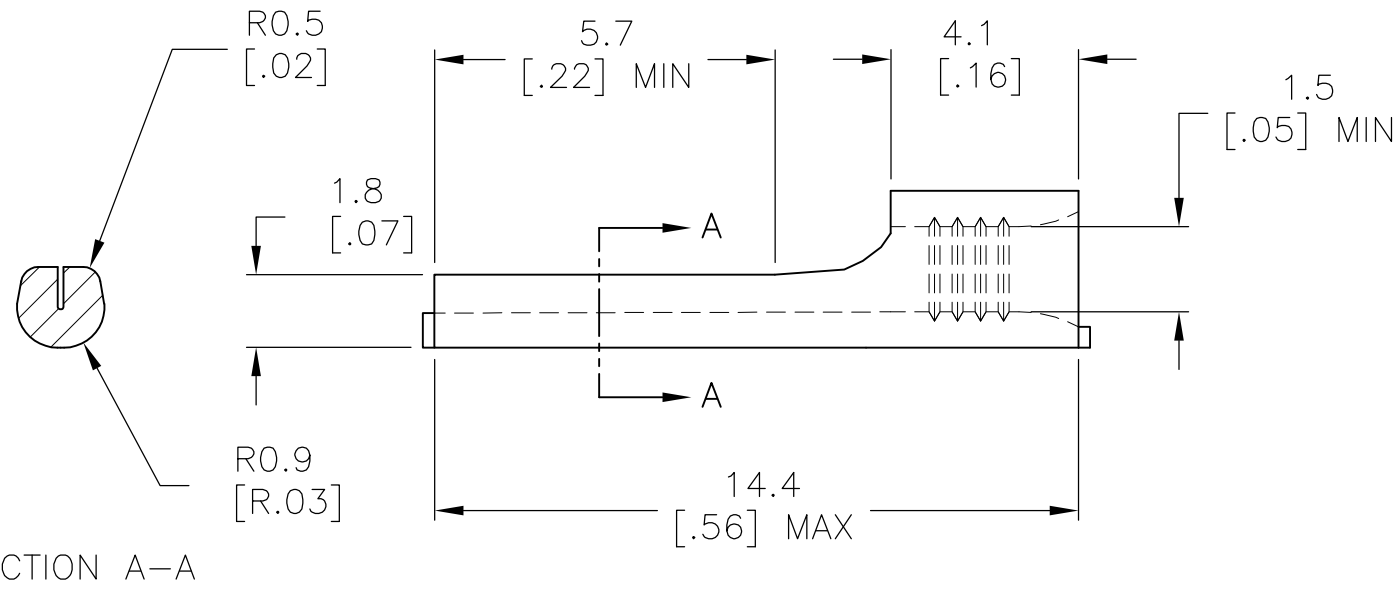
LOC	DIST	REVISIONS					
G	86	P	LTR	DESCRIPTION	DATE	DWN	APVD
			A1	REVISED PER ECO-14-003208	19MAR2014	NK	DR

AMP
WIRE RANGE

22-16 AWG
SOLID OR STRANDED



- 1 STAMP AMP 22-16* APPROX AS SHOWN
- 2 MAX RECOMMENDED OPERATING TEMPERATURE 170°C [338°F]



SECTION A-A

1000	LOOSE PIECE	165140
QTY	PACKAGE TYPE	PART NO

THIS DRAWING IS A CONTROLLED DOCUMENT.		DWN JR RUTH 12AUG10	STE TE Connectivity		
DIMENSIONS: mm [INCHES]		CHK TOM MICHIELUTTI 12AUG10			
TOLERANCES UNLESS OTHERWISE SPECIFIED:		APVD TOM MICHIELUTTI 12AUG10	NAME TERMINAL, WIRE PIN, SOLISTRAND, WIRE SIZE, 22-16 AWG		
0 PLC ± -		PRODUCT SPEC	-		
1 PLC ± 0.20 [.007]		APPLICATION SPEC	-		
2 PLC ± -		WEIGHT	-		
3 PLC ± -		SIZE	A3	CAGE CODE	00779
4 PLC ± -		DRAWING NO	C-165140		RESTRICTED TO
ANGLES ± -		-			
MATERIAL COPPER PER ASTM B152	FINISH TIN PLATE PER ASTM B545	CUSTOMER DRAWING		SCALE	6:1
		SHEET		1 OF 1	REV A1