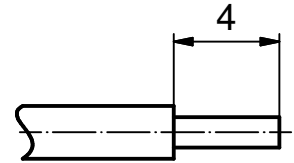


STRIPPING DIMENSION (b)



Part-no. as per finish			
(b) GOLD FLASH over NICKEL (c)	min. 20µm HARD GOLD over min. 50µm NICKEL	min. 30µm HARD GOLD over min. 50µm NICKEL	min. 50µm HARD GOLD over min. 50µm NICKEL
161A18309X	161B18309X	161C18309X	161J18309X

- (b) **NOTES:**
1. Material: Copper alloy
 2. Finish: See table
 3. Temperature range: -55 °C to +125 °C
 4. Rated current: 5 A maximum
 5. Contact resistance: <= 10 mOhm
 6. Crimping: Use crimp tool 360X10329X
With tool insert 360X20069X
Selector settings: 7 for AWG 24
6 for AWG 26
5 for AWG 28

Directive 2002/95/EC RoHS compliant

THIS DRAWING MAY NOT BE COPIED OR REPRODUCED IN ANY WAY, AND MAY NOT BE PASSED ON TO A THIRD PARTY WITHOUT WRITTEN PERMISSION. OWNERSHIP AND COPYRIGHT OF CONEC GmbH

DO NOT ALTER CAD DRAWING BY HAND

				tolerance DIN ISO 2768-m	dim. in mm
				date	name
				drawn 04.06.03	Lehmenkühler
				appd. 10.06.03	Kühle
2 x d	Ä5346	17.09.2014	K.H.	norm	
1 x c	Ä 4116	26.09.11	Lehm.	d-old	
4 x b	Ä 3698	24.08.10	Lehm.		
a	Original				
rev.	description	date	name		

scale:	5:1	
material:	SEE NOTES	
title:	CRIMP PLUG CONTACT screw machined version accepts cable AWG 28-24	
dwg no:	Inventor 10	DIN-A4
	16K1A968	sh: 1
part no:	SEE TABLE	