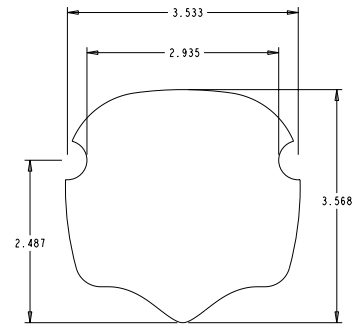


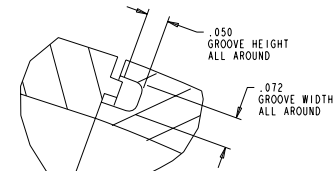
NOTES:

1. PACKAGING:
SHIPPED UNASSEMBLED. HARDWARE PACKAGED IN SEPARATE PLASTIC BAG. HANDLE AND FACEPLATE IN PLASTIC BAG WITH LABEL.
2. MATERIAL:
HANDLE: POLYPROPYLENE, GLASS REINFORCED
COLOR: BLACK
FACEPLATE: POLYPROPYLENE, GLASS REINFORCED
COLOR: BLACK
(2) 4-40UNC-2B, STAINLESS STEEL INSERTS
HARDWARE:
CROSS BOLT, NUT AND LOCKWASHER: STAINLESS STEEL.
FACEPLATE SCREWS AND LOCKWASHERS: STAINLESS STEEL
STRAIN RELIEF SCREWS: STEEL.
3. HARDWARE SPECIFICATIONS:
CROSS BOLT AND NUT: 10-32UNF-2A, 1.375" LONG
BUTTON HEAD HEX DRIVE WITH SPLIT LOCK WASHER
(2) FACEPLATE SCREWS: 4-40UNC-2A, 1.500" LONG
BUTTON HEAD HEX DRIVE WITH SPLIT LOCK WASHER
STRAIN RELIEF: HI-LO TYPE SELF THREADING SCREW

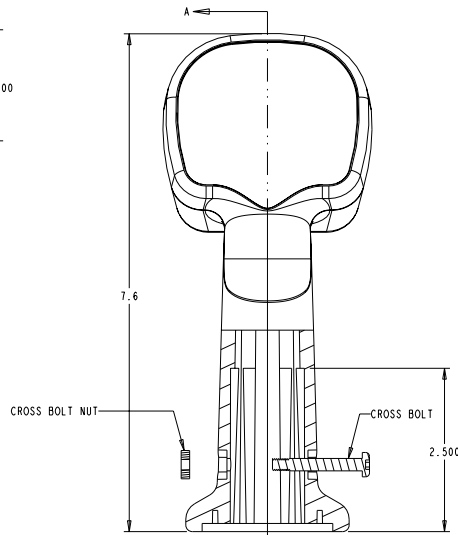
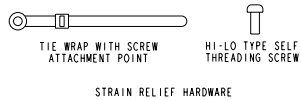
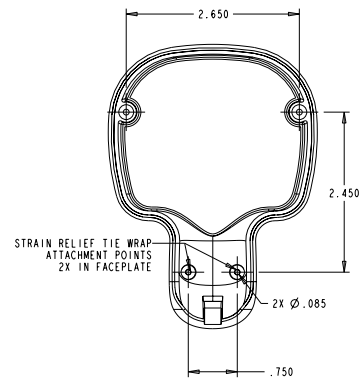
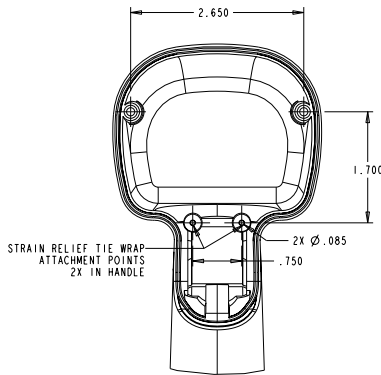
G3-0101			
REV	OCN	DATE	APR
2	008153	22 MAR 01	LBG
3	008837	30 MAY 01	LBG



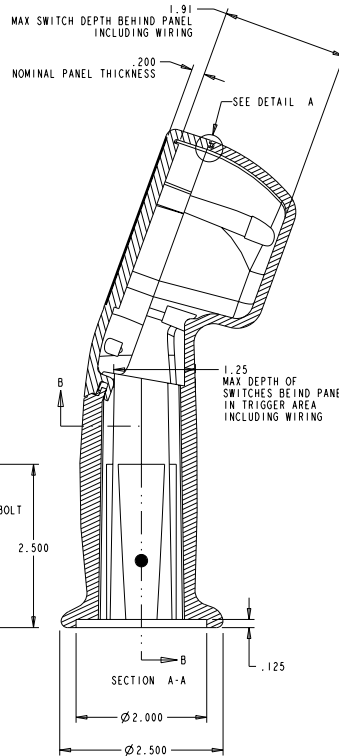
MAX AREA FOR SWITCH PLACEMENT IN FACEPLATE
SCALE 1:1



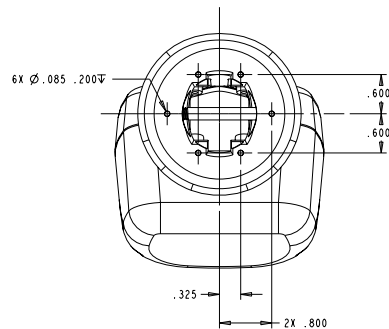
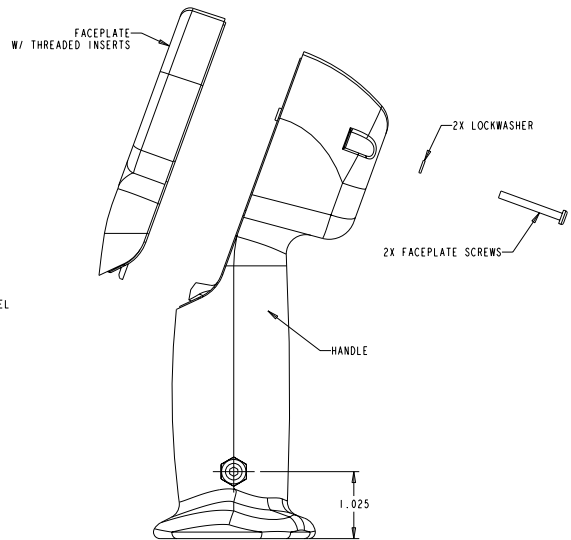
DETAIL A
SEAL RING GROOVE DETAIL
SCALE 5:1



SECTION B-B



SECTION A-A



UNLESS OTHERWISE SPECIFIED: DIMENSIONS ARE IN INCHES. TOLERANCES: .XX ±.03 .XXX ±.010 ANGLES 8° DO NOT SCALE THIRD ANGLE PROJECTION	OTTO CONTROLS DIVISION OF OTTO ENGINEERING INC. CARPENTERSVILLE, ILLINOIS USA		DESCRIPTION G3, UNIVERSAL GRIP MEDIUM	
	<input checked="" type="checkbox"/> MAJOR <input type="checkbox"/> CRITICAL <input type="checkbox"/> SPC CRITICAL	DRWN: LBG CHKD: RJK APPD: JTT	SIZE: C FSCM NO: 21649 DATE: 30-May-01	DRAWING NO.: G3-0101 Scale 3:4