

| | | | |
|---------------------|-----------------|-------------------------|-------------|
| DRG. No. C 42801 | | SWITCH MN6CTQMS/2663 | |
| SHEET OF SHEETS | | | |
| DRAWN P.V. | DATE 6/12/95 | APPROVED | |
| TRACED | | DRAWING OFFICE | SALES DEPT. |
| SCALE 1:1 | P. Vinaygar. | | |

DO NOT SCALE

INSTALLATION DRAWING

THIRD ANGLE PROJECTION

© THIS DRAWING IS THE PROPERTY OF BURGESS MICRO SWITCH CO. LTD. AND MUST NOT BE USED OR COPIED, ENTIRELY OR IN PART, WITHOUT THE PERMISSION OF BURGESS MICRO SWITCH CO. LTD.

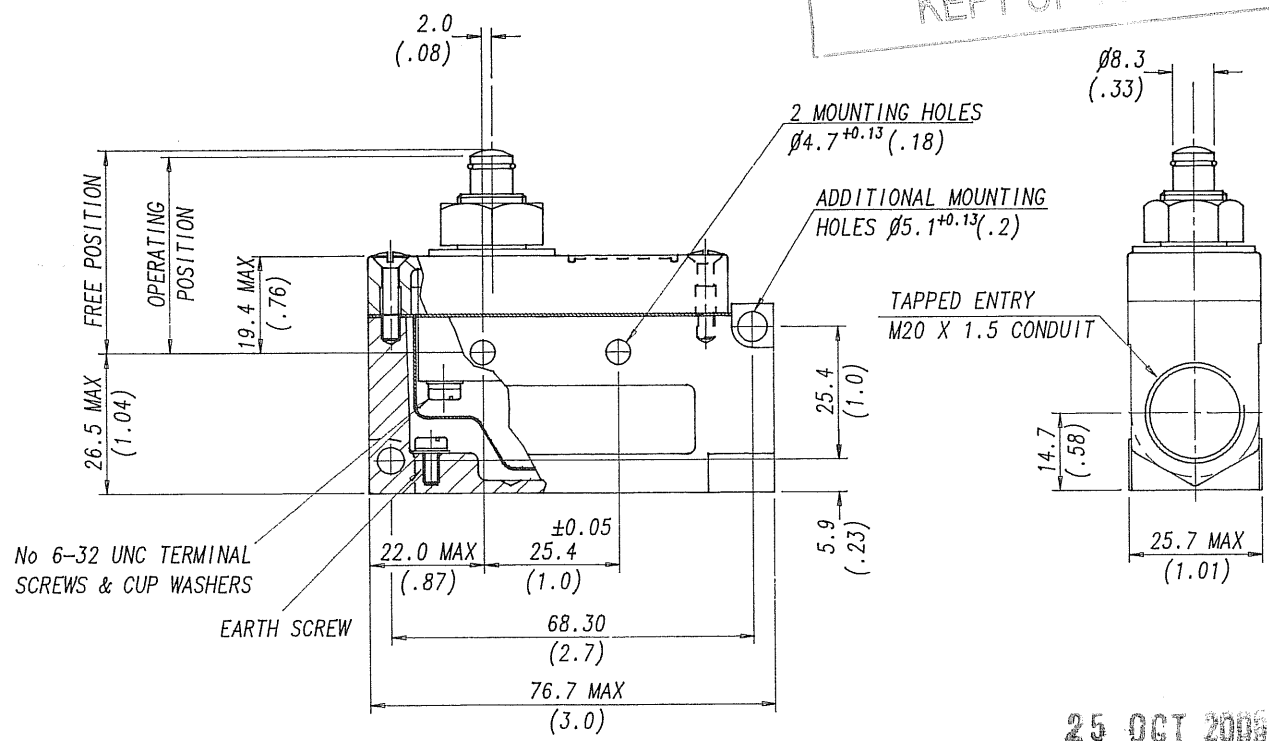
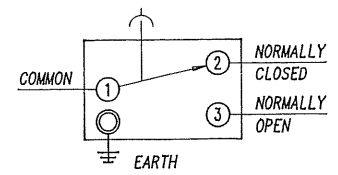
UNCONTROLLED ISSUE
PRINTED AND NOT BE
KEPT UP TO DATE

SPECIFICATION

ACTUATING FORCE :- 4.2N (15.1)MAX
 RELEASE FORCE :- 1.7N (6.1)MIN
 FREE POSITION :- 38.6 (1.52)MAX
 OPERATING POSITION :- 38.1^{±0.4} (1.5)
 MOVEMENT DIFFERENTIAL:- 0.08(.003)MAX
 OVERTRAVEL(AVAILABLE) :- 4.6 (.18)

SPECIAL FEATURE :-
 TO BE INDIVIDUALLY PACKED WITH LABEL INTO A SUITABLE PLASTIC BAG TO R.S. REQUIREMENTS

DIAGRAM OF CONNECTIONS



25 OCT 2006

BURGESS MICRO SWITCH COMPANY LTD.
 DUKES WAY, TEAM VALLEY, GATESHEAD,
 TYNE & WEAR NE11 0UB
 Tel. 091 4877171 Telex: 53229 Fax: (3) 091 4871610

| ISSUE No. & DATE | | | | |
|------------------|--|--|--|--|
| 1 | | | | |

THIS DRAWING MUST ONLY BE AMENDED ON CAD SYSTEM

ALL DIMENSIONS SPECIFIED IN MILLIMETRES.
 TOLERANCES UNLESS STATED:- NO DECIMAL PLACE ± 0.5
 1 DECIMAL PLACE ± 0.25 2 DECIMAL PLACES ± 0.15
 ANGULAR ± 1° INCH-OUNCE UNITS (IN BRACKETS)

DEGREE OF PROTECTION:- IP40
 WEIGHT:-

SWITCH
 MN6CTQMS/2663

DRG. No.
 C 42801
 SHEET OF SHEETS