

MATERIALS AND FINISHES

BODY ZINC ALLOY  
PLATED NICKEL

CENTER CONTACT PHOSPHOR BRONZE  
PLATED GOLD

INSULATOR POLYPROPYLENE (94-V0)

MOUNTING POST PHOSPHOR BRONZE  
PLATED TIN

SOLDER TAIL COPPER OVER STEEL  
PLATED TIN

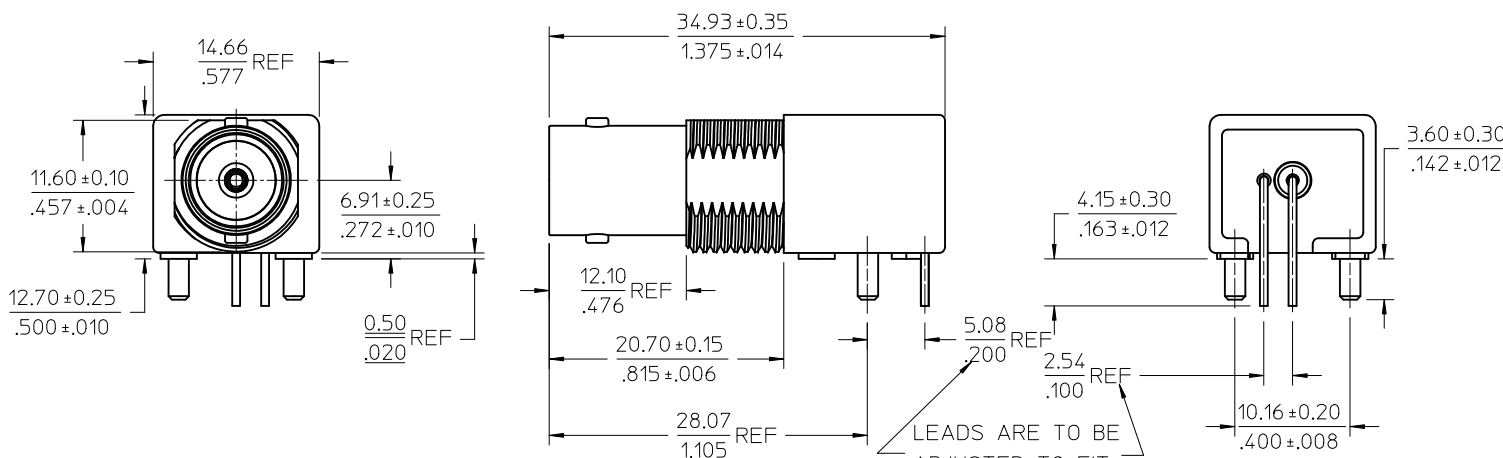
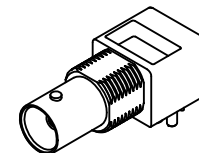
JAM NUT BRASS  
PLATED NICKEL

LOCK WASHER PHOSPHOR BRONZE  
PLATED NICKEL

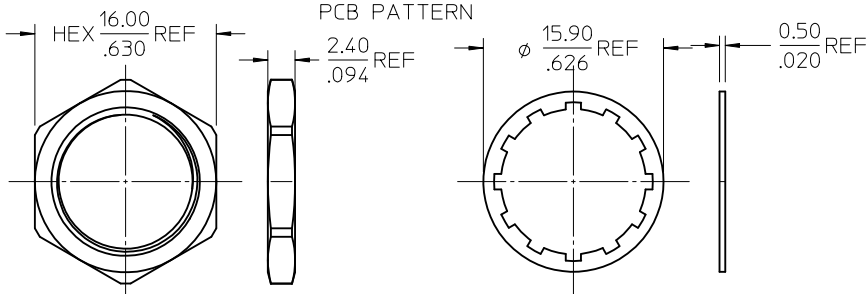
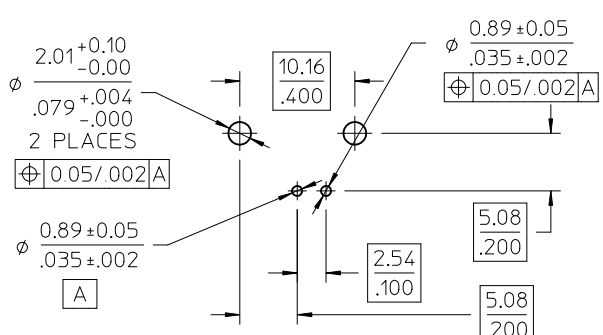
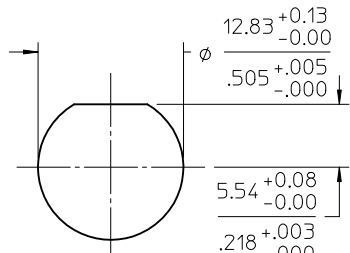
BNC JACK  
75 OHM  
INTERFACE

1/2-28 UNEF-2A

TOP VIEW



LEADS ARE TO BE  
ADJUSTED TO FIT  
PCB PATTERN



RECOMMENDED MOUNTING HOLE  
PANEL THICKNESS: 5.50 (.216) MAX  
RECOMMENED MOUNTING TORQUE:  
1.36 N-m (12 INCH LBS) MAX

RECOMMENDED PCB HOLE  
CONFIGURATION

73171-4340	QTY (1) OF 73101-0400 IN SINGLE BAG WITH LABEL
73101-0401	WITH JAM NUT AND WASHER
73101-0400	WITHOUT JAM NUT AND WASHER
PART NO.	DESCRIPTION

PS-89675-1030	PRODUCT SPECIFICATION
SPECIFICATION	DESCRIPTION

CHG: ADD 73171-4340  
EC NO: URF2012-0419  
DRAWN BY: DRWINBOMALLEY 2012/01/17  
CHKD BY: CHKD:AZR 2012/01/17  
APPR: JIENER 2012/01/24

QUALITY SYMBOLS  
▽=0  
▽=0

DESCRIPTION  
A3

GENERAL TOLERANCES (UNLESS SPECIFIED)

	mm	INCH
4 PLACES	± .005	± .0002
3 PLACES	± .003	± .0001
2 PLACES	± .002	± .00005
1 PLACE	± .001	± .00002
ANGULAR	± .0001°	

DIMENSION STYLE: MM/IN

SCALE: METRIC

DESIGN UNITS: METRIC

THIRD ANGLE PROJECTION

DRAWN BY: MICHAEL DATE: 2007/06/07  
CHECKED BY: KERRIE DATE: 2007/06/07  
APPROVED BY: MISEN DATE: 2007/06/07

TITLE: BNC JACK,R/A PCB,75 OHMS  
DIE CAST, RECEPTACLE  
BNC-J/RA/PCB

MATERIAL NO. SEE TABLE  
DOCUMENT NO. SD-73101-040

MOLEX MOLEX INCORPORATED

DRAFT WHERE APPLICABLE MUST REMAIN WITHIN DIMENSIONS

THIS DRAWING CONTAINS INFORMATION THAT IS PROPRIETARY TO MOLEX INCORPORATED AND SHOULD NOT BE USED WITHOUT WRITTEN PERMISSION

SHEET NO. 1 OF 1