

Precious Metal Commutation

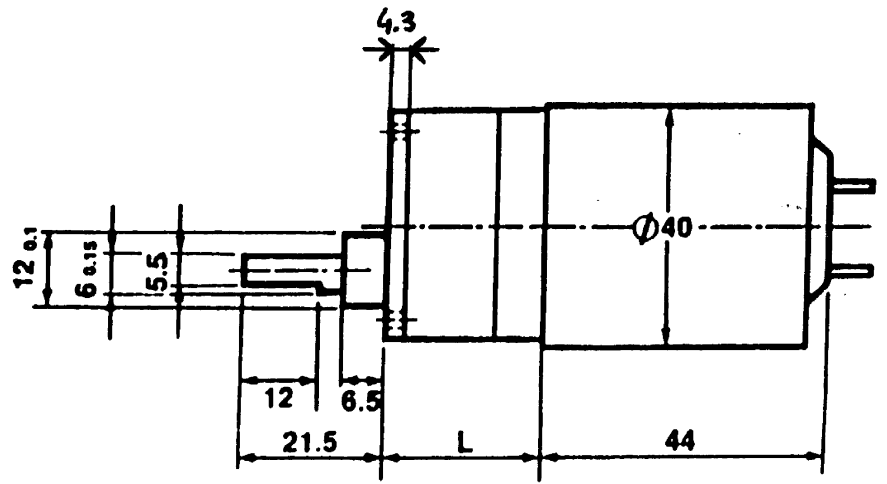
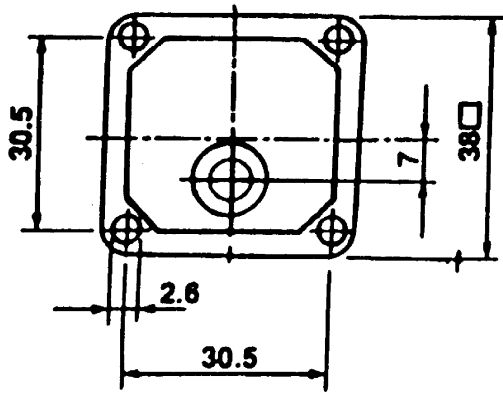
Part number

2140 - - - **000**

- 000 Standard
- ... Customer specification
- 1 Precious metal brushes
- 1 Three holes for Pt-screws 2.5
- 1 Sleeve bearings
- 11 Shaft diameter 2.5 mm, shaft length 9 mm (Special version)
- 22 Shaft diameter 3 mm, shaft length 10.2 mm (with C-clip)
- * Winding number according to list
- 40 Motor diameter
- 21 Code for F-motor

Motor characteristics

Winding	2140	931			
Nominal voltage	V	6.0	12	24	
Stall torque	mNm	30	32	31	
No load speed	rpm	3950	4090	4110	
Max. power output	mW	3130	3410	3320	
Max. continuous operating current	mA	947	493	243	
Max. efficiency	%	81	81	81	
No load current	mA	23	12	6.2	
Rotor inertia	gcm ²	23.2	23.2	22.3	
Terminal resistance	Ohm	2.8	10	43	
Torque constant	mNm A ⁻¹	14	28	55	
Mechanical time constant	ms	32	32	31	
Thermal resistance rotor-housing	KW ⁻¹	8.8	8.8	8.8	
Thermal resistance housing-ambient	KW ⁻¹	10.4	10.4	10.4	
Max. permissible rotor temperature	°C	85	85	85	
Weight	g	187	187	187	



size 1, 2, 8 and 9
size 5 and 12

L. 24
L. 29

size 3, 4, 10 and 11
size 6, 7, 13 and 14

L. 26
L. 31