

FULLY SEALABLE EMILY LENSES FOR CREE XP-E



- Specially designed for Cree XLAMP XP-E series of LEDs.
- Lens material optical grade PMMA with high UV and temperature resistance (105°C/220°F)
- High optical efficiency, up to 90%
- No lens holder. Lens has small position pins, fastening to heat sink with a PU foam adhesive tape of automotive grade. For mounting instruction, please see datasheet at the bottom page.
- We advise customer to ensure the suitability and sufficiency of the bond in the end product. For example, mechanical stress, vibration and holes on the surface of the circuit board weaken the strength of the tape.
- Please check fastening details from this link: (http://www.ledil.com/datasheets/DataSheet_TAPE.pdf)
- Lens foot can be potted with resin without losses in optical efficiency (**fully sealed construction** of luminaire possible)
- Diameter 26 mm, height 15mm

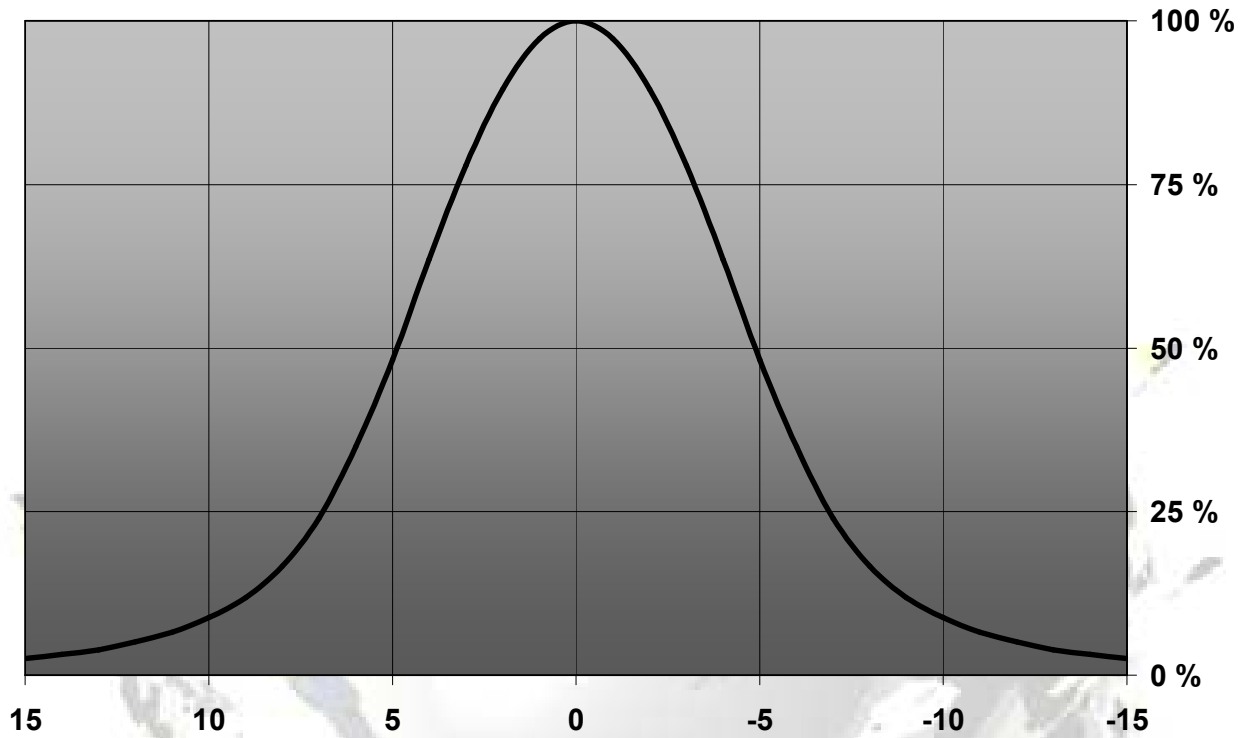
LENS TYPES

NAME	ORDERING CODE	FWHM Angle
Emily Smooth Spot	CA11387_Emily-SS-XP	±5°
Emily Medium	CA11388_Emily-M-XP	±9°
Emily Medium 2	CA11391_Emily-M2-XP	±14°
Emily Oval	CA11389_Emily-O-XP	±22° x ±5°
Emily Oval 90°	CA11390_Emily-O-90-XP	±22° x ±5°

© Ledil Oy – Subject to change without prior notice

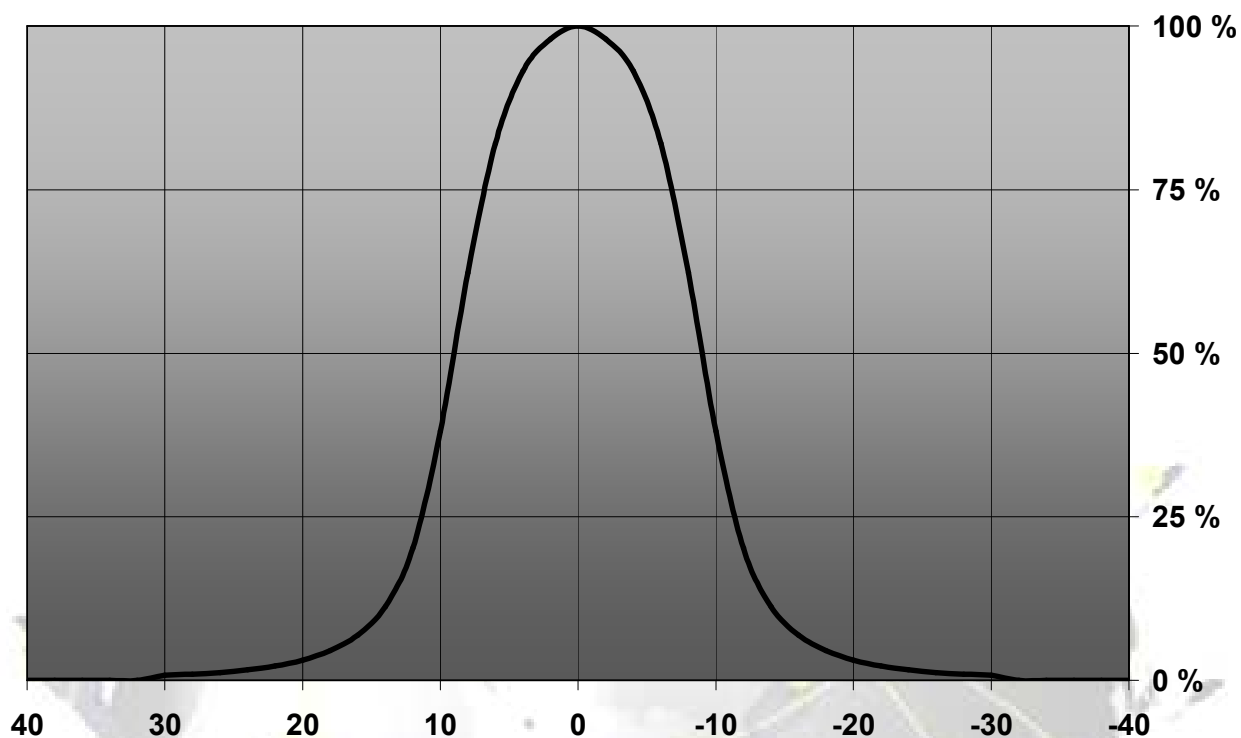
MEASUREMENTS

Relative Intensity of CA11387_Emily-SS-XP

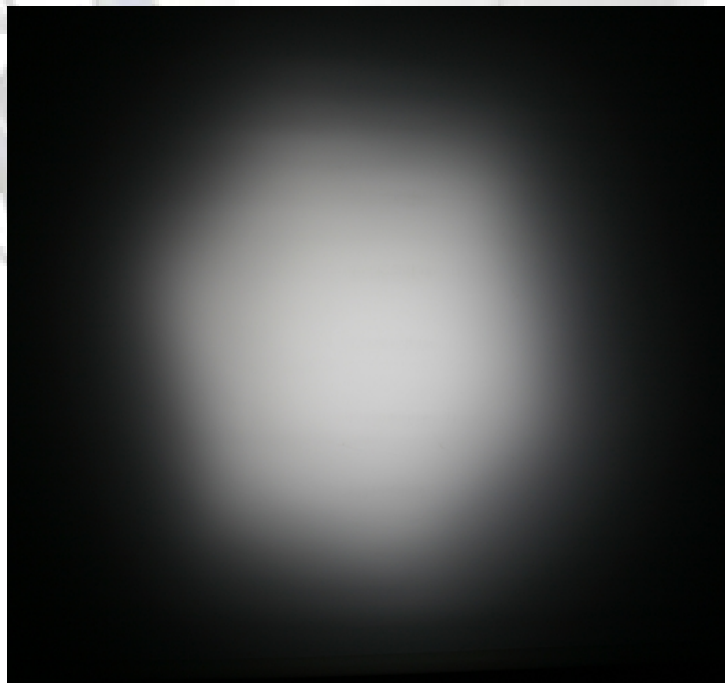
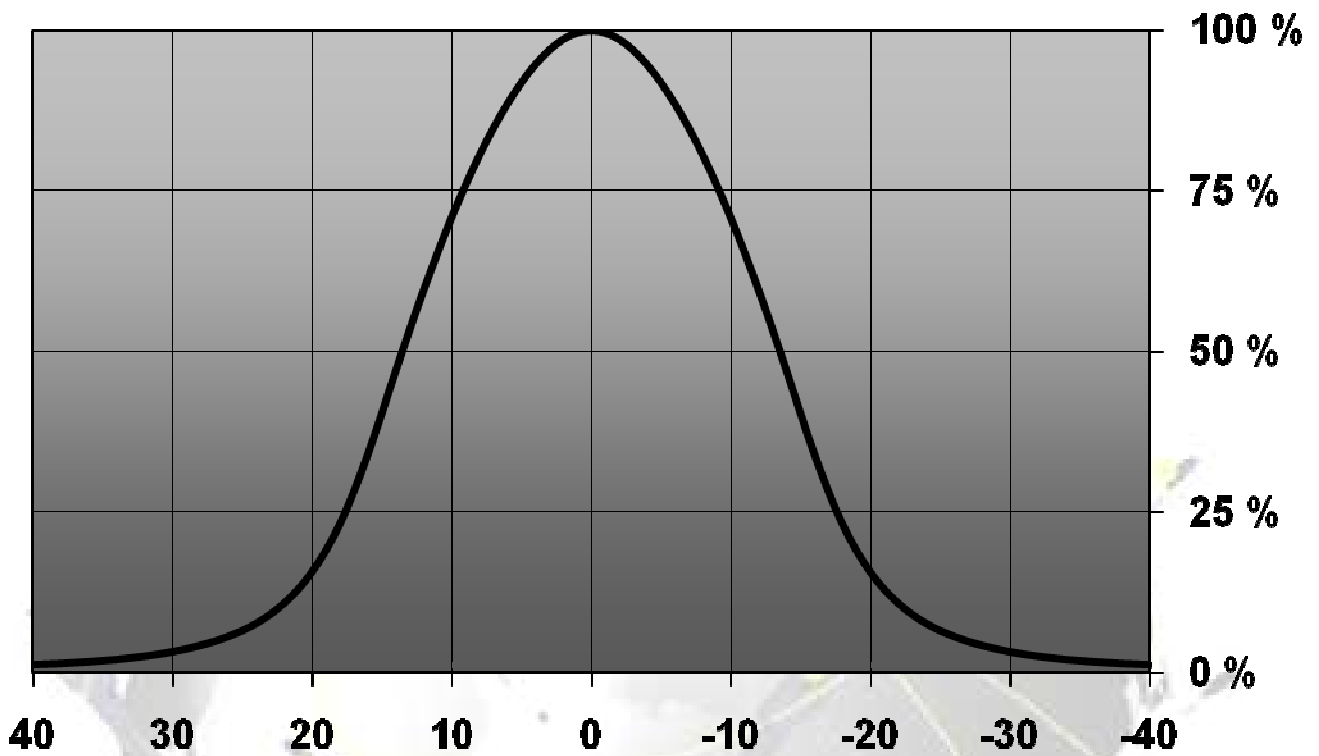


© Ledil Oy – Subject to change without prior notice

Relative Intensity of CA11388_Emily-M-XP

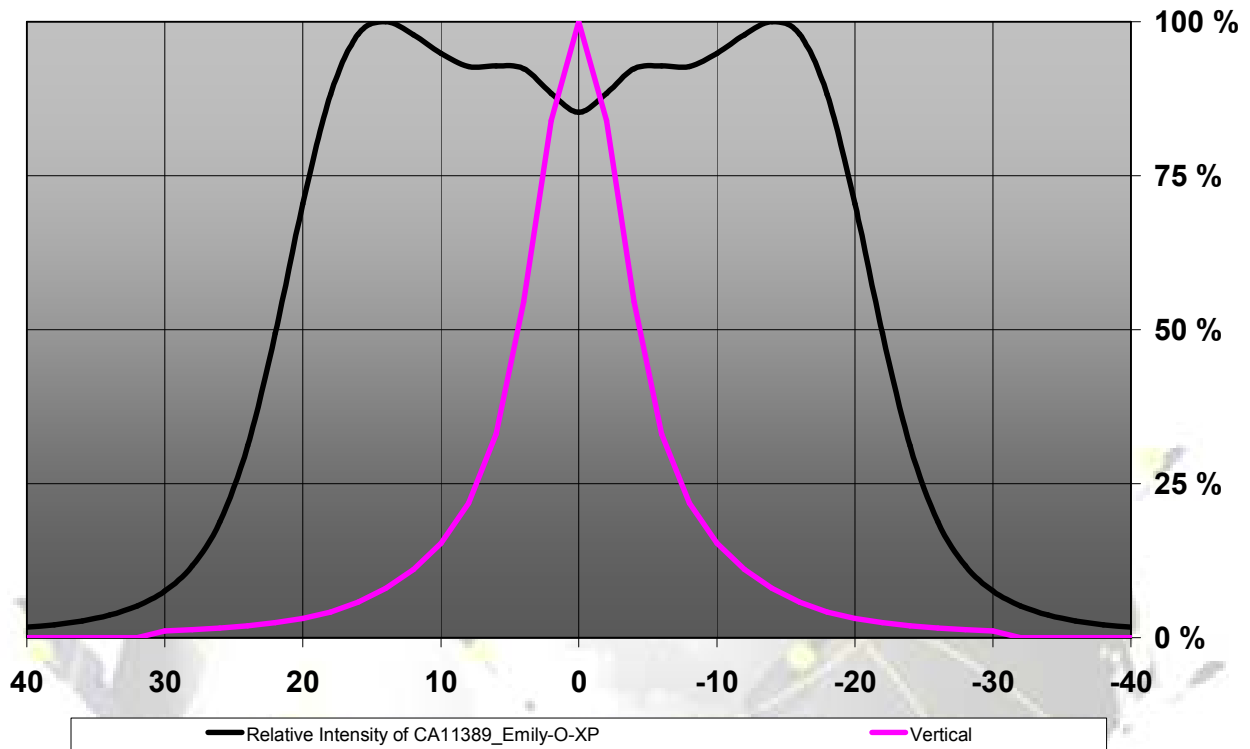


Relative intensity of CA11391_EMILY-M2-XP



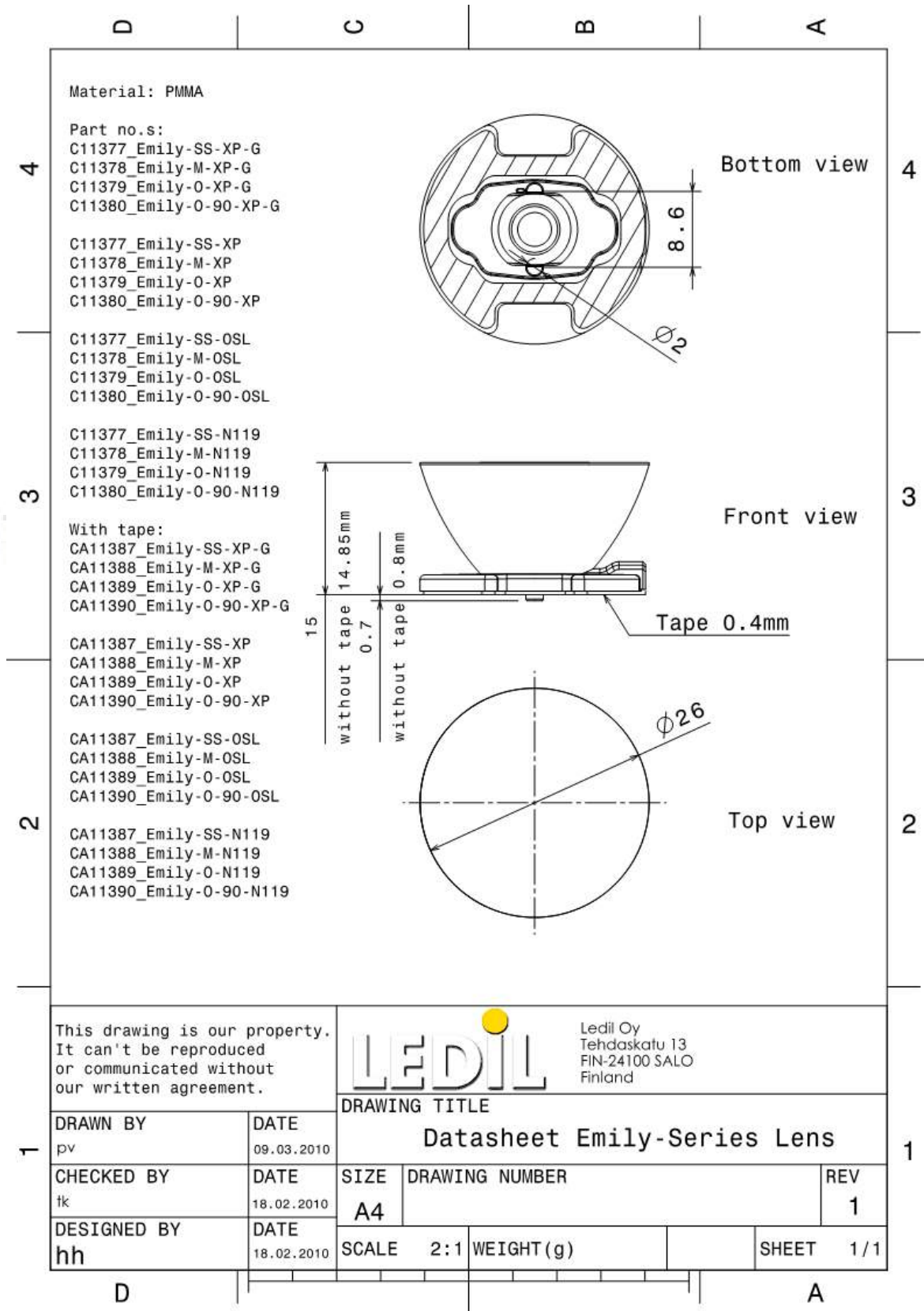
© Ledil Oy – Subject to change without prior notice

Relative Intensity of CA11389_Emily-O-XP



© Ledil Oy – Subject to change without prior notice

DRAWINGS



© Ledil Oy – Subject to change without prior notice