



TE Internal #: 3-292234-0

Connector Assembly, Plug, Wire-to-Wire, 30 Position, 1.5 mm [.059 in] Centerline, Crimp/IDC, 2 Row, Black, Wire & Cable, Signal, Panel Mount

[View on TE.com >](#)

Connectors > PCB Connectors > Wire-to-Board Connectors > Wire-to-Board Connector Assemblies & Housings > Mini CT Drawer Connector Assemblies



Connector Product Type: **Connector Assembly**

Connector & Housing Type: **Plug**

Connector System: **Wire-to-Wire**

Number of Positions: **30**

Centerline (Pitch): **1.5 mm [.059 in]**

[All Mini CT Drawer Connector Assemblies \(15\)](#)

Features

Product Type Features

Connector Product Type	Connector Assembly
Connector & Housing Type	Plug
Connector System	Wire-to-Wire
Sealable	No
Connector & Contact Terminates To	Wire & Cable

Configuration Features

Number of Positions	30
Number of Rows	2

Body Features

Primary Product Color	Black
-----------------------	-------

Contact Features

Contact Current Rating (Max)	1 A
------------------------------	-----

Termination Features

Termination Method to Wire & Cable	Crimp/IDC
------------------------------------	-----------

Mechanical Attachment

--	--



Mating Retention	Without
------------------	---------

Connector Mounting Type	Panel Mount
-------------------------	-------------

Housing Features

Centerline (Pitch)	1.5 mm[.059 in]
--------------------	-----------------

Dimensions

Row-to-Row Spacing	3 mm[.118 in]
--------------------	---------------

Usage Conditions

Operating Temperature Range	-30 – 105 °C[-22 – 221 °F]
-----------------------------	----------------------------

Operation/Application

Circuit Application	Signal
---------------------	--------

Packaging Features

Packaging Method	Loose Piece
------------------	-------------

Product Compliance

For compliance documentation, visit the product page on TE.com>

EU RoHS Directive 2011/65/EU	Compliant
EU ELV Directive 2000/53/EC	Compliant
China RoHS 2 Directive MIIT Order No 32, 2016	No Restricted Materials Above Threshold
EU REACH Regulation (EC) No. 1907/2006	Current ECHA Candidate List: JAN 2025 (247) Candidate List Declared Against: JAN 2025 (247) Does not contain REACH SVHC
Halogen Content	Not Low Halogen - contains Br or Cl > 900 ppm.
Solder Process Capability	Not applicable for solder process capability

Product Compliance Disclaimer

This information is provided based on reasonable inquiry of our suppliers and represents our current actual knowledge based on the information they provided. This information is subject to change. The part numbers that TE has identified as EU RoHS compliant have a maximum concentration of 0.1% by weight in homogenous materials for lead, hexavalent chromium, mercury, PBB, PBDE, DBP, BBP, DEHP, DIBP, and 0.01% for cadmium, or qualify for an exemption to these limits as defined in the Annexes of Directive 2011/65/EU (RoHS2). Finished electrical and electronic equipment products will be CE marked as required by Directive 2011/65/EU. Components may not be CE marked. Additionally, the part numbers that TE has identified as EU ELV compliant have a maximum concentration of 0.1% by weight in homogenous materials for lead, hexavalent chromium, and mercury, and 0.01% for cadmium, or qualify for an exemption to these limits as defined in the Annexes of Directive 2000/53/EC (ELV). Regarding the REACH Regulation, the information TE provides on SVHC in articles for this part number is based on the latest European Chemicals Agency (ECHA) 'Guidance on requirements for substances in articles' posted at this URL: <https://echa.europa.eu/guidance-documents/guidance-on-reach>



Compatible Parts



TE Part # 3-292236-0
1.5 MINI CT DC DRAWER REC ASSY

Customers Also Bought



TE Part #353715-2
DYNAMIC D-3 REC CONT. 3L AU 0.38



TE Part #3-353293-7
1.5MM CT MT REC ASSY 17P BLACK



TE Part #2-353293-9
1.5MM CT MT REC ASS'Y 9P BLACK



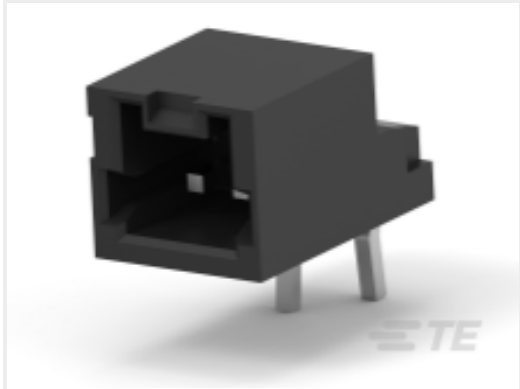
TE Part #1-292254-4
CT RELAY HDR ASSY 14P NAT



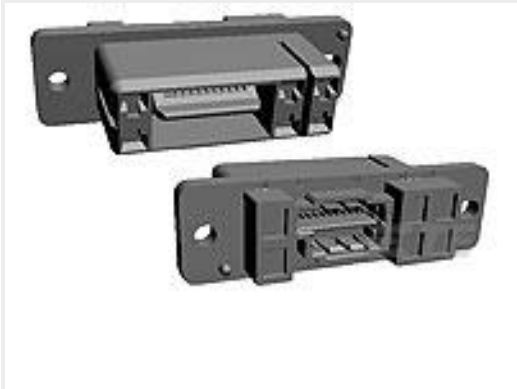
TE Part #2-353293-4
1.5MM CT MT REC ASS'Y 4P BLACK



TE Part #170262-1
EIS CONTACT



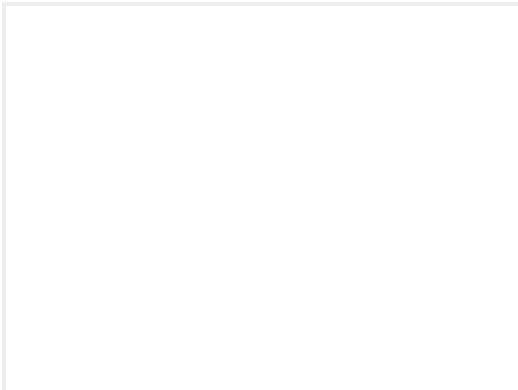
TE Part #2-292206-2
MINI CT SGL DIP H 2P BLACK



TE Part #2-1674755-0
REC ASSY FOR MINI CT HYBIRD DR



TE Part #4-353294-0
AMP MINI D/R HDR HSG 40P NATU



TE Part #8-292112-4
MT REC ASSY (#26,28)

Documents

Product Drawings

1.5 MINI CT DC DRAWER PLUG ASS

English

CAD Files

3D PDF

3D



Customer View Model

[ENG_CVM_CVM_3-292234-0_B.2d_dxf.zip](#)

English

Customer View Model

[ENG_CVM_CVM_3-292234-0_B.3d_igs.zip](#)

English

Customer View Model

[ENG_CVM_CVM_3-292234-0_B.3d_stp.zip](#)

English

By downloading the CAD file I accept and agree to the [Terms and Conditions](#) of use.

Datasheets & Catalog Pages

[Low Power Drawer Connectors QRG](#)

English

Product Specifications

[Product Specification](#)

English

[Product Specification](#)

English