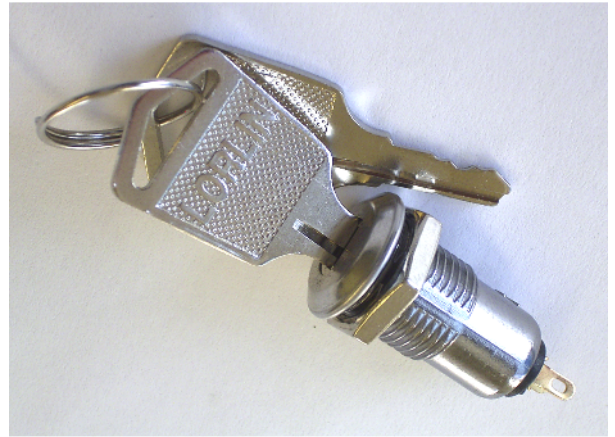


# SKL KEY LOCK SWITCH

**RoHS COMPLIANT**

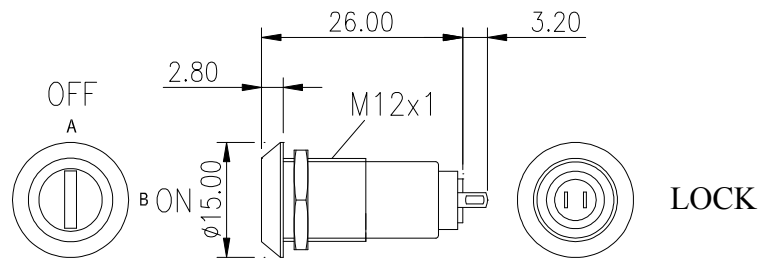
## GENERAL ELECTRICAL & MECHANICAL SPECIFICATION

Switch Rating	0.5A @ 24Vac/dc resistive
Life:	>10,000 Cycles
Proof voltage:	1000VAC 1 minute (initial)
Insulation Resistance:	>500MΩ min at 500Vdc(initial)
Contact Resistance:	<20 mΩ max

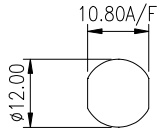


## GENERAL FEATURES

- Zinc alloy die cast housing
- Stainless steel capped bezel
- Single pole, single throw lock switch, 90° indexing.
- Bright chrome plated housing
- Brass keys, nickel plated
- Key insertion/removal in both positions as required
- Radial cylinder with 4 pin tumblers.
- Low Security.
- 10 Differ Key Combination



PANEL PIERCING DETAILS



ORDERING CODE	KEY	KEY WITHDRAWAL	KEY TRAVEL	SWITCH OFF - ON
SKL-12-A-S-2	SAME	A & B	90°	
SKL-12-B-S-2	SAME	A ONLY	90°	
SKL-12-A-D-2	DIFFER	A & B	90°	
SKL-12-B-D-2	DIFFER	A ONLY	90°	

Same Key Ref Key 134 (SKL)