

ART-CASE

Order data on **pages 163-165**



ERGONOMIC



EURO

Euro plug module in accordance with DIN VDE 0620 part 101.

Plug section in flame-resistant materials (UL 94 V-0).

In the basic enclosure shapes "round" and "square" available.

Fastening pillars for mounting PCBs.

Protection class IP 40

With "level" or "inclined" bottom part for a user-friendly operating area – good accessible and easy legible.



RELIABLE CONTACT

Protection class < IP 40

Simply an extremely functional solution for your electronics – robust and impact-resistant.

D, F, UK

Flame-resistant materials (UL 94 V-0).

German version also with integrated socket.

Robust and impact-resistant. The ball-thrust hardness test is performed at 125°C.

Fastening pillars for the PCB mounting, suitable for self-tapping screws (set with 4 pieces supplied with the case).

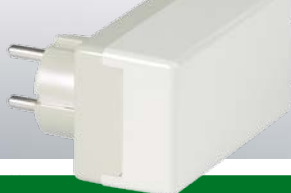


detailed drawings see our website www.okw.com




PLUG CASE

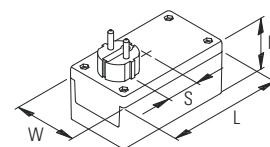
Order data on **page 163**





PLUG CASE

PLUG CASE	Outside dim. in mm				Version / Equipment (dim. in mm)			Material	Part-No.	
	L	W	H	S	plug section	integr. socket	max. size of PCB bottom / top part		top part off-white RAL 9002	bottom part pebble grey RAL 7032
 D	120	65	55	34	II	DIN 49441 R2	DIN 49440	96 x 58 / -		A 90 22 465
 UK	120	65	40	27	I	BS 1363	-	96 x 58 / -	flame-resistant material according to UL 94 V-0	A 90 20 165
 F / D	100	50	40	25	I	DIN 49441 R2	-	76 x 43.5 / -		A 90 11 665
	120	65	65	34	I	DIN 49441 R2	-	96 x 58 / 95 x 58.5		A 90 21 665






ART-CASE

DESIGN SELECTION



ART-CASE WITH INTEGRATED EURO PLUG IN ACCORDANCE WITH DIN VDE 0620 PART 101

ART-CASE	Outside dim. in mm		Equipment (dim. in mm)		Material	height	Part-No. with top part "F"		Part-No. with top part "H"		
	L	W	bottom part	max. dim. keypad (only with top part "F")			off-white RAL 9002	black RAL 9005	off-white RAL 9002	black RAL 9005	
R110	110	110	 "level"	ø 72	ABS (UL 94 HB), live parts flame-resistant material (UL 94 V-0)	30	B 50 11 027	B 50 11 029	38	B 50 11 127	B 50 11 129
	110	110	 "inclined"	ø 72		38	B 50 11 227	B 50 11 229	41	B 50 11 327	B 50 11 329
S110	110	110	 "inclined"	79.5 x 79.5		38	B 50 13 227	B 50 13 229	-	-	
						-	-	-	-		

ART-CASE ACCESSORIES

Article	For ART-CASE	Version / Application	Part-No.
 Set of screws	all	4 x ø 2.5 x 5 mm, self-tapping crosshead screw (PZ1), for mounting PCBs	B 51 11 201