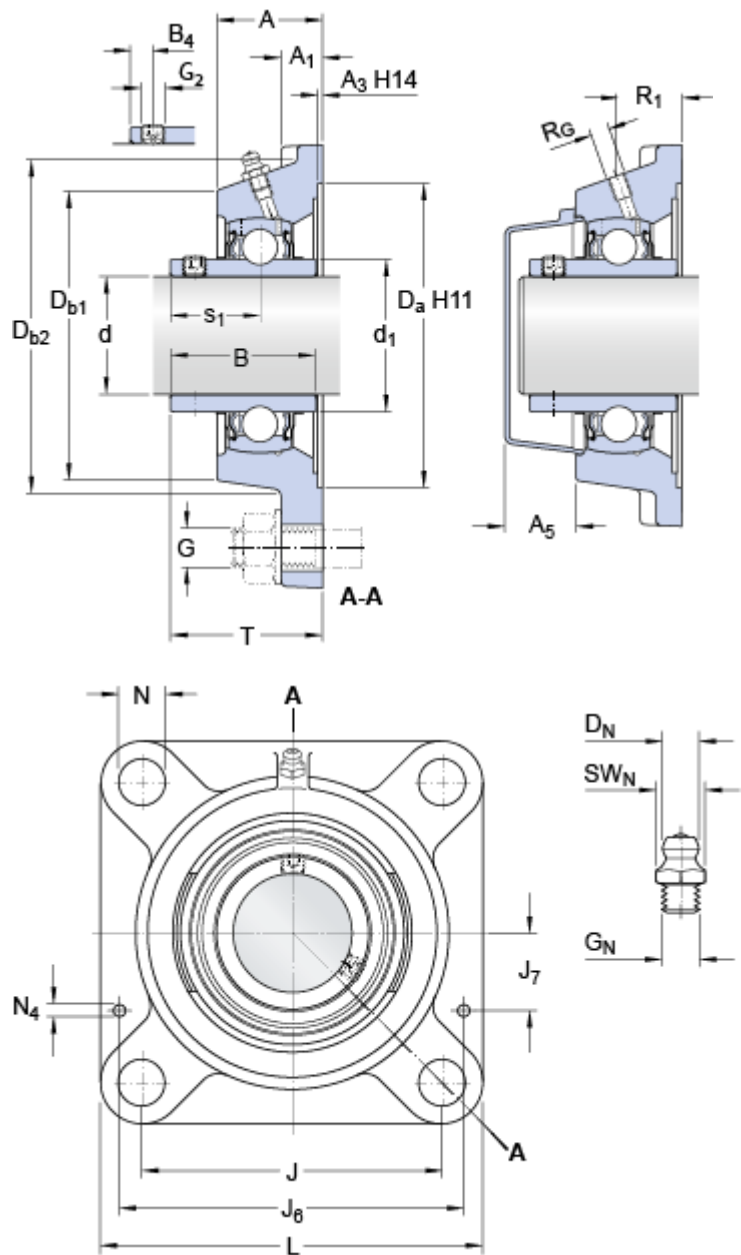


FY 50 TF

Compliance with standard	ISO
Housing material	Cast iron
Sealing solution	Standard seals with additional flingers

Dimensions



d	50	mm
d ₁	≈ 62.51	mm
A	43	mm
A ₁	15	mm
A ₃	3.2	mm
A ₅	33	mm
B	51.6	mm
B ₄	9	mm
D _a	125.4	mm
D _{b1}	107	mm
D _{b2}	118	mm
J	111	mm
L	143	mm
N	18	mm
s ₁	32.6	mm
T	60.6	mm

Grease fitting

D _N	6.5	mm
SW _N	7	mm
G _N	1/4-28 SAE-LT	

Threaded hole

R _G	1/4-28 UNF	
R ₁	28.5	mm

Dowel pins

	J ₆	129	mm
	J ₇	35.5	mm
	N ₄	4	mm
Calculation data			
Basic dynamic load rating	C	35.1	kN
Basic static load rating	C ₀	23.2	kN
Fatigue load limit	P _u	0.98	kN
Limiting speed		4000	r/min
with shaft tolerance h6			
Mass			
Mass bearing unit		2.3	kg
Mounting information			
Thread grub screw	G ₂	M10x1	
Hexagonal key size for grub screw	N	5	mm
Recommended tightening torque for grub screw		16.5	N·m
Recommended diameter for attachment bolts, mm	G	16	mm
Recommended diameter for attachment bolts, inch	G	0.625	in
Included products			
Housing		FY 510 M	
Bearing		YAR 210-2F	
Associated products			
End cover		ECY 210	