

# Ex position switches

## // EEx 95 range, actuator

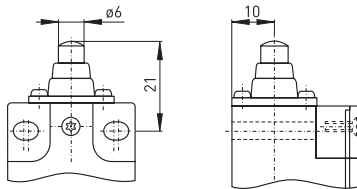
### Features/Options

- Actuator type B to DIN EN 50 047
- Actuator with watertight collar

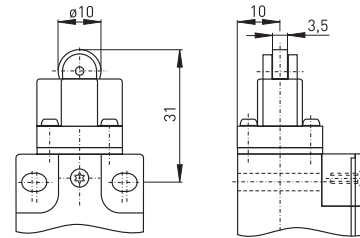
### Features/Options

- Actuator type C to DIN EN 50 047
- Wear-resistant thermoplastic roller
- Metal roller available on request
- Can be supplied with actuator turned by 4 x 90°

## // Plunger W



## // Roller plunger R



### Contact variants: Switch travel/contacts

	Slow action
1 NC/1 NO contact	<b>EEx 95 W 10/15</b> 
1 NC/1 NO contact with overlapping	<b>EEx 95 W UE</b> 
2 NC contacts	<b>EEx 95 W 20</b> 

### Contact variants: Switch travel/contacts

	Slow action
1 NC/1 NO contact	<b>EEx 95 R 10/15</b> 
1 NC/1 NO contact with overlapping	<b>EEx 95 R UE</b> 
2 NC contacts	<b>EEx 95 R 20</b> 

