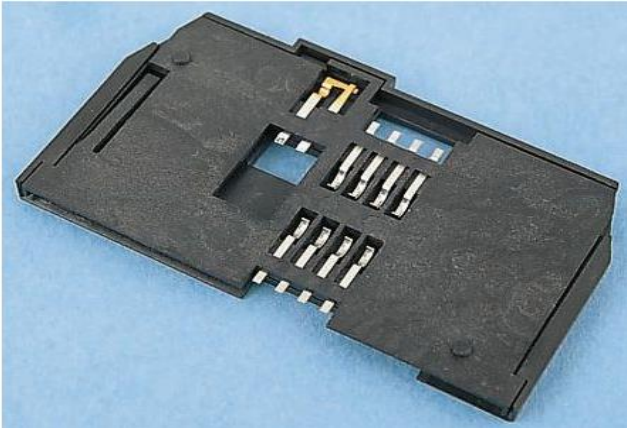


Professionally approved products. Datasheet

Compact Smartcard Connector

RS Stock number 252-585

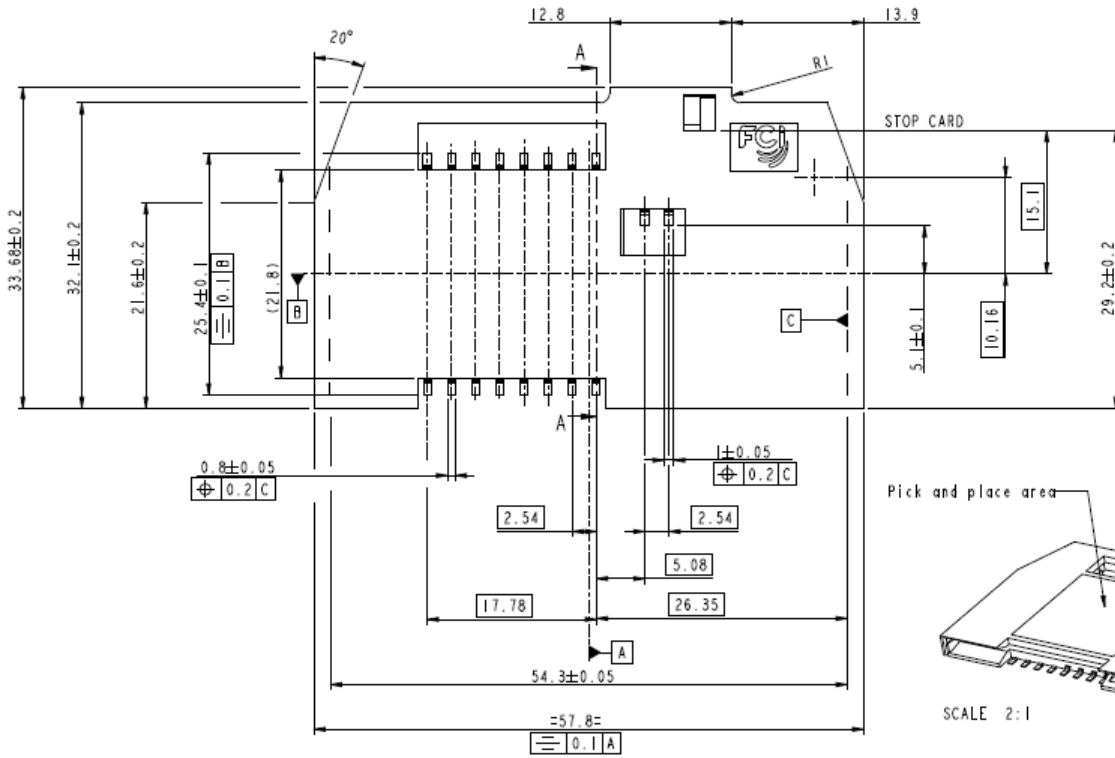


Specifications:

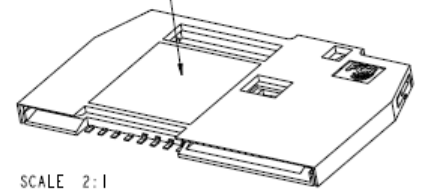
Thickness (mm):	3.6 mm (0.142 in.)
Height (Card entrance):	2.4 mm (0.094 in.)
Connector Family and Technology:	Sliding, Low Profile, High Cycle
Cover:	Yes
Number of contacts:	16
Positioning :	Pegs
Product Series:	P Series
Card Detection Switch:	Normally Open
Current rating:	10 micro amps min., 1A max.
Resistance (Contact):	<100 milli ohms
Resistance (Insulation):	>1000 M-ohms
Voltage rating:	1000V rms between Contact.
Voltage rating (Switch Open Contact):	>300V rms
Durability (Mating cycles):	100000 Cycles
Insertion force:	10N max.
Withdrawal Force:	3N min.
Contact force:	0.2N to 0.5N
Termination:	Surface Mount
Material (Contact):	Copper Alloy
Material (Housing):	Thermoplastic UL94 V-0
Plating (Pin):	Gold over Nickel
Temperature (Operating - range):	-40°C to +85°C
Most Popular Configuration:	Not Applicable
Packaging (Type):	Tray
Bezel (scoop):	No

Professionally approved products. Datasheet

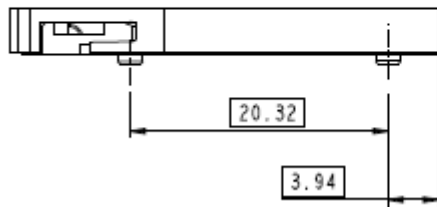
Dimensions – mm:



Pick and place area



SCALE 2:1



DESCRIPTION

SECTION A-A
SCALE 10:1

