



Part Number : [348978121](#)

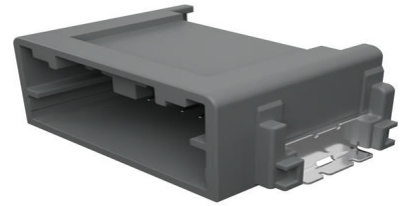
Product Description : Mini50 Unsealed Header, Right-Angle, SMT, Dual Row, 12 Circuits, Tin (Sn) Plating, Polarization Option B, Gray, Tape and Reel

Series Number : 34897

Status : Active

Product Category : PCB Headers and Receptacles

Packaging Alternative : [348979121](#) (Tube)



Documents & Resources

Drawings

[348978121_sd.pdf](#)

[PK-31301-786-001.pdf](#)

3D Models and Design Files

[STEP AP242](#)

[SOLIDWORKS](#)

[Creo](#)

[Symbol and Footprint \(Multi-Format\)](#)

Specifications

[AS-34791-020-CH-001.pdf](#)

[2065230000-AS-000.pdf](#)

[AS-34791-020-001.pdf](#)

[AS-34791-020-CH-001.pdf](#)

[AS-34791-020-FR-001.pdf](#)

[2065230000-AS-KR-000.pdf](#)

[PS-34791-020-001.pdf](#)

[2065230000-TS-000.pdf](#)

[347910020-TS-000.pdf](#)

Product Environment Compliance

Compliance

GADSL/IMDS	Compliant with Exemption 44; 34;
------------	----------------------------------

	33
China RoHS	per SJ/T 11365-2006
EU ELV	Compliant per 2000/53/EC
Low-Halogen Status	Low-Halogen per IEC 61249-2-21
REACH SVHC	Not Contained per D(2025)4165-DC (25 June 2025)
EU RoHS	Compliant per EU 2015/863

Compliance Statements

- EU RoHS
- REACH SVHC
- Low-Halogen

Industry Documents

- IPC 1752A Class C
- IPC 1752A Class D
- Molex Product Compliance Declaration
- IEC-62474
- chemSHERPA (xml)

Substances of Interest

- PFAS

EU RoHS Certificate of Compliance

Additional Product Compliance Information

Part Details

General

Status	Active
Category	PCB Headers and Receptacles
Series	34897
Description	Mini50 Unsealed Header, Right-Angle, SMT, Dual Row, 12 Circuits, Tin (Sn) Plating, Polarization Option B, Gray, Tape and Reel
Application	Automotive, Power, Signal, Wire-to-Board
Component Type	PCB Header
Product Name	Mini50
UPC	887191297477

Electrical

Current - Maximum per Contact	4.0A (for reference only)
Voltage - Maximum	14V (typical operating)

Physical

Breakaway	No
Circuits (Loaded)	12
Circuits (maximum)	12
Color - Resin	Gray
First Mate / Last Break	No
Glow-Wire Capable	No
Guide to Mating Part	No
Keying to Mating Part	Yes
Lock to Mating Part	Yes
Material - Metal	Brass
Material - Plating Mating	Tin
Material - Plating Termination	Tin
Material - Resin	SPS
Net Weight	2.635/g
Number of Rows	2
Orientation	Right Angle
Packaging Type	Embossed Tape on Reel
PCB Retention	Yes
Pitch - Mating Interface	2.00mm
Polarized to Mating Part	Yes
Polarized to PCB	Yes
Temperature Range - Operating	-40° to +100°C
Termination Interface Style	Surface Mount

Solder Process Data

Max-Duration	35
Lead-Free Process Capability	WAVE
Max-Cycle	1
Max-Temp	260

Mates With / Use With

Mates with Part(s)

Description	Part Number
Mini50 Unsealed Dual Row Receptacles	<u>206523</u>
Mini50 Unsealed Dual Row Receptacle Housings	<u>34824</u>

This document was generated on Sep 23, 2025