



# PLANETARY GEARHEAD

TRIDENT ENGINEERING LIMITED  
 Trident House, King Street Lane,  
 Winnersh, Wokingham,  
 Berkshire, RG41 5AS

## Plastic Version

Telephone: 0118 978 6444  
 Fax: 0118 977 6345  
 Email: sales@tridenteng.co.uk  
 www.tridenteng.co.uk

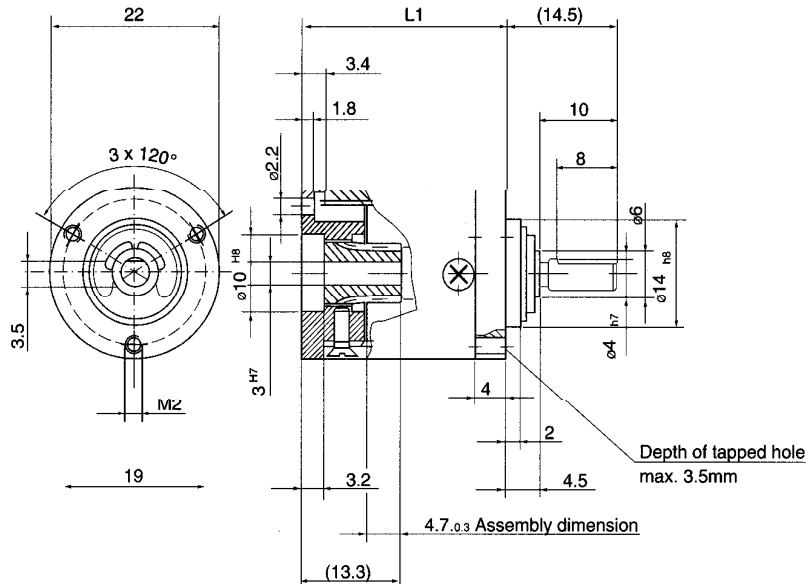
### GPP22. \_ \_ \_ \_

General data					Product combinations			
Planetary gearhead	straight teeth				2-22/02	(This catalogue)		
Bearing at output	sintered				} (API Motion Catalogue)			
Max. permissible axial load	30 N					22N_ _		
Max. permissible force press fits	150 N					22V_ _		
Recommended input speed	6,000 rpm					23V_ _		
Recommended temperature range	-15/+65 °C					26N_ _		
Number of stages:	1	2	3	4	28L_ _			
Max. radial load, 10 mm from flange	15 N	30 N	45 N	60 N	28LT_ _			
Max backlash	1.5°	2.0°	2.5°	3.0°				
Efficiency	80%	75%	70%	65%				

Gearhead Order No	Reduction	Number of stages	Maximum torque continuous [Nm]	Maximum torque intermittent [Nm]	Sense of direction	Weight [g]	L1 [mm]
GPP22.0004	4:1	1	0.2	0.2	=	41	27.1
GPP22.0014	14:1	2	0.4	0.4	=	42	35.35
GPP22.0025	25:1	2	0.4	0.4	=	52	35.35
GPP22.0051	51:1	3	0.6	0.6	=	63	43.55
GPP22.0093	93:1	3	0.6	0.6	=	63	43.55
GPP22.0169	169:1	3	0.6	0.6	=	63	43.55
GPP22.0189	189:1	4	0.7	0.7	=	74	51.30
GPP22.0344	344:1	4	0.7	0.7	=	74	51.30
GPP22.0626	626:1	4	0.7	0.7	=	74	51.30
GPP22.1140	1140:1	4	0.7	0.7	=	74	51.30

The ratios shown are stock ratios, there are many more options available - please contact our technical department for more details.



#### Notes



# PLANETARY GEARHEAD

TRIDENT ENGINEERING LIMITED  
 Trident House, King Street Lane,  
 Winnersh, Wokingham,  
 Berkshire, RG41 5AS

Telephone: 0118 978 6444

Fax: 0118 977 6345

Email: sales@tridenteng.co.uk

www.tridenteng.co.uk

## GP22. \_ \_ \_ \_

### General data

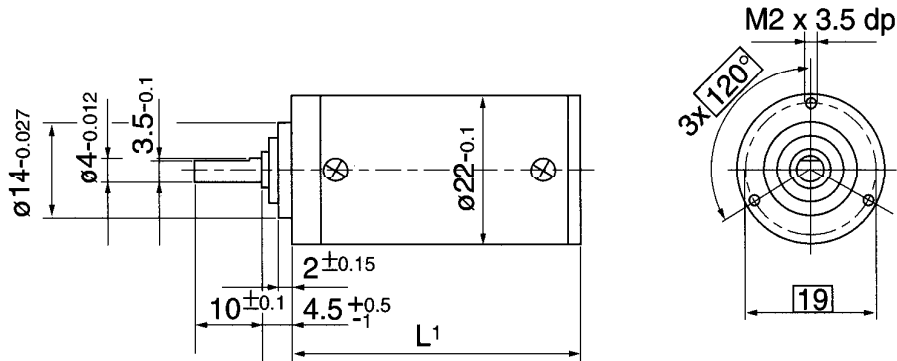
Planetary gearhead	straight teeth			
Bearing at output	ball bearing			
Radial play, 10mm from flange	max. 0.10		mm	
Axial play	max. 0.7		mm	
Max. permissible axial load	30		N	
Max. permissible force press fits	150		N	
Average backlash no load per stage	<0.9		°	
Recommended input speed	<4000		rpm	
Recommended temperature range	-15/+65		°C	
Number of stages:	1	2	3	4
Max. radial load, 10 mm from flange	15 N	30 N	45 N	60 N
Efficiency	80%	75%	70%	60%

### Product combinations

2-22/02	(This catalogue)
22N_ _ _	} (API Motion Catalogue)
22V_ _ _	
23V_ _ _	
26N_ _ _	
28L_ _ _	
28LT_ _ _	

Gearhead Order No	Reduction	Number of stages	Maximum torque continuous [Nm]	Maximum torque intermittent [Nm]	Sense of direction	Weight [g]	L1 [mm]
GP22.0004	4:1	1	0.2	0.2	=	33	27.1
GP22.0014	14:1	2	0.4	0.4	=	43	35.35
GP22.0025	25:1	2	0.4	0.4	=	43	35.35
GP22.0051	51:1	3	0.6	0.6	=	54	43.55
GP22.0093	93:1	3	0.6	0.6	=	54	43.55
GP22.0169	169:1	3	0.6	0.6	=	54	43.55
GP22.0189	189:1	4	0.7	0.7	=	65	51.80
GP22.0344	344:1	4	0.7	0.7	=	65	51.80
GP22.0626	626:1	4	0.7	0.7	=	65	51.80
GP22.1140	1140:1	4	0.7	0.7	=	65	51.80

The ratios shown are stock ratios, there are many more options available - please contact our technical department for more details.



### Notes