

REVISIONS						
ZONE	REV.	ECN	DESCRIPTION	BY	DATE	APPROVED
ALL	A		PRELIMINARY RELEASE	KAW	07/16/2019	AYZ
1-D6 2-D5 2-E2	B		"GXT" WAS "GOLD OVER PALLADIUM-NICKEL" (6.97) WAS (6.91) ADDED POLYIMIDE (KAPTON) TAPE	KAW	09/22/2019	AYZ
2-B4 2-B6 2-E2	C		(6.45) WAS (6.35) 1.1 MIN WAS (1.24) (4.10) WAS (5.10)	KAW	03/09/2020	AYZ
SHT 2	D		REPLACED REFERENCE DIMENSIONS WITH TOLERANCED DIMENSIONS	KAW	11/05/2020	

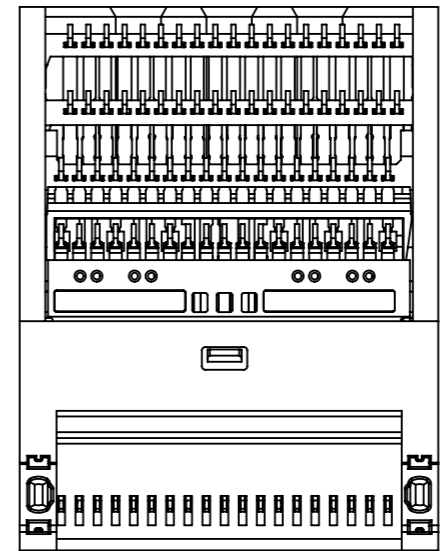
AMPHENOL PART NUMBER CONFIGURATION

UE36-A10X5-X000T

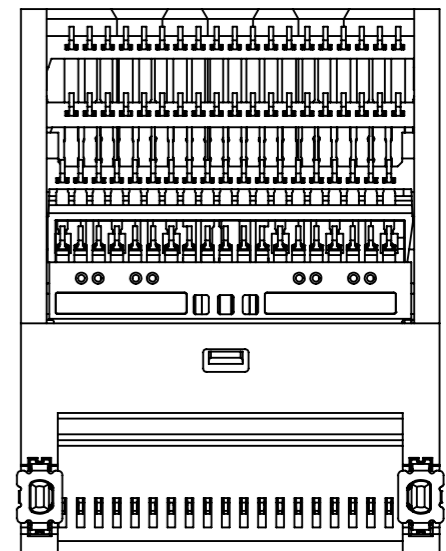
TERMINATION OPTION
1 = STANDARD SINGLE SIDE
7 = SOLDER RINGS

PACKAGING
T = TAPE AND REEL

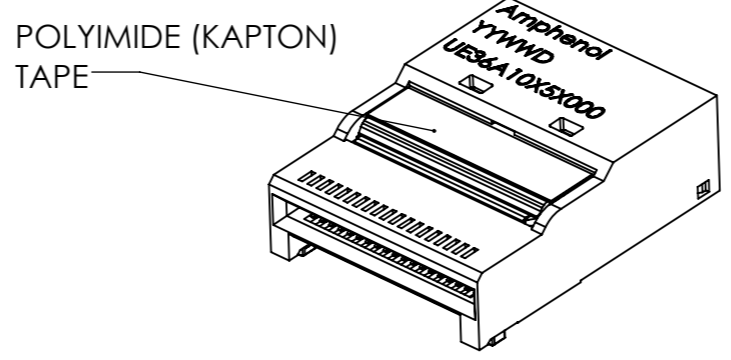
PLATING OPTION
2 = 0.76µm GXT MIN. AT MATING AREA
2.54µm-6.35µm MATTE TIN TERMINATION
3 = 0.76µm GOLD MIN. AT MATING AREA
2.54µm-6.35µm MATTE TIN TERMINATION
6 = 0.38µm GOLD MIN. AT MATING AREA
2.54µm-6.35µm MATTE TIN TERMINATION



**UE36-A1015-X000
(STANDARD SINGLE-SIDE
MOUNTING)**



**UE36-A1075-X000
(WITH SOLDER RINGS
FOR BELLY TO BELLY
MOUNTING)**



**ISOMETRIC VIEW
SCALE 2:1**

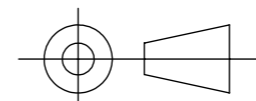
NOTES:

- MATERIAL:** SOLDER PROCESS REFLOW COMPATIBLE LCP, UL 94 V-0
CONTACTS: COPPER ALLOY. SEE PART NUMBER TREE FOR PLATING DETAILS
- RoHS COMPLIANT.
- PERFORMANCE:** 0.50A MAX. SIGNAL CONTACTS
1.0A MAX. POWER CONTACTS
MECHANICAL: 100 MATING CYCLES MIN.
- COMPLIES WITH QSFP-DD MSA.
- SOLDER LEAD COPLANARITY IS INSPECTED WITH RESPECT TO A BEST-FIT PLANE ESTABLISHED BY ALL 76 LEADS.

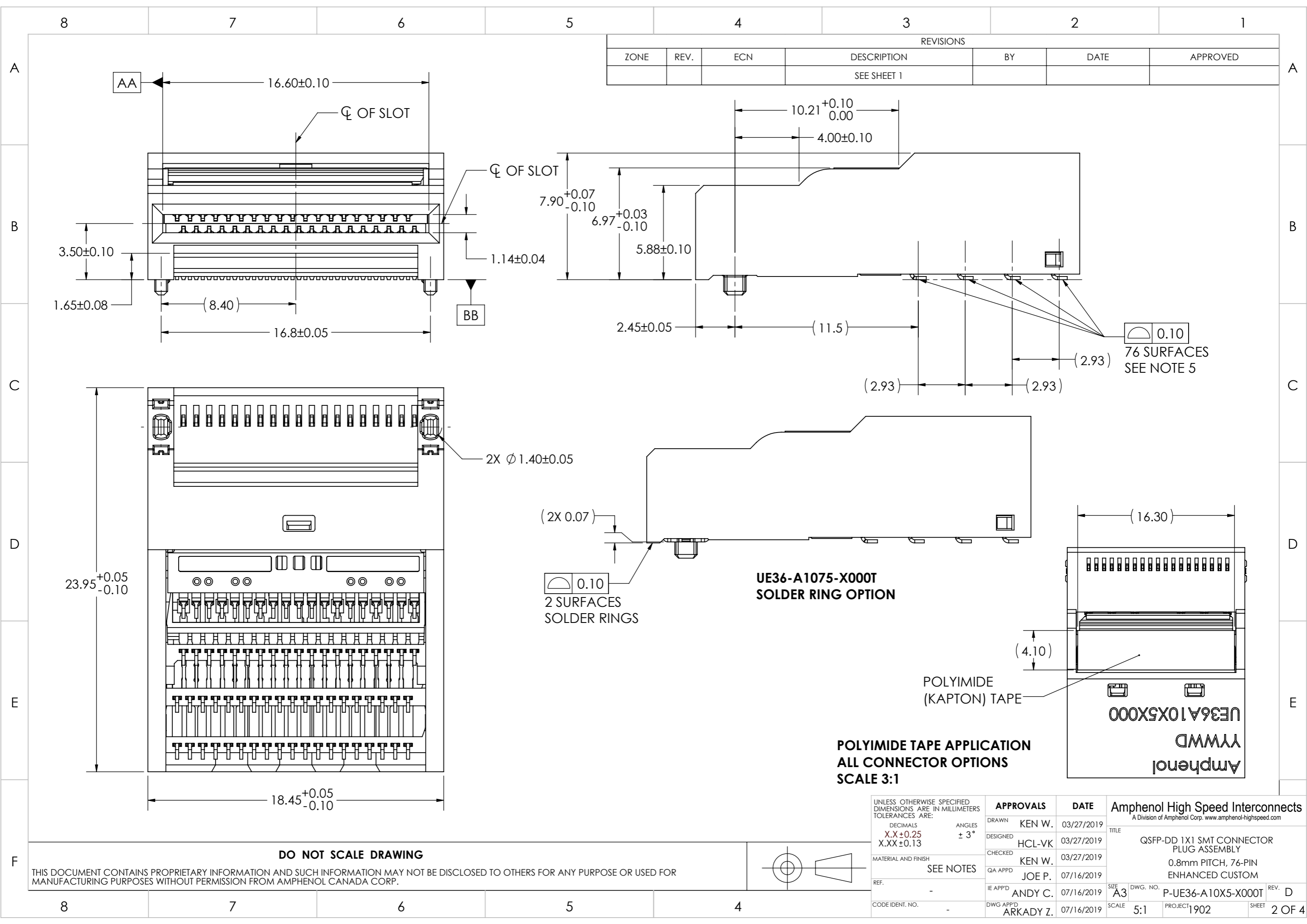


DO NOT SCALE DRAWING

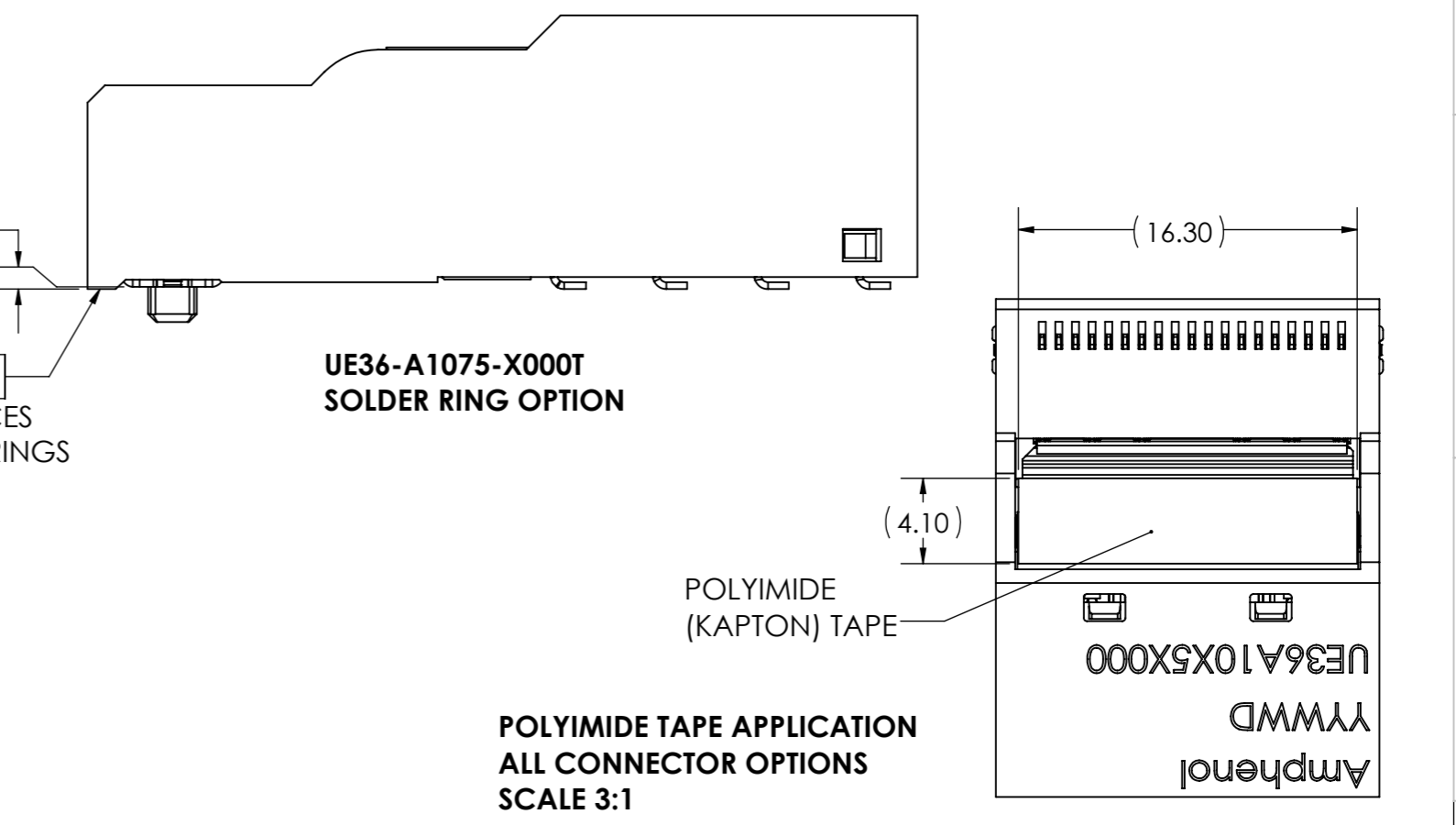
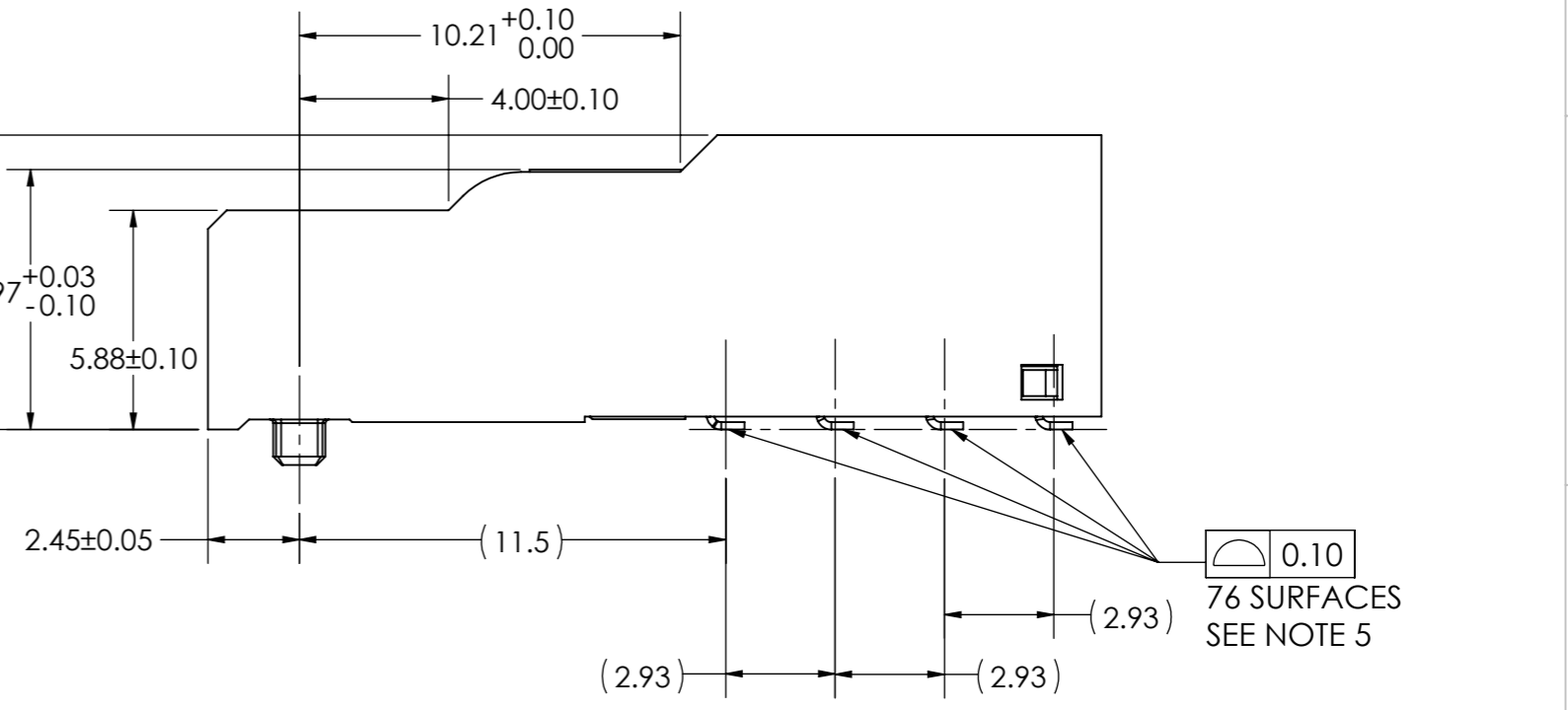
THIS DOCUMENT CONTAINS PROPRIETARY INFORMATION AND SUCH INFORMATION MAY NOT BE DISCLOSED TO OTHERS FOR ANY PURPOSE OR USED FOR MANUFACTURING PURPOSES WITHOUT PERMISSION FROM AMPHENOL CANADA CORP.



UNLESS OTHERWISE SPECIFIED DIMENSIONS ARE IN MILLIMETERS TOLERANCES ARE:		APPROVALS		DATE		Amphenol High Speed Interconnects A Division of Amphenol Corp. www.amphenol-highspeed.com	
DECIMALS	ANGLES	DRAWN	KEN W.	03/27/2019	TITLE		
X.X ± 0.25	± 3°	DESIGNED	HCL-VK	03/27/2019	QSFP-DD 1X1 SMT CONNECTOR PLUG ASSEMBLY		
X.XX ± 0.13		CHECKED	KEN W.	03/27/2019	0.8mm PITCH, 76-PIN ENHANCED CUSTOM		
MATERIAL AND FINISH		QA APP'D	JOE P.	07/16/2019	SIZE	DWG. NO.	REV.
SEE NOTES		IE APP'D	ANDY C.	07/16/2019	A3	P-UE36-A10X5-X000T	D
REF.	-	DWG APP'D	ARKADY Z.	07/16/2019	SCALE	PROJECT	SHEET
CODE IDENT. NO.	-				5:1	1902	1 OF 4



REVISIONS						
ZONE	REV.	ECN	DESCRIPTION	BY	DATE	APPROVED
			SEE SHEET 1			

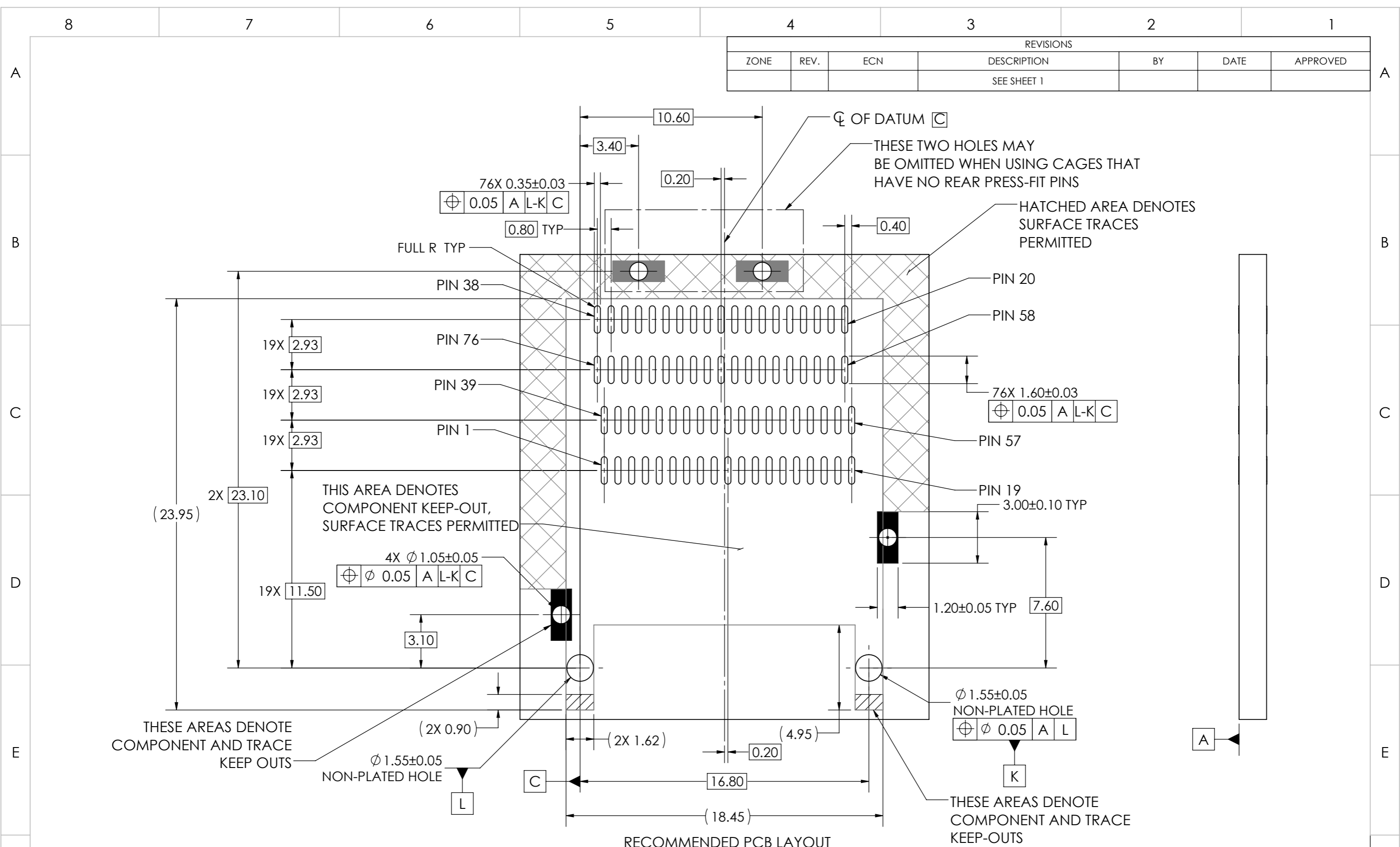


UNLESS OTHERWISE SPECIFIED DIMENSIONS ARE IN MILLIMETERS TOLERANCES ARE:		APPROVALS		DATE		Amphenol High Speed Interconnects	
DECIMALS	ANGLES	DRAWN	KEN W.	03/27/2019	TITLE QSFP-DD 1X1 SMT CONNECTOR PLUG ASSEMBLY 0.8mm PITCH, 76-PIN ENHANCED CUSTOM SIZE A3 DWG. NO. P-UE36-A10X5-X000T REV. D SCALE 5:1 PROJECT 1902 SHEET 2 OF 4		
X.X±0.25	± 3°	DESIGNED	HCL-VK	03/27/2019			
X.XX±0.13		CHECKED	KEN W.	03/27/2019			
MATERIAL AND FINISH		QA APPD	JOE P.	07/16/2019			
SEE NOTES		IE APPD	ANDY C.	07/16/2019			
REF.	-	DWG APPD	ARKADY Z.	07/16/2019			
CODE IDENT. NO.	-						

DO NOT SCALE DRAWING

THIS DOCUMENT CONTAINS PROPRIETARY INFORMATION AND SUCH INFORMATION MAY NOT BE DISCLOSED TO OTHERS FOR ANY PURPOSE OR USED FOR MANUFACTURING PURPOSES WITHOUT PERMISSION FROM AMPHENOL CANADA CORP.

REVISIONS						
ZONE	REV.	ECN	DESCRIPTION	BY	DATE	APPROVED
SEE SHEET 1						

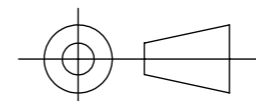


**RECOMMENDED PCB LAYOUT
SINGLE-SIDED MOUNTING**

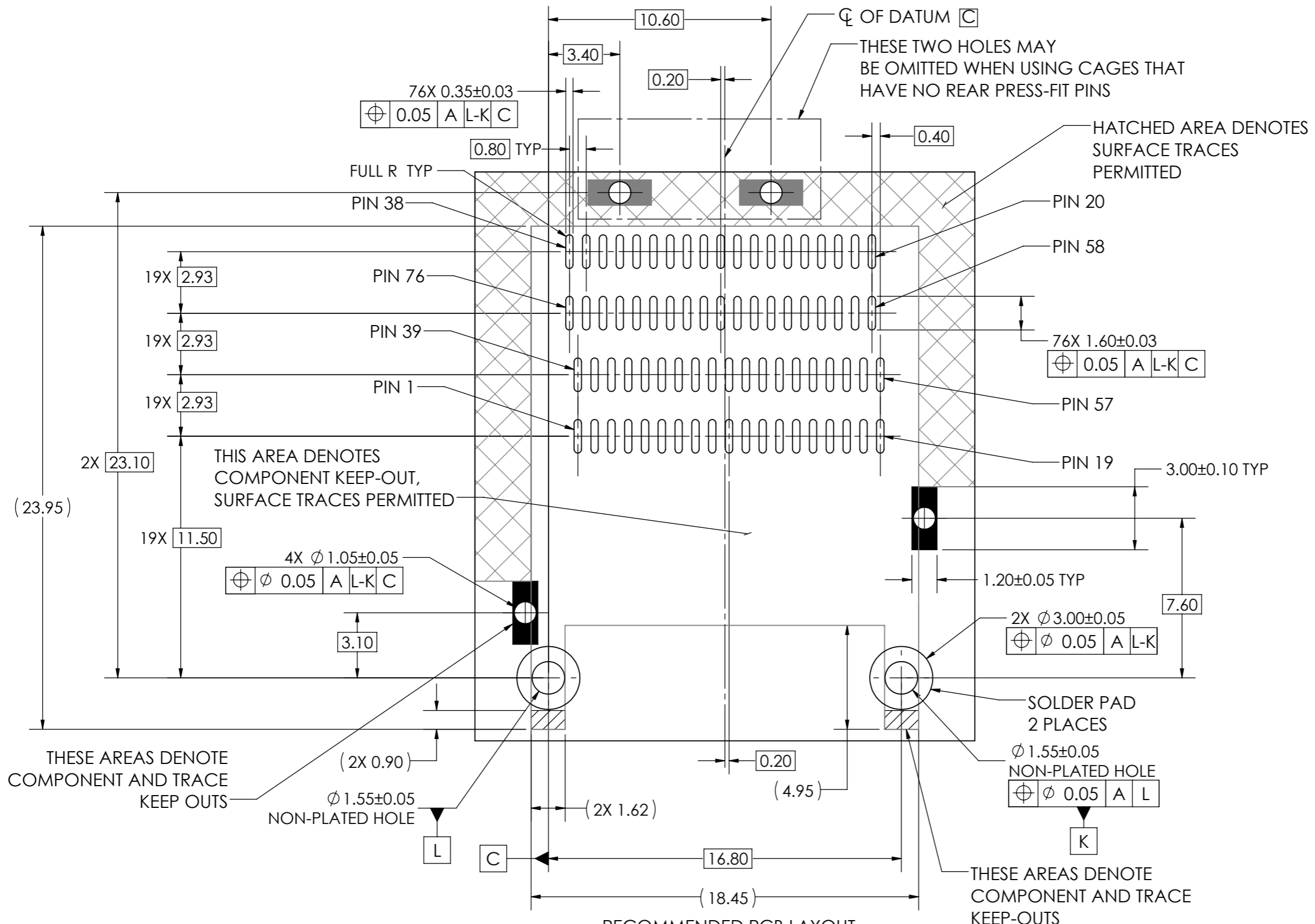
UNLESS OTHERWISE SPECIFIED DIMENSIONS ARE IN MILLIMETERS TOLERANCES ARE:	DECIMALS	ANGLES	APPROVALS	DATE	Amphenol High Speed Interconnects A Division of Amphenol Corp. www.amphenol-highspeed.com
	X.X±0.25 X.XX±0.13	± 3°			
MATERIAL AND FINISH	SEE NOTES		DRAWN	KEN W.	03/27/2019
REF.	-		DESIGNED	HCL-VK	03/27/2019
CODE IDENT. NO.	-		CHECKED	KEN W.	03/27/2019
			QA APP'D	JOE P.	07/16/2019
			IE APP'D	ANDY C.	07/16/2019
			DWG APP'D	ARKADY Z.	07/16/2019
SIZE	A3	DWG. NO.	P-UE36-A10X5-X000T		
SCALE	5:1	PROJECT	1902		
		SHEET	3 OF 4		

DO NOT SCALE DRAWING

THIS DOCUMENT CONTAINS PROPRIETARY INFORMATION AND SUCH INFORMATION MAY NOT BE DISCLOSED TO OTHERS FOR ANY PURPOSE OR USED FOR MANUFACTURING PURPOSES WITHOUT PERMISSION FROM AMPHENOL CANADA CORP.



REVISIONS						
ZONE	REV.	ECN	DESCRIPTION	BY	DATE	APPROVED
SEE SHEET 1						



**RECOMMENDED PCB LAYOUT
BELLY-TO-BELLY MOUNTING
WITH SOLDER RINGS**

UNLESS OTHERWISE SPECIFIED DIMENSIONS ARE IN MILLIMETERS TOLERANCES ARE:

DECIMALS	ANGLES
X.X ± 0.25	± 3°
X.XX ± 0.13	

MATERIAL AND FINISH: SEE NOTES

REF: -

CODE IDENT. NO: -

APPROVALS		DATE
DRAWN	KEN W.	03/27/2019
DESIGNED	HCL-VK	03/27/2019
CHECKED	KEN W.	03/27/2019
QA APP'D	JOE P.	07/16/2019
IE APP'D	ANDY C.	07/16/2019
DWG APP'D	ARKADY Z.	07/16/2019

Amphenol High Speed Interconnects A Division of Amphenol Corp. www.amphenol-highspeed.com		
TITLE: QSFP-DD 1X1 SMT CONNECTOR PLUG ASSEMBLY		
0.8mm PITCH, 76-PIN ENHANCED CUSTOM		
SIZE: A3	DWG. NO.: P-UE36-A10X5-X000T	REV.: D
SCALE: 5:1	PROJECT: 1902	SHEET: 4 OF 4

DO NOT SCALE DRAWING

THIS DOCUMENT CONTAINS PROPRIETARY INFORMATION AND SUCH INFORMATION MAY NOT BE DISCLOSED TO OTHERS FOR ANY PURPOSE OR USED FOR MANUFACTURING PURPOSES WITHOUT PERMISSION FROM AMPHENOL CANADA CORP.

