

RC-16P1N120000 - Contact insert

1600509

<https://www.phoenixcontact.com/in/products/1600509>



Please be informed that the data shown in this PDF document is generated from our online catalog. Please find the complete data in the user documentation. Our general terms of use for downloads are valid.



Contact insert, M23, number of positions: 16, contact connection type: Pin, Solder cup, series: NC, RC, RM, TU, UC, Alternative product in accordance with RoHS II without Exemption 6c (Pb < 0.1 %) item no.: 1241213

Commercial data

Item number	1600509
Packing unit	10 pc
Minimum order quantity	10 pc
Sales key	ABR
Product key	ABRAFU
GTIN	4046356230421
Weight per piece (including packing)	10.36 g
Weight per piece (excluding packing)	10.36 g
Customs tariff number	85366990
Country of origin	DE

RC-16P1N120000 - Contact insert

1600509

<https://www.phoenixcontact.com/in/products/1600509>



Technical data

Product properties

Product type	Contact insert
Series	NC
	RC
	RM
	TU
	UC
Application	Signal
Number of positions	16
Connection profile	16
Coding	N
Thread type	M23

Electrical properties

Contact

Contact diameter	1 mm
Min. cross section	0.08 mm ²
Max. cross section	1 mm ²
Max. current	8 A
Nominal voltage U _N	48 V AC 74 V DC
Overvoltage category	III
Degree of pollution	3
Rated surge voltage	1.5 kV

Connection data

Connection method	Solder cup
-------------------	------------

Material specifications

Insulator material	PBT
Contact material	CuZn
Contact surface	Nickel-plated, gold coating

Connector

Direction of rotation	Standard
-----------------------	----------

Mechanical properties

Mechanical data

Insertion/withdrawal cycles	50
-----------------------------	----

RC-16P1N120000 - Contact insert

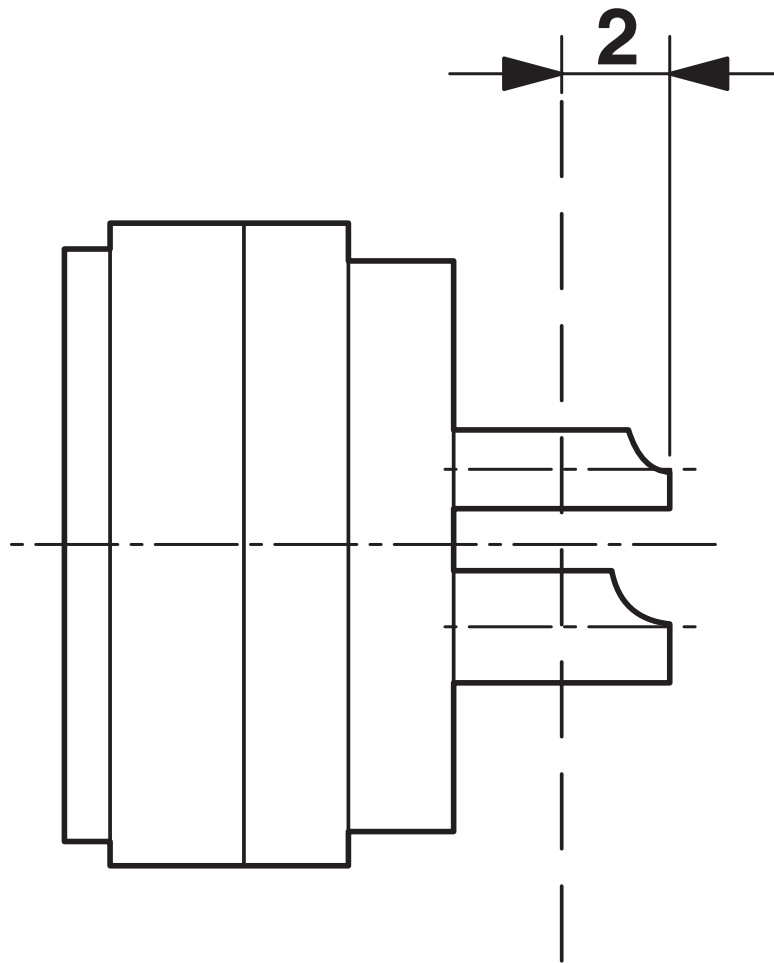
1600509

<https://www.phoenixcontact.com/in/products/1600509>



Drawings

Schematic diagram



Dimensional drawing

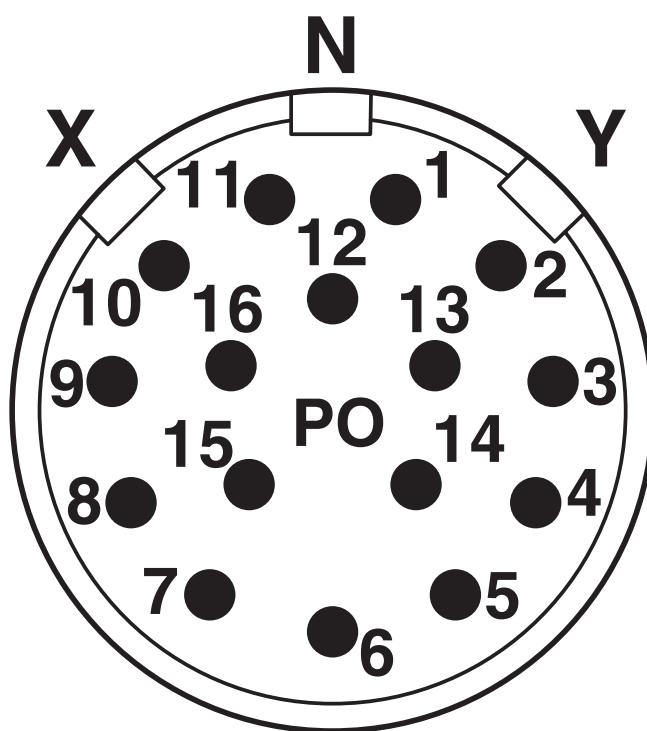
RC-16P1N120000 - Contact insert

1600509

<https://www.phoenixcontact.com/in/products/1600509>



Schematic diagram



Connector pin assignment

RC-16P1N120000 - Contact insert



1600509

<https://www.phoenixcontact.com/in/products/1600509>

Classifications

ECLASS

ECLASS-13.0	27440223
-------------	----------

ETIM

ETIM 9.0	EC003557
----------	----------

UNSPSC

UNSPSC 21.0	39121400
-------------	----------

RC-16P1N120000 - Contact insert

1600509

<https://www.phoenixcontact.com/in/products/1600509>



Environmental product compliance

EU RoHS

Fulfills EU RoHS substance requirements	Yes
Exemption	6(c)

China RoHS

Environment friendly use period (EFUP)	EFUP-50
	An article-related China RoHS declaration table can be found in the download area for the respective article under "Manufacturer declaration". For all articles with EFUP-E, no China RoHS declaration table issued and required.

EU REACH SVHC

REACH candidate substance (CAS No.)	Lead(CAS: 7439-92-1)
SCIP	73a4a064-d857-4168-97f0-4289676d402b

Phoenix Contact 2025 © - all rights reserved

<https://www.phoenixcontact.com>

PHOENIX CONTACT (I) Pvt. Ltd.

A-58/2, Okhla Industrial Area, Phase - II, New Delhi-110 020

+91.1275.71420

info@phoenixcontact.co.in