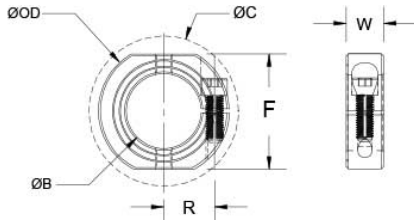




OF-MCL-12-F

Ruland OF-MCL-12-F, 12mm Shaft Collar With OD Flats And Holes, Black Oxide Steel, One-Piece Clamp Style, 28mm OD, 11mm Width



**Additional hardware NOT included*

Description

Ruland OF-MCL-12-F is a one-piece shaft collar with 12mm bore, 28mm OD, and 11mm width. OF-MCL-12-F has OD flats and tapped holes for mounting shaft collars to each other or adjacent components. The clamp style design does not mar the shaft, is easy to remove, and is indefinitely adjustable. OF-MCL-12-F is commonly used for guiding, spacing, stopping, mounting, and component alignment. Equipment manufacturers benefit from the tightly controlled face to bore perpendicularity (TIR of $\leq .05\text{mm}$). Perpendicularity is critical for alignment when the shaft collar is used as a load bearing face, mechanical stop, or for mounting components such as gears or bearings. Proprietary processes have been developed by Ruland to maintain superior fit, finish, and holding power. OF-MCL-12-F is stamped with the Ruland name and bore size for ease of identification. Forged screws test beyond DIN 912 12.9 standards to ensure maximum holding power. OF-MCL-12-F is machined from solid bar stock to a fine burr free finish and sourced exclusively from North American mills. Ruland uses 1215 lead-free steel with a proprietary black oxide finish that produces a fine glossy finish while increasing holding power and resisting corrosion. It is RoHS2 and REACH compliant and manufactured in our Marlborough, MA factory under strict controls using proprietary processes.

Product Specifications

| | | | |
|-------------------------------|--|---------------------------------|---|
| Bore B | 12 mm | Bore Tolerance | +0.050 mm / +.012 mm |
| Outer Diameter OD | 28 mm | Clearance Diameter C MAX | 32.0 mm |
| Width W | 11 mm | Width Tolerance | +0.076 mm / -.254 mm |
| Threaded Mounting Hole | M4 | Distance Across Flats | 24 mm |
| Forged Clamp Screw | M4x12 | Screw Material | Alloy Steel |
| Hex Wrench Size | 3.0 mm | Screw Finish | Black Oxide |
| Seating Torque | 4.6 Nm | Screw Location R | 10.01 mm |
| Number of Screws | 1 ea | Material Specification | 1215 Carbon Steel Bar |
| Temperature | -40°F to 350°F -40°C to 176°C | Finish Specification | Hot Process Black Oxide, Impregnated with Naphthenic Oil, Centrifugally Dried |
| Country of Origin | USA | Weight (lbs.) | 0.1000 |
| Note 1 | Additional mounting hardware not included. | | |