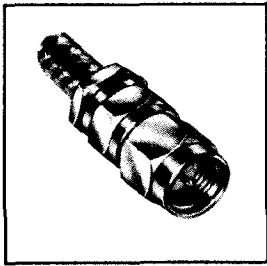


OSM (SMA)

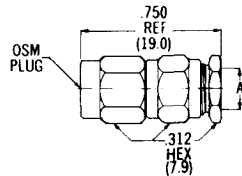
For Flexible Cable

This series of cable clamp attachment connectors is the commercial alternate to the SMA type connectors to flexible cable per MIL-C-39012 Category A Field Replaceable units (no special tools required).

Flexible Cable • Clamp Attachment

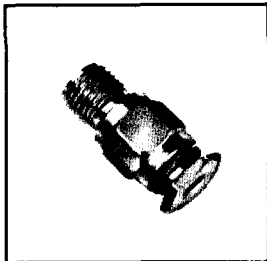


**Straight Cable Plug
Captured Contact**

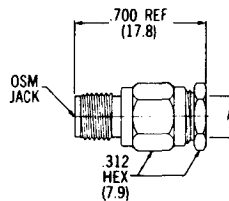


Cable	RG 55/U, 58, 141, 142, 223, 303	RG 174/U, 188, 316	RG 180/U, 195
Part Number	2001-7141-02	2001-7188-02	2001-7195-02
Dim. A	Inches (mm) .220 Dia. (5.6)	Inches (mm) .116 Dia. (2.9)	Inches (mm) .160 Dia. (4.1)

Finish: Passivated stainless steel. For gold plate, change the Part Number suffix from -02 to -00. Refer to Appendix for Coaxial Cable Characteristics. Refer to recommended assembly tools in Tool Section.

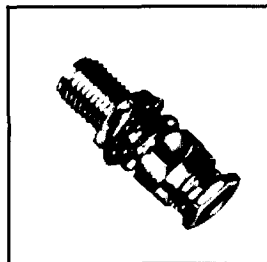


**Straight Cable Jack
Captured Contact**

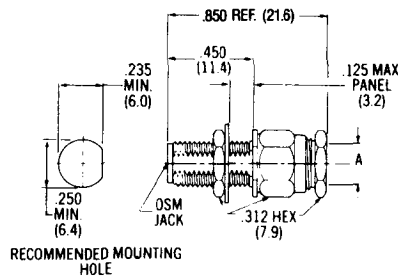


Cable	RG 55/U, 58, 141, 142, 223, 303	RG 174/U, 188, 316	RG 180/U, 195
Part Number	2002-7141-02	2002-7188-02	2002-7195-02
Dim. A	Inches (mm) .220 Dia. (5.6)	Inches (mm) .116 Dia. (2.9)	Inches (mm) .160 Dia. (4.1)

Finish: Passivated stainless steel. For gold plate, change the Part Number suffix from -02 to -00. Refer to Appendix for Coaxial Cable Characteristics. Refer to recommended assembly tools in Tool Section.



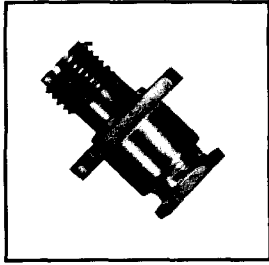
**Bulkhead Feedthrough Cable Jack
Captured Contact**



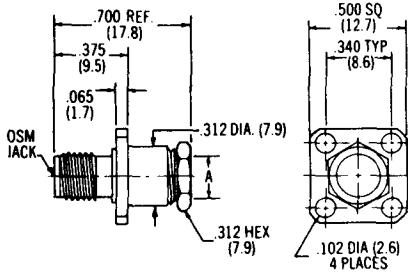
Cable	RG 55/U, 58, 141, 142, 223, 303	RG 174/U, 188, 316	RG 180/U, 195
Part Number	2004-7141-02	2004-7188-02	2004-7195-02
Dim. A	Inches (mm) .220 Dia. (5.6)	Inches (mm) .116 Dia. (2.9)	Inches (mm) .160 Dia. (4.1)

Finish: Passivated stainless steel. For gold plate, change the Part Number suffix from -02 to -00. Refer to Appendix for Coaxial Cable Characteristics. Refer to recommended assembly tools in Tool Section.

Flexible Cable • Clamp Attachment

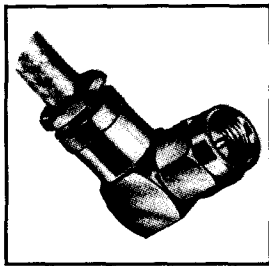


Flange Mount Cable Jack
Captured Contact

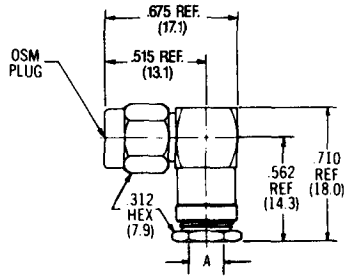


Cable	RG 55/U, 58, 141, 142, 223, 303	RG 174/U, 188, 316	RG 180/U, 195
Part Number	2006-7141-02	2006-7188-02	2006-7195-02
Dim. A	Inches (mm) .220 Dia. (5.6)	Inches (mm) .116 Dia. (2.9)	Inches (mm) .160 Dia. (4.1)

Finish: Passivated stainless steel. For gold plate, change the Part Number suffix from -02 to -00.
Refer to Appendix for Coaxial Cable Characteristics.
Refer to recommended assembly tools in Tool Section.



Right Angle Cable Plug*
DC-12.4 GHz



Cable	RG 55/U, 58, 141, 142, 223, 303	RG 174/U, 188, 316	RG 180/U, 195
Part Number	2007-7141-02	2007-7188-02	2007-7195-02
Dim. A	Inches (mm) .220 Dia. (5.6)	Inches (mm) .116 Dia. (2.9)	Inches (mm) .160 Dia. (4.1)

Finish: Passivated stainless steel. For gold plate, change the Part Number suffix from -02 to -00.
Refer to Appendix for Coaxial Cable Characteristics.
Refer to recommended assembly tools in Tool Section.
*Contact captivation per U.S. patent number 3,292,117.