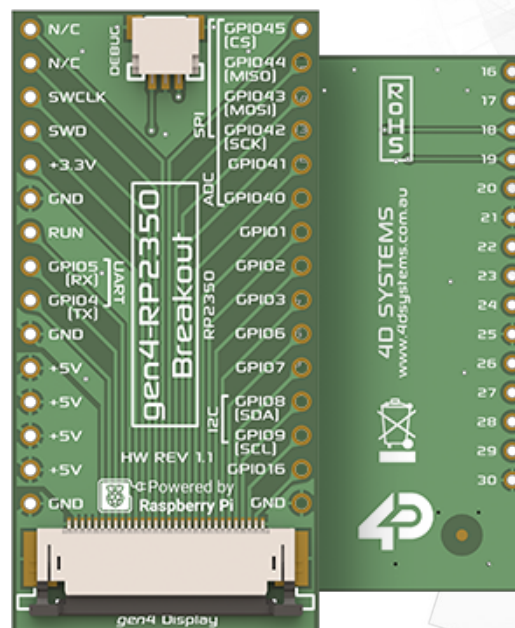


gen4-RP2350-Breakout

The gen4-RP2350-Breakout board is compatible with all gen4-RP2350 Series display modules and is a quick and easy way to access the display I/O and connect to a host board or breadboard.

The board is straightforward; it breaks out the 30 signals from the FFC connector into 30 pads, 15 of which are down each side. It is breadboard compatible if desired using header pins (not included), which can be soldered for ease of connections or simply soldered wires directly (not included). It connects to the display via 30-way (top contact) FFC cable (not included).



Datasheet

Revision 1.0

Copyright © 2023 4D Systems

Content may change at any time. Please refer to the resource centre for latest documentation.