

ES2000-NO.4-B7-0-50MM

✓ ACTIVE

RAYCHEM | RAYCHEM ES2000

TE Internal #: 130599P011

Heat Shrink Tubing, Black, 4:1, Dual Wall Tubing, Shrinks To 4.45 mm [.175 in], Irradiated Modified Polyolefin, RAYCHEM ES2000

[View on TE.com >](#)



Heat Shrink Tubing



Tubing Product Type: **Heat Shrink Tubing**

Primary Product Color: **Black**

Shrink Ratio: **4:1**

Wall Type: **Dual Wall**

Recovered Inside Diameter (Max): **4.45 mm [.175 in]**

Features

Product Type Features

Tubing Product Type	Heat Shrink Tubing
Wall Type	Dual Wall

Electrical Characteristics

Operating Voltage (Max)	.6 kV
-------------------------	-------

Body Features

Fluid Type	Brake Fluid, Diesel Fuel, Engine Cleaner, Engine Coolant, Gasoline, Lubricating Oil, Transmission Fluid, Water, Windshield Washer Fluid
Primary Product Color	Black
Shrink Ratio	4:1
Primary Product Material	Irradiated Modified Polyolefin
Flexibility	Semi-Rigid

Dimensions

Recovered Wall Thickness (Nominal)	2.41 mm[.095 in]
Product Length	50 mm[1.969 in]
Recovered Wall Thickness (Tolerance)	2.41 mm[.095 in]
Recovered Inside Diameter (Max)	4.45 mm[.175 in]
Expanded Inside Diameter (Min)	17.78 mm[.7 in]



Usage Conditions

Resistance Properties	Immersion Protection, Moisture
Shrink Temperature (Min)	110 °C
Tubing Flammability Type	Flame-Retardant
Operating Temperature Range	-40 – 130 °C
Recovery Temperature	135 °C

Operation/Application

Mechanical Resistance	Abrasion, Fluids, Mechanical Damage, Strain Relief
-----------------------	--

Product Availability

Applicable Region	Global
-------------------	--------

Packaging Features

Packaging Method	Piece
------------------	-------

Other

Meets Low Outgassing Requirements	No
Product Source	China, Czech Republic

Product Compliance

For compliance documentation, visit the product page on TE.com>

EU RoHS Directive 2011/65/EU	Compliant
EU ELV Directive 2000/53/EC	Compliant
China RoHS 2 Directive MIIT Order No 32, 2016	No Restricted Materials Above Threshold
EU REACH Regulation (EC) No. 1907/2006	Current ECHA Candidate List: JAN 2025 (247) Candidate List Declared Against: JAN 2025 (247) Does not contain REACH SVHC
Halogen Content	Not Low Halogen - contains Br or Cl > 900 ppm.
Solder Process Capability	Not applicable for solder process capability

Product Compliance Disclaimer

This information is provided based on reasonable inquiry of our suppliers and represents our current actual knowledge based on the information they provided. This information is subject to change. The part numbers that TE has identified as EU RoHS compliant have a maximum concentration of 0.1% by weight in homogenous materials for lead, hexavalent chromium, mercury, PBB, PBDE, DBP, BBP, DEHP, DIBP, and 0.01% for cadmium, or qualify for an exemption to these limits as defined in the Annexes of Directive 2011/65/EU (RoHS2). Finished electrical and electronic equipment products will be CE marked as required by Directive 2011/65/EU. Components may not be CE marked. Additionally, the part

ES2000-NO.4-B7-0-50MM

Heat Shrink Tubing, Black, 4:1, Dual Wall Tubing, Shrinks To 4.45 mm [.175 in], Irradiated Modified Polyolefin, RAYCHEM ES2000



numbers that TE has identified as EU ELV compliant have a maximum concentration of 0.1% by weight in homogenous materials for lead, hexavalent chromium, and mercury, and 0.01% for cadmium, or qualify for an exemption to these limits as defined in the Annexes of Directive 2000/53/EC (ELV). Regarding the REACH Regulation, the information TE provides on SVHC in articles for this part number is based on the latest European Chemicals Agency (ECHA) ‘Guidance on requirements for substances in articles’ posted at this URL: <https://echa.europa.eu/guidance-documents/guidance-on-reach>

Compatible Parts

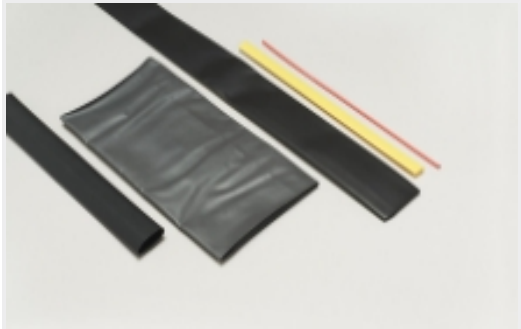


TE Part # EG1114-000
CV1981-ST-230V1600W-EU

Also in the Series | RAYCHEM ES2000



Dual Wall Tubing(125)



Heat Shrink Tubing(126)

Customers Also Bought



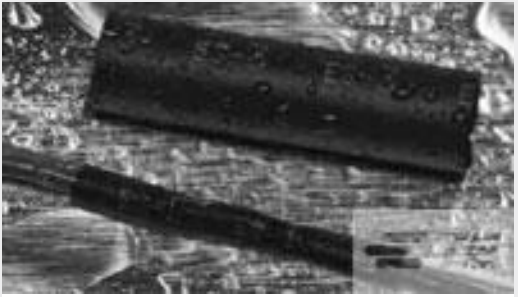
TE Part #1977740-2
MPS103FPC PSHBTN SPDT MMNTRY



TE Part #537637P056
SCT-NO.3-E3-0-40MM



TE Part #829131P037
ES2000-NO.1-C1-0-80MM



TE Part #121397P043
ES2000-NO.3-B8-0-40MM



TE Part #130599P010
ES2000-NO.4-B7-0-40MM



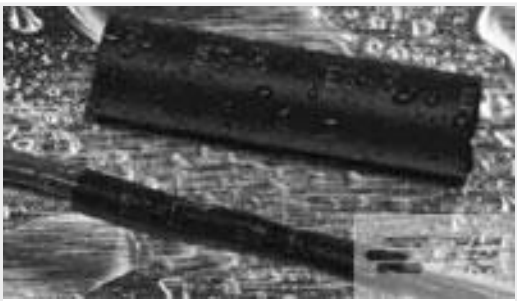
TE Part #350582-000
ES2000-NO.3-B8-0-35MM



TE Part #063725P016
ES2000-NO.2-B9-0-60MM



TE Part #4-1437559-6
MTM106DPC=SW TOG SHORT LEVER P



TE Part #063725P034
[ES2000-NO.2-B9-0-35MM](#)



TE Part #861021-000
[IR-1900-TIMING-BELT](#)

Documents

Product Drawings

[ES2000-NO.4-B7-0-50MM](#)

English

Datasheets & Catalog Pages

[Measuring_Single_Wall_Tubing](#)

English

[ES2000 Pages from 9-1773447-9](#)

English

[Selecting_Correct_Tubing_1216](#)

English

[Flame-Retardant, Adhesive-Lined Heat-Shrinkable Tubing \(Extended Temp. Range\)](#)

English

Product Specifications

[Application Specification](#)

English