

FL SWITCH 1108T - Industrial Ethernet Switch



1085088

<https://www.phoenixcontact.com/in/products/1085088>

Please be informed that the data shown in this PDF document is generated from our online catalog. Please find the complete data in the user documentation. Our general terms of use for downloads are valid.



Ethernet switch, wide temperature range, eight RJ45 ports with 10/100/1000 Mbps on all ports, automatic data transmission speed detection, autocrossing function, and QoS

Your advantages

- Auto negotiation and autocrossing detection simplifies installation and setup
- Local diagnostic indicators with LEDs
- RJ45 ports support a transmission speed of 10/100/1000 Mbps
- QoS-prioritized (Quality of Service) messages
- PROFINET Conformance Class A for real-time data exchange
- Energy-efficient Ethernet in accord. with IEEE 802.3az
- PROFINET PTCP filter for reliable communication on PROFINET networks
- Enhanced traffic prioritization for automation protocols
- Jumbo frame support (frame size up to 9216 bytes/frame)

Commercial data

Item number	1085088
Packing unit	1 pc
Minimum order quantity	1 pc
Product key	DNN116
GTIN	4055626833170
Weight per piece (including packing)	355 g
Weight per piece (excluding packing)	260 g
Country of origin	TW

FL SWITCH 1108T - Industrial Ethernet Switch



1085088

<https://www.phoenixcontact.com/in/products/1085088>

Technical data

Dimensions

Width	40 mm
Height	125.4 mm
Depth	84 mm

Notes

Note on application

Note on application	Only for industrial use
---------------------	-------------------------

Material specifications

Housing material	Polycarbonate fiber reinforced
	Aluminum / steel sheet DC01

Mounting

Mounting type	DIN rail mounting
---------------	-------------------

Interfaces

Ethernet (RJ45)

Number of interfaces	8
Connection method	RJ45
Note on the connection method	Auto negotiation and autocrossing
Transmission speed	10/100/1000 Mbps
Transmission physics	Ethernet in RJ45 twisted pair
Transmission length	100 m (per segment)
Signal LEDs	Data receive, link status
No. of channels	8 (RJ45 ports)

Product properties

Product type	Switch
Product family	Unmanaged Switch 1000
Type	Stand-Alone
MTTF	76.8 Years (MIL-HDBK-217F standard, temperature 25°C, operating cycle 100%)
	1593.5 Years (SN 29500 standard, temperature 25°C, operating cycle 21%)
	1400.7 Years (Telcordia standard, 25°C temperature, 21% operating cycle (5 days a week, 8 hours a day))
Special properties	Extended temperature range

Switch functions

Basic functions	Unmanaged switch
	Autonegotiation

FL SWITCH 1108T - Industrial Ethernet Switch



1085088

<https://www.phoenixcontact.com/in/products/1085088>

	Store and Forward switching mode
MAC address table	4k
Status and diagnostic indicators	LEDs: U _S , link and activity per port

Security functions

Basic functions	Unmanaged switch
	Autonegotiation
	Store and Forward switching mode

Electrical properties

Maximum power dissipation for nominal condition	1.53 W (at 24 V DC)
Transmission medium	Copper

Supply

Supply voltage (DC)	24 V DC
Supply voltage (AC)	24 V AC (50/60 Hz)
Supply voltage range	9 V DC ... 32 V DC
	18 V AC ... 30 V AC (50/60 Hz)
Power supply connection	Via COMBICON, max. conductor cross section 2.5 mm ²
Residual ripple	3.6 V _{PP} (within the permitted voltage range)
Max. current consumption	170 mA (at 9 V DC)
Typical current consumption	55 mA (at 24 V DC)

Connection data

Connection technology

Connection name	Power supply
-----------------	--------------

Environmental and real-life conditions

Ambient conditions

Degree of protection	IP30
Ambient temperature (operation)	-40 °C ... 75 °C
Ambient temperature (storage/transport)	-40 °C ... 85 °C
Altitude	2000 m (maximum)
Permissible humidity (operation)	5 % ... 95 % (non-condensing)
Permissible humidity (storage/transport)	5 % ... 95 % (non-condensing)
Shock (operation)	30g (EN 60068-2-27)
Vibration (operation)	in acc. with IEC 60068-2-6: 5g, 150 Hz
Air pressure (operation)	79 kPa ... 108 kPa up to 2000 m above mean sea level (Without derating)
Air pressure (storage/transport)	79 kPa ... 108 kPa up to 2000 m above mean sea level (Without derating)

Approvals

Conformity/Approvals

FL SWITCH 1108T - Industrial Ethernet Switch



1085088

<https://www.phoenixcontact.com/in/products/1085088>

Conformance	CE-compliant
ATEX	Ⓜ II 3 G Ex ec IIC T4 Gc
EU-type examination certificate	UL 23 ATEX 3070X
IECEX	Ex ec IIC T4 Gc
IECEX certificate	IECEX UL 23.0065X
UL, USA / Canada	UL 61010-1, UL 61010-2-201 Class I, Div. 2, Groups A, B, C, D, T4 Class I, Zone 2, Group IIC, T4
FCC	Title 47 Part 15 Subpart B:2018 Class A

EMC data

Electromagnetic compatibility	Conformance with EMC Directive 2014/30/EU
Conformance with EMC directives	EN 61000-6-2 EN 61000-4-2 (ESD) Criterion B
	EN 61000-6-2 EN 61000-4-3 (electromagnetic fields) Criterion A
	EN 61000-6-2 EN 61000-4-4 (EFT burst) Criterion A
	EN 61000-6-2 EN 61000-4-5 (surge) Criterion B
	EN 61000-6-2 EN 61000-4-6 (line noise immunity) Criterion A
	EN 61000-6-4 Class A
Noise immunity	EN 61000-6-2 Class A
	EN 61000-6-2:2005
Noise emission	EN 61000-6-4:2007 + A1:2011

System properties

Functionality

Basic functions	Unmanaged switch
	Autonegotiation
	Store and Forward switching mode

Signaling

Status display	LEDs: U _S , link and activity per port
----------------	---

FL SWITCH 1108T - Industrial Ethernet Switch



1085088

<https://www.phoenixcontact.com/in/products/1085088>

Approvals

To download certificates, visit the product detail page: <https://www.phoenixcontact.com/in/products/1085088>



cULus Listed

Approval ID: E238705



IECEx

Approval ID: IECEx UL 23.0065X



ATEX

Approval ID: UL 23 ATEX 3070X



cULus Listed

Approval ID: E196811

FL SWITCH 1108T - Industrial Ethernet Switch



1085088

<https://www.phoenixcontact.com/in/products/1085088>

Classifications

ECLASS

ECLASS-11.0	19170402
ECLASS-12.0	19170402
ECLASS-13.0	19170402

ETIM

ETIM 9.0	EC000734
----------	----------

UNSPSC

UNSPSC 21.0	43222612
-------------	----------

FL SWITCH 1108T - Industrial Ethernet Switch



1085088

<https://www.phoenixcontact.com/in/products/1085088>

Environmental product compliance

EU RoHS

Fulfills EU RoHS substance requirements	Yes
Exemption	7(a), 7(c)-I

China RoHS

Environment friendly use period (EFUP)	EFUP-50
	An article-related China RoHS declaration table can be found in the download area for the respective article under "Manufacturer declaration". For all articles with EFUP-E, no China RoHS declaration table issued and required.

EU REACH SVHC

REACH candidate substance (CAS No.)	Lead(CAS: 7439-92-1)
-------------------------------------	----------------------

1085088

<https://www.phoenixcontact.com/in/products/1085088>

Accessories

MVSTBW 2,5/ 3-ST-5,08 GY - PCB connector

1783685

<https://www.phoenixcontact.com/in/products/1783685>

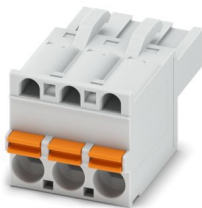


PCB connector, nominal cross section: 2.5 mm², color: gray, nominal current: 12 A, rated voltage (III/2): 320 V, contact surface: Sn, contact connection type: Socket, number of potentials: 3, number of rows: 1, number of positions: 3, number of connections: 3, product range: MVSTBW 2,5/...-ST, pitch: 5.08 mm, connection method: Screw connection with tension sleeve, screw head form: L Slotted, conductor/PCB connection direction: -90 °, locking clip: - Locking clip, plug-in system: COMBICON MSTB 2,5, locking: without, mounting method: without, type of packaging: packed in cardboard

FKCT 2,5/ 3-ST KMGY - PCB connector

1998263

<https://www.phoenixcontact.com/in/products/1998263>



PCB connector, nominal cross section: 2.5 mm², color: light gray, nominal current: 12 A, rated voltage (III/2): 320 V, contact surface: Sn, contact connection type: Socket, number of potentials: 3, number of rows: 1, number of positions: 3, number of connections: 3, product range: FKCT 2,5/...-ST, pitch: 5 mm, connection method: Push-in spring connection, conductor/PCB connection direction: 0 °, locking clip: - Locking clip, plug-in system: COMBICON MSTB 2,5, locking: without, mounting method: without, type of packaging: packed in cardboard

FL SWITCH 1108T - Industrial Ethernet Switch



1085088

<https://www.phoenixcontact.com/in/products/1085088>

FL PANEL ADAPTER 40 - Mounting panel

1085486

<https://www.phoenixcontact.com/in/products/1085486>



The FL PANEL ADAPTER 40 is designed to allow products 40 mm wide to be mounted flush to a panel, in any orientation.

FL DIN-RAIL ADAPTER 40 - Mounting panel

1085484

<https://www.phoenixcontact.com/in/products/1085484>



The FL DIN-RAIL ADAPTER 40 is designed to allow products 40 mm wide to be mounted flush to a standard 35 mm DIN rail, in any orientation.

FL SWITCH 1108T - Industrial Ethernet Switch

1085088

<https://www.phoenixcontact.com/in/products/1085088>



DT-LAN-CAT.6+ - Surge protection device

2881007

<https://www.phoenixcontact.com/in/products/2881007>



Surge protection in accordance with Class E_A (CAT6_A), for Gigabit Ethernet (up to 10 Gbps), token ring, FDDI/CDDI, ISDN, and DS1. Suitable for Power over Ethernet (PoE++ / 4PPoE) "Mode A" and "Mode B". RJ45 attachment plug with separate grounding cable and ground connection snap-on foot for NS 35 DIN rails.

FL CAT5 PATCH 0,5 - Patch cable

2832263

<https://www.phoenixcontact.com/in/products/2832263>



Patch cable, CAT5, assembled, 0.5 m

FL SWITCH 1108T - Industrial Ethernet Switch



1085088

<https://www.phoenixcontact.com/in/products/1085088>

FL CAT5 PATCH 1,0 - Patch cable

2832276

<https://www.phoenixcontact.com/in/products/2832276>



Patch cable, CAT5, assembled, 1 m

FL CAT5 PATCH 2,0 - Patch cable

2832289

<https://www.phoenixcontact.com/in/products/2832289>



Patch cable, CAT5, assembled, 2 m

FL SWITCH 1108T - Industrial Ethernet Switch



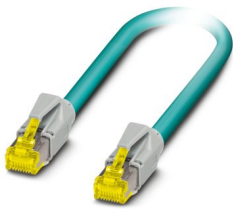
1085088

<https://www.phoenixcontact.com/in/products/1085088>

NBC-R4AC-R4AC-IE8A/.../... - Patch cable

1411854

<https://www.phoenixcontact.com/in/products/1411854>

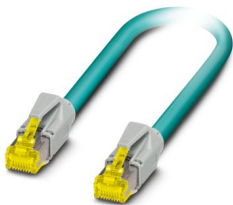


Patch cable, degree of protection: IP20, number of positions: 8, 10 Gbps, CAT6_A, cable outlet: straight, Ethernet

NBC-R4AC/10G-R4AC/10G-94F/2,0 - Patch cable

1408360

<https://www.phoenixcontact.com/in/products/1408360>



Patch cable, CAT6_A, 4-pair, shielded, connection not crossed (line), assembled at both ends with RJ45/IP20 connectors, outer sheath material: PUR, length: 2.0 m

FL SWITCH 1108T - Industrial Ethernet Switch



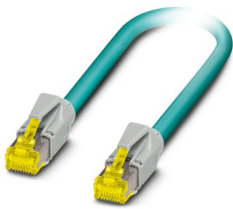
1085088

<https://www.phoenixcontact.com/in/products/1085088>

NBC-R4AC/10G-R4AC/10G-94F/3,0 - Patch cable

1408365

<https://www.phoenixcontact.com/in/products/1408365>

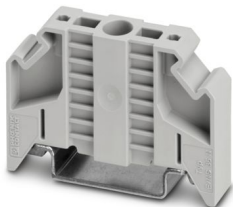


Patch cable, CAT6_A, 4-pair, shielded, connection not crossed (line), assembled at both ends with RJ45/IP20 connectors, outer sheath material: PUR, length: 3.0 m

E/NS 35 N - End bracket

0800886

<https://www.phoenixcontact.com/in/products/0800886>



End clamp, width: 9.5 mm, color: gray

FL SWITCH 1108T - Industrial Ethernet Switch

1085088

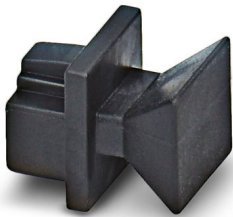
<https://www.phoenixcontact.com/in/products/1085088>



FL RJ45 PROTECT CAP - Dust protection

2832991

<https://www.phoenixcontact.com/in/products/2832991>



Dust protection caps for RJ45 socket

Phoenix Contact 2025 © - all rights reserved

<https://www.phoenixcontact.com>

PHOENIX CONTACT (I) Pvt. Ltd.

A-58/2, Okhla Industrial Area, Phase - II, New Delhi-110 020

+91.1275.71420

info@phoenixcontact.co.in