



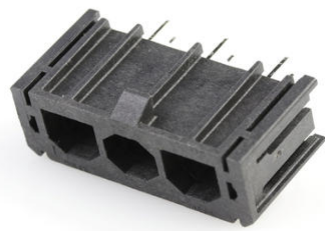
**Part Number :** [460071103](#)

**Product Description :** 7.50mm Pitch Sabre Header, Right-Angle, 3 Circuits, Glow-Wire Capable. Recommended PCB Thickness 1.60mm, without Board Lock. Complies with the UL1977 finger proof access requirement

**Series Number :** 46007

**Status :** Active

**Product Category :** PCB Headers and Receptacles



## Documents & Resources

### Drawings

[460071103 sd.pdf](#)

[PK-43160-0010-001.pdf](#)

### 3D Models and Design Files

[STEP AP242](#)

[SOLIDWORKS](#)

[Creo](#)

[Symbol and Footprint \(Multi-Format\)](#)


[SYM-46007-1103-001.zip](#)

### Specifications

[PS-44441-9999-001.pdf](#)

## Product Environment Compliance

### Compliance

GADSL/IMDS	Not Relevant
China RoHS	 per SJ/T 11365-2006
EU ELV	Not Relevant
Low-Halogen Status	Not Low-Halogen per IEC 61249-2-21
REACH SVHC	Not Contained per D(2025)4165-DC (25 June 2025)

EU RoHS	Compliant per EU 2015/863
---------	---------------------------

#### Compliance Statements

- EU RoHS
- REACH SVHC
- Low-Halogen

#### Industry Documents

- IPC 1752A Class C
- IPC 1752A Class D
- Molex Product Compliance Declaration
- IEC-62474
- chemSHERPA (xml)

#### Substances of Interest

- PFAS

#### EU RoHS Certificate of Compliance

#### Additional Product Compliance Information

## Part Details

### General

Status	Active
Category	PCB Headers and Receptacles
Series	46007
Description	7.50mm Pitch Sabre Header, Right-Angle, 3 Circuits, Glow-Wire Capable. Recommended PCB Thickness 1.60mm, without Board Lock. Complies with the UL1977 finger proof access requirement
Application	Power, Wire-to-Board
Comments	Fully Polarized, high power wire-to-board and wire-to-wire connector system; This Molex product is manufactured from material that has the following ratings, tested by independent agencies: a) A Glow Wire Ignition Temperature (GWIT) of at least 775 deg C per IEC 60695-2-13. b) A Glow Wire Flammability Index (GWFI) above 850 deg C per IEC 60695-2-12 and

	<p>hence complies with the requirements set out in the International Standard IEC 60335-1 5th edition - household and similar electrical appliances - safety, section 30 Resistance to heat and fire. The customers using this product must determine its suitability for use in their particular application through testing or other acceptable means as described in end-product glow-wire flammability test standard IEC 60695-2-11 and any applicable product end-use standard(s). If it is determined during the customer's evaluation of suitability, that higher performance is required, please contact Molex for possible product options.</p>
Component Type	PCB Header
Product Name	Sabre
UPC	822350247047

#### Agency

UL	E29179
----	--------

#### Electrical

Current - Maximum per Contact	18.0A
Voltage - Maximum	600V

#### Physical

Breakaway	No
Circuits (Loaded)	3
Circuits (maximum)	3
Color - Resin	Black
Durability (mating cycles max)	25
First Mate / Last Break	No
Flammability	94V-0
Glow-Wire Capable	Yes

Guide to Mating Part	No
Keying to Mating Part	Yes
Lock to Mating Part	Yes
Material - Metal	Brass
Material - Plating Mating	Tin
Material - Plating Termination	Tin
Material - Resin	High Temperature Thermoplastic
Net Weight	4.200/g
Number of Rows	1
Orientation	Right Angle
Packaging Type	Bag
PCB Locator	No
PCB Retention	N/A
PCB Thickness - Recommended	1.60mm
PC Tail Length	3.81mm
Pitch - Mating Interface	7.50mm
Pitch - Termination Interface	7.50mm
Plating min - Mating	0.889µm
Plating min - Termination	0.889µm
Polarized to Mating Part	Yes
Polarized to PCB	Yes
Shrouded	Fully
Stackable	No
Temperature Range - Operating	-40° to +75°C
Termination Interface Style	Through Hole

### Solder Process Data

Max-Duration	5
Lead-Free Process Capability	WAVE
Max-Cycle	1
Max-Temp	235

---

### Mates With / Use With

#### Mates with Part(s)

Description	Part Number
7.50mm Pitch Sabre Receptacle Crimp Housing, UL 94V-0, 3 Circuits, Black	<u>444412003</u>