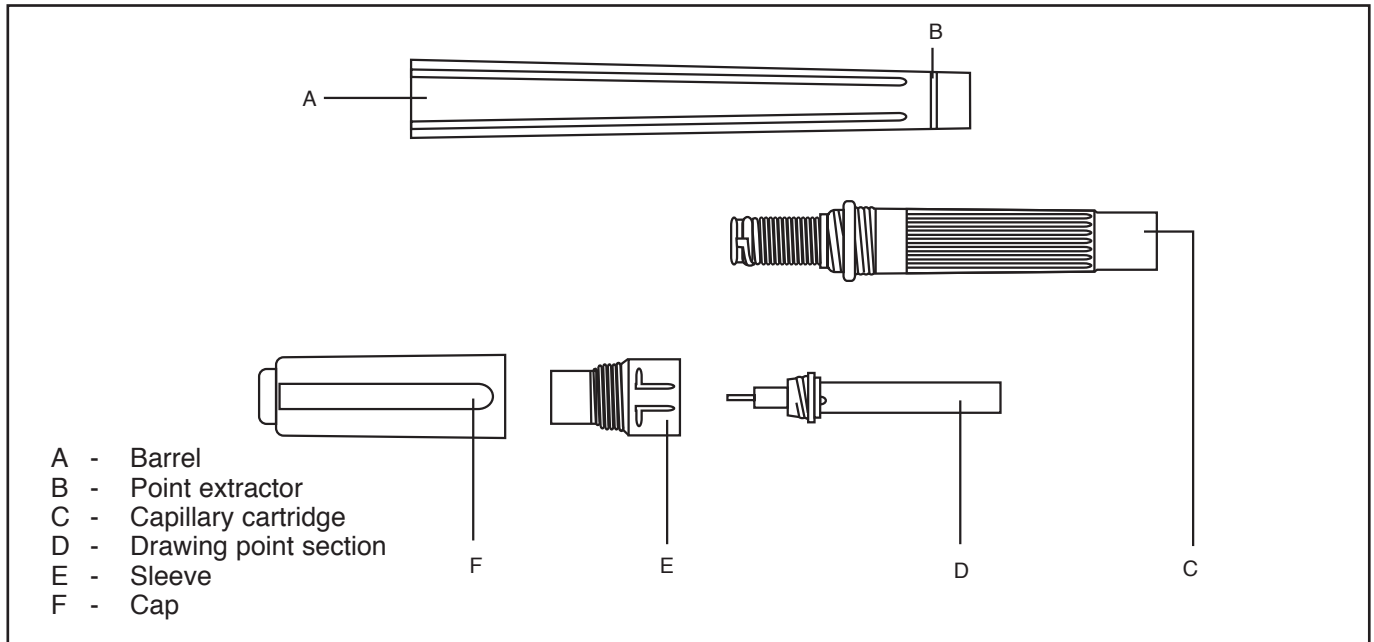




Instruction Leaflet

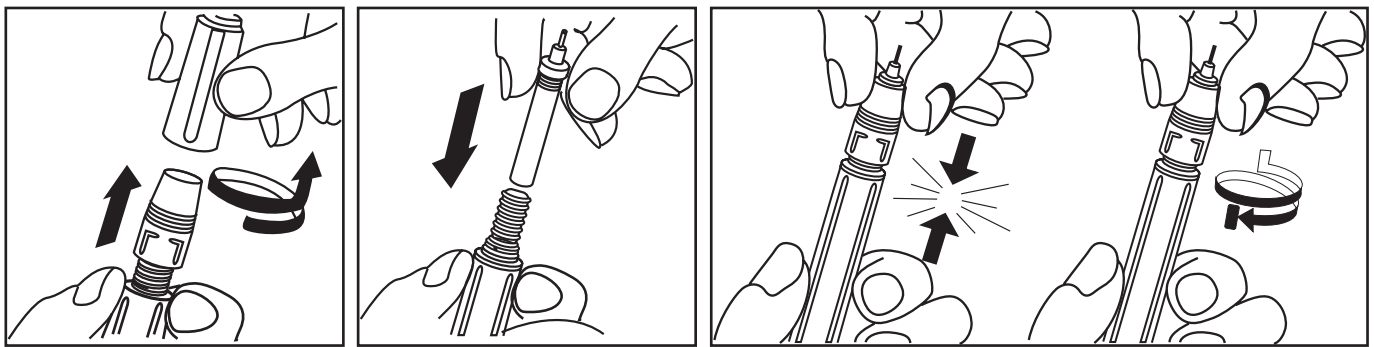
Technical pen sets

RS stock no. 601-423 and 601-489



The **RS** 'radiograph' range of pens is intended for either film or paper (see catalogue). Both ranges are constructed to withstand constant use in a professional environment where low maintenance is essential. However, periodic cleaning and cartridge changing will ensure a trouble free working life.

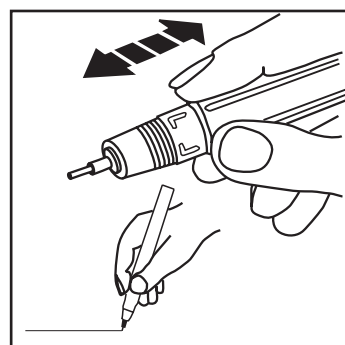
Initial use



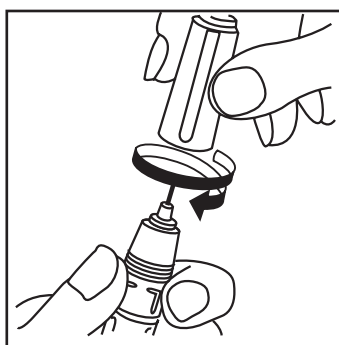
1. Screw off cap and sleeve.

2. Insert drawing point section.

3. Replace sleeve and press down until the capillary cartridge opens. Screw sleeve right on.

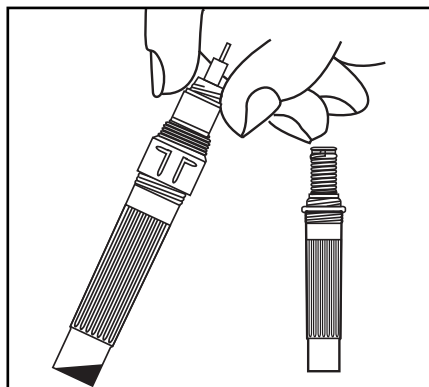


4. Shake the pen.

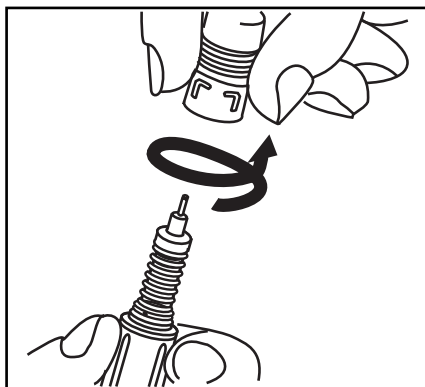


5. Screw cap back on tightly after use

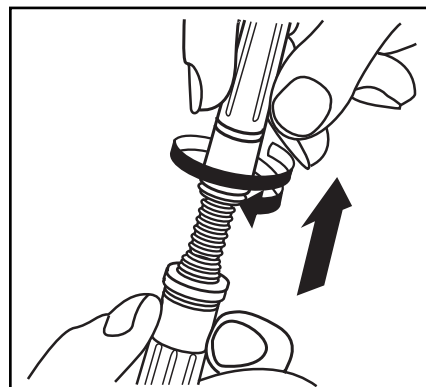
Cartridge changing



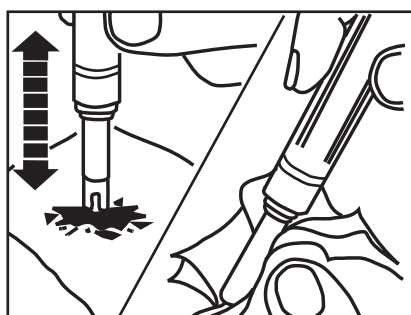
1. Use **RS** replacement cartridges only



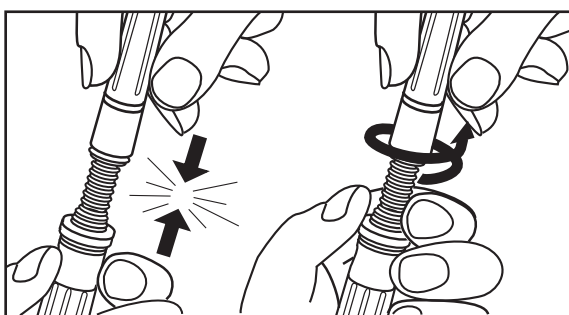
2. Screw off sleeve



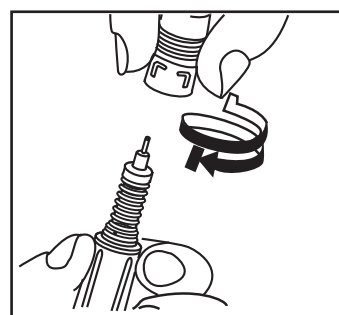
3. Thread rear end of barrel over drawing point section and pull gently to remove.



4. Tap remaining ink out of drawing point section and wipe clean



5. Press drawing point section into the new capillary cartridge until it opens



6. Replace sleeve and screw right on

Accessories

		Item	RS Stock No.		
Paper		0.25mm Spare Point	601-439	Film	0.25mm Spare Point
		0.35mm Spare Point	601-445		0.35mm Spare Point
		0.50mm Spare Point	601-451		0.50mm Spare Point
		0.70mm Spare Point	601-467		0.70mm Spare Point
		Ink cartridges (3)	601-473		Ink cartridges (3)
					RS Stock no.
					601-495
					601-502
					601-518
					601-524
					601-530

The information provided in **RS** technical literature is believed to be accurate and reliable; however, RS Components assumes no responsibility for inaccuracies or omissions, or for the use of this information, and all use of such information shall be entirely at the user's own risk. No responsibility is assumed by RS Components for any infringements of patents or other rights of third parties which may result from its use. Specifications shown in RS Components technical literature are subject to change without notice.