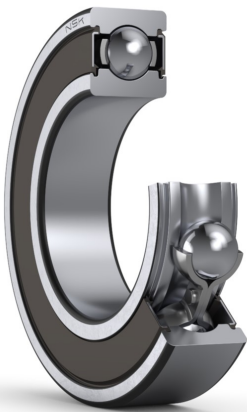




PRODUCT DATASHEET

Datasheet creation date: 2025/07/08 2:05 (UTC)



6205VV

Single-Row Deep Groove Ball Bearings

Parts Number

| |
|----------|
| 6205VVC3 |
|----------|

Boundary Dimensions

| | | | |
|----------|----|----|-------------------|
| d | 25 | mm | Bore diameter |
| D | 52 | mm | Outside diameter |
| B | 15 | mm | Width |
| r (min.) | 1 | mm | Chamfer dimension |

Basic Load Ratings

| | | | |
|-----|-------|---|---------------------------|
| Cr | 15400 | N | Basic dynamic load rating |
| C0r | 7850 | N | Basic static load rating |

Speeds

| | | | |
|--------|-------|-------|--------------------|
| Grease | 15000 | min-1 | Grease lubrication |
|--------|-------|-------|--------------------|

Abutment and Fillet Dimensions

| | | | |
|-----------|----|----|---|
| da (min.) | 30 | mm | Diameter of shaft abutment |
| da (max.) | 32 | mm | Diameter of shaft abutment |
| Da (max.) | 47 | mm | Diameter of housing abutment |
| ra (max.) | 1 | mm | Radius of shaft or housing fillet |
| Dx (min.) | 0 | mm | Diameter of snap ring recess in the housing |
| Cy (max.) | 0 | mm | Distance from outer ring side face to snap ring back face |

Calculation factors

| | | |
|----|------|--------|
| fo | 13.9 | Factor |
|----|------|--------|

Additional information

| | | |
|----|-------|---------------------|
| z | 9 | Number of Balls |
| Dw | 7.938 | mm Ball Diameter |

Mass

| | | | |
|--------------|-------|----|--------------|
| Mass approx. | 0.129 | kg | Mass approx. |
|--------------|-------|----|--------------|

