

## FEATURES

- 12 V dc Supply Voltage
- Iron Core
- Spur gear head
- 6mm shaft diameter

## RS PRO, 12 V dc, 70 mNm, Brushed DC Geared Motor, Output Speed 223 rpm

RS Stock No.: 901-3288



RS Professionally Approved Products bring to you professional quality parts across all product categories. Our product range has been tested by engineers and provides a comparable quality to the leading brands without paying a premium price.

## DC Geared Motors

### Product Description

From RS Pro, this DC geared motor is ideal for low speed applications that require high starting torque. The brushed motor ensures a low cost and simplified design, while offering versatility and reliability. With an iron core construction, the DC motor has a spur gearbox for consistent high output torque. The gear motor also features a robust flange with screw hole fixing, for easy and secure installation. This 38 mm geared motor is designed for most low voltage applications and provides a 223 rpm no-load speed.

### General Specifications

DC Motor Type	Brushed
Output Speed (No Load)	223rpm
Gearhead Type	Spur
Gear Ratio	0.75069444444
Power Rating	3.718 W
Application	Power tools, Water pumps, Camera Systems, Adjusting devices, Robotics, Fans

### Electrical Specifications

Supply Voltage	12V dc
Maximum Output Torque	70mNm

### Mechanical Specifications

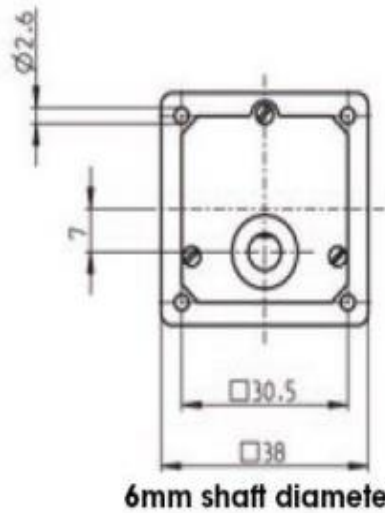
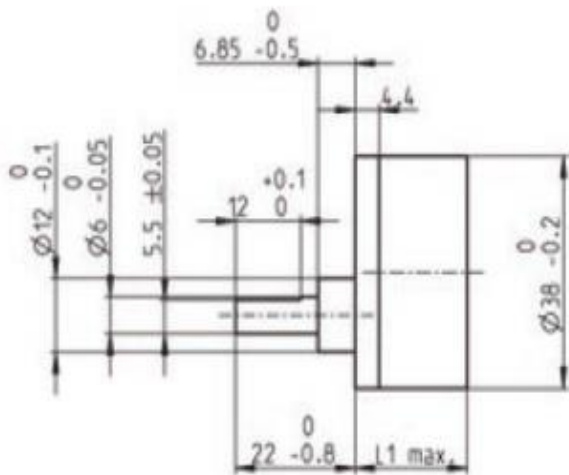
Shaft Diameter	6mm
Core Construction	Iron Core
Shaft Angle	Straight
Dimensions	71.2mm x 38mm x 38 mm
Length	71.2mm
Width	38mm

# DC Geared Motors

Depth	38mm
-------	------

## Approvals

Compliance/Certifications	2011/65/EU and 2015/863
Standards Met	RoHS



6mm shaft diameter

M 1:2

## DC Geared Motors



RS Number	New Ratio	Replaces	Voltage	New Speed	New Max Torque	New Dimensions in mm
9013288	21:1	255-9582	12v	223rpm	70mNm	71.20x38x38
9013282	30:1	255-9598	12v	155rpm	100mNm	71.20x38x38
9013291	60:1	255-9605	12v	80rpm	200mNm	73.70x38x38
9013294	105:1	255-9611	12v	45rpm	300mNm	73.70x38x38
9013298	210:1	255-9627	12v	22rpm	600mNm	107.60x38x38
9013308	525:1	255-9649	12v	9rpm	600mNm	110.10x38x38
9013301	750:1	255-9655	12v	6rpm	600mNm	110.10x38x38
9013305	21:1	440-313	24v	223rpm	70mNm	71.20x38x38
9013314	30:1	440-329	24v	155rpm	100mNm	71.20x38x38
9013317	60:1	440-335	24v	80rpm	200mNm	73.70x38x38
9013311	105:1	440-341	24v	45rpm	300mNm	73.70x38x38
9013320	210:1	440-357	24v	22rpm	600mNm	107.60x38x38
9013323	525:1	440-363	24v	9rpm	600mNm	110.10x38x38
9013327	750:1	440-379	24v	6rpm	600mNm	110.10x38x38