



Part Number : [15474037](#)

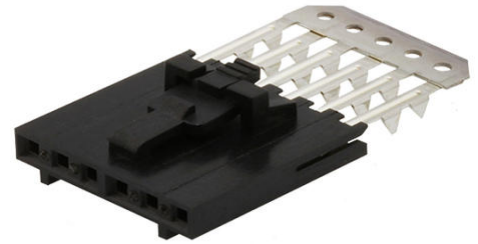
Product Description : SL Single Row, Female,
Version G Receptacle, 3 Circuits

Series Number : 70430

Status : Active

Product Category : FFC / FPC Connectors

Engineering Number : 70430-0492



Documents & Resources

Drawings

[015474037_sd.pdf](#)

[PK-70873-0001-001.pdf](#)

3D Models and Design Files

[STEP AP242](#)

[SOLIDWORKS](#)


[Creo](#)

Specifications

[PS-70430-001.pdf](#)

Product Environment Compliance

Compliance

GADSL/IMDS	Compliant with Exemption 44; 34; 33
China RoHS	 per SJ/T 11365-2006
EU ELV	Not Relevant
Low-Halogen Status	Not Low-Halogen per IEC 61249-2-21
REACH SVHC	Not Contained per D(2025)4165-DC (25 June 2025)
EU RoHS	Compliant per EU 2015/863

[Compliance Statements](#)

- EU RoHS
- REACH SVHC
- Low-Halogen

Industry Documents

- IPC 1752A Class C
- IPC 1752A Class D
- Molex Product Compliance Declaration
- IEC-62474
- chemSHERPA (xml)

Substances of Interest

- PFAS

EU RoHS Certificate of Compliance

Additional Product Compliance Information

Part Details

General

Status	Active
Category	FFC / FPC Connectors
Series	70430
Description	SL Single Row, Female, Version G Receptacle, 3 Circuits
Product Name	SL
UPC	800755015485

Agency

CSA	LR19880
UL	E29179

Electrical

Current - Maximum per Contact	1.0A, 2.0A
Voltage - Maximum	250V

Physical

Actuator Type	N/A
Circuits (Loaded)	3
Color - Resin	Black
Contact Position	N/A

Durability (mating cycles max)	50
Flammability	94V-0
Material - Metal	Phosphor Bronze
Material - Plating Mating	Gold
Material - Plating Termination	Tin
Material - Resin	Polyester Alloy
Net Weight	0.524/g
Number of Rows	1
Orientation	Vertical
Packaging Type	Tube
PCB Mounting	N/A
PCB Retention	None
PCB Thickness - Recommended	1.60mm, 2.40mm
PC Tail Length	3.30mm
Pitch - Mating Interface	2.54mm
Pitch - Termination Interface	2.54mm
Plating min - Mating	0.762µm
Plating min - Termination	1.905µm
Polarized to PCB	N/A
Stackable	Yes
Temperature Range - Operating	-40° to +105°C
Wire/Cable Type	FFC/FPC

Mates With / Use With

Mates with Part(s)

Description	Part Number
SL Single Row Housing Panel Mounts	<u>70018</u>
SL Single Row Crimp Housings	<u>70107</u>
SL Vertical Single Row Headers	<u>70541</u>
SL Vertical Single Row Headers	<u>70543</u>
SL Vertical Single Row Headers	<u>70545</u>
SL Right-Angle Single Row Headers	<u>70551</u>

SL Right-Angle, Single Row, Low Profile Headers	<u>70553</u>
SL Right-Angle Single Row Headers	<u>70555</u>
SL Right-Angle, Single Row, Low Profile, Surface Mount Headers	<u>70634</u>
SL Vertical, Single Row, Surface Mount Headers	<u>74099</u>

Application Tooling

Global

Description	Part Number
Tool Kit for Standard Manual Press FFC	<u>622007400</u>
Standard Manual Press for FFC	<u>622007800</u>
FFC 2 thru 20 Circuit Termination Kit for use in the Molex TM-3000 or TM-4000 press installed into the TM-42 Replacement Crimp Module	<u>638018550</u>