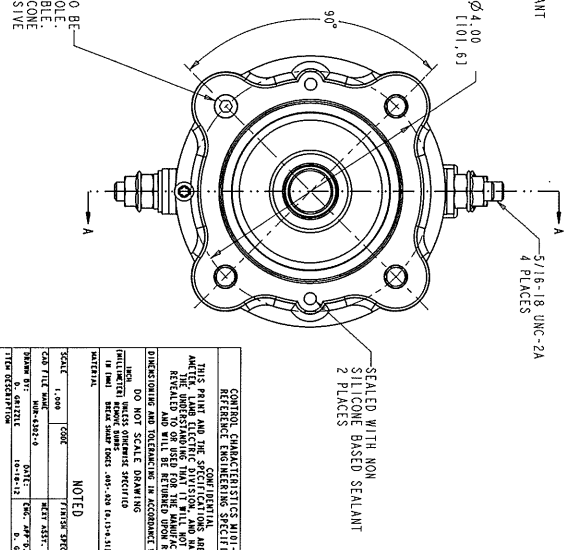
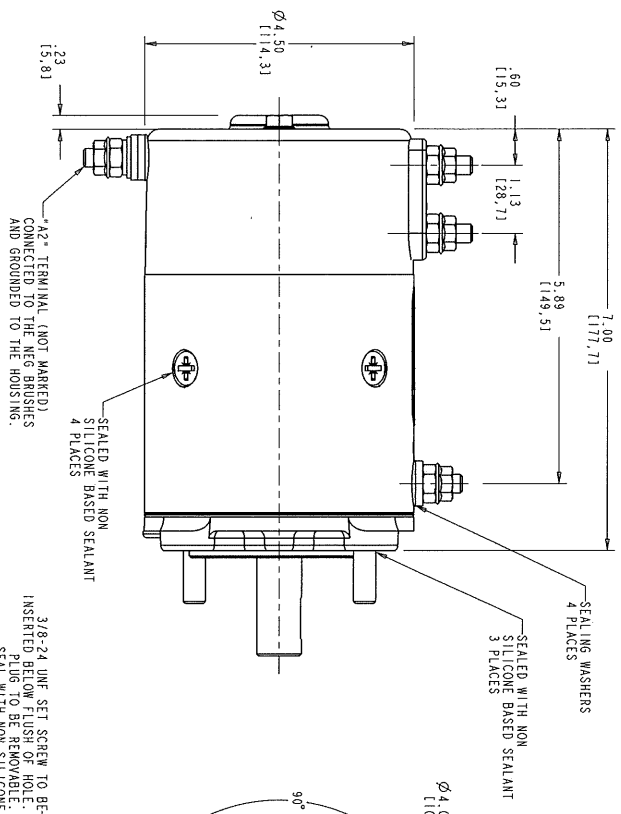
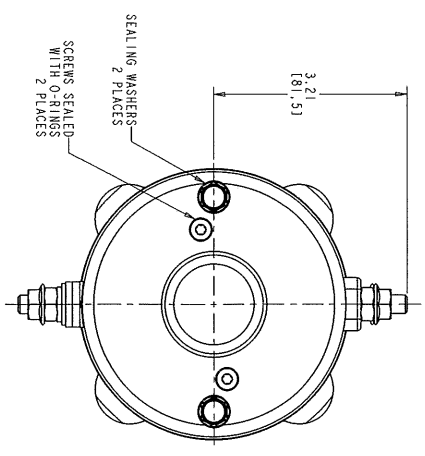
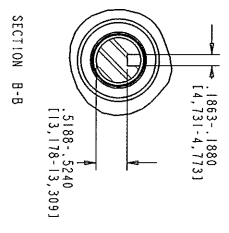
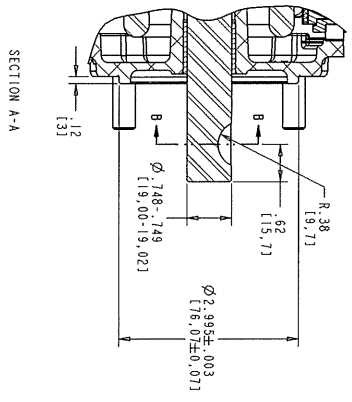
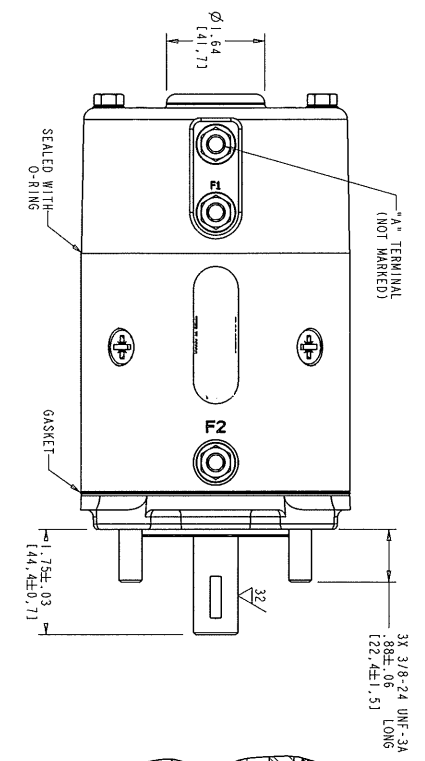
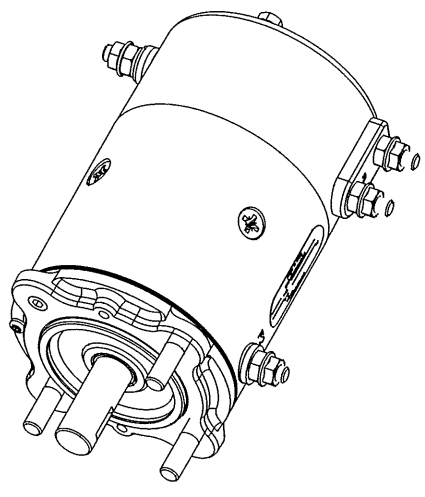


REV. NO.		MUR-6302-0		REVISIONS	
REV.	EQ.	DATE	BY	DATE	BY
1	1				



- NOTES:
- VOLTAGE: 12V
 - PERFORMANCE CURVE: CU-3201.
 - ROTATION: REVERSIBLE.
 - CODE ROTATION: CONNECT "A" TO "12", "A1" TO POSITIVE BATTERY, "A2" TO GROUND.
 - CODE ROTATION: CONNECT "A" TO "12", "A1" TO POSITIVE BATTERY, "A2" TO GROUND.
 - BEK TESTED AT TORQUE: 31 OZ-IN MAX PER ONE REVOLUTION OF SHAFT.
 - MAX SHAFT ENDPLAY: .06"
 - FINISH: BLACK POWDER COAT.

PROJECTION	THIRD ANGLE
MOTOR, REVERSIBLE	
MUR-6302-0	

REV. NO. MUR-6302-0

CONTROL CHARACTERISTICS AND MOUNTING INFORMATION
 REFERENCE ENGINEERING SPECIFICATION K-1

THIS PRINT AND THE SPECIFICATIONS ARE THE PROPERTY OF
 MURRAY ELECTRONIC CORPORATION, AND HAS BEEN ASSIGNED WITH
 THIS PRINT TO THE MANUFACTURER FOR THE MANUFACTURE OF OTHERS
 REVEALED TO OR USED FOR THE MANUFACTURE FOR OTHERS

DO NOT SCALE DRAWING

UNLESS OTHERWISE SPECIFIED

ALL DIMENSIONS UNLESS OTHERWISE SPECIFIED

FINISH: BLACK POWDER COAT

DATE: 01-18-73

BY: [Signature]

CHKD: [Signature]

SCALE: 1:100

CAD FILE: MUR-6302-0

DATE: 01-18-73

BY: [Signature]

CHKD: [Signature]

DATE: 01-18-73

BY: [Signature]

CHKD: [Signature]

DATE: 01-18-73