



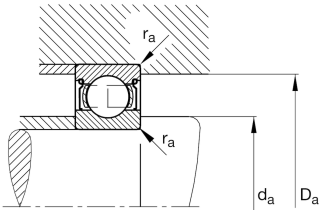
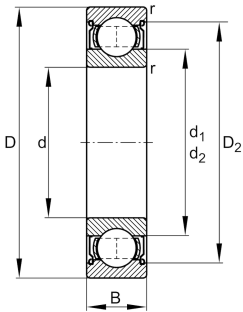
FAG

6024-2Z

Deep groove ball bearing

Deep groove ball bearing 60...-2Z, single row, shields, steel sheet metal cage

Technical information



Your current product variant

Sealing	2Z	Non-contact shield on both sides
Cage	JN	Steel sheet metal
Tolerance class	PN	Normal (PN)
Dimensional / heat stabilization	S0	Rings dimensional stabilized up to 150°
Lubricant	GA13	Ball bearing and insert bearing grease, standard for D>62mm
Radial internal clearance	CN (Group N)	Normal internal clearance
Bore type	Z	Cylindrical

Main Dimensions & Performance Data

d	120 mm	Bore diameter
D	180 mm	Outside diameter
B	28 mm	Width
C <sub>r</sub>	88,000 N	Basic dynamic load rating, radial
C <sub>0r</sub>	77,000 N	Basic static load rating, radial
C <sub>ur</sub>	3,650 N	Fatigue load limit, radial
n <sub>G</sub>	4,250 1/min	Limiting speed
n <sub>gr</sub>	4,450 1/min	Reference speed
≈m	2.16 kg	Weight



Mounting dimensions

$d_{a\min}$	128.8 mm	Minimum diameter shaft shoulder
$D_{a\max}$	171.2 mm	Maximum diameter of housing shoulder
$r_{a\max}$	2 mm	Maximum fillet radius

Dimensions

$r_{\min}$	2 mm	Minimum chamfer dimension
$D_1$	161.38 mm	Shoulder diameter outer ring
$D_2$	165.36 mm	Caliber diameter outer ring
$d_1$	139.4 mm	Shoulder diameter inner ring

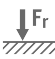
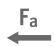
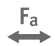



Temperature range

$T_{\min}$	-20 °C	Operating temperature min.
$T_{\max}$	120 °C	Operating temperature max.

Calculation factors

$f_0$	15.8	Calculation factor
-------	------	--------------------

Characteristics

-   $F_r$  Radial load
-   $F_a$  Axial load in one direction
-   $F_a$  Axial load in two directions
-   $L_h$  Lifetime lubrication, freedom from maintenance
-  Grease Lubrication
-  Sealed on both sides