



# Wiha Torque VDE screwdrivers.

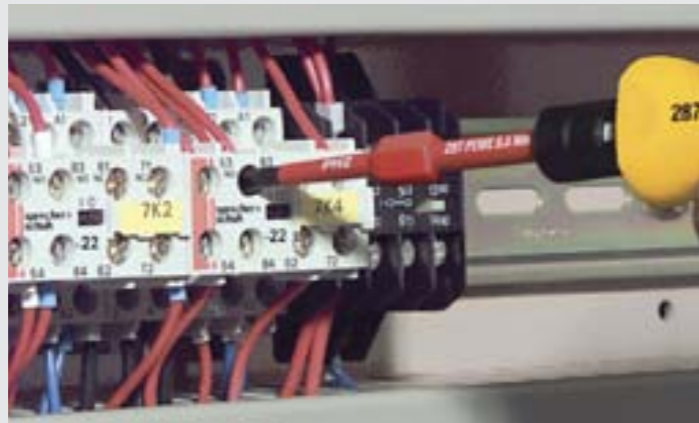
Precise and high repeat accuracy.

slimTECHNOLOGY



## Wiha TorqueVario®-S VDE with integrated scale.

For controlled tightening of the screw while providing user safety for electrical applications we offer the TorqueVario®-S VDE with an integrated window scale in combination with Wiha Torque VDE interchangeable blades. All VDE handles and blades are individually tested and provide safety up to 1000 V AC / 1500 V DC. The Torque Vario®-S VDE series has three models covering torque ranges from 0.6 Nm up to 8.0 Nm.



slimTECHNOLOGY:  
Up to 33% reduction of the blade diameter in the critical working area allows effortless access to low-lying fastening/ spring elements.



When working with VDE tools, observe the national safety and accident prevention regulations.

## Wiha Torque VDE screwdrivers.

- Clearly audible and perceptible click on attaining the pre-set torque
- Torque accuracy  $\pm 6\%$  of the pre-set scale value
- Delivered with factory calibration certificate
- Each tool is individually tested and marked with an identification number
- Safety when working with live equipment up to 1000 V AC and 1500 V DC
- Each screwdriver is individually tested in a water bath at 10.000 Volts according to IEC 60900:2004
- Compact and particularly low weight design
- Ergonomic handle sizes that are proportional to the torque ranges
- Fulfills all accuracy requirements as defined by EN ISO 6789, BS EN 26789 and ASME B 107.14M

## TorqueVario®-S VDE. Torque VDE interchangeable blades.



**2872** TorqueVario®-S VDE torque screwdriver. Insulation up to 1000 V AC, GS-mark. Torque value can be set via window scale. Automatic release.

Handle: Torque infinitely adjustable with Torque-Setter setting tool (also supplied). Ergonomic multi-component handle, insulation up to 1000 V AC, GS mark. Handle sizes proportioned to optimise torque setting. Audible and perceptible click when the pre-set torque has been attained.

Standards: Manufactured acc. to IEC 60900:2004. EN ISO 6798, BS EN 26789, ASME B107.14M.

Accuracy:  $\pm 6\%$ , traceable to national standards.

Application: For electrical applications up to 1000 V AC where recommended torque settings are important. Use in combination with a Wiha torque VDE interchangeable blade.

Extra: Delivered in practical plastic box, incl. factory calibration certificate.

Order-No.	Nm	Ø	→	←	max. Nm	→
26625 7	0.6-2.0	3.8	131	30		1
26626 4	1.0-5.0	3.8	138	36		1
26627 1	2.0-8.0	3.8	142	41		1



**285-900** Torque-Setter. Setting tool for variable torque screwdrivers. Included in every torque screwdriver delivery.

Blade: Octagonal blade, through hardened, zinc-plated.

Handle: Cellulose acetate with micro-fine surface structure.

Order-No.	→	←	max. Nm
26864 0	80	150	1



**2879** Torque VDE TORX® interchangeable blade. Insulation up to 1000 V AC, GS-mark. Exclusively for Wiha VDE torque screwdrivers.

Blade: High quality chrome-vanadium-molybdenum steel, through hardened, black-finish. Insulation moulded directly onto blade.

Standards: Manufactured acc. to IEC 60900:2004, each tool individually tested at 10 000 volts.

Application: For controlled fastening on live parts up to 1000 V AC.

Order-No.	→	←	max. Nm
27956 1	T8	3.8	220 65 1.3
27957 8	T9	3.8	220 65 2.5
27958 5	T10	3.8	220 65 3.8
27959 2	T15	3.8	220 65 5.5
27960 8	T20	3.8	220 65 8.0
27961 5	T25	3.8	220 65 8.0

Products on this page are VDE-tested

## Torque VDE interchangeable blades.



**2879** Torque VDE slotted interchangeable blade. Insulation up to 1000 V AC, GS-mark. Exclusively for Wiha VDE torque screwdrivers.

Standards: Tip DIN ISO 2380.

Order-No.	→	←	max. Nm
26687 5	0.5	3.0	3.8 220 65 0.6
26688 2	0.6	3.5	3.8 220 65 1.1
26689 9	0.8	4.0	3.8 220 65 2.5
26690 5	1.0	5.5	3.8 220 65 3.8



**2879** Torque VDE Xeno interchangeable blade for terminal screws (slotted/ Phillips). Insulation up to 1000 V AC, GS-mark. Exclusively for Wiha VDE torque screwdrivers.

Order-No.	→	←	max. Nm
33585 4	SL/PH1	3.8	220 65 3.8
33571 7	SL/PH2	3.8	220 65 5.5 slim version



**2879** Torque VDE Xeno interchangeable blade for terminal screws (slotted/ Pozidriv). Insulation up to 1000 V AC, GS-mark. Exclusively for Wiha VDE torque screwdrivers.

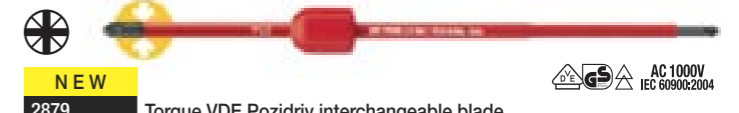
Order-No.	→	←	max. Nm
33572 4	SL/PZ1	3.8	220 65 3.8
33586 1	SL/PZ2	3.8	220 65 5.5 slim version



**2879** Torque VDE Phillips interchangeable blade. Insulation up to 1000 V AC, GS-mark. Exclusively for Wiha VDE torque screwdrivers.

Standards: Tip DIN ISO 8764.

Order-No.	→	←	max. Nm
26691 2	PH0	3.8	220 65 0.9
26692 9	PH1	3.8	220 65 3.8
26693 6	PH2	3.8	220 65 5.5 slim version



**2879** Torque VDE Pozidriv interchangeable blade. Insulation up to 1000 V AC, GS-mark. Exclusively for Wiha VDE torque screwdrivers.

Standards: Tip DIN ISO 8764.

Order-No.	→	←	max. Nm
26694 3	PZ0	3.8	220 65 0.9
26695 0	PZ1	3.8	220 65 3.8
26696 7	PZ2	3.8	220 65 5.5 slim version