



QSFP-DD CONNECTORS & CABLE ASSEMBLIES

400G Pluggable I/O Solutions

TE Connectivity's (TE) QSFP-DD (quad small form-factor pluggable double density) doubles the density of QSFP interconnects with an eight-lane electrical interface capable of 28 Gbps NRZ or 56 Gbps PAM-4 to achieve 200 or 400 Gbps aggregate per port. The QSFP-DD portfolio's backwards compatibility allows existing QSFP modules to be plugged into QSFP-DD ports. Our QSFP-DD cages feature a proprietary heat sink design, making them the only solution to work in 15-18W applications at a low cost - providing superior thermal and signal integrity performance.

Applications

- Servers
- Switches
- Routers
- Data centers
- High performance computing

te.com/400G

QSFP-DD Connectors & Cable Assemblies

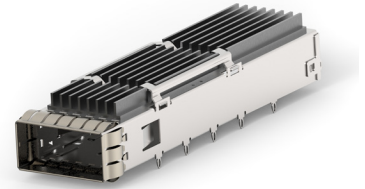
High Speed 400G Pluggable I/O Solutions

Surface Mount (SMT) Connectors & Cages

- Faceplate density equal to current 1xN QSFP28
- 1x1, 1x2, 1x3, 1x4, 1x5 and 1x6 cages available
- Cages are belly-to-belly compatible
- Connector is traditional SMT with 4 rows
- Multiple heatsink and lightpipe options available
 - Customizable with standard PCIe, SAN and NET heatsink heights, or to customer defined requirements
 - 1, 2 and 4 lightpipe configurations



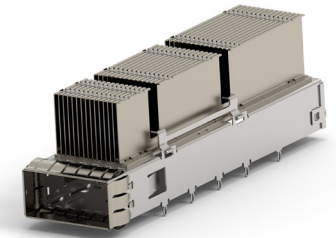
SMT connector



1x1 cage with extruded aluminum heatsinks

TE has conducted extensive research on module-to-heatsink thermal performance, and applied this to optimize QSFP-DD.

- Extensive structural analysis on mechanical design and performance
- Wear and durability testing to ensure repeated results over time
- Proprietary finish on riding heatsink mating interface for optimal heat transfer



1x1 cage with thermally enhanced zipper fin heatsinks

General Part Number Offering

SMT Connectors

Part number
2318579-1
2318579-2 (belly-to-belly)

		Part Number						
Ports	Rear Pins	Heat Sink	ZIP Fin	Extruded	Lightpipe Add-On (Available upon request)			
					Type	Heatsink Height	Total Height**	
1x1	1	PCI	2342934-1	2342933-1	2325129-1	Dual Light Pipe, Left		
		SAN	2342934-2	2342933-2	2325129-2	Dual Light Pipe, Right		
		NET	2342934-3	2342933-3	2324420-1	Quad Light Pipe, Side		
1x2	1	PCI	2342936-1	2342935-1	Heatsink*			
		SAN	2342936-2	2342935-2				
		NET	2342936-3	2342935-3				
1x3	0	PCI	2342888-1	2342886-1	Type	Heatsink Height	Total Height**	
		SAN	2342888-2	2342886-2	PCI	4.2mm	13.7mm	
		NET	2342888-3	2342886-3	SAN	6.5mm	16mm	
1x4	0	PCI	2343989-1	2343988-1	NET	13.5mm	23mm	
		SAN	2343989-2	2343988-2	* Heatsinks available in extruded aluminum and thermally enhanced ZIP fin **Module inserted			
		NET	2343989-3	2343988-3				
1x5	0	PCI	2343987-1	2343986-1				
		SAN	2343987-2	2343986-2				
		NET	2343987-3	2343986-3				
1x6	0	PCI	2342892-1	2342891-1				
		SAN	2342892-2	2342891-2				
		NET	2342892-3	2342891-3				

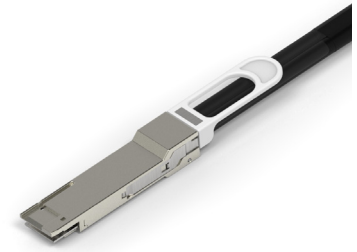
TE's thermal engineering team will work directly with you to design and optimize custom QSFP-DD port configurations

QSFP-DD Connectors & Cable Assemblies

High Speed 400G Pluggable I/O Solutions

Cable Assemblies

- QSFP-DD cable assemblies are similar to QSFP28 4 channel (8 pair), but use double the channels to 8 (16 pair) by using a 2nd row of contact/pad locations on the front of the PCB
- 16 pair 28AWG cable maximum fit (2.5m), plans for as small as 32AWG
 - QSFP-DD to QSFP-DD
 - QSFP-DD to 2x and 4x QSFP28/56
 - QSFP-DD to 8x SFP28/56
- Maximum cable reaches to meet IEEE 802.3cd SDD21 requirement of -17.28dB at 13.28 GHz



QSFP-DD cable assembly

General Part Number Offering

Configuration	Data Rate	AWG	Base Part Number	Cable Assembly Length (meters)					
				0.5	1.0	1.5	2.0	2.5	3.0
400G to 400G	56 Gbps PAM-4	32	2323765	-1	-2	-3			
400G to 400G	56 Gbps PAM-4	30	2323766	-1	-2	-3	-4		
400G to 400G	56 Gbps PAM-4	28	2323767		-1	-2	-3	-4	
400G to 2x200G	56 Gbps PAM-4	32	2821986	-1	-2	-3			
400G to 2x200G	56 Gbps PAM-4	30	2821987	-1	-2	-3			
400G to 2x200G	56 Gbps PAM-4	28	2821988		-1	-2	-3	-4	
400G to 4x100G	56 Gbps PAM-4	32	2821992	-1	-2	-3			
400G to 4x100G	56 Gbps PAM-4	30	2821993	-1	-2	-3			
400G to 4x100G	56 Gbps PAM-4	28	2821994		-1	-2	-3	-4	
400G to 8x50G	56 Gbps PAM-4	32	2327687	-1	-2	-3			
400G to 8x50G	56 Gbps PAM-4	30	2327688	-1	-2	-3			
400G to 8x50G	56 Gbps PAM-4	28	2327689		-1	-2	-3	-4	

QSFP-DD Connectors & Cable Assemblies

High Speed 400G Pluggable I/O Solutions

TE Technical Support Center

USA:	1.800.522.6752
Canada:	1.905.475.6222
Mexico:	52.0.55.1106.0800
Latin/S. America:	54.0.11.4733.2200
Germany:	49.0.6251.133.1999
UK:	44.0.800.267666
France:	33.0.1.3420.8686
Netherlands:	31.0.73.6246.999
China:	86.0.400.820.6015

te.com

TE Connectivity, TE Connectivity (logo) and Every Connection Counts are trademarks owned or licensed by the TE Connectivity family of companies.

All other logos, products and/or company names referred to herein might be trademarks of their respective owners.

The information given herein, including drawings, illustrations and schematics which are intended for illustration purposes only, is believed to be reliable. However, TE Connectivity makes no warranties as to its accuracy or completeness and disclaims any liability in connection with its use. TE Connectivity's obligations shall only be as set forth in TE Connectivity's Standard Terms and Conditions of Sale for this product and in no case will TE Connectivity be liable for any incidental, indirect or consequential damages arising out of the sale, resale, use or misuse of the product. Users of TE Connectivity products should make their own evaluation to determine the suitability of each such product for the specific application.

© 2019 TE Connectivity Ltd. family of companies All Rights Reserved.

1-1773960-5 01/19 DND