

	1	2	3	4	5	6	7	8
	positions	02 PIN	03 PIN	04 PIN				
A	view from termination side pin part							
B								
C								
D								
E								

NOTE:

- MATERIAL AND FINISH**
SHELL ASSEMBLY: COPPER ALLOY, OUTER SHELL AND COLLET
NUT Cr PLATING, OTHER METALLIC COMPONENTS
Ni PLATING

INSULATOR: PEEK
CONTACT: COPPER ALLOY, GOLD PLATING
- ROHS COMPLIANCE
- PART NO.

Contact Pos. 02-04=2pln-4pln		Cable OD 22=OD:1,4mm-2,2mm 27=OD:2,2mm-2,7mm 35=OD:2,7mm-3,5mm
Shell Material 0=Brass		

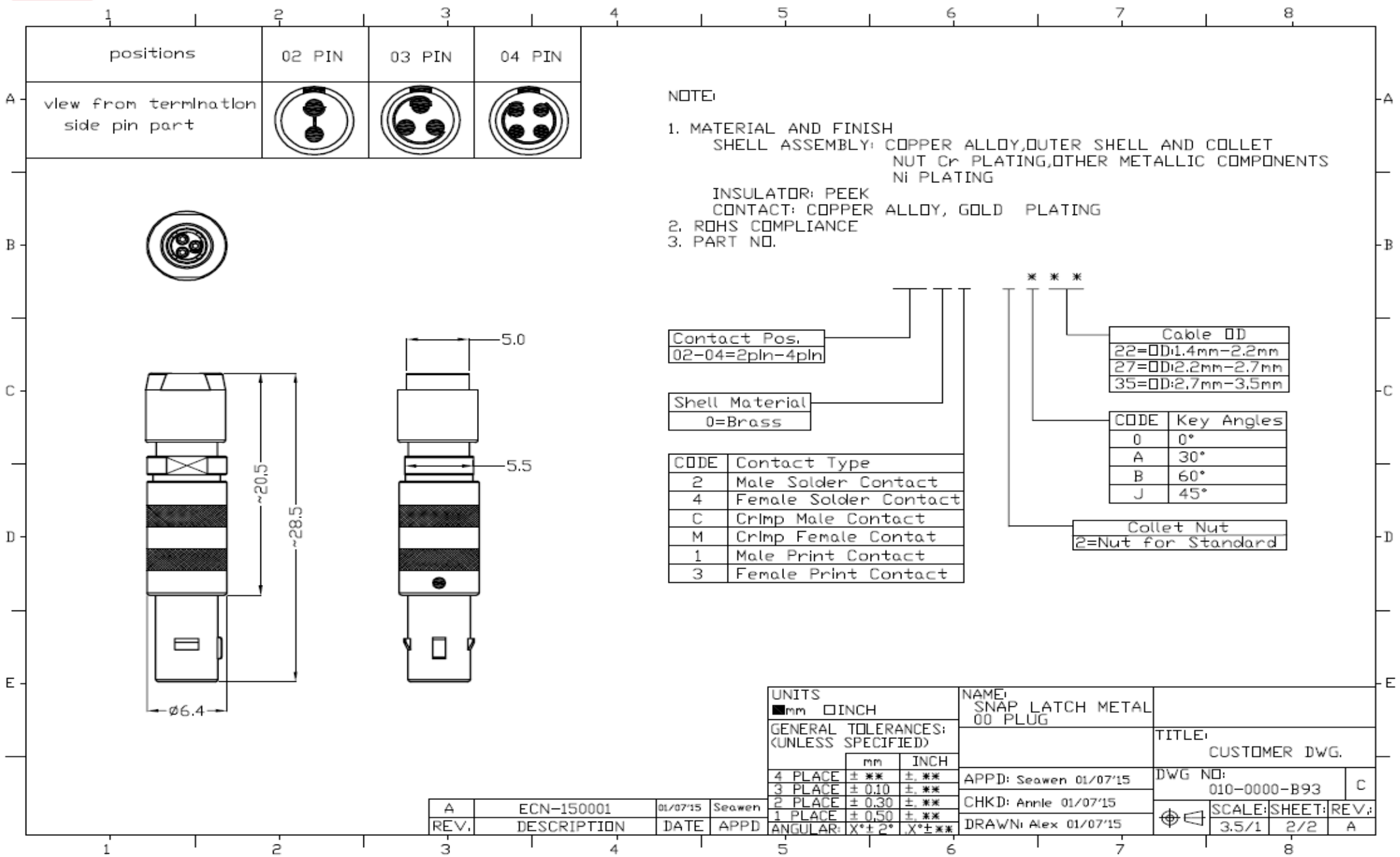
CODE	Key Angles
0	0°
A	30°
B	60°
J	45°

Collet Nut 1=Nut for fitting a bend relief		
---	--	--

CODE	Contact Type
2	Male Solder Contact
4	Female Solder Contact
C	Crimp Male Contact
M	Crimp Female Contact
1	Male Print Contact
3	Female Print Contact

UNITS ■mm □INCH	NAME: SNAP LATCH METAL 00 PLUG	
GENERAL TOLERANCES: (UNLESS SPECIFIED)		TITLE: CUSTOMER DWG.
		DWG NO: 010-0000-B93
4 PLACE ± **. INCH ± **. mm ± 0.10	APPD: Seawen 01/07'15	C
3 PLACE ± 0.30 ± **. mm ± 0.30	CHKD: Anne 01/07'15	SCALE: SHEET: REV.:
2 PLACE ± 0.50 ± **. mm ± 0.50	DRAWN: Alex 01/07'15	3.5/1 1/2 A
1 PLACE ± 0.50 ± **. mm ± 0.50		
ANGULAR: X°± 2° X°± **. mm ± 0.50		

A	ECN-150001	01/07'15	Seawen				
REV.	DESCRIPTION	DATE	APPD				



NOTE:

- MATERIAL AND FINISH
SHELL ASSEMBLY: COPPER ALLOY, OUTER SHELL AND COLLET NUT Cr PLATING, OTHER METALLIC COMPONENTS NI PLATING
INSULATOR: PEEK
CONTACT: COPPER ALLOY, GOLD PLATING
- ROHS COMPLIANCE
- PART NO.

Contact Pos.
02-04=2pin-4pin

Shell Material
0=Brass

CODE	Contact Type
2	Male Solder Contact
4	Female Solder Contact
C	CrImp Male Contact
M	CrImp Female Contact
1	Male Print Contact
3	Female Print Contact

Cable OD
22=OD:1.4mm-2.2mm
27=OD:2.2mm-2.7mm
35=OD:2.7mm-3.5mm

CODE	Key Angles
0	0°
A	30°
B	60°
J	45°

Collet Nut
2=Nut for Standard

UNITS ■mm □INCH	NAME: SNAP LATCH METAL 00 PLUG	TITLE: CUSTOMER DWG.
GENERAL TOLERANCES: (UNLESS SPECIFIED)	APPD: Seawen 01/07/15	DWG NO: 010-0000-B93
4 PLACE ±** ±.**	CHKD: Annle 01/07/15	SCALE: SHEET: REV: 3.5/1 2/2 A
3 PLACE ±0.10 ±.**	DRAWN: Alex 01/07/15	
2 PLACE ±0.30 ±.**		
1 PLACE ±0.50 ±.**		
ANGULAR: X*±2° X*±**		

REV.	DESCRIPTION	DATE	APPD
A	ECN-150001	01/07/15	Seawen