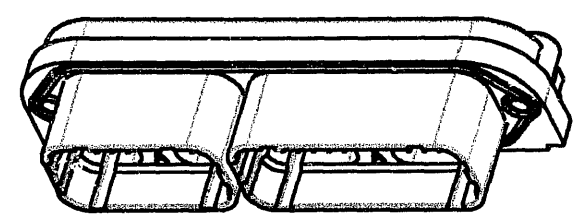
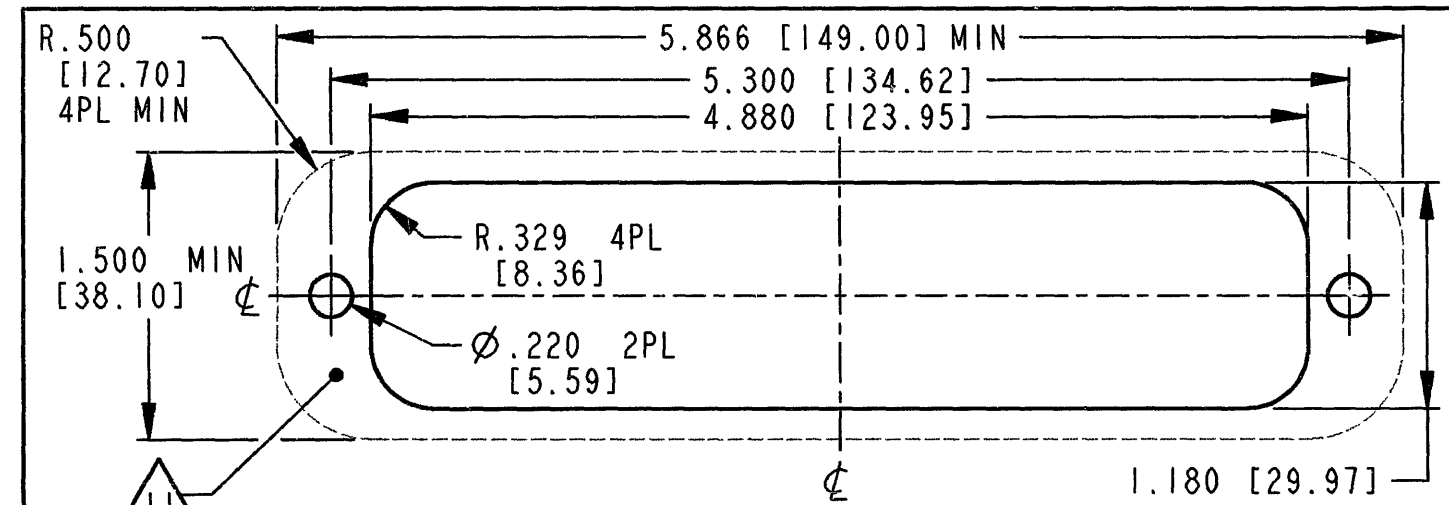
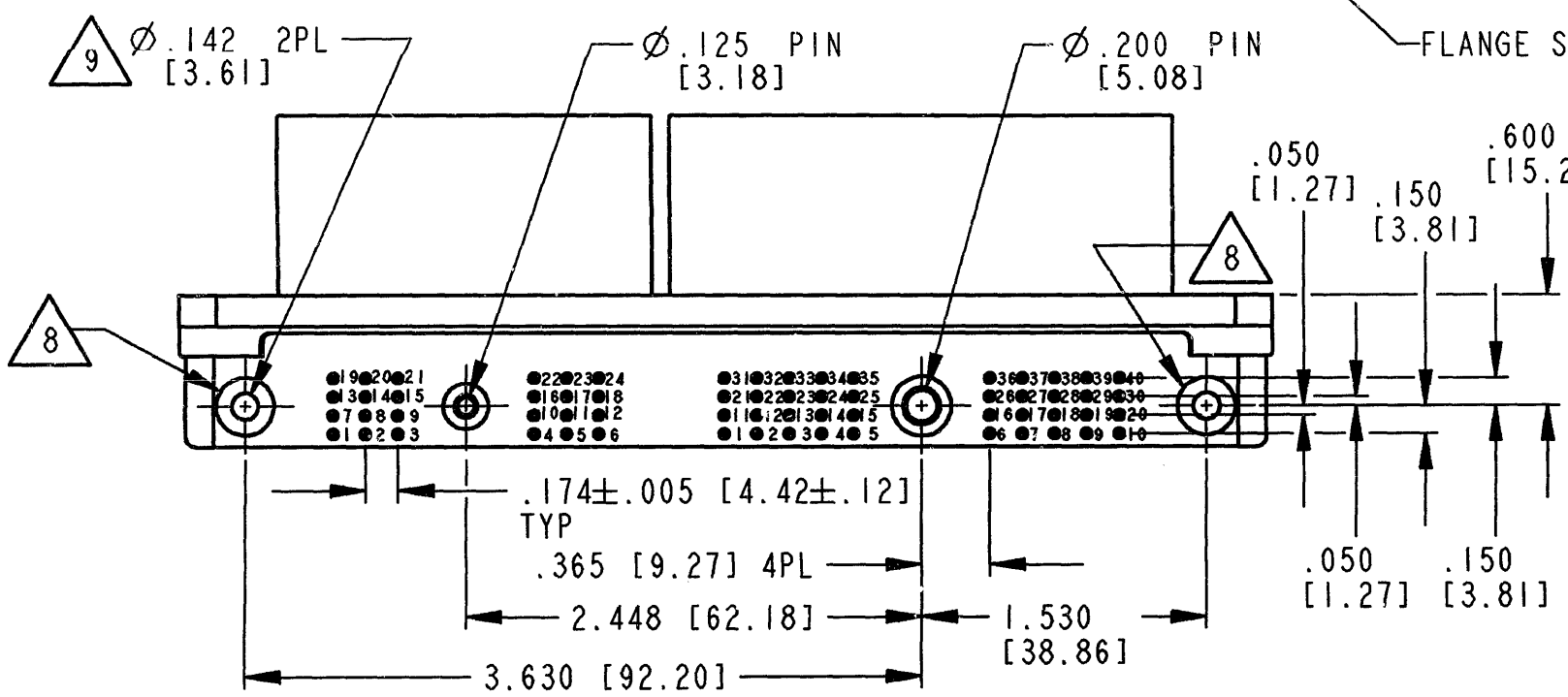
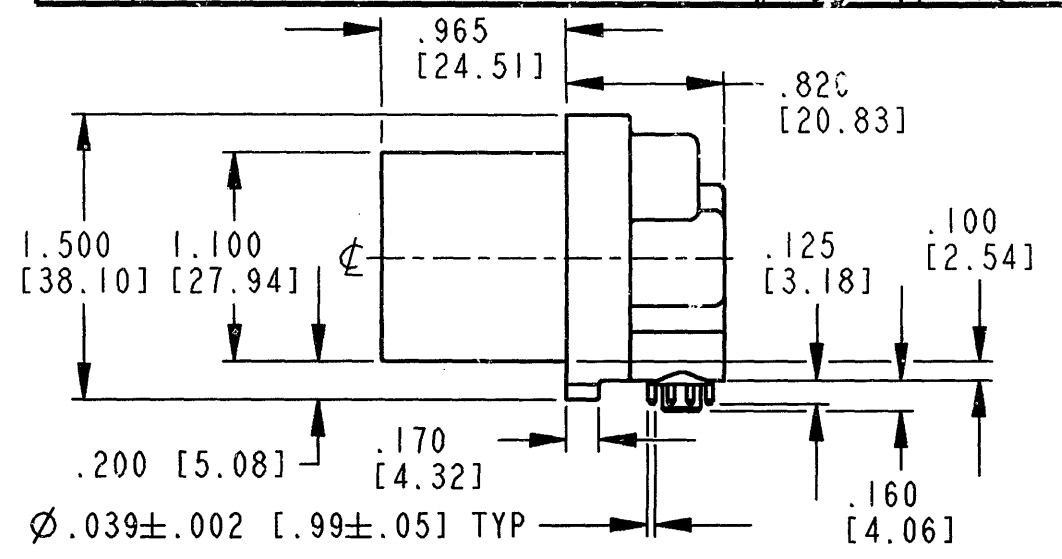


REV C DRC23-64PAA

REVISIONS			
SYM	DESCRIPTION	DATE	APPROVED
NC	NEW RELEASE PER E.O. AI4864	7/11/95	RDR
A	REVISED PER E.O. PI5240	3-3-97	RDR
B	REVISED PER E.O. PI6452	4/18/00	C. WOODRUFF
C	REVISED PER E.O. PI6859	12-28-00	RDR



3D VIEW



RECOMMENDED PANEL CUTOUT

9 RECOMMENDED SCREW: 7-18 [M4 X 1.79] THREAD-FORMING SCREW. TORQUE: 10-15 IN-LB [1.13-1.69 NM].

8 FLATNESS BETWEEN BOSSES: .005 [0.12] MAX.

7. THIS RECEPTACLE MATES WITH DRC26-24SA-\*\*\*\* AND DRC26-40SA-\*\*\*\* PLUG (\*\*\*\*=ALL MODIFICATIONS).

6. CONTACT PLATING - MATING SIDE: GOLD; PCB SIDE: TIN.

5. MATERIAL - PLASTIC (BLACK); INSERT: STEEL; SEAL: RUBBER.

4. RECEPTACLE IS SUPPLIED WITH 2 DUST CAPS (NOT SHOWN).

3 FLANGE SEAL (P/N 0513-029-6406) IS SHIPPED WITH RECEPTACLE.

2. DIMENSION TOLERANCE: ±.025 [0.64]; PANEL CUTOUT: ±.010 [0.25].

1. DIMENSIONS ARE IN INCHES [mm].

NOTES: UNLESS OTHERWISE SPECIFIED

11 SURFACE FINISH: 32 RMS OR BETTER; .005 [0.12]

10 RECOMMENDED SCREW: 8-16 [M5 X 2.24] THREAD-FORMING SCREW. TORQUE: 15-20 IN-LB [1.69-2.26 NM].

SIGNATURE & DATE	
DR	J. APOSTOL 3 JAN 2000
CHK	M. Parilla 12/28/00
PE	D. Meyer 12/28/00
APPD	R. Rad 12-28-00
SCALE	NONE WT

RECEPTACLE  
24 #20 SIZE CONTACTS &  
40 #20 SIZE CONTACTS  
KEY ARRANGEMENTS  
-A- & -A-  
DRC SERIES  
ENVELOPE

CP	MATL. CODE
The Deutsch Company DEUTSCH I.P.D. 3850 INDUSTRIAL AVE. HEMET, CALIF. 92545	
<b>B DRC23-64PAA</b>	
DWG SIZE	CODE 11139 SHEET   OF