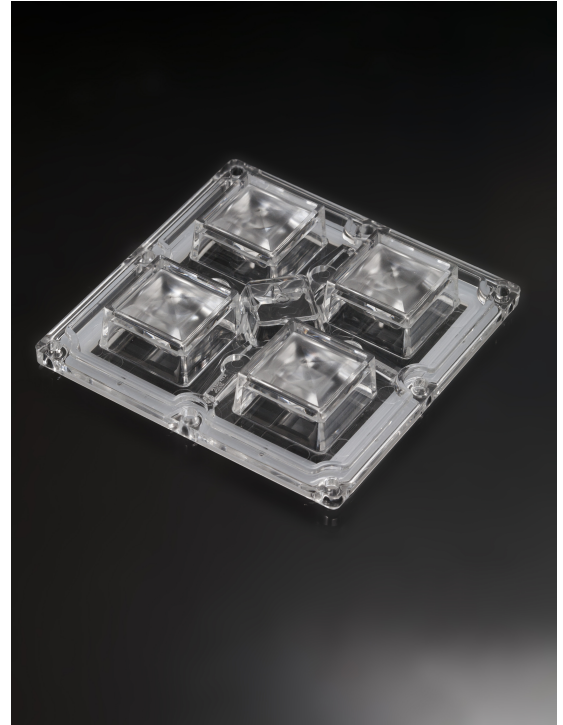


## HB-2X2MX-8-W

~50° wide beam. New revision.

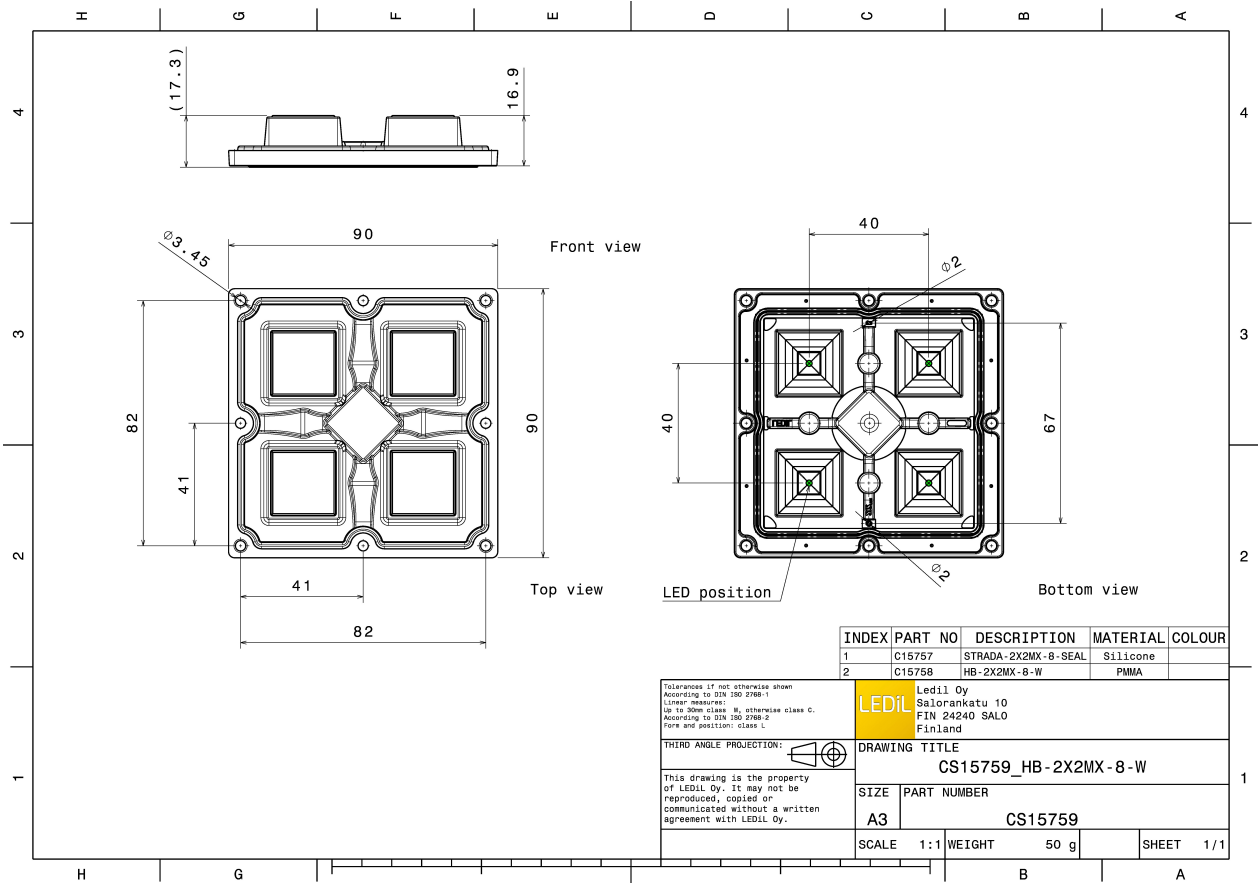
### TECHNICAL SPECIFICATIONS:

Dimensions	90.0 mm
Height	16.9 mm
Fastening	screw
Colour	clear
Box size	476 x 273 x 292 mm
Box weight	8.8 kg
Quantity in Box	156 pcs
ROHS compliant	yes ⓘ



### MATERIAL SPECIFICATIONS:

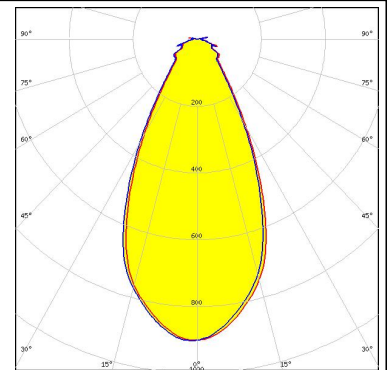
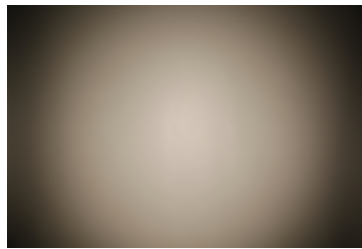
Component	Type	Material	Colour
HB-2X2MX-8-W	Multi-lens	PMMA	clear
STRADA-2X2MX-8-SEAL	Seal	Silicone	clear



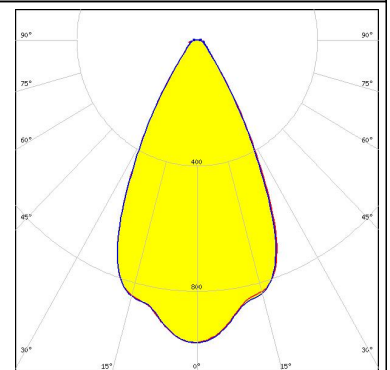
#### PHOTOMETRIC DATA (MEASURED):



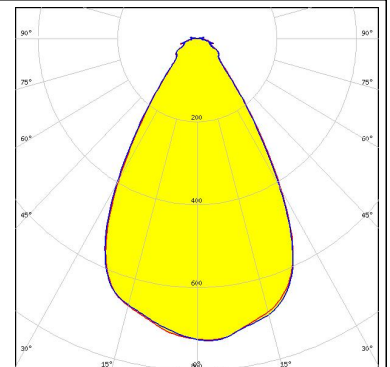
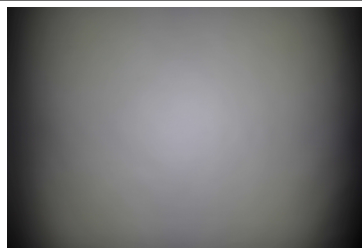
LED CXA/B 15xx  
 FWHM 51.0°  
 Efficiency 90 %  
 Peak intensity 0.900 cd/lm  
 LEDs/each optic 1  
 Light colour White  
 Required components:  
 Bender Wirth: 441 Typ 2x2MX HV



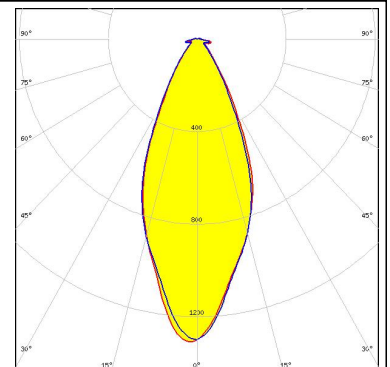
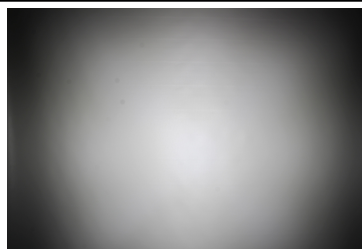
LED LUXEON M/MX  
 FWHM 54.0°  
 Efficiency 94 %  
 Peak intensity 0.970 cd/lm  
 LEDs/each optic 1  
 Light colour White  
 Required components:



LED NV9W149AM  
 FWHM 63.0°  
 Efficiency 94 %  
 Peak intensity 0.730 cd/lm  
 LEDs/each optic 1  
 Light colour White  
 Required components:




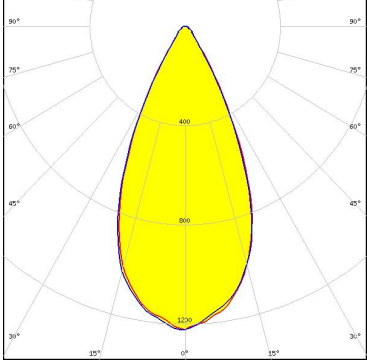
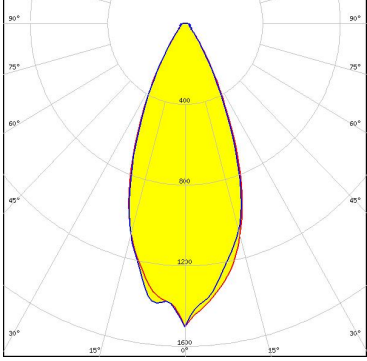

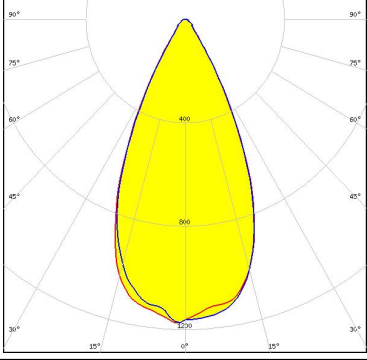
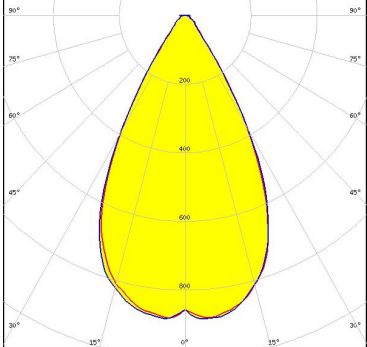
LED HiLOM SC16 (LH181B)  
 FWHM 44.0°  
 Efficiency 92 %  
 Peak intensity 1.300 cd/lm  
 LEDs/each optic 1  
 Light colour White  
 Required components:



### PHOTOMETRIC DATA (MEASURED):



#### PHOTOMETRIC DATA (SIMULATED):

<p> <b>bridgelux</b></p> <p>LED                      Bridgelux SMD 5050            FWHM                  48.0°            Efficiency              94 %            Peak intensity        1.250 cd/lm            LEDs/each optic    1            Light colour          White            Required components:</p>	
<p><b>CITIZEN</b></p> <p>LED                      CLU700/701            FWHM                  43.0°            Efficiency              88 %            Peak intensity        1.500 cd/lm            LEDs/each optic    1            Light colour          White            Required components:                Bender Wirth: 434 Typ 2x2MX HV</p>	
<p> <b>NICHIA</b></p> <p>LED                      NFMW48xA            FWHM                  49.0°            Efficiency              94 %            Peak intensity        1.180 cd/lm            LEDs/each optic    1            Light colour          White            Required components:</p>	
<p><b>PHILIPS</b></p> <p>LED                      Fortimo FastFlex LED 2x2 70x70 DC G4            FWHM                  58.0°            Efficiency              94 %            Peak intensity        0.930 cd/lm            LEDs/each optic    1            Light colour          White            Required components:</p>	

### GENERAL INFORMATION:

NOTE: The typical beam angle will be changed by different color, chip size and chip position tolerance. The typical total beam angle is the full angle measured where the luminous intensity is half of the peak value.

Due to use of high power COB's with this product, special attention to proper thermal design is highly recommended. LEDiL has no liability for direct, indirect or consecutive damages arising from the LEDiL products being used outside of the recommended temperature range.

### MATERIALS:

As part of our continuous research and improvement processes, and to ensure the best possible quality and availability of our products, LEDiL reserves the right to change material grades without notice.

### PRODUCT DATA USER AGREEMENT AND DISCLAIMER:

The measured data in the provided downloadable LEDiL Product Datasheets and Mechanical 2D-Drawings is rounded and provided as reference for planning. LEDiL Oy's optical specifications have been verified by conducting performance testing of the products in accordance with the company's quality system. The reported data are averaged results of multiple measurements with typical variation. LEDiL Oy reserves the right to without prior notification make changes and improvements to its products.

LEDiL Oy assumes neither warranty, nor guarantee nor any other liability of any kind for the contents and correctness of the provided data. The provided data has been generated with highest diligence but the provided data may in reality not represent the complete possible variation range of all intrinsic parameters. Therefore, in certain cases a deviation from the provided data could occur.

LEDiL Oy reserves the right to undertake technical changes of its products without further notification which could lead to changes in the provided data. LEDiL Oy assumes no liability of any kind for the possible deviation from any provided data or any other damage resulting from the usage of the provided data.

The user agrees to this disclaimer and user agreement with the download or usage of the provided files.

#### LEDiL Oy

Joensuunkatu 13  
FI-24240 SALO  
Finland

#### LEDiL Inc.

228 West Page Street  
Suite D  
Sycamore IL 60178  
USA

#### Local sales and technical support

[www.ledil.com/  
where\\_to\\_buy](http://www.ledil.com/where_to_buy)

#### Shipping locations

Salo, Finland  
Hong Kong, China

#### Distribution Partners

[www.ledil.com/  
where\\_to\\_buy](http://www.ledil.com/where_to_buy)