

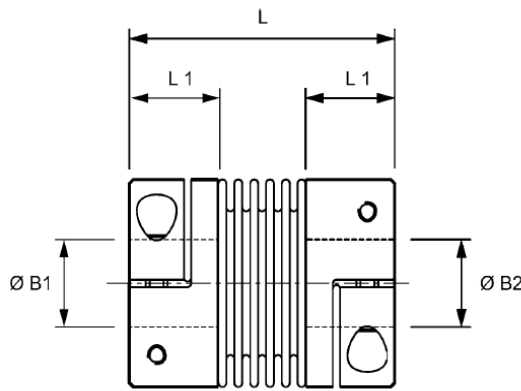
# Bellows Couplings HucoFlex K



Bellows Coupling with removable clamp shaft connection, short version

## ORDERING INFORMATION

RS PART No.	MANUFACTURER PART No.	BORES B1 & B2 [mm]
1967672	592.56.3838	14
1967674	592.56.4646	19
1967675	592.56.4949	22
1967676	592.56.5252	25
1967677	592.56.5454	28



## DIMENSIONS & INTERFACE DATA

Overall Diameter D [mm]	56
Overall Length L [mm]	65
Maximum permissible bore B1, B2 [mm]	30
Length of supported bore L1 [mm]	24.5
Fastener thread size	M6
Fastener tightening torque [Nm]	15
Coupling approx weight [g]*	215

## MATERIALS

Hubs **Aluminium alloy**  
 Bellows **Spring Quality**  
**Stainless Steel**  
 Fasteners **Alloy Steel**

## PERFORMANCE DATA

Maximum speed [ $\text{min}^{-1}$ ]	10300
Peak Torque [Nm]	30
Maximum shaft angular misalignment [deg]	1.5
Maximum shaft radial misalignment [mm]	0.15
Maximum shaft axial displacement [mm]	0.6
Torsional Stiffness [ $\text{Nm} \cdot \text{rad}^{-1}$ ]	38000
Radial Stiffness [N/mm]	720
Axial Stiffness [N/mm]	50

## Temperature Range

-30°C to +120°C

\*weight with max. bore