

INVINCIBLE[®] SPARE VISOR - WIRE GAUZE BOUND - 8"/20CM

PRODUCT CODE: ANA100-130-000

OFFERS GENERAL ROBUSTNESS PROTECTION AGAINST PARTICLES AT 12M/S

TECHNICAL SPECIFICATION

EYE & FACE PROTECTION

INSTRUCTIONS FOR USE

Before use, the visor should be fitted to an Invincible[®] Browguard or Visor Carrier and Chinguard (where applicable)

In use, ensure that the Visor Carrier and Industrial Safety Helmet or Browguard Faceshield fits comfortably and securely on the head

Ensure that the visor is in place before entering the hazard area

CONFORMITY

Meets the requirements of EN 166, EN 169 and EN 1731

EC Certificate Number 2406, issued by BSi Product Certification

Markings: EN 1731-S

DIMENSIONS OF OUTER PACKAGING

Quantity: 50

Height: 290mm

Width: 359mm

Length: 422mm

Weight: 8Kg (Approx.)

DIMENSIONS OF FACESHIELD

Height: 206mm

Width: 137mm

Length: 276mm

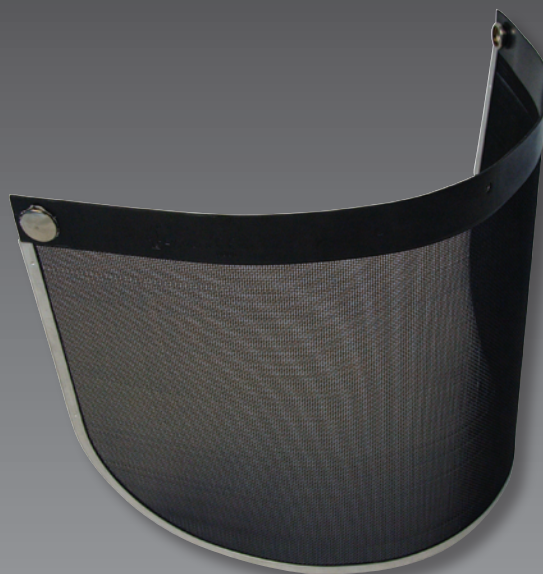
Weight: 140g (Approx.)

CLEANING & MAINTENANCE

The unit may be cleaned with soap and warm water and dried with a soft cloth

Do not clean with chemical or abrasive cleaners

Store out of direct sunlight, away from chemicals and not exposed to extremes of temperature



MATERIALS

Visor: Wire Mesh

Nickel Plated Brass Studs

Aluminium Binding

FACESHIELD FEATURES & PERFORMANCE

Offers general robustness protection against particles at 12m/s

LIMITATIONS OF USE

Protection will only be offered if the faceshield is fitted correctly
If the visor becomes scratched or damaged they should be replaced

Do not apply paint, solvents, adhesives or self-adhesive labels, except in accordance with instructions from the manufacturer

The harness of either a JSP Browguard or Industrial Safety Helmet, when in contact with the skin may cause allergic reactions to susceptible individuals

If this occurs leave the hazard area, remove the faceshield and seek medical advice

The Wire Mesh Visor is only suitable for use against large slow moving particles, such as wood chips