



RS PRO VMX-agility

110/230VAC Power Supply Unit User Guide

206-044



RS PRO VMX-agility

110/230VAC Power Supply Unit User Guide

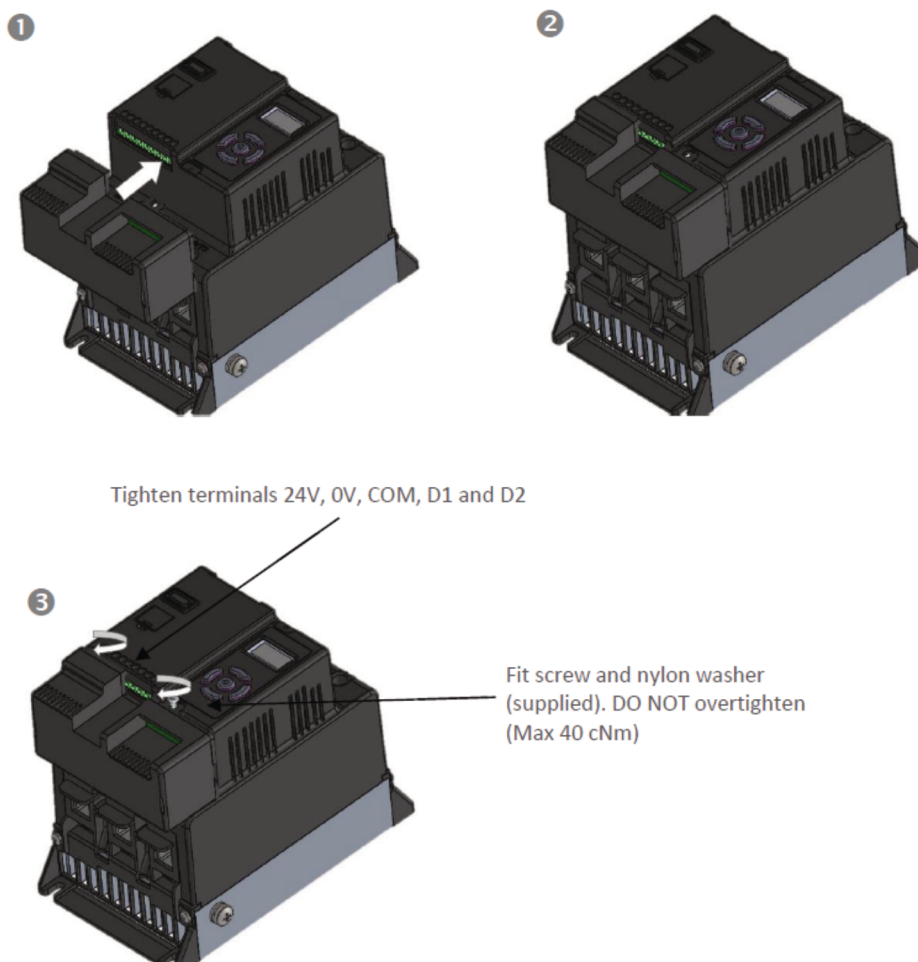
RS PRO
Birchington Road,
Corby,
Northants,
NN17 9RS

Fitting

206-044 is a dedicated mains power supply for the RS PRO VMX-agility soft-starter range. In addition to allowing for mains control voltage operation, the power supply also allows for mains voltage digital control (D1/D2).

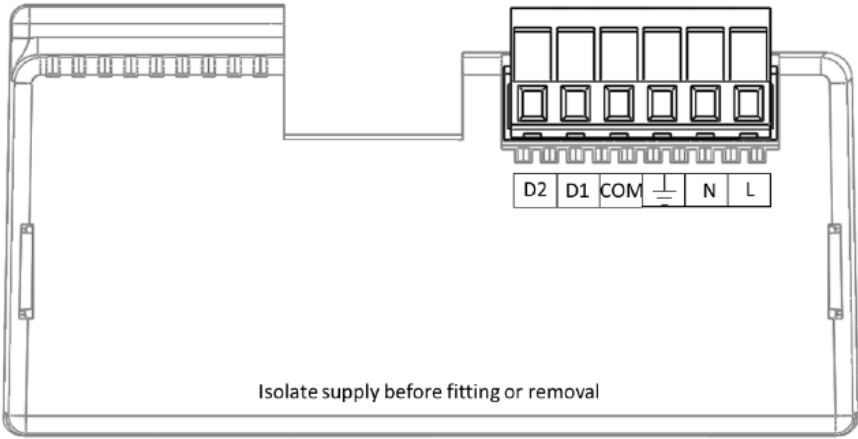
Refer also to the RS PRO VMX-agility Quick Start Guide for use with appropriate RS PRO VMX-agility model(s).

Ensure terminals 24V, 0V, D1 + D2 are fully open before installing 020-6044. Shown below:




NOTE: When the 206-044 installation is complete, control supply, D1 and D2 are provided on the power supply unit rather than the RS PRO VMX-agility unit.

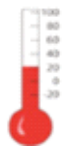
Connections



Control terminal functions

Terminal	Description	Default	Function Selectable	Note
L	Control Supply +Us	-	No	#1
N	Control Supply -Us	-	No	
	Main Supply Earth	-	No	
COM	Digital Inputs Common	-	No	
D1	Digital Input 1	-	No	#2
D2	Digital Input 2	-	Yes	#2
13 / 14	Main Contactor Control (Run Relay)	-	Yes	#3
21 / 22	Fault Relay	-	Yes	#3
NOTES:				
#1) 110VAC or 230VAC, 47-63Hz (protect with UL248 listed fuse rated maximum 4A).				
#2) The voltage applied to the digital inputs D1 and D2 must be the same as the supply voltage.				
#3) 250VAC, 2A, Cos ϕ = 0.5.				

Ambient operating temperature



-20°C (-4°F) to 60°C (140°F).

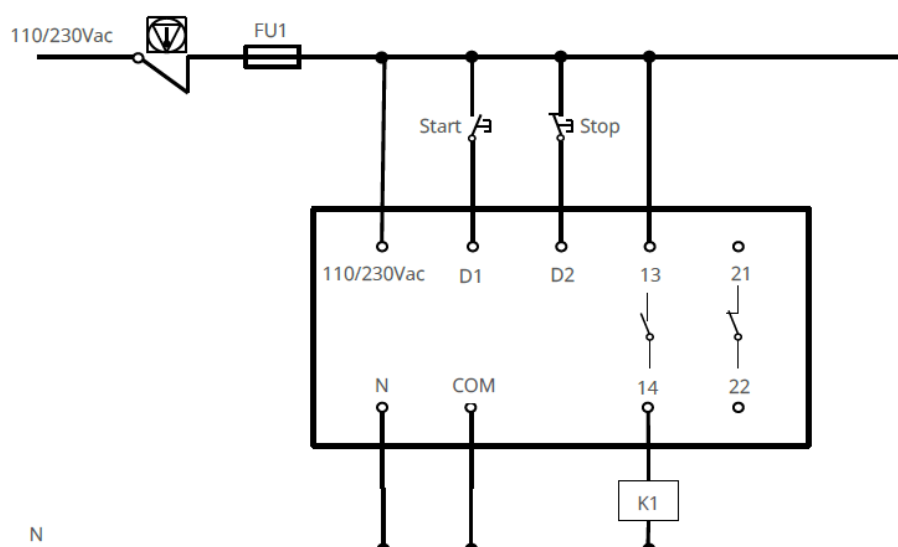
Wiring specifications

Terminal	Conductor Size		Torque	
	Metric	Imperial	Nm	lb-in
Control Terminals Cu STR 75°C only	0.2–1.5mm ²	24-16AWG	0.7	6.2

Wiring connections

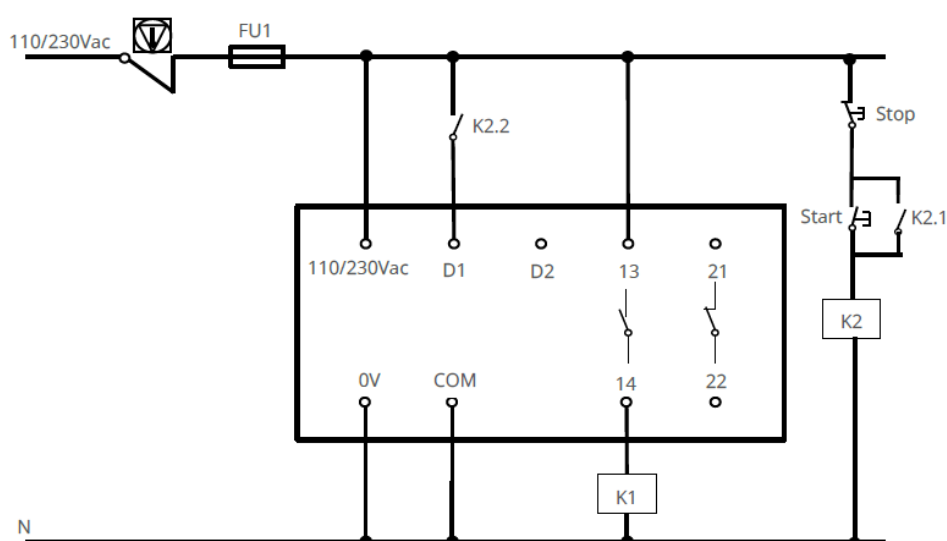
3 Wire Control Diagram

110/230VAC control supply (U_s)



2 Wire Control Diagram

110/230VAC control supply (U_s)



Notes

[illegible]

Notes

[illegible]



RS PRO VMX-agility

110/230VAC Power Supply Unit User Guide