

FEATURES

- Momentary, stainless-steel push-button switch
- Panel cut out size of 12 mm (diameter)
- Contact configuration of single pole single throw (SPST)
- Flat, round actuator that is silver in colour
- LED colour of blue
- Panel cut out diameter of 12 mm
- Contact current rating of 15 mA
- Panel mount
- Contact DC voltage rating of 36 V
- Illuminated switch
- Quick connect terminal type
- Silver alloy contact material
- IP rating of IP65 and IP67

RS PRO Single Pole Single Throw (SPST) Momentary Blue LED Push Button Switch, IP65, IP67, 12 (Dia.)mm, Panel Mount, 12V

RS Stock No.: 111-6526



RS Professionally Approved Products bring to you professional quality parts across all product categories. Our product range has been tested by engineers and provides a comparable quality to the leading brands without paying a premium price.

Product Description

The RS PRO stainless-steel push-button switch with flush actuators is a durable anti-vandal component often used in security keypads. It has a flat actuator that's illuminated with a blue LED light. This SPST (single-pole single throw) panel-mount switch features silver alloy contacts that offer excellent conductivity. It's IP65 and IP67 rated, meaning it's completely dust-tight and protected from water. What's more, you'll find it's vandal resistant and designed to withstand above average wear and tear. The panel-mount switch has a cut out diameter of 12 mm and a voltage rating of 12 V.

General Specifications

Type	LED
Switch Operation	Momentary
Contact Configuration	Single Pole Single Throw (SPST)
Illuminated	Yes
LED Colour	Blue
Actuator Colour	Silver
Actuator Shape	Round
Case Colour	Natural
Applications	Test Equipment, Telecommunications, Networking, Handheld Appliances

Material Characteristics	
Base	Glass filled nylon 6/6 (UL 94V-0)
Contact	Nickel plated brass
Terminals	Nickel plated brass
Hardware	Nut (nickel plated brass)

Electrical Specifications

Voltage Rating	12V ac/dc
Terminal Type	Quick Connect
Actuator Type	Flat

Contact Specifications	
Contact DC Voltage Rating	36V
Contact Current Rating	15mA
Insulation Resistance	1,000M-ohms min. @ 500VDC
Dielectric Strength	3,000VAC for 1 minute
Electrical Life	10,000cycles at full load

Mechanical Specifications

Mounting Type	Panel Mount
Panel Cut Out Size	12(Dia.)mm
Panel Cut Out Diameter	12mm
Torque	5Nm to 14Nm

Operation Environment Specifications

Storage Temperature	-20°C to 55°C
Maximum Operating Temperature	55°C
Minimum Operating Temperature	-20°C

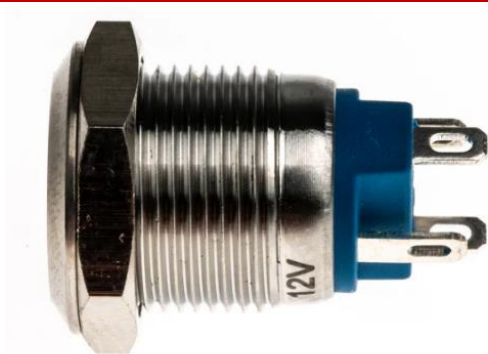
Protection Category

IP Rating	IP65, IP67
-----------	------------

Approvals

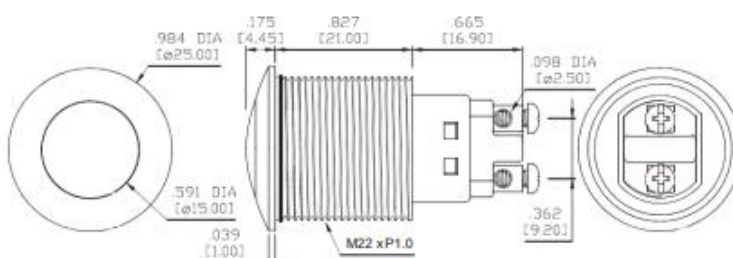
Compliance/Certifications	RoHS
---------------------------	------





Model No.	Type
01	OFF MOM

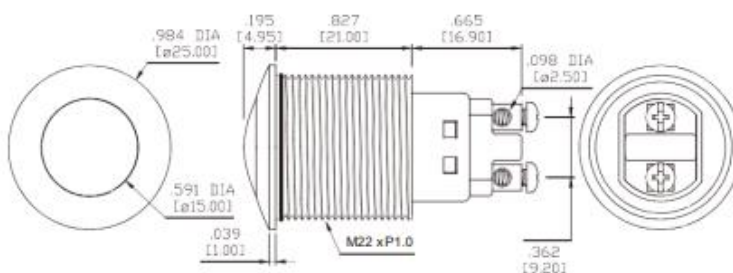
Schematic



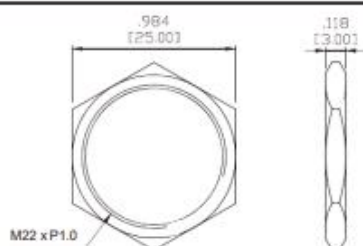
IP65 Front panel protection

Model No.	Type
01	OFF MOM

Schematic



NUT



O-RING

