



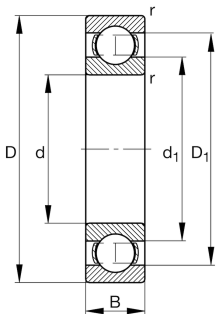
FAG

61815-Y

Deep groove ball bearing

Deep groove ball bearing 618..-Y, single row, brass sheet metal cage

Technical information



Your current product variant

Sealing	Without	Not sealed
Cage	Y	Brass sheet metal
Tolerance class	PN	Normal (PN)
Dimensional / heat stabilization	S0	Rings dimensional stabilized up to 150°
Lubricant	Without	Bearing not greased
Radial internal clearance	CN (Group N)	Normal internal clearance
Bore type	Z	Cylindrical

Main Dimensions & Performance Data

d	75 mm	Bore diameter
D	95 mm	Outside diameter
B	10 mm	Width
C <sub>r</sub>	13,700 N	Basic dynamic load rating, radial
C <sub>0r</sub>	13,400 N	Basic static load rating, radial
C <sub>ur</sub>	890 N	Fatigue load limit, radial
n <sub>G</sub>	13,000 1/min	Limiting speed
n <sub>gr</sub>	4,950 1/min	Reference speed
≈m	0.15 kg	Weight



Mounting dimensions

$d_{a\min}$	78.2 mm	Minimum diameter shaft shoulder
$D_{a\max}$	91.8 mm	Maximum diameter of housing shoulder
$r_{a\max}$	0.6 mm	Maximum fillet radius

Dimensions

$r_{\min}$	0.6 mm	Minimum chamfer dimension
$D_1$	88.57 mm	Shoulder diameter outer ring
$d_1$	81.6 mm	Shoulder diameter inner ring

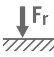
Temperature range

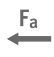
$T_{\min}$	-30 °C	Operating temperature min.
$T_{\max}$	150 °C	Operating temperature max.


Calculation factors


$f_0$	16.1	Calculation factor
-------	------	--------------------


Characteristics


- 

Radial load
- 

Axial load in one direction
- 

Axial load in two directions
- 

Grease Lubrication
- 

Oil Lubrication
- 

Not sealed