



YOUR  
ADVANTAGE

- Ergonomic design. A real asset when operating and reading.
- Suitable for numeric keypads and membrane keyboards.
- Prepared for the assembly of eurocards 100 x 160 mm.
- Recessed control area to protect the membrane keyboard.
- Versions with ample space for large assemblies.
- Raised section giving space for easy installation of cable grommets and plug connectors.
- Version with attachment for digital readouts, measuring equipment, encoders etc.



## ERGONOMIC AND FUNCTIONAL.

The OKW desk case range covers many different fields of application.

Choose a case that will fully meet your specific requirements concerning tilt and size of the control panel.

We perform low-cost machining of the aluminium front panels according to your specific requirements.

## APPLICATIONS

Measuring and control engineering, systems for data collection on the job and on machines, medical and laboratory technologies, industrial control systems, communications equipment, access and security controls, data systems engineering.

## EMC

Cases marked with  $\nabla$  are available with aluminium metallization on demand. A snap-in pin is used for secure bonding. See pages 207-209.

MODIFICATIONS  
AS PER  
CUSTOMER'S  
REQUIREMENTS

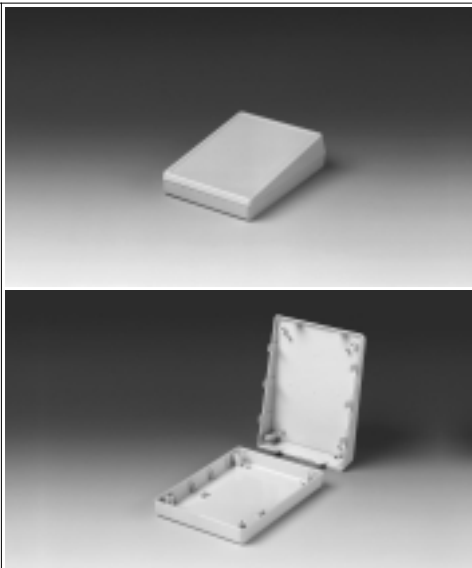
Machining on modern CNC-controlled machines. Lacquering. Silk screen and tampo printing. See pages 210-213.

## DESIGN

Two-part case with closed top. Control area recessed by 0.031".

Fastening pillars for PCBs or keyboards in the top and base.

Case parts are assembled by 4 self-tapping screws.



Suitable for numeric keypads and membrane keyboards.

## STANDARD COLOURS

Off-white, RAL 9002.

Black, RAL 9005.

Please refer to colour chart on page 214.

## SPECIAL COLOURS

Any desired colour.

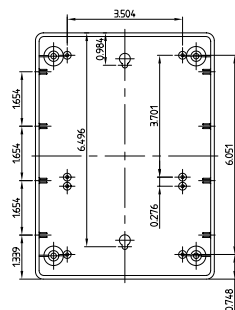
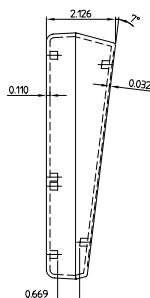
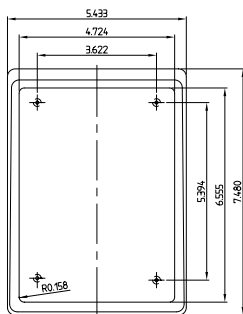
## MATERIAL

ABS (UL 94 HB).

Also available in other materials on request. Please refer to the specifications on pages 215-217.

Detailed drawing available on demand in dwg or dxf format.

⊕ ⊕ = Type of screw for case fixing: cross head



⊕ Z (PZ1)

| CASE (Part-No. with ‡ see EMC page 104) |       |             |  |           | Part-No.      |
|---|-------|-------------|--|-----------|---------------|
| Outside dimensions in inch              |       |             |  | Colour    |               |
| W                                       | D     | H           |  |           |               |
| 5.433                                   | 7.480 | 2.126/1.260 |  | off-white | A 05 14 007 ‡ |
| 5.433                                   | 7.480 | 2.126/1.260 |  | black     | A 05 14 009 ‡ |

Wide range of applications as desk-top cases. Fine textured surface.

## STANDARD COLOURS

### DESK CASE 190:

Off-white, RAL 9002.  
Black, RAL 9005.

### DESK CASE 190 F / H:

Top part off-white, RAL 9002,  
base part pebble grey,  
RAL 7032.

Please refer to colour chart on page 214.

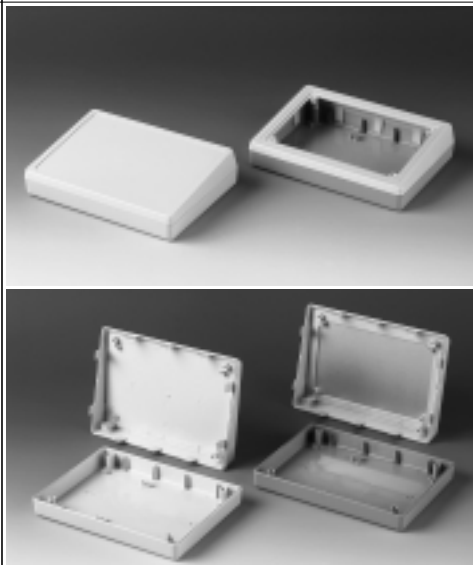
## SPECIAL COLOURS

Any desired colour.

## MATERIAL

ABS (UL 94 HB).

Also available in other materials on request. Please refer to the specifications on pages 215-217.



## DESIGN

Two-part case, range of 3 different versions. Screw pillars in the base part and guide ridges for horizontal and vertical mounting of PCBs. Front panel as accessory. Case parts are assembled by 4 self-tapping screws.

### VERSION I

#### DESK CASE 190

With closed top part. Control area recessed by 0.039".

### VERSION II

#### DESK CASE 190 F

Top prepared for front panel mounting. Flat base.

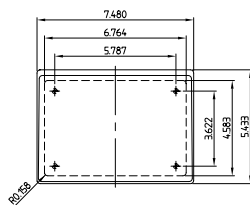
### VERSION III

#### DESK CASE 190 H

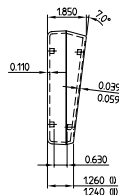
Top for front panel mounting. Higher base.

Detailed drawing available on demand in dwg or dxf format.

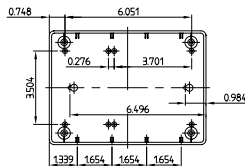
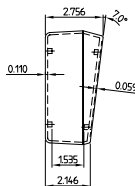
⊕ ⊕ = Type of screw for case fixing: cross head



Version I, II



Version III



⊕ Z (PZ1)

| Part-No.      | CASE (Part-No. with ♣ see EMC page 104) |  |                         | MODIFICATIONS<br>AS PER<br>CUSTOMER'S<br>REQUIREMENTS |
|---------------|---|--|-------------------------|---|
|               | Desk case                               | Outside dimensions in inch<br>W            D            H                  | Colour-combination      |   |
| A 05 19 007 ♣ | 190 (I)                                 | 7.480    5.433    1.850 / 1.260  | off-white               |   |
| A 05 19 009 ♣ |   | 7.480    5.433    1.850 / 1.260  | black                   |   |
| A 90 86 265 ♣ | 190 F (II)                              | 7.480    5.433    1.850 / 1.240  | off-white / pebble grey |   |
| A 90 86 365 ♣ | 190 H (III)                             | 7.480    5.433    2.756 / 2.146  | off-white / pebble grey |   |
|               | ACCESSORIES                             |  |                         |   |
|               | Article                                 | Version (for desk cases 190 F and H only)                                  |                         |   |
| A 91 86 001   | Front panel                             | matt anodized aluminium 6.358 x 4.173 x 0.059" (screws supplied with case) |                         |   |
|               |   |  |                         | See pages 210-213.                                    |

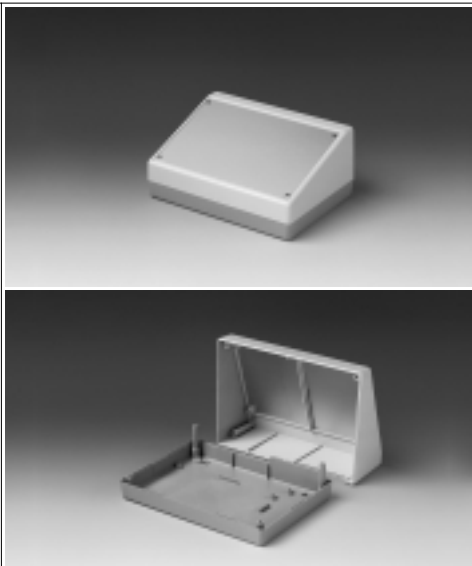
See pages 210-213.

## DESIGN

Two-part case. Matt anodized aluminium front panel available as accessory.  
Fastening pillars with brass bushes (M3) for mounting PCBs in the base. Raised rear area to accommodate plugs.

## ASSEMBLY

Case parts are assembled by 4 threaded screws.



For measuring and control equipment. With space for large assemblies.

## STANDARD COLOURS

Top part off-white, RAL 9002, base part pebble grey, RAL 7032.

Please refer to colour chart on page 214.

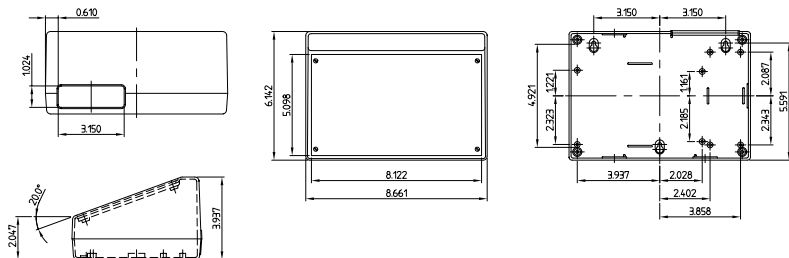
## SPECIAL COLOURS

Any desired colour.

## MATERIAL

High-impact polystyrene (UL 94 HB). Also available in other materials on request. Please refer to the specifications on pages 215-217.

Detailed drawing available on demand in dwg or dxf format.



## MODIFICATIONS AS PER CUSTOMER'S REQUIREMENTS

See pages 210-213.

### CASE

Outside dimensions in inch

W D H Colour-combination

8.661 6.142 3.937 / 2.047 off-white / pebble grey

### ACCESSORIES

Article Version

Front panel matt anodized aluminium 8.091 x 5.094 x 0.059" (screws supplied with case)

Part-No.

A 90 82 065

A 91 80 001

Flat, modern styling.  
Versatile in use.

Particularly applicable for  
control equipment and  
mounting of keyboards.

Version with attachment for  
digital readouts, measuring  
equipment, encoders etc.

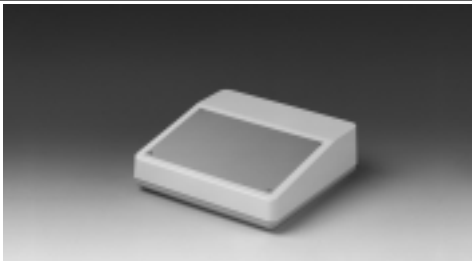
## STANDARD COLOURS

Top part off-white, RAL 9002,  
base part pebble grey,  
RAL 7032.

Please refer to colour chart  
on page 214.

## MATERIAL

High-impact polystyrene  
(UL 94 HB). Also available in  
other materials on request.  
Please refer to the speci-  
fications on pages 215-217.



Version F

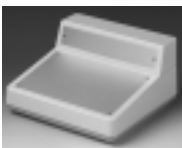


## DESIGN

Case with matt anodized  
aluminium front panel.  
The base part has fastening  
pillars with inserts M3 for  
the mounting of PCBs.  
Raised panel at the rear for  
cable grommets and plug  
mounting.

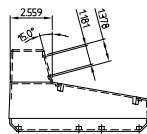
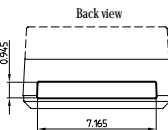
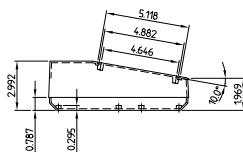
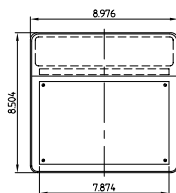
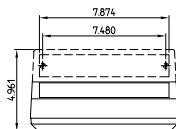
## ASSEMBLY

Case parts are assembled by  
4 threaded screws. The  
attachment will snap into the  
top of the assembly.

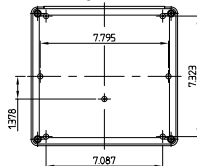


Version H

Detailed drawing available on demand in dwg or dxf format.



Bottom part inside view



| Part-No.    | CASE        |  |       | Colour-combination | MODIFICATIONS<br>AS PER<br>CUSTOMER'S<br>REQUIREMENTS<br><br>See pages 210-213. |                         |
|-------------|-------------|--|-------|--------------------|---|-------------------------|
|             | Version     | Outside dimensions in inch   |       |                    |   |                         |
|             | W           | D  | H     |                    |   |                         |
| A 90 84 165 | F           | 8.976  | 8.504 | 2.992 / 1.969      |   | off-white / pebble grey |
| A 90 85 165 | H           | 8.976  | 8.504 | 4.961 / 1.969      |   | off-white / pebble grey |
| ACCESSORIES |             |  |       |                    |   |                         |
| Article     |             | Version  |       |                    |   |                         |
| A 91 84 001 | Front panel | matt anodized aluminium 7.874 x 5.118 x 0.059" (screws supplied with case) |       |                    |   |                         |
| A 91 85 001 | Front panel | matt anodized aluminium 7.874 x 1.378 x 0.059" (screws supplied with case) |       |                    |   |                         |

MODIFICATIONS  
AS PER  
CUSTOMER'S  
REQUIREMENTS

See pages 210-213.