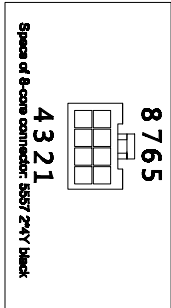
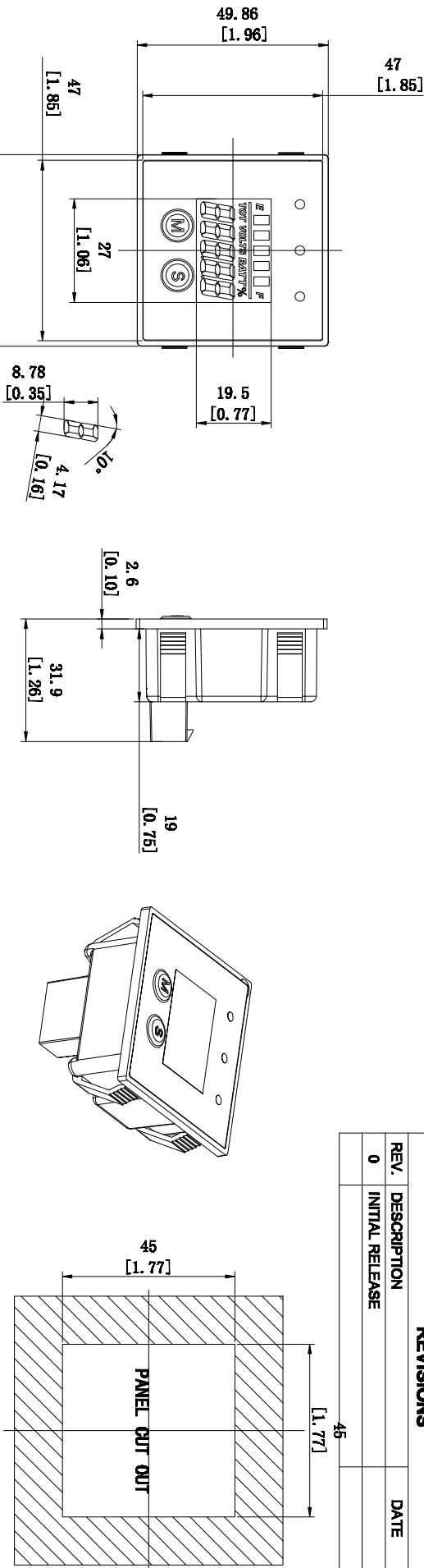


REVISIONS			
REV.	DESCRIPTION	DATE	INIT
0	INITIAL RELEASE		



1	Negative pole of power supply, connected to the negative pole of battery
2	Control part of high level timing
3	Key switch, connected to the positive pole of battery
4	Positive pole of power supply, connected to the positive pole of battery
5	Output part of 5V voltage signal
6	Communication port, TTL level, unused
7	Communication port, TTL level, unused
8	Control part of low level timing



Items	Parameters
Housing material	ABS
Product dimension	49.8*49.8*31.9mm
Display window size	27*19.5mm
Operating voltage	DC 8-60 V
Operating temperature	-20℃ TO 65℃
Waterproof rate ture	IP65
Voltage accuracy ure	<±0.5%
Timing accuracy	24H error <±10S
Weight/accuracy	52g



NINGBO JIANGDE RUN LEADER ELECTRONICS CO., LTD
WWW.RUN-LEADER.COM

Battery Indicator

1. Display:
 - 3x6-color light(red & green).
 - LCD display, viewing angle is 6°Clock.
 - Working temperature of LCD screen: -30℃ -80℃.
 - Backlight color: white.
2. Battery testing function:
 - It can be applied to 9 types of voltage discharge curves.
 - When key switch is turned on, the gauge automatically recognizes the battery voltages from 12V/24V/36V/48V.
 - The delay display function of battery power: The battery power is going down one LED bar by one LED bar when discharging. The delay time among each LED bar is 155 seconds. The battery power is going up one LED bar by one LED bar when charging. The delay time among each LED bar is 200 seconds..
3. Voltage function:
 - Low voltage reminder, setting range: 8.5-58V or it can be closed;
 - High voltage reminder, setting range: 12-60V or it can be closed;
 - Measure the current voltage in real time; display like xx.xxV;
 - Voltage reminding method: LED reminding.
4. Timing function:
 - Timing method: connect the positive pole or negative pole of battery to start timing.
 - Timing range: 0-99999H; when the total hours range is 0-99999H, the timing accuracy is 0.1H; when the total hours range is 10000-99999H, the timing accuracy is 1H.
 - Initial time setting: The initial time value can be preset within 1H of engine or equipment operation.
 - SVC time: setting range is 0-2000H;
 - SVC remind method: LED reminding.
5. Backlight function: backlight operation mode can be set into ALWAYS ON, AUTOMATICALLY or OFF.
6. Output function: when the battery power is ≥10%, it will output 5V signal; when the battery power is <10%, it will output 0V signal;
7. Data save: The unit has built-in EEPROM, so the data will be stored after unit is powered off and the storage time is up to 20 years.

UNLESS OTHERWISE SPECIFIED DIMENSIONS ARE IN INCHES TOLERANCES ARE: .1 .02 .005 1°	DRAWN	DATE	 Runleader® NINCHO JINMOSE RUN LEADER ELECTRONICS CO., LTD WWW.RUN-LEADER.COM			
	CHECKED	DATE				
	APPROVED	DATE				
	PROJECTED VIEWS ARE 3RD ANGLE					
	TITLE Battery Indicator					
COMPUTER GENERATED DRAWING-NO MANUAL CHANGES ALLOWED	FINISH N/A		SIZE A	PART NO. RL-B1022		
	DO NOT SCALE DRAWING	STATUS DS4_DESIGN	SCALE NTS	SHEET 1 OF 1	PROJECT NO. 010	REVISION 0