



## CHIP ANTENNA RRCA- B3-1204-W-001

### ■ SPECIFICATION


PARAMETERS	VALUE
Frequency Range	855 ~ 885 MHz
Peak Gain, typ	1.0 dBi
Return Loss, max	-10 dB
VSWR, max	2.0
Polarization	Linear
Efficiency (Baes on GND 90x120mm2)	60 %
Azimuth Beamwidth	Omni-directional
Feed Impedance	50 Ω
Rated Power, max	1 W
Operating Temperature	-40 ~ +85°C

### ■ MECHANICAL SPECIFICATION

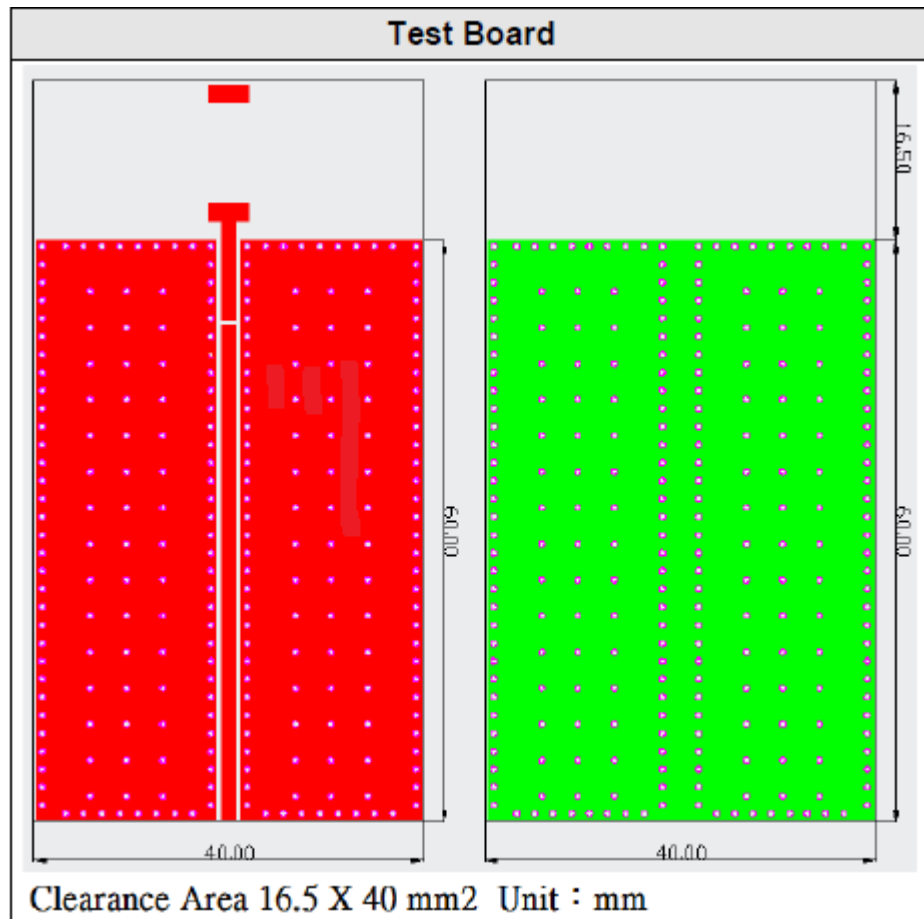
Figure	Symbol	Dimension (mm)
<p>The figure shows three views of the chip antenna: TOP VIEW, SIDE VIEW, and BOTTOM VIEW. The TOP VIEW shows a rectangular chip with length L and width W. The SIDE VIEW shows the thickness T. The BOTTOM VIEW shows two vertical green strips, each with height A and width B, separated by a distance C. The total length of the chip is L.</p>	L	12.0 ± 0.15
	W	4.0 ± 0.20
	T	1.55 ± 0.05
	A	4.0 ± 0.20
	B	0.8 ± 0.08
	C	10.4 ± 0.15



# CHIP ANTENNA RRCA- B3-1204-W-001

Figure	PIN	Connection
	1	Feeding
	2	Soldering

## ■ TEST BOARD AND MATCHING CIRCUIT

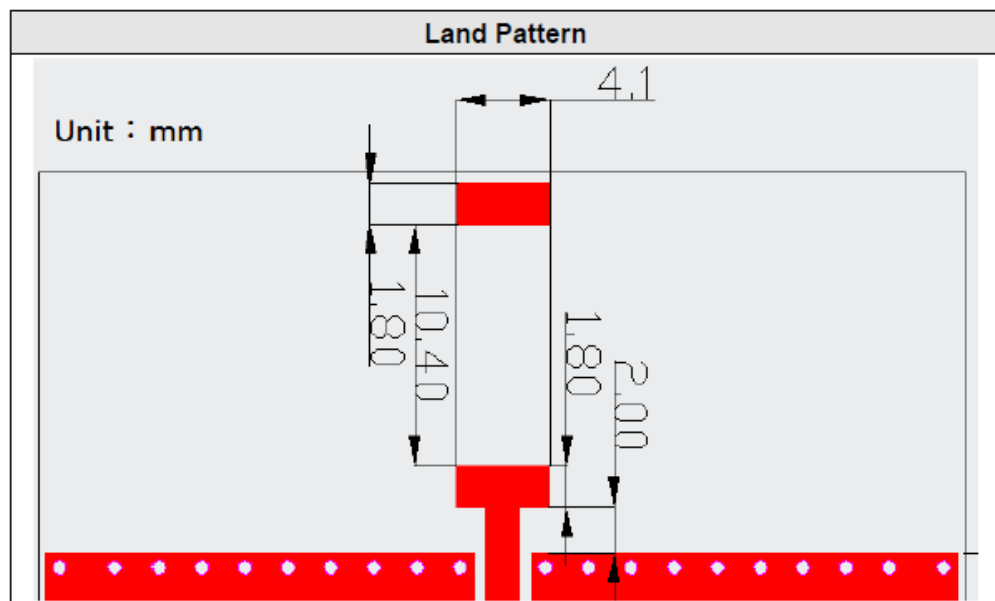




# CHIP ANTENNA

## RRCA- B3-1204-W-001

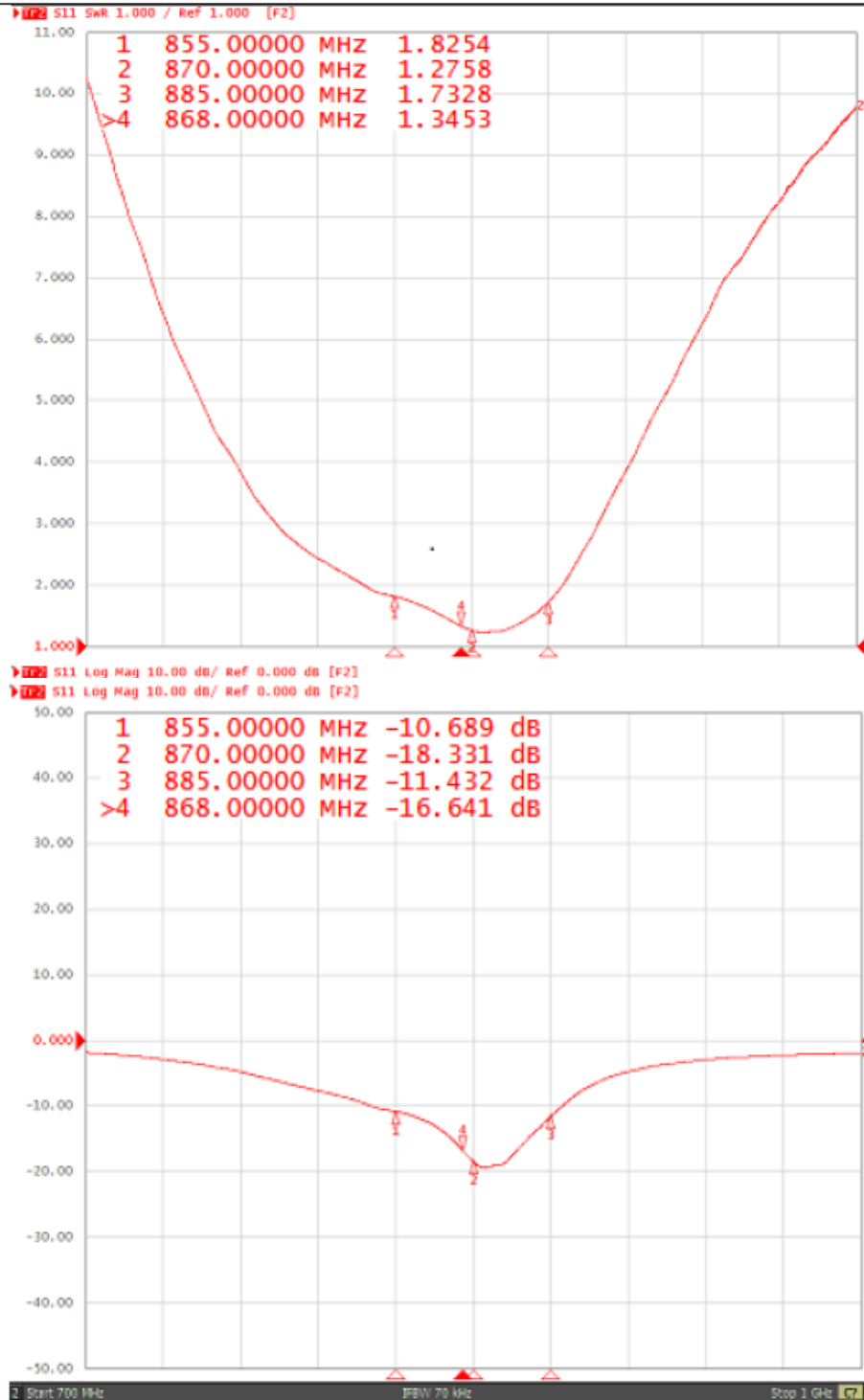
### Land Pattern





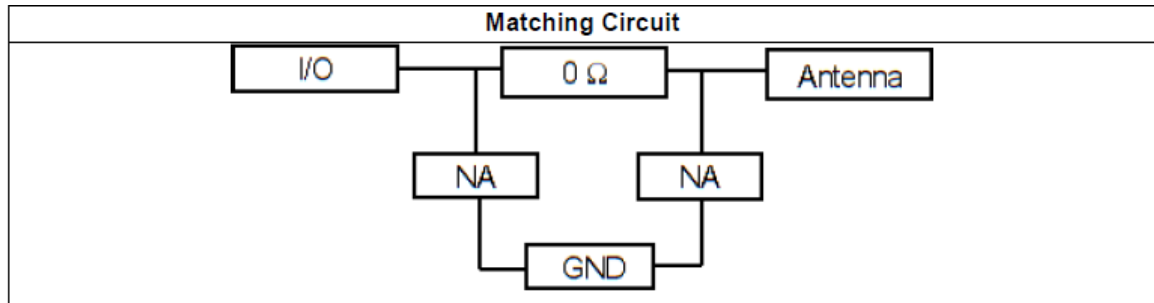
# CHIP ANTENNA RRCA- B3-1204-W-001

## Antenna S11 & SWR on Test Board

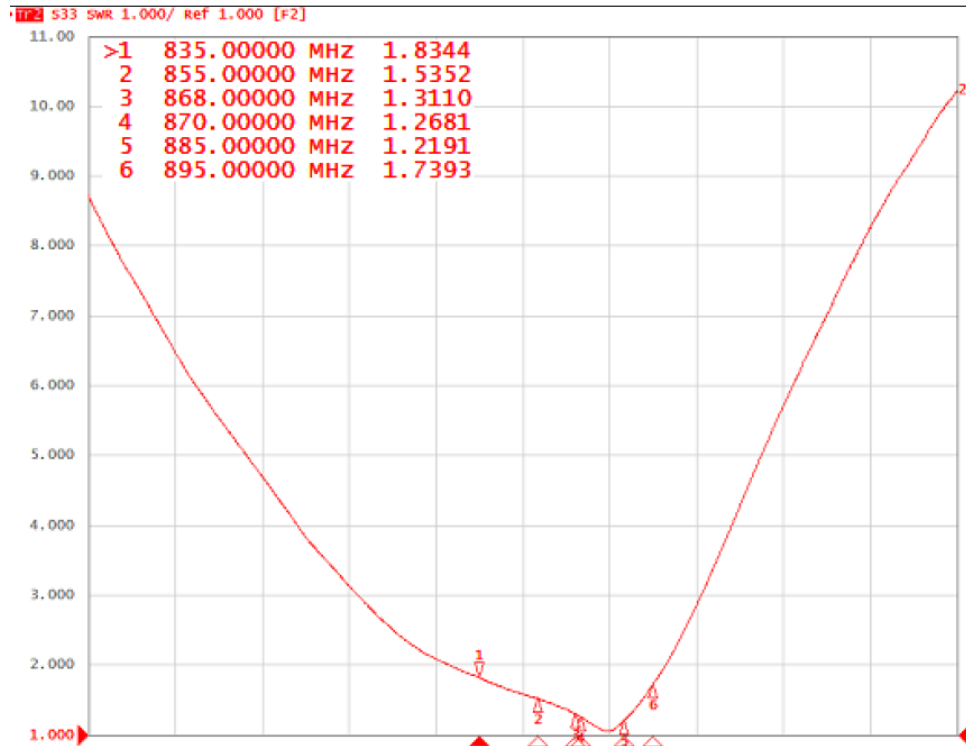




# CHIP ANTENNA RRCA- B3-1204-W-001

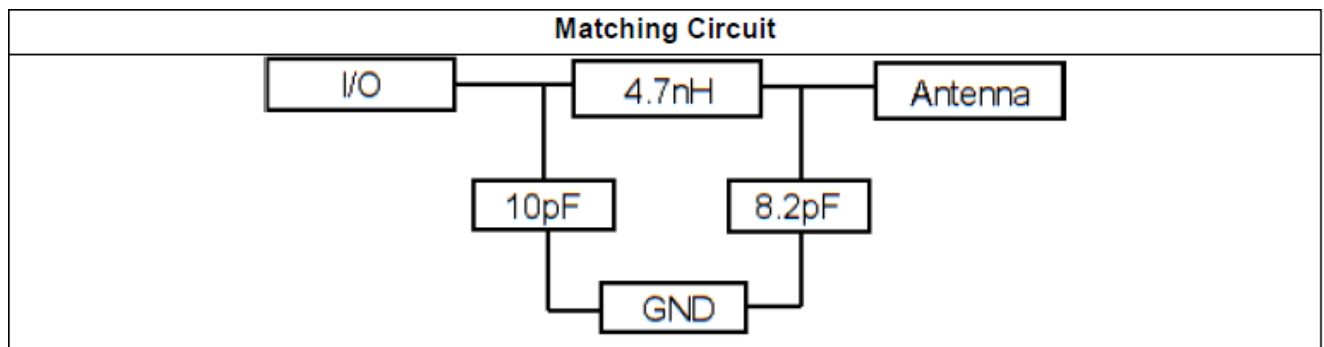
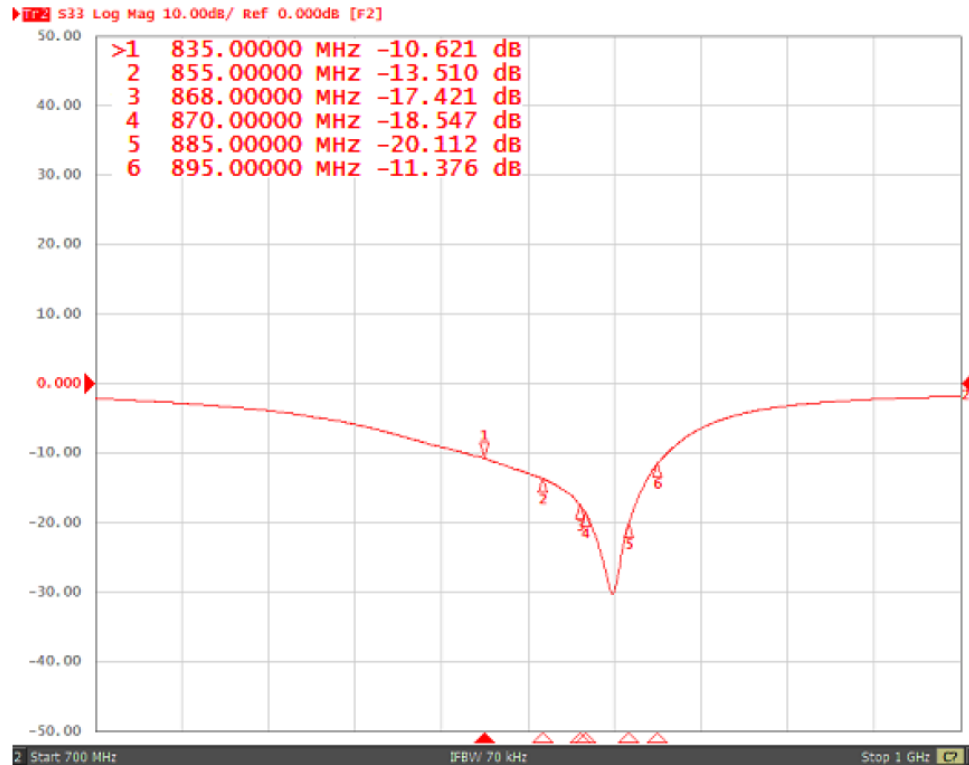


### Antenna S11 & SWR on Test Board





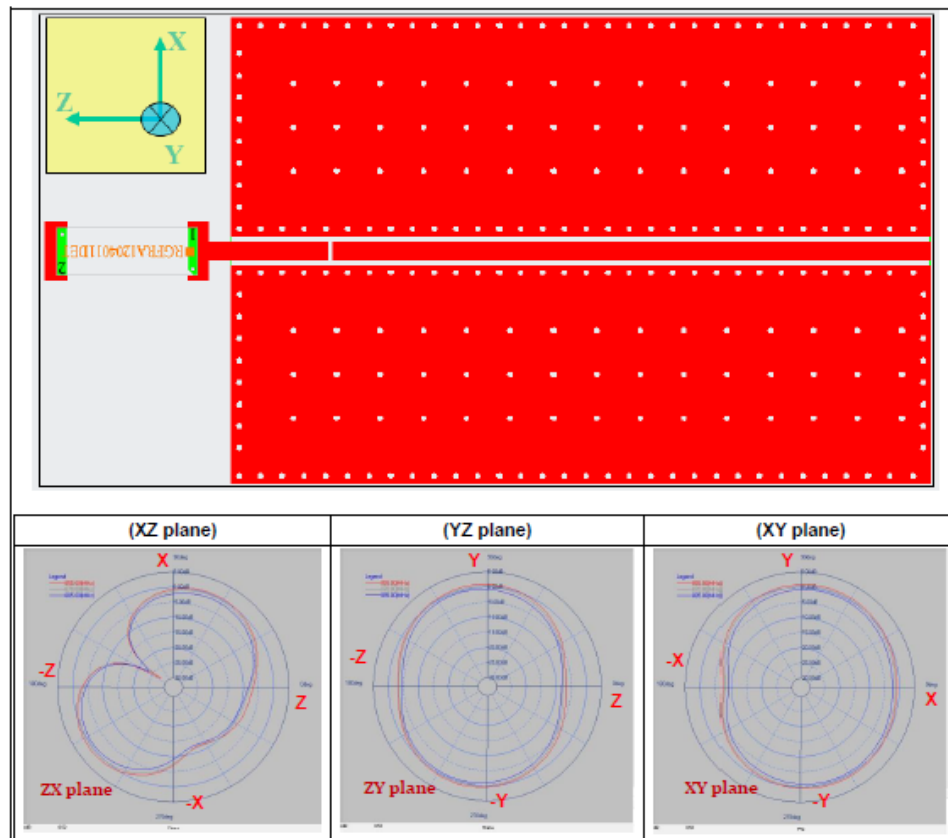
# CHIP ANTENNA RRCA- B3-1204-W-001





# CHIP ANTENNA RRCA- B3-1204-W-001

## ■ RADIATION PATTERN



Frequency [MHz]	ZX plane		ZY plane		XY plane	
	Max Value [dB]	Average [dB]	Max Value [dB]	Average [dB]	Max Value [dB]	Average [dB]
855	1.06	-3.01	0.82	-1.29	0.85	-0.74
870	0.34	-3.65	0.30	-1.86	0.24	-1.31
885	-0.72	-4.59	-0.60	-2.69	-0.66	-2.27

## ■ APPROVAL

RS PRO	
DRAWN BY:	AR, June 13, 2018
APPROVED BY:	CP, June 13, 2018
REVISION:	A, Initial Release