

|                          |                             |                        |                 |
|--------------------------|-----------------------------|------------------------|-----------------|
| DIMENSIONS ARE IN INCHES |                             | UNLESS OTHERWISE NOTED | TOLERANCES ARE: |
| ONE PLACE DECIMALS ±.1   | THREE PLACE DECIMALS ± .005 | ANGLES ± 2°            |                 |
| TWO PLACE DECIMALS ±.01  | FOUR PLACE DECIMALS ± .0020 |                        |                 |

TITLE: **LOW COST BOARD SPACERS**

DWG NO: XW-XX-XX-X-X-XXXX-XXX-XX-XXX  
SHEET 2 OF 2

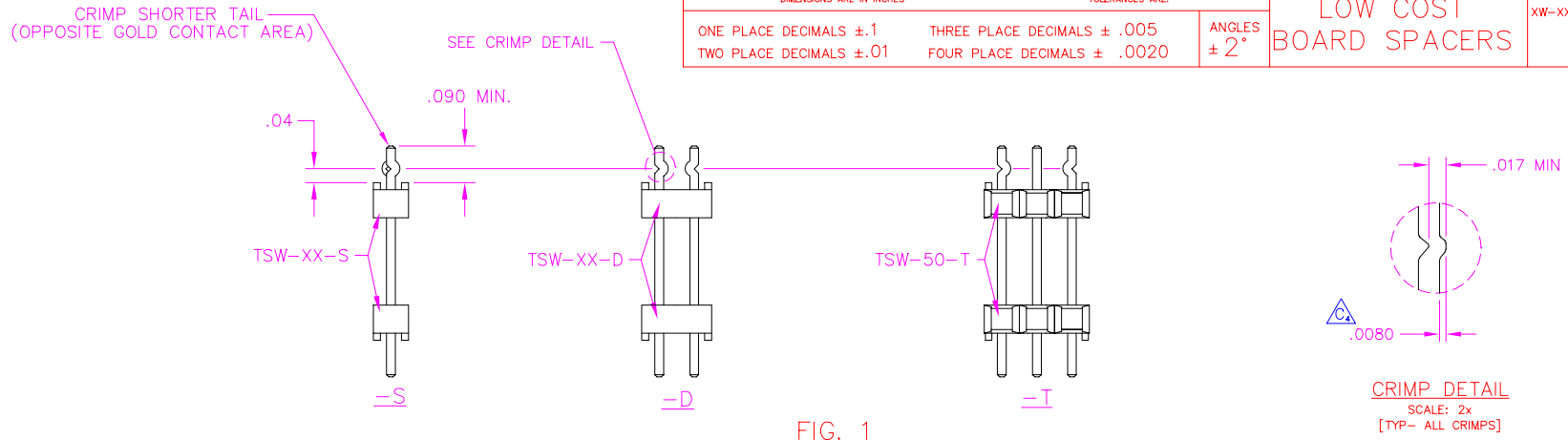
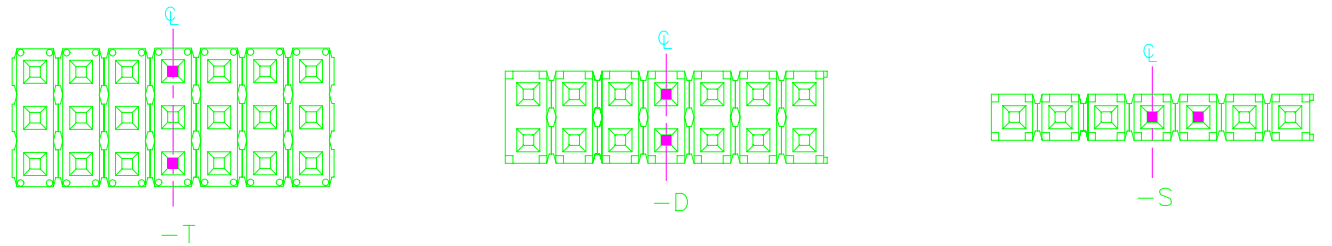
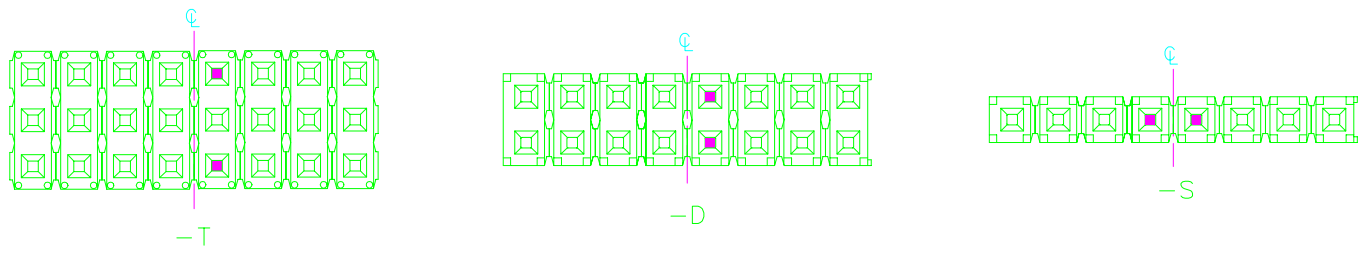


FIG. 1  
LOCKING LEAD OPTION



■ = CRIMP LOCATION  
ODD POSITIONS



■ = CRIMP LOCATION  
EVEN POSITIONS

DO NOT  
SCALE FROM  
THIS PRINT

**PROPRIETARY NOTE**  
THIS DOCUMENT CONTAINS INFORMATION CONFIDENTIAL AND PROPRIETARY TO SAMTEC INC. AND SHALL NOT BE REPRODUCED OR TRANSFERRED TO OTHERS OR USED FOR ANY PURPOSE OTHER THAN THAT FOR WHICH IT WAS OBTAINED WITHOUT THE EXPRESSED WRITTEN CONSENT OF SAMTEC INC.

PLOT SCALE: .225/ DIM SCALE: .225

**samtec**

MISC\MKTG  
XW-2MK

810 PROGRESS BLVD., NEW ALBANY, INDIANA 47150  
PHONE (812) 944-6733 P.O. BOX 1147  
CODE 55322

MADE BY: WILLIAMS 8-13-84

XW-XX-XX-X-X-XXXX-XXX-XX-XXX  
SHEET 2 OF 2