

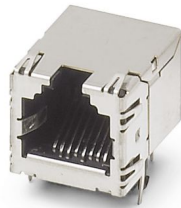
# VS-08-BU-RJ45-6/LH-1 - RJ45 PCB connector



1653087

<https://www.phoenixcontact.com/gb/products/1653087>

Please be informed that the data shown in this PDF document is generated from our online catalog. Please find the complete data in the user documentation. Our general terms of use for downloads are valid.



RJ45 PCB connector, design: RJ45, degree of protection: IP20, number of positions: 8, 1 Gbps, CAT5 (IEC 11801:2002), material: Metal, connection method: THT wave, cable outlet: straight

## Your advantages

- Through-hole technology (THT) provides high mechanical stability when connecting the female connector to the PCB
- The extended temperature range from -25°C to +80°C enables use in demanding applications
- Safe transmission due to shielding

## Commercial data

Item number	1653087
Packing unit	5 pc
Minimum order quantity	5 pc
Sales key	ABNADC
Product key	ABNADC
Catalog page	Page 85 (C-2-2013)
GTIN	4017918970031
Weight per piece (including packing)	7.02 g
Weight per piece (excluding packing)	5.13 g
Customs tariff number	85366930
Country of origin	JP

1653087

<https://www.phoenixcontact.com/gb/products/1653087>

## Technical data

### Product properties

Product type	Data connector (device side)
Type	RJ45
Number of positions	8
Connection profile	RJ45
Type of packaging	PE bag
Housing shield springs	Yes
Number of slots	1
Type	Socket
Shielded	yes
Cable outlet	straight

### Insulation characteristics

Overvoltage category	I
Degree of pollution	2

### Electrical properties

Rated voltage (III/2)	72 V DC
Rated voltage (III/3)	72 V (DC)
Rated surge voltage	1.5 kV DC
Rated surge voltage (III/3)	1.5 kV
Rated surge voltage	1 kV DC
Rated current	1 A
Insulation resistance	> 500 MΩ
Test voltage	1 kV DC
Test voltage Core/Core	1 kV DC
Test voltage Core/Shield	1.50 kV DC
Contact resistance per contact pair	max. 230 mΩ
Transmission medium	Copper
Transmission speed	1 Gbps

### Connection data

#### Connection technology

Connection method	THT wave
-------------------	----------

### Dimensions

Width	17.6 mm
Height	18.1 mm
Length	21 mm
Installed height	13.80 mm
Orientation to PCB	90.00 °

# VS-08-BU-RJ45-6/LH-1 - RJ45 PCB connector



1653087

<https://www.phoenixcontact.com/gb/products/1653087>

Data pin length	3.60 mm
-----------------	---------

## Material specifications

Material Metal surface contact area (top layer)	Au (1.27 µm/50 µ")
Material Metal surface contact area (middle layer)	Ni
Material Metal surface soldering area (top layer)	Au
Material Metal surface soldering area (middle layer)	Ni
Material	Copper alloy (Housing (shielding))
Flammability rating according to UL 94	V0
Housing material	Metal
Contact material	Phosphor bronze
Contact surface material	Gold
Contact carrier material	PBT

## Cable/line

Test voltage Core/Core	1 kV DC
Test voltage Core/Shield	1.50 kV DC
Halogen-free	no

## Mechanical properties

### Mechanical data

Insertion/withdrawal cycles	> 750
Insertion force per signal contact	< 20.00 N
Extraction force per signal contact	< 20 N

## Environmental and real-life conditions

### Ambient conditions

Degree of protection	IP20
Ambient temperature (operation)	-25 °C ... 80 °C
Ambient temperature (storage/transport)	-25 °C ... 80 °C

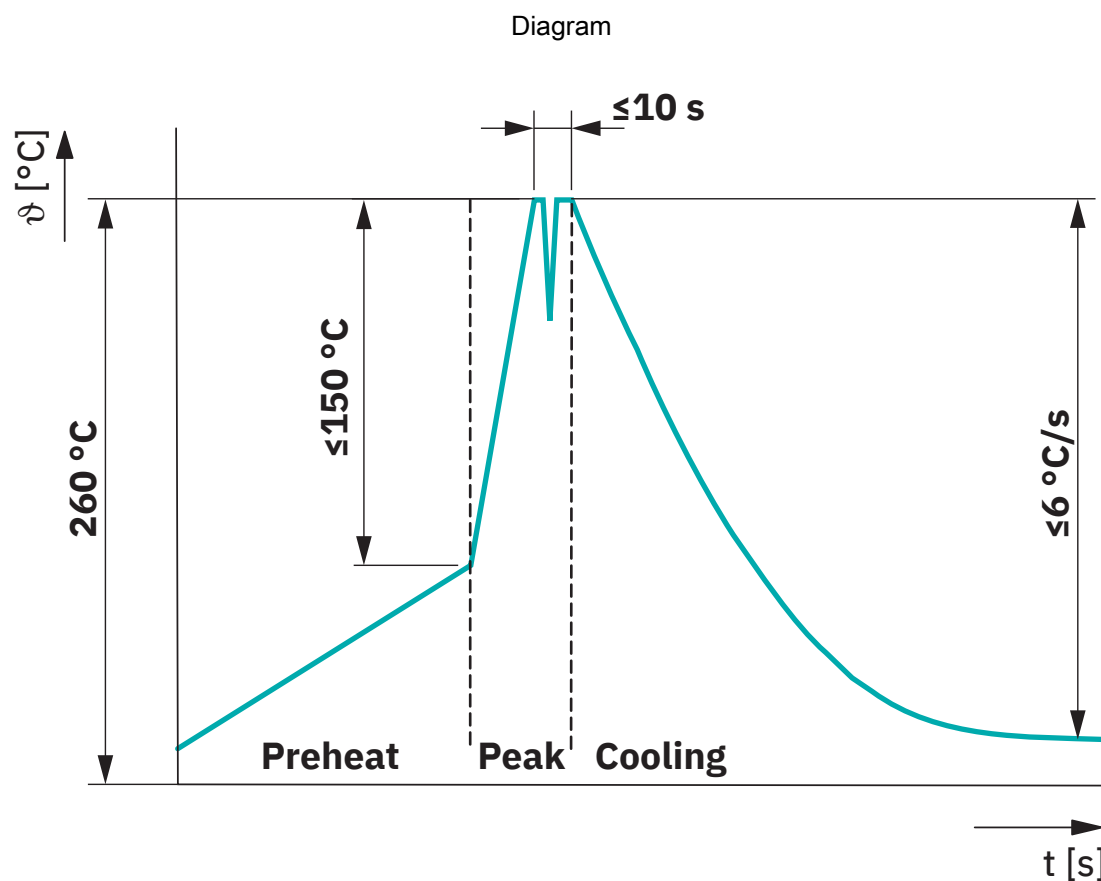
## Mounting

Mounting type	PCB mounting
---------------	--------------

### Processing notes

Classification temperature T <sub>c</sub>	260 °C
---	--------

## Drawings



Classification wave soldering profile

# VS-08-BU-RJ45-6/LH-1 - RJ45 PCB connector



1653087

<https://www.phoenixcontact.com/gb/products/1653087>

## Classifications

### ECLASS

ECLASS-13.0	27460201
-------------	----------

### ETIM

ETIM 9.0	EC002637
----------	----------

### UNSPSC

UNSPSC 21.0	39121400
-------------	----------

# VS-08-BU-RJ45-6/LH-1 - RJ45 PCB connector



1653087

<https://www.phoenixcontact.com/gb/products/1653087>

## Environmental product compliance

### EU RoHS

Fulfills EU RoHS substance requirements	Yes, No exemptions
---	--------------------

### China RoHS

Environment friendly use period (EFUP)	EFUP-E
	No hazardous substances above the limits

### EU REACH SVHC

REACH candidate substance (CAS No.)	No substance above 0.1 wt%
-------------------------------------	----------------------------

Phoenix Contact 2025 © - all rights reserved

<https://www.phoenixcontact.com>

PHOENIX CONTACT Ltd  
Halesfield 13, Telford  
Shropshire, TF7 4PG  
01952 681700  
[info@phoenixcontact.co.uk](mailto:info@phoenixcontact.co.uk)